

# Ocean Breeze Reserve

# MASTER PLAN



July 2017  
Issue D

# DRAFT

**ballina**  
shire council

Jackie Amos Landscape Architect

# TABLE OF CONTENTS

The Project\_\_\_\_\_1

Project Objectives\_\_\_\_\_1

Location\_\_\_\_\_1

Site Context\_\_\_\_\_2

Site Investigations\_\_\_\_\_3

    Site Elements\_\_\_\_\_3

    Site Topography\_\_\_\_\_4

    Site Services\_\_\_\_\_5

    Site Vegetation\_\_\_\_\_6

    Hutley Drive Extension\_\_\_\_\_8

Site Photographs\_\_\_\_\_9

Site Opportunities\_\_\_\_\_13

Site Issues\_\_\_\_\_14

Community Consultation Phase 1\_\_\_\_\_15

    Response to Previous Proposals\_\_\_\_\_15

    Stakeholder Consultation\_\_\_\_\_16

    Community Survey\_\_\_\_\_18

    Community Survey Summary\_\_\_\_\_19

    Community Survey Results\_\_\_\_\_20

Master Plan Priorities\_\_\_\_\_29

Concept One\_\_\_\_\_30

Concept One Cross Sections\_\_\_\_\_31

Concept One Rationale\_\_\_\_\_32

Concept One Proposals\_\_\_\_\_33

Concept One Anticipated Costs\_\_\_\_\_34

Concept One Proposed Staging\_\_\_\_\_35

Concept Two\_\_\_\_\_36

Concept Two Cross Sections\_\_\_\_\_37

Concept Two Rationale\_\_\_\_\_38

Concept Two Proposals\_\_\_\_\_39

Concept Two Anticipated Costs\_\_\_\_\_40

Concept Two Proposed Staging\_\_\_\_\_41

Concept Three\_\_\_\_\_42

Concept Three Cross Sections\_\_\_\_\_43

Concept Three Rationale\_\_\_\_\_44

Concept Three Proposals\_\_\_\_\_45

Concept Three Anticipated Costs\_\_\_\_\_46

Concept Three Proposed Staging\_\_\_\_\_47

Appendix A  
Community Consultation Phase 1 Flyer and Survey



# THE PROJECT

Ocean Breeze Reserve is a 1.24 hectare reserve located between Hutley Drive and Ocean Breeze Drive at Lennox Head. At the end of 2016, Ballina Shire Council commissioned the preparation of a Master Plan for the reserve. The Ocean Breeze Reserve Master Plan will be incorporated into Ballina Shire Council's Plan of Management for Community Land.

The need for the Master Plan was identified after proposals to incorporate a bike track and community garden in the reserve received a variety of submissions from the community. The Ocean Breeze Reserve Master Plan is intended to recommence the design process for the reserve with a fresh 'slate'. The Master Planning considers previous community consultation as well as the outcomes of master plan specific engagement to ensure the preparation of the master plan for the reserve is responsive to the community's visions for the site.

## PROJECT OBJECTIVES

The primary objective of the Ocean Breeze Reserve Master Plan project is to prepare a Master Plan that guides the future development and use of the Ocean Breeze Reserve.

Specific project objectives are:

- to identify the reserve's values and assess their significance;
- to engage with stakeholders in relation to the attributes of the reserve, and the existing and potential future use of the reserve;
- to identify options, challenges and opportunities for the potential future use of the reserve that protect the reserve's values and utilise the opportunities presented by the reserve; and
- to illustrate the preferred future use of the reserve in a Master Plan supported by a rationale report and initial costings for the implementation of the Master Plan.

## LOCATION

Ocean Breeze Reserve is located between Ocean Breeze Drive and Hutley Drive. The site is west of the Byron Bay Road and The Coast Road roundabout. Ocean Breeze Reserve sits within a residential precinct along Ocean Breeze Reserve and Bombora Place. The park can be reached from a pedestrian access on Ocean Breeze Reserve and via vehicle from the eastern extent of Hutley Drive. The reserve is Council managed land and is zoned RE1 Public Recreation under the Ballina Local Environmental Plan (LEP 2012).



Figure 1: Ocean Breeze Reserve





SITE CONTEXT





SITE INVESTIGATIONS





# SITE INVESTIGATIONS









SITE INVESTIGATIONS



- TREES DESCRIPTION
- existing tree (trunk)
  - trees identified by BSC as having the potential to be removed due to proximity to sewer or stormwater
  - trees identified by BSC as having the potential to be removed due to being weed species and concerns for spread of seeds
  - trees identified by BSC as having the potential to be removed due to proximity to boundary and potential with root issues
  - paperbarks identified by BSC for possible removal



# SITE INVESTIGATIONS

TREE NUMBER	SPECIES
1	Syzygium luehmanii
2	Syzygium australe
3A, 3B, 3C	Cupaniopsis anacardioides
4	Syzygium luehmanii
5A, 5B, 5C	Cupaniopsis anacardioides
6A, 6B, 6C	Cupaniopsis anacardioides
7	Melaleuca leucadendron
8	Norfolk Island Pine
9	Syzygium australe
10	Syzygium australe
11A, 11B	Syzygium australe
12	Syzygium australe
13A, 13B	Cupaniopsis anacardioides
14A, 14B, 14C	Syzygium australe
15	big bright green leaf
16A	Acmena species
16B	Acmena species
17	unidentified
18	Ficus obliqua
19	Candlenut
20A, 20B	Blackbean
21	Ficus obliqua
22	Ficus obliqua
23	Ficus obliqua
24	Ficus obliqua
25	unidentified palm
26	unidentified palm
27	bleeding heart
28	Livistonia palm
29	unidentified

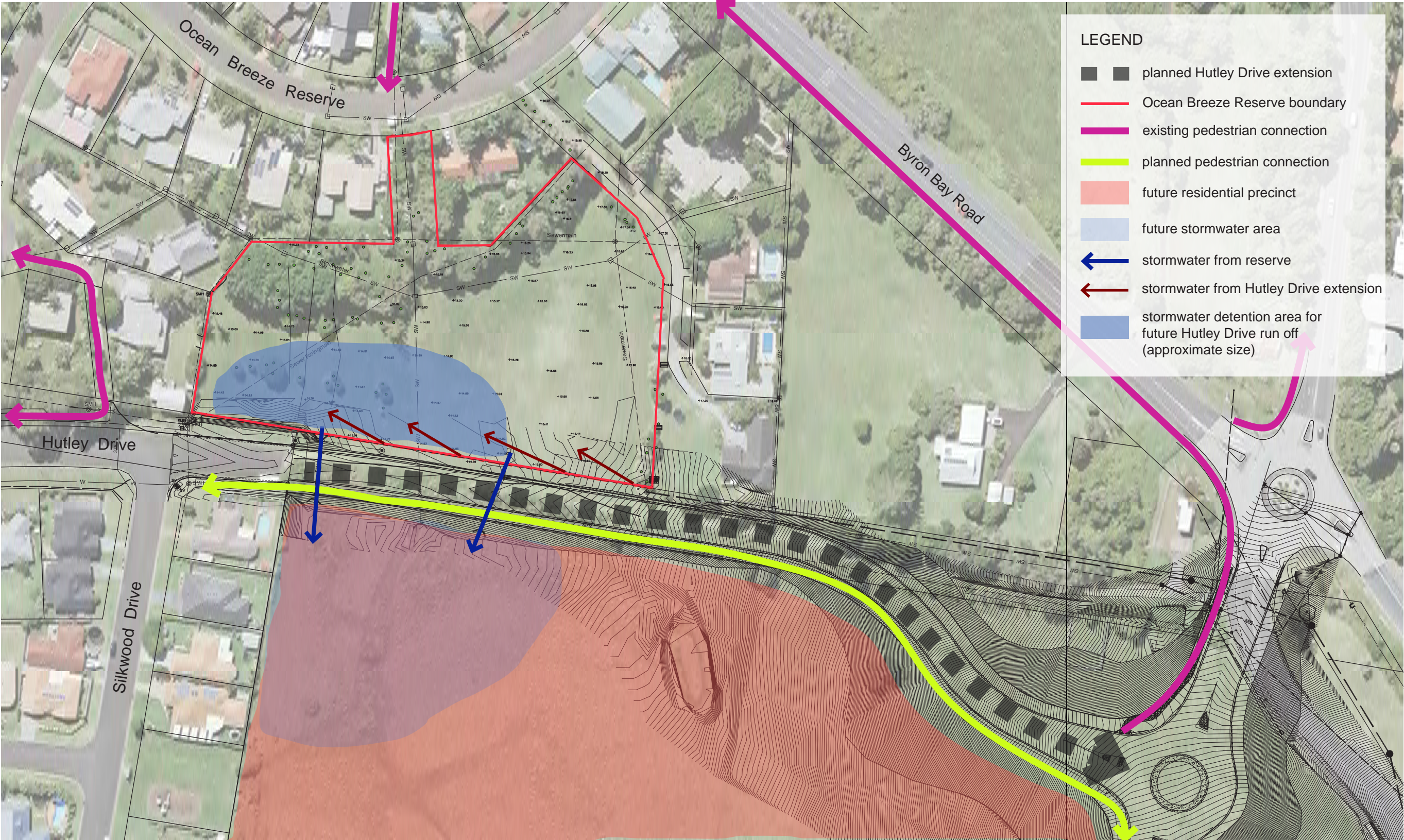
TREE NUMBER	SPECIES
30	big green leaf
31	Eucalyptus species
32	Bunya pine
33	Eucalyptus species
34	Norfolk Island Pine
35	Norfolk Island Pine
36	Bunya Pine
37	Cadaghi
38A, 38B	Date Palm
39	Casuarina
40	unidentified but attractive tree
41	Grevillea robusta
42A, 42B, 42C	Ficus obliqua
43	unidentified but attractive tree
44	Bunya pine
45	unidentified
46	umbrella tree
47	casuarina species
48	Cupaniopsis anacardioides
49	unidentified but attractive tree
50	unidentified but attractive tree
51	Cupaniopsis anacardioides
52	Cupaniopsis anacardioides
53	Eucalypt species
54A, 54B, 54C, 54D	Syzygium species
55	Macadamia species
56	Melaleuca leucadendron
58	Melaleuca leucadendron
59	Melaleuca leucadendron
60	Cupaniopsis anacardioides
61	Melaleuca leucadendron
62	unidentified

Ballina Shire Council identified the following requirements relative to vegetation in Ocean Breeze Reserve.

- All environmental and noxious weed species trees, shrubs and groundcovers should be removed.
- A 4m wide emergency and maintenance access is needed from Ocean Breeze Drive to the reserve. Trees, shrubs and groundcovers in this zone require removal.
- Removal of the line of Ficus Obliqua required as too close to residential properties with large risk to underground services and infrastructure within 20m from the canopy drip line.
- There are no noticeable species of high conservation value containing threatened species or endangered ecological communities. There are however individual native species planted and naturally growing on site. Natural regeneration of littoral rainforest seedlings is occurring under the northern tree line.
- Prefer 4m mature canopy drip line buffer from residential property boundaries to manage foreseeable tree hazards and root encroachments.
- Endemic native species can be otherwise retained.
- If any figs are not being removed they should be at least skirted to improve reserve security and maintenance.



SITE INVESTIGATIONS





SITE PHOTOGRAPHS



Photo A - looking across open grass area from group of young Paperbark trees



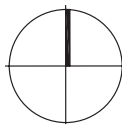
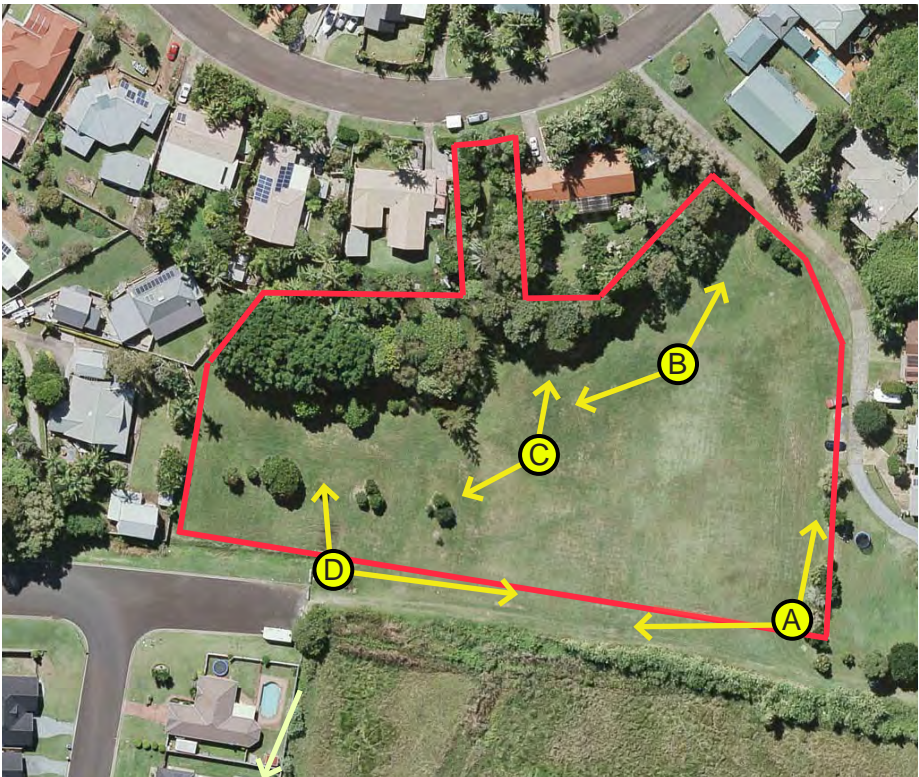
Photo B - vegetation along the northern boundary, east of the Ocean Breeze Drive access



Photo C - vegetation along the northern boundary, west of the Ocean Breeze Drive access



Photo D - looking across open grass area from drain inlet, south side of reserve





SITE PHOTOGRAPHS



Photo E - looking south to existing residential properties and vacant land, south of reserve



Photo F - looking west along Hutley Drive and across reserve to vegetation along the northern boundary



Photo G - looking south across the grassed open space with Tuckeroos groups at right of photo



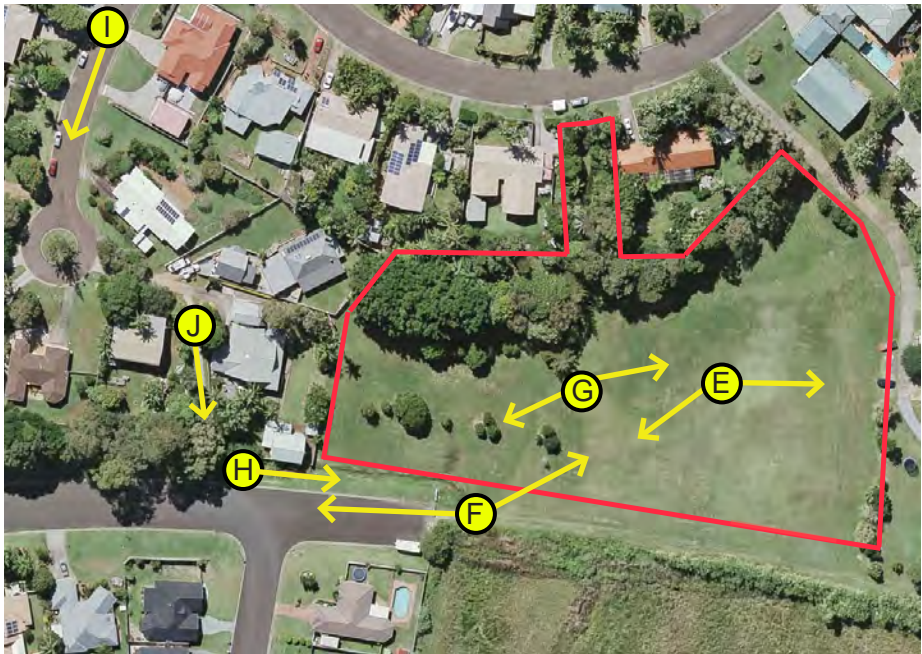
Photo H - Hutley Drive and drain



Photo I - Bombora Place



Photo J - Bombora Place path





SITE PHOTOGRAPHS



Photos K - planted vegetation along the access to reserve from Ocean Breeze Drive

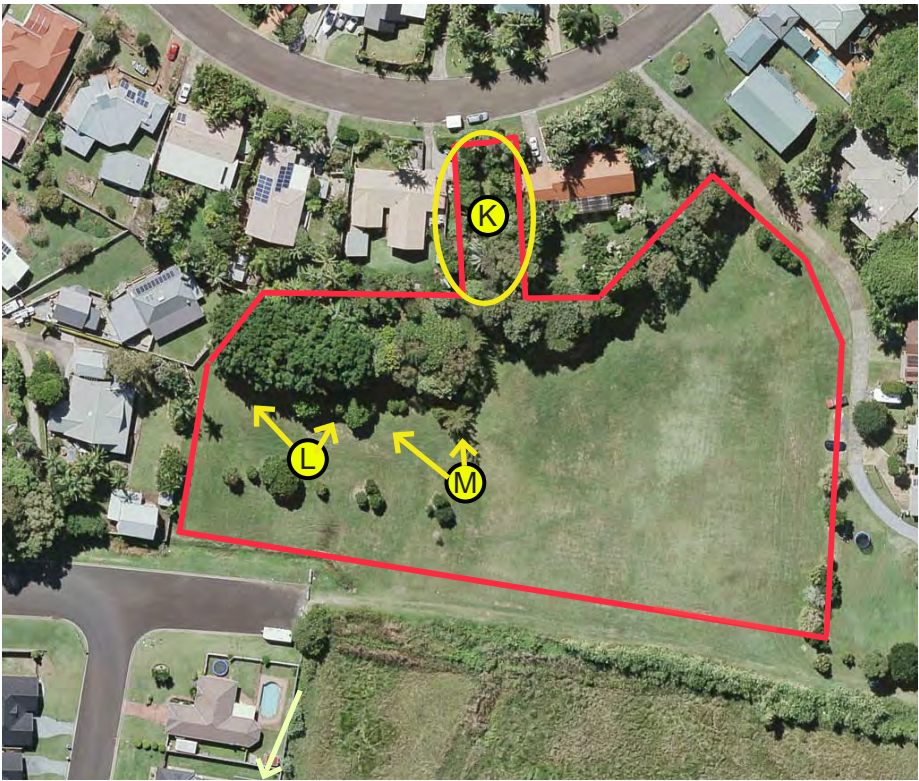


Photo L - Fig tree and other vegetation in northwest corner of reserve



Photo M - Norfolk Island Pine and vegetation along northern boundary



SITE PHOTOGRAPHS



Photo N - Ocean Breeze Drive looking to reserve entry



Photo O - private driveway east of the reserve

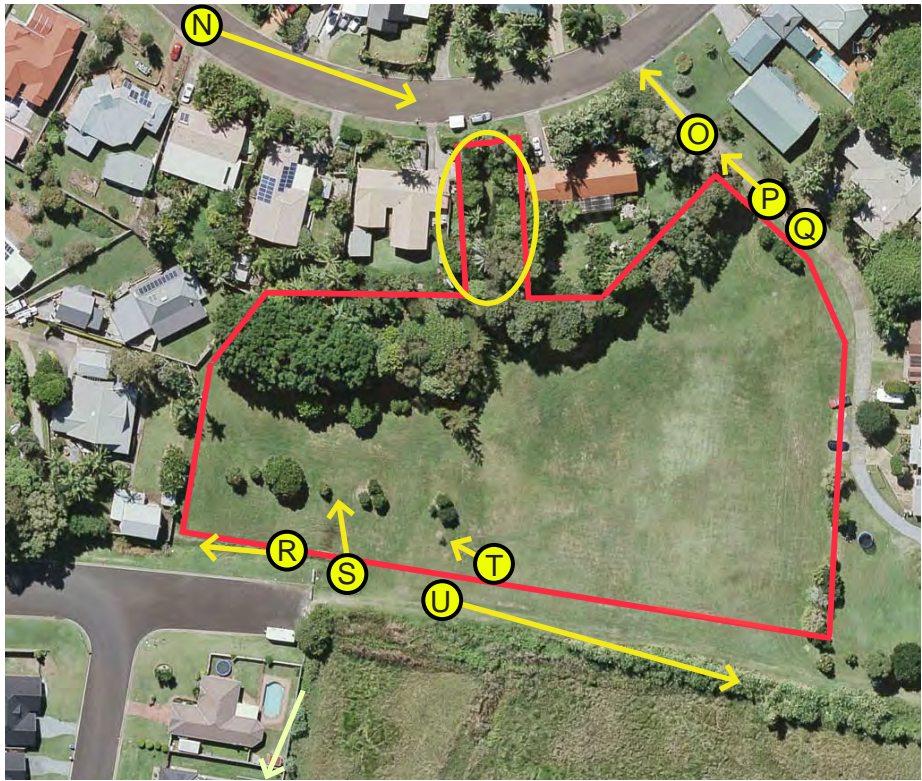


Photo P - private driveway and homes east of the reserve



Photo Q - group of Lilly Pillys at eastern edge of reserve



Photo R - Hutley Drive open drain



Photo S - open drain and low point in reserve



Photo T - Tuckeroos and Paperbark in open space



Photo U - view from reserve to water tower



# SITE OPPORTUNITIES





SITE ISSUES





# COMMUNITY CONSULTATION PHASE 1

Community input into future planning of the Ocean Breeze Reserve is vital to achieving outcomes for the park that represent the aspirations and needs of the Lennox Head community. In July 2016 Council commissioned the preparation of a master plan for the reserve and one that would involve consultation with the community. This master planning process was also to consider previous proposals put forward for the reserve of a BMX track and community garden.

The first phase of community consultation was conducted before the preparation of concept options for the reserve. Community consultation phase 1 included consultation with stakeholder groups and with the broader community.

The stakeholder consultation was conducted at a number of face to face meetings. Persons and groups who had provided previous submissions regarding proposals for the Ocean Breeze Reserve were invited to attend individual meetings.

Consultation with the broader community was conducted through an online survey. Council raised awareness of the survey through letter box drops to residences in the proximity of the reserve and via printed and electronic media outlets. The survey was available for completion on line at Council's web site for a period of one month. The survey received 150 responses.

The following provides a summary of the consultation outcomes for the reserve. This summary also includes a summary of the responses received to the community garden and BMX proposals, the outcomes of the stakeholder consultation with community groups and the outcomes of the community survey.

## Response to Previous Proposals

In 2015/2016 proposals were put forward by Council for the Ocean Breeze Reserve. These proposals were for a children's BMX bike track and community garden at the site. Council received approximately 43 written responses to these proposals. The responses were both in opposition to and in support of the proposals. Most focused on the proposed BMX track, however, there were also some comments made relative to the community garden proposal. The following identifies the key points made against and for the proposals.

### Issues Raised

- concern about process of proposal and lack of community consultation
- concern about lack of detail or information about proposal
- extent of fill required to make BMX track
- potential for fill to be contaminated
- impacts on reserve drainage and stormwater runoff to adjacent wetland
- proximity of BMX track to existing residences
- potential for anti-social behaviour and increase in noise
- lack of supporting facilities such as toilets, taps, bins and parking
- safety and surveillance of children trying to access and use the reserve
- costs associated with implementation and ongoing maintenance
- potential for increased traffic in the area
- suitability of site that is often wet
- concern about lack of remnant open space
- question the need and demand for proposals
- potential for introduction of exotic species, pesticides and herbicides

### Support for Proposals

- BMX track a good facility for younger children
- BMX track could be a place to learn to cycle and scoot
- promote healthy outdoor lifestyle for kids
- a place for families and kids
- would enhance tourism to the area
- good as a low cost recreation facility for young children
- enhance sense of community
- could also incorporate elements for skateboarders
- park is currently under utilised
- provide diversity in terms of recreational activities
- well situated to provide for residents with children west of the Coast Road



# Stakeholder Consultation

45 stakeholders were invited to attend a face to face meeting with Council to discuss opportunities for the Ocean Breeze Reserve. Stakeholder meetings were conducted with 6 representatives from local organisations and residents on the 13 December 2016. Meetings were conducted at the Lennox Head Community Centre and Council was represented by Skye McNamara, Sustainability Planner with Ballina Shire Council and Jackie Amos, the consultant engaged by Ballina Shire Council to prepare the Ocean Breeze Reserve master plan. The following notes are a summary of discussions had at those meetings.

## Meeting 1

Residents of Ocean Breeze Drive with a property adjacent to the reserve:

- the reserve should be retained for passive relaxation;
- the retention of some open space for the neighbourhood is vital;
- the original proposal provided for the community garden is a bit ‘greedy’ as it used up too much of the space;
- the reserve needs to have a balance and the majority of the space should not be dedicated to use as a community garden;
- the current uses are for informal cricket games, kicking a football and other things like that;
- there is potentially a need for a netball court, but you would need to consult with those in the know about recreational needs for the area;
- the southwest corner is the wettest part of the reserve;
- the sewer and stormwater run through the access to the reserve off Ocean Breeze Drive;
- in designing for the reserve, consideration will need to be given to what open space is going to be included in the development to the south at Reservoir Hill;
- concerned about the location of sheds potentially associated with the community garden;
- in thinking about shelters and picnic facilities, consideration would have to be given to how far you go with the provision of services. For example, do you then have to include toilets, bollards etc?
- think that the planning proposal for Reservoir Hill includes wetland/stormwater area with some retention ponds and that there is protection over this area;
- residents have planted numerous trees on the reserve both behind their property and at other locations in the reserve. Species include Brazilian Snakewood, Candlenut Tree and Lilly Pilly.
- the southerly winds are strong and the trees help protect from this and also give privacy to homes. They wouldn’t like to see too much of this planting opened up;
- the reserve is also used for horses and dogs off leash;
- the reserve is a busy thoroughfare;
- they have talked to Council’s maintenance crew about maintenance of reserve. They have actively participated in planting, mulching and maintaining planting in the reserve.

## Meeting 2

Resident of Bombora Place with a property adjacent to the reserve:

- the previous proposal for a BMX track and community garden placed the BMX track at the wettest location in the park;
- not against the BMX track;
- some time ago residents lobbied for swings in the park, but they were placed elsewhere when the Meadows was developed;
- the highest area in the reserve is best for use;
- the development of Hutley Drive will make a circuit for young people in cars;
- the previous proposal for the community garden showed a fence around the garden. This will make it just for community garden participants. The park should be for all people.
- thinks it would be better to develop the BMX track behind the Lennox Head Community Centre;
- would like to see the north and eastern extents of the reserve planted out with a central open grassed area;
- would help Council maintain the reserve;
- consider exercise stations, a safe walkway along Hutley Drive, a netball court, basketball court and other things for kids;
- giving the reserve to the community garden association is limited use of the reserve;
- we need something for families;
- the reserve needs to be made into something beautiful.

## Meeting 3

Member of the Ballina Shire Skateboard Club:

- their club is trying to put professionalism into skating;
- they are also trying to get their members involved in the design of skate facilities;
- they are trying to get infrastructure into the design of open space. Existing facilities include the Missingham Spit skate park and the skate park at Lennox Head.
- they are not looking for another skate park, but are looking for skate infrastructure;
- would like to suggest “skateable structures” or a “pump track”;
- a “pump track” is a manufactured skate track made and installed in modules. The joints are filled between the modules so there are no bumps. A track can also be made for a fairly low cost on site.
- it could also be used as a cycle path;
- the best option is to have either astro or real turf immediately next to the track;
- examples of manufacturers are Trinity Skate parks (Sunshine Coast) and Precision Skate parks;
- you could incorporate skateable elements on a side path making it multi use;
- if you mirror the pattern of the “pump track” this would allow for racing.



Meeting 4

Members of Lennox Head Community Garden Group:

- the group has officially been going 18 months;
- they submitted an application to Council to establish a community garden at Ocean Breeze Reserve. The reserve ticks a lot of the boxes in terms of its suitability for a community garden. It is relatively flat, gets plenty of light and is large.
- the concept prepared for the community garden showed the use of one acre of land at the eastern side of the reserve. The extent of one acre was modelled on the Ballina Community Garden.
- their group currently has 20 people;
- The Ballina Community Garden established in 2011 has a membership of between 60 to 80 people.
- the garden is to be entirely edible, based on a permaculture approach to gardening. The garden would include companion planting and fruit trees.
- there is a patch of red soil in the northeast corner that would be suitable for the planting of fruit trees;
- the balance of the community garden would be raised gardens with the harvest to be shared to paid members. Potentially the leftover harvest may be shared with groups such as Meals on Wheels etc.
- the content of the garden would include raised gardens separated by paths, a fruit tree forest of about 12 trees, storage for hand held tools and wheelbarrows (lock up), compost bays, worm farm and a common space with a pergola and seating;
- the garden could be access by the broader community;
- the garden could be entirely public space and would not have to be fenced;
- it would be possible to consider distributing the community garden throughout the park, however, it would be critical to think about how the garden could be watered.
- the western part of the reserve is too wet for the community garden;
- like the idea of the raised gardens using concrete blocks as they have longevity;
- the size of the community garden is not the issue. They are just keen to have a community garden.
- a good model would be an expandable model with potential future zones;
- starting small is a good idea as it would be manageable;
- the community garden could cater for all ages;
- don't understand the need for broad open space;
- power is not essential to the garden as they would use solar power. Water is essential.

Meeting 5

Member of Lennox Head Residents Association:

- has been interested in Ocean Breeze Reserve since 2014. At that time they did a survey and received 1000 responses. They sent a summary of that survey and responses to the Mayor and Counsellors at Ballina Shire Council.
- after the survey they felt they had neglected young people so they went to local schools and got them to nominate school representatives who could participate in 4/5 workshops. This included junior children. From that they came up with a short list of priorities and identified number one as the need for a BMX track.
- the children put together a presentation for the residents association. Parents at that stage were involved. The children identified three locations. Ocean Breeze Reserve was not one of them. The children took it to Council and Council agreed that as a facility it was important. Council staff investigated and found that none of the three locations were suitable. Ocean Breeze Reserve was found to be the preferred location but the neighbours didn't support a BMX track at the reserve.
- is also involved with the community garden but thinks the current design is large and out of scale.

Meeting 6

Resident of Bombora Place with a property adjacent to the reserve:

- lives adjacent to the southwest corner of the reserve;
- overland flow goes down the pathway link from Bombara Place to Hutley Drive;
- if fill goes in the southwest corner of the reserve it will affect the flow of stormwater in their lot;
- previously there were three lakes in the reserve when the area was first developed, but the lakes were not maintained and were eventually filled.
- open space is valuable as a break between areas of urban development.
- the previous proposals for a BMX track and community garden area very specific. The reserve should be for everybody not just interest groups.
- the reserve is currently used for cricket, ball play and games of tag;
- pedestrian safety is a priority along Hutley Drive;
- drainage within the reserve is an issue and must be considered;
- the reserve should be for the use of everybody.



# Community Survey

Broader consultation with the Lennox Head community occurred via an on line survey at Council's web site. Awareness of the survey was raised by a number of approaches undertaken by Council.

On the 16th February 2017, an email or letter was sent, with a link to the online survey, to all residents and organisations on the Ocean Breeze Reserve Master Plan contact list. A letter box drop with a flyer was conducted to surrounding residents in Ocean Breeze Drive, Somerset Place, Bombora Place, Silkwood Road, Danalah Close, Kell Mather Drive, Hutley Drive (east end from Claremont Place) and Claremont Place. The flyer included a link to the online survey. An email with an electronic flyer and survey link was also forwarded to the Lennox Head Residents' Association, the Lennox Head Chamber of Commerce and the Lennox Head Combined Sports Association on the 22nd February 2017. A media release was provided to the Lennox Wave on the 22nd February 2017 regarding the Ocean Breeze Reserve Master Plan and Community Survey. An advertisement regarding the survey was included in the Ballina Advocate on the 22nd February 2017. The survey closed on the 20th March and Council received 150 responses.

Refer to Appendix A for the Ocean Breeze Master Plan flyer and the community survey.



# Community Survey Summary

These are the key outcomes of the survey based on the 9 questions and the responses received.

- There was interest in the reserve from both nearby residents and the broader Lennox Head community.
- Most respondents do not currently use the reserve or use it only occasionally. Just over 20% of respondents use the reserve at least once a week.
- One of the main reasons the reserve is not used is lack of facilities and lack of appeal.
- The most frequently mentioned current uses of the reserve were as an access way, for walking, for dog walking, to play with children and for informal games such as kicking a football and back yard cricket.
- The people currently using the reserve appreciate that it is a remnant area of open, green space in an otherwise developed area. They also appreciate it is quiet, has trees providing shade, it is in a good location and provides a good, safe play space for children.
- For those people dissatisfied with the reserve in its current form, the most commonly noted reasons were that the reserve is under utilised, that it lacks facilities and interest and that it gets wet and boggy after rain. Other issues identified, but less commonly, were a lack of trees and landscaping and a lack of maintenance including mowing and weed control.
- The most desired facilities for the reserve are ‘passive open space’ and ‘walking paths’.
- The next most desired facilities were ‘community food garden’, ‘play equipment’, ‘facilities for younger children’ and ‘cycling paths’.
- Also identified as more desirable than not, were ‘BBQ and picnic facilities’, ‘exercise stations’ and ‘facilities for older community members’.
- ‘Bike parking’ and ‘facilities for older children’ were found to be more desired than not, but not particularly strongly so.
- Whilst a ‘dog exercise area’ was found to be desirable, there was also a high proportion of the respondents who felt this facility was almost as undesirable.
- ‘Ornamental Garden’ did not receive a strong response in any one area.
- The facilities identified as most undesirable included ‘vehicle parking’, ‘BMX track’, ‘skate boarding infrastructure’ and ‘sports equipment/fields/courts’.

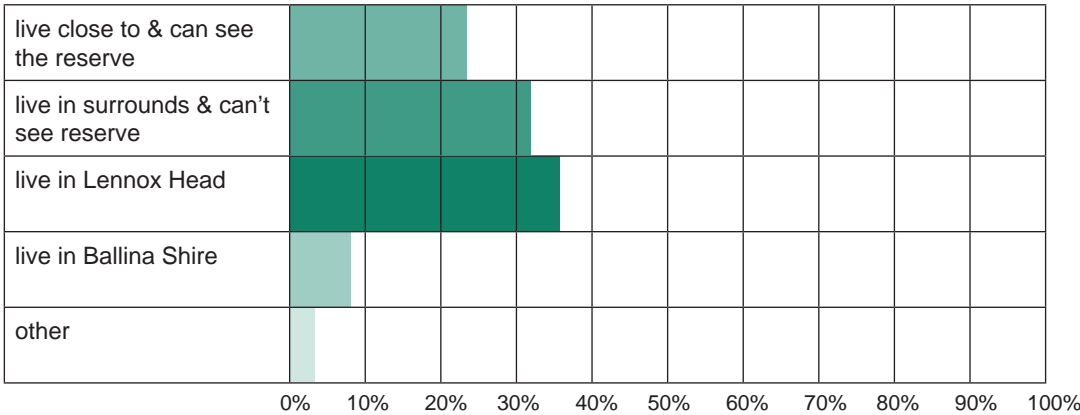
- Respondents also indicated that other facilities such as toilets, garbage bins, access to water, the provision of shade and the use of native vegetation were important.
- Just over 60% of respondents felt that potential changes to the reserve relating to the provision of additional facilities would have a positive impact, providing them with additional recreational opportunities.
- Approximately 1/4 of respondents identified potential negative impacts including the potential for more traffic, increase noise and parking issues around their homes.
- Respondents were given the opportunity to identify other potential changes. A positive change of benefiting and uniting the community was mentioned 11 times.
- When respondents were given the opportunity to add other comments regarding the reserve many related concerns or support relating to the previous proposals for the community garden and BMX track.
- New ideas presented at this stage included interpretive signage about flora and fauna, natural bushland areas, a sculpture park and a community tennis court. Respondents also raised important considerations at this question including the need for any improvements to be environmentally friendly and of low environmental impact and that safety and traffic management is vital.



# Community Survey Results

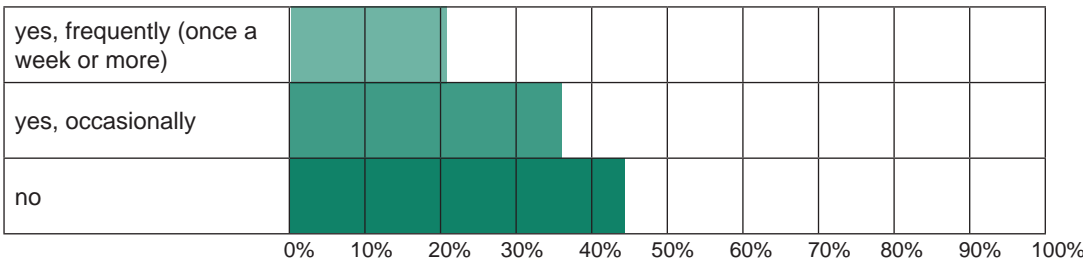
## Question 1 What is your proximity to Ocean Breeze Reserve?

Out of 150 participants, 145 responded to this question and 5 skipped the question. 35.86% of respondents indicated they live in Lennox Head. 31.03% indicated they live in the surrounding area but can't see the reserve. 22.76% indicated they live close to the reserve and can see the reserve. 7.59% indicated they living in Ballina Shire and the balance indicated they lived outside the Ballina Shire or were planning to move to the shire.



## Question 2 Do you currently use Ocean Breeze Reserve?

Out of 150 participants, 150 responded to the question. Of the respondents, 20.67% indicated they use the park frequently, visiting once a week or more. 36% indicated they use the reserve occasionally and the balance of respondents, being 43.33%, indicated they currently do not use the park.



For those 65 people who indicated they don't use the reserve, the reasons, and number of people giving those reasons, are:

29 people	There are no facilities or features at the reserve I would want to use.
10 people	I don't live near the reserve.
8 people	Other open spaces are closer.
6 people	I didn't know it was public reserve.
5 people	The reserve is unattractive.
2 people	The reserve feels like it is other peoples back yard.
1 person	The ground is often too wet to use the reserve.

## Question 3 How do you currently use Ocean Breeze Reserve?

Out of 150 participants, 108 respondents answered this question. 42 skipped this question. This most likely relates to the 65 people who indicated in the previous question that they did not use the reserve. 18 people who don't use the reserve chose to answer this question and indicated again that they don't use the reserve. Some people indicated more than one use of the reserve. The frequency of each reason is indicated as a % of total of 141 reasons given for using the reserve.

CURRENT USE OF OCEAN BREEZE RESERVE	TIMES MENTIONED
access	27
walking	25
dog walking	21
playing with children	16
games (cricket, football, kites, frisbee)	12
exercise	7
relaxation and passive recreation	7
riding bikes	6
as open green space	5
picnics/BBQs	5
meeting friends and neighbours	4
view	2
bird watching	2
running	1
community gatherings	1



Question 4

What are the things that you like most about the reserve at present?

Out of 150 participants, 115 responded to this question and 35 skipped the question. There was a group of 13 who chose to answer the question but indicated they did not currently like anything about the reserve. The stand out reason for liking the reserve in its current state was that it represents open space. Sometimes this comment was mentioned relative to the reserve being remnant open space in an otherwise developed, or to be developed, area. Other reasons listed as popular for liking the reserve including it provides a green space, it is peaceful and quiet and that is has trees and shade.

Some of the comments received....

*“I like that families can come and hit a ball or run around with their kids like I did when my kids were growing up.”*

*“Its just close to home so I can just go there easily.”*

*“The open space and serenity.”*

*“Open space for activities of your choice”*

*“Quiet and green”*

*“One of the only green spaces left in Lennox”*

*“It’s completely safe and doesn’t exclude any member of the community by catering to a small minority.”*

*“The possibilities”*

*“A great short cut”*

*“That it is a calm and quite place where one is reminded of the wild and natural beauty.”*

*“It’s a great open area to play or relax.”*

*“It’s a space where I can take my grandchildren to play ball.”*

RESPONSES	TIMES MENTIONED
it provides open space	57
it is a green space	16
it is peaceful and quiet	16
there is nothing to like about it	13
the trees and shade	11
it is close to my home	9
there are open areas for play	9
it is family friendly and safe for children	7
caters for passive and active recreation	6
its potential to be developed as a community area	6
it is safe within no anti social behaviour	5
it is hidden away	5
it can be used by all ages	5
central location	4
is a community focal point	4
its natural appearance	4
the emptiness of the reserve and lack of development	4
it has an attractive outlook	3
it is a thoroughfare to the town centre	3
it is easy to access	3
it is good for dogs	2
there is little traffic	2
it is well maintained	2
the bird life	2
away from busy Coast Road	1
spacious	1
the balance between vegetation and open space	1
flexibility of the space	1
the park like character	1



Question 5

What, if anything, do you dislike about the reserve at present?

Out of 150 participants, 97 responded to this question and 53 skipped the question. There was a group of 16 who chose to the answer the question but indicated they did not currently dislike anything about the reserve. For those that did dislike characteristics about the reserve the stand out reasons were that the reserve was under utilised, that areas became wet and boggy after rain and that there is a lack of facilities at the reserve. Other reasons for disliking the reserve included a lack of trees and landscaping, poor mowing and maintenance and uncontrolled weeds.

Some of the comments received....

*“I dislike the prospect of losing this area. This reserve has been the focal point of our community over many years.”*

*“I dislike that the ground is often very soft and wet and difficult to walk on.”*

*“It’s a bit boring.”*

*“Unattractive, uninviting, poorly signed, no shade or beauty”*

*“Could be maintained a little better”*

*“Not enough shade trees”*

*“It is not making best use of its potential”*

*“I love it. Leave it be.”*

*“There’s nothing there.”*

*“Not utilised as a public space”*

*“Wasted opportunity”*

*“No facilities available in the park”*

RESPONSES	TIMES MENTIONED
nothing, I like it as it is	16
under utilised	16
soft and wet ground after rain	15
lack of facilities and interest	15
lack of trees and landscaping	8
lack of maintenance and mowing	8
weeds	5
lack of footpaths	3
feels like ‘trespassing’ on someone’s back yard	3
prospect of a community garden or BMX track in reserve	2
Council’s previous planning approach to reserve	2
uneven ground	2
unattractive	2
prospect of losing the open space area	1
lonely place	1
concrete barricades end of Hutley Drive	1
dirty stormwater drains	1
lack of awareness of park	1
road nearby	1
kids on motorbikes	1
car parking on reserve	1
mosquitoes	1
lack of a bike track for kids	1



## Question 6

Please indicate how desirable the following possible features are for the reserve?

Out of 150 participants, the respondents on each facility varied between 139 to 147. It could be assumed that those that didn't indicate a desire or non desire for a facility were have a neutral attitude to that facility, however, in the event that is an incorrect assumption those numbers have not been added in. The following table indicates the responses to each facility. The graphs over pages, combine the 'undesirable' and the 'desirable' scales to provide a visual assessment of the results. The graphs have been ordered from the most desirable facilities to the least desired facilities.

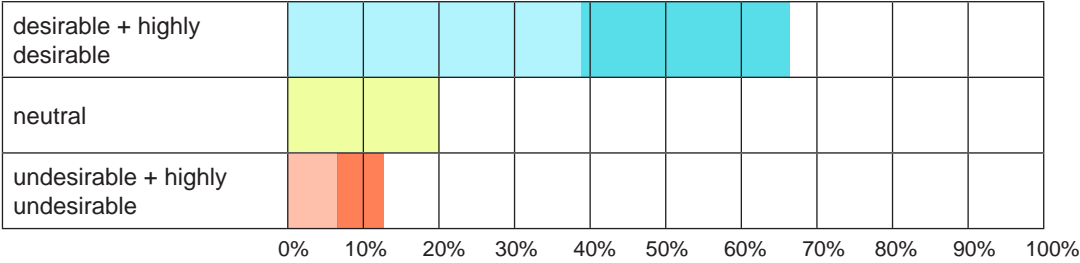
Respondents identified the most desired facilities as 'passive open space' and 'walking paths'. The next most desired facilities were 'community food garden', 'play equipment', 'facilities for younger children' and 'cycling paths'. Also identified as more desirable than not, were 'BBQ and picnic facilities', 'exercise stations' and 'facilities for older community members'. 'Bike parking' and 'facilities for older children' were found to be more desired than not, but not particularly strongly so.

Whilst a 'dog exercise area' was found to be desirable, there was also a high proportion of the respondents who felt this facility was almost as undesirable. 'Ornamental Garden' did not received a strong response in any one area. The facilities identified as most undesirable included 'vehicle parking', 'BMX track', 'skate boarding infrastructure' and 'sports equipment'/ fields/courts'.

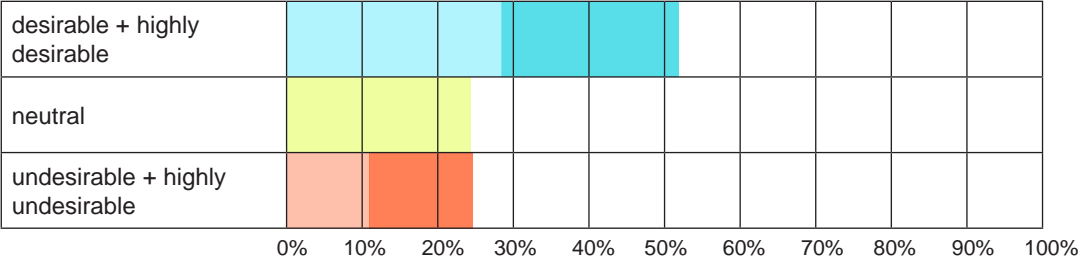
POSSIBLE FEATURES	highly undesirable	undesirable	neutral	desirable	highly desirable
BBQ and picnic facilities	11.81%	9.72%	29.17%	32.64%	16.67%
Dog exercise area	22.86%	10.71%	20.00%	28.57%	17.86%
Play equipment	9.79%	9.09%	23.78%	34.27%	23.08%
Passive open space	7.69%	4.90%	21.68%	23.08%	42.66%
Sports equipment/fields/courts	32.84%	28.36%	21.64%	11.94%	5.22%
Exercise stations	10.87%	16.67%	26.81%	30.43%	15.22%
Community food garden	14.97%	6.80%	19.73%	25.17%	33.33%
Ornamental gardens	13.97%	16.91%	29.41%	27.21%	12.50%
Vehicle parking	50.00%	15.09%	13.57%	16.43%	5.00%
Bike parking	21.99%	5.67%	25.53%	27.66%	19.15%
Walking paths	5.52%	7.59%	20.00%	39.31%	27.59%
Cycling paths	13.67%	10.79%	23.74%	28.78%	23.02%
BMX track	44.37%	13.38%	13.38%	14.79%	14.08%
Skate boarding infrastructure	52.52%	13.67%	16.55%	10.79%	6.47%
Facilities for older community members	13.19%	7.64%	30.56%	26.39%	22.22%
Facilities for younger children	8.45%	11.97%	23.94%	38.03%	17.61%
Facilities for older children	14.89%	12.77%	29.08%	30.50%	12.77%



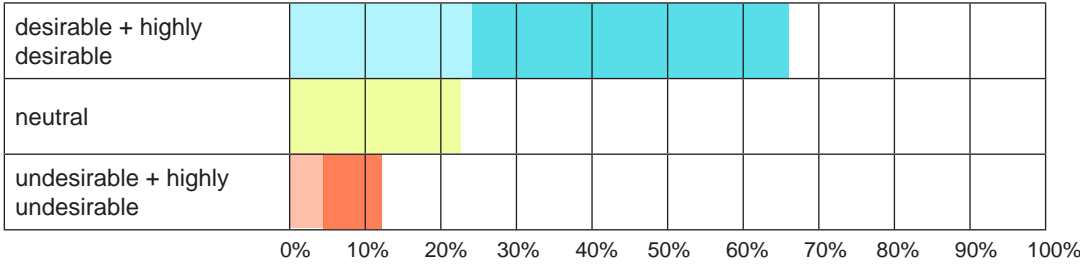
Walking Paths



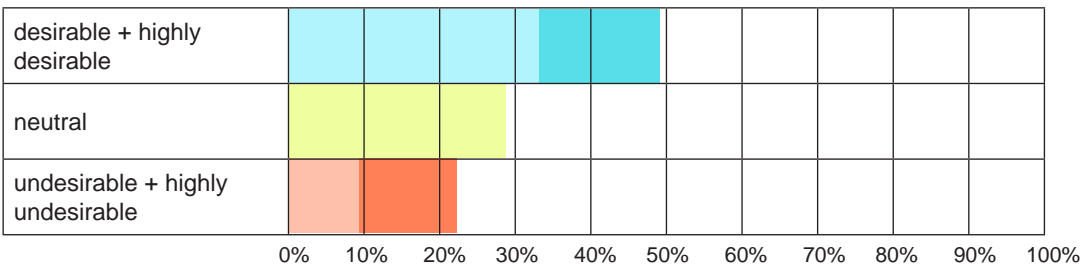
Cycling Paths



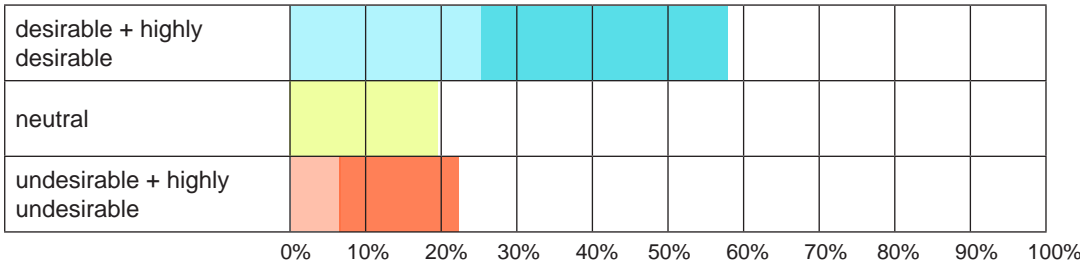
Passive Open Space



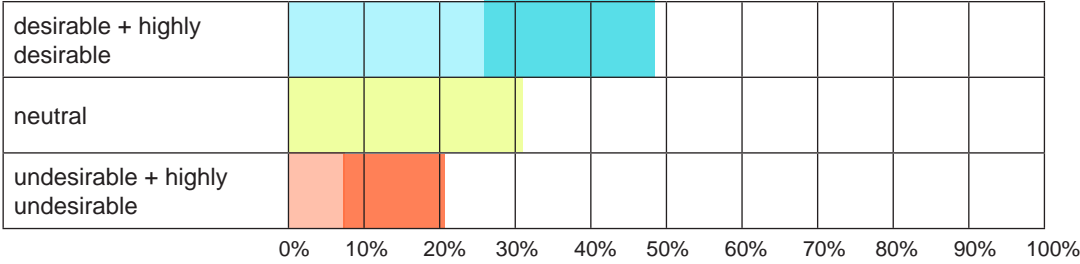
BBQ and picnic facilities



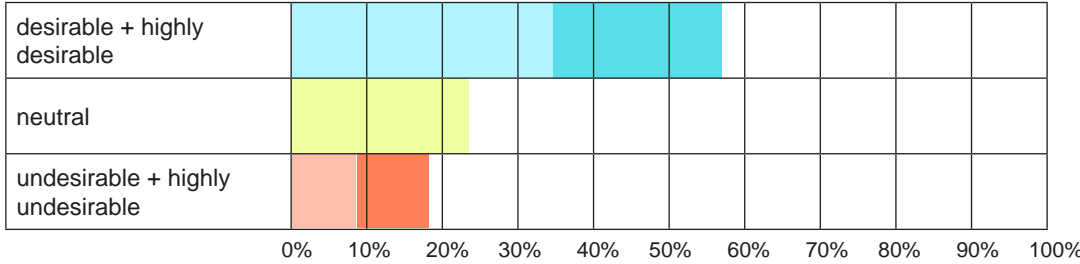
Community Food Garden



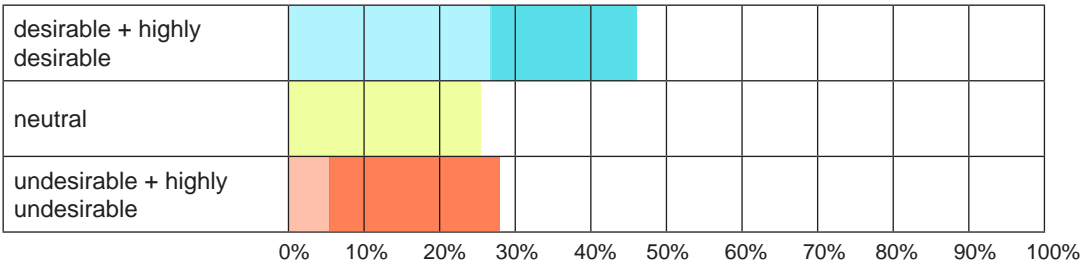
Facilities for older community members



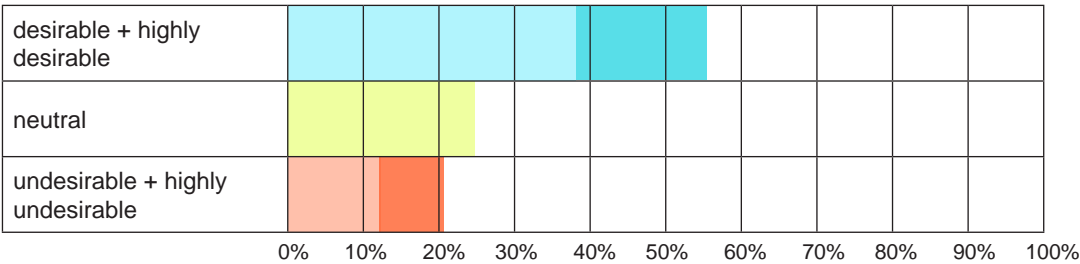
Play Equipment



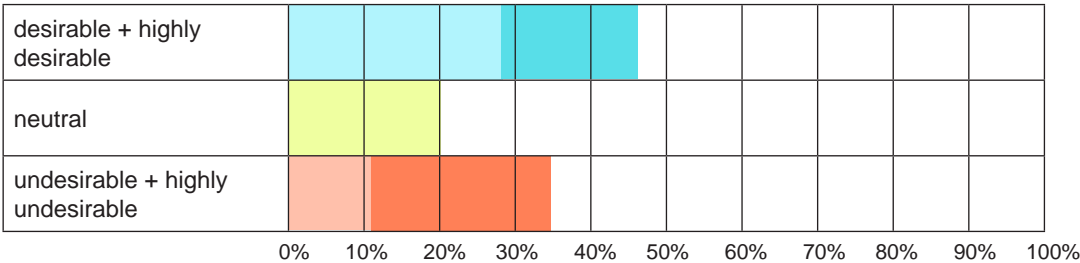
Bike Parking



Facilities for younger children

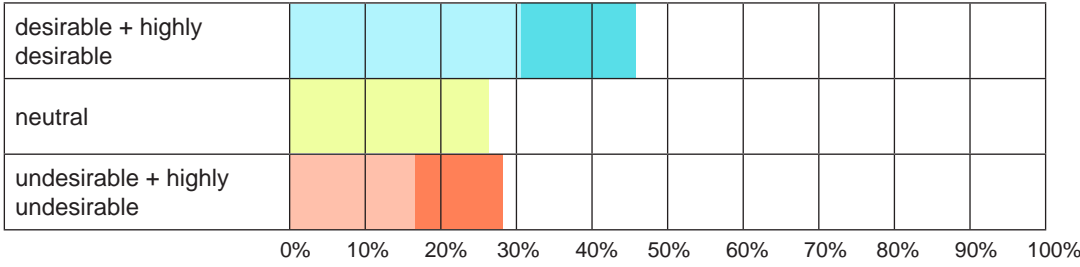


Dog Exercise Area

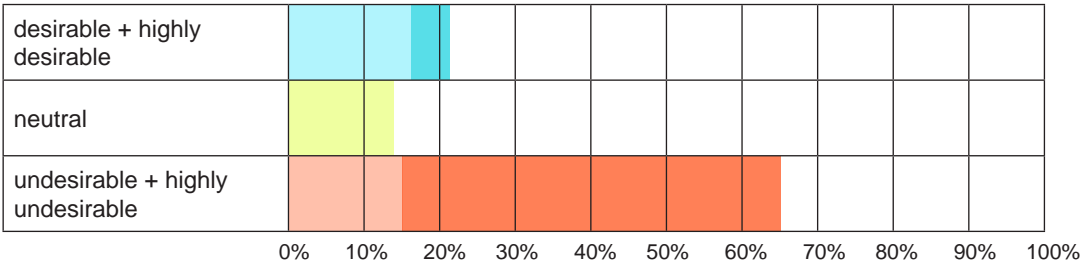




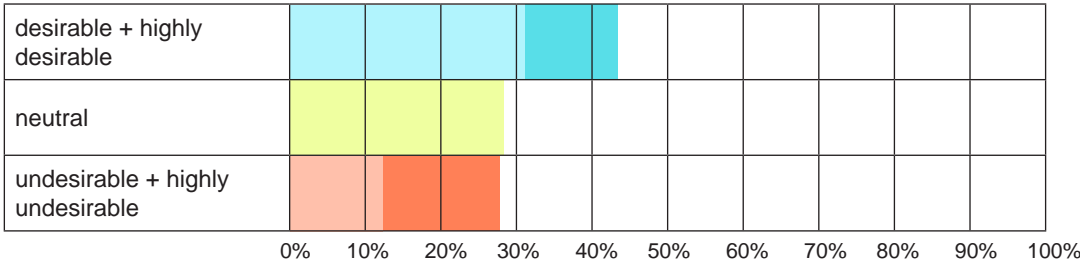
Exercise Stations



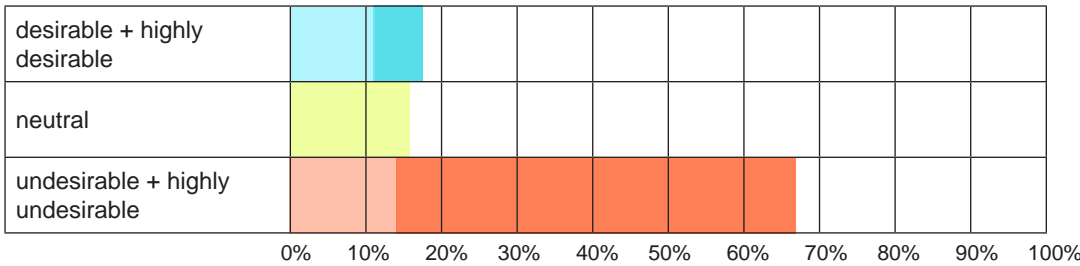
Vehicle Parking



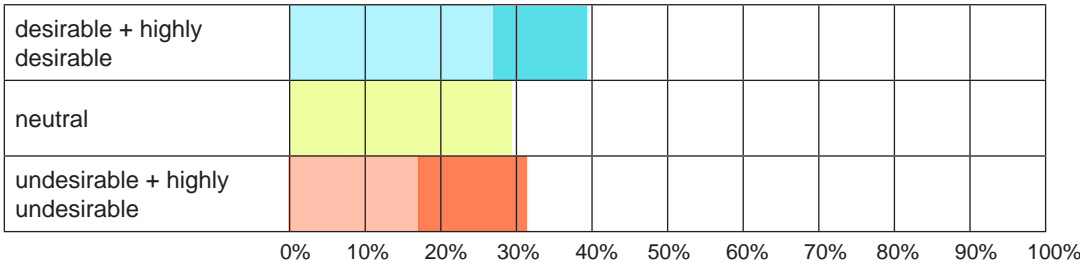
Facilities for older children



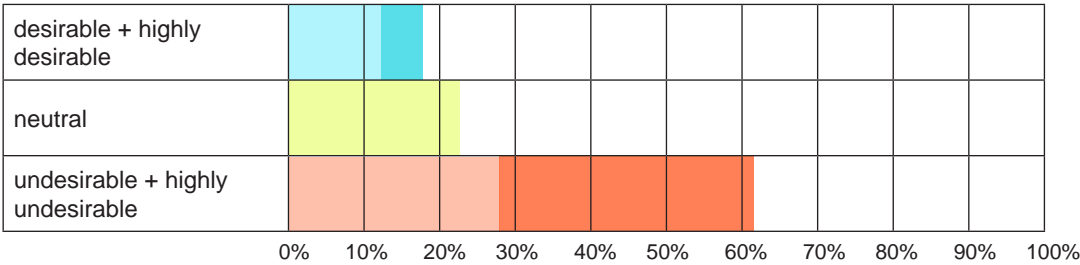
Skate boarding infrastructure



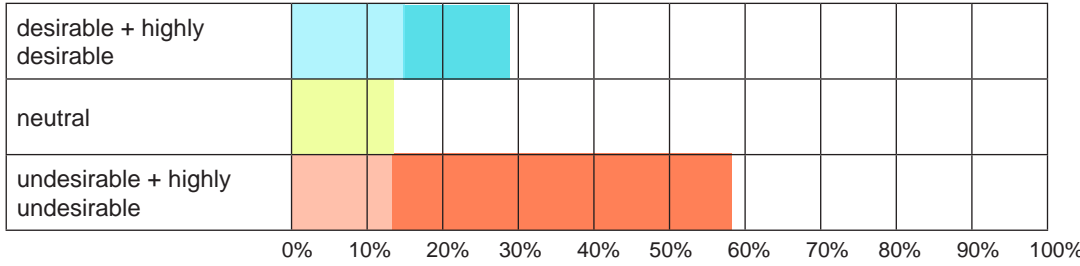
Ornamental Gardens



Sports equipment/fields/courts



BMX track





Question 6 continued  
Are there other facilities or improvements that you think are useful or desirable? Please tell us what they are:

Response to this question included additional ideas for facilities as well other respondents providing more detail on facilities already identified. The most commonly identified additional facilities were toilets, bins and access to water. Eight people reinforced the desire for the retention of the open space. Shade structures were also identified as a desirable facility by five people. A number of respondents expressed their desired for the reserve to include native vegetation as a setting for recreational facilities, for shade and to retain areas of native bushland. Other recreational facilities identifies were a concrete pump track and a basketball half court and hoop.

Some of the comments received....

*“A happy place where all ages can come and enjoy themselves”*

*“Council needs to address issues such as garbage collection and removal, water for drinking purposes and toilets”*

*“I was very surprised and disappointed that no option has been included in this survey for natural bushland.... My vision of the park is to landscape the park to provide recreation opportunities in a natural bushland setting.... Simple things like eco-treasure walks are innovative opportunities to encourage children to learn about the outside environment.”*

*“Less emphasis on organised sport and more emphasis for families to use open green spaces.”*

*“Plenty of shaded areas”*

*“Toilet facilities, shade structures (e.g. gazebo)”*

*“Pump track not BMX track as they are more usable for kids”*

*“I would like to see a food forest on this land, bush tucker garden and edible garden mandala, something for everyone to enjoy.”*

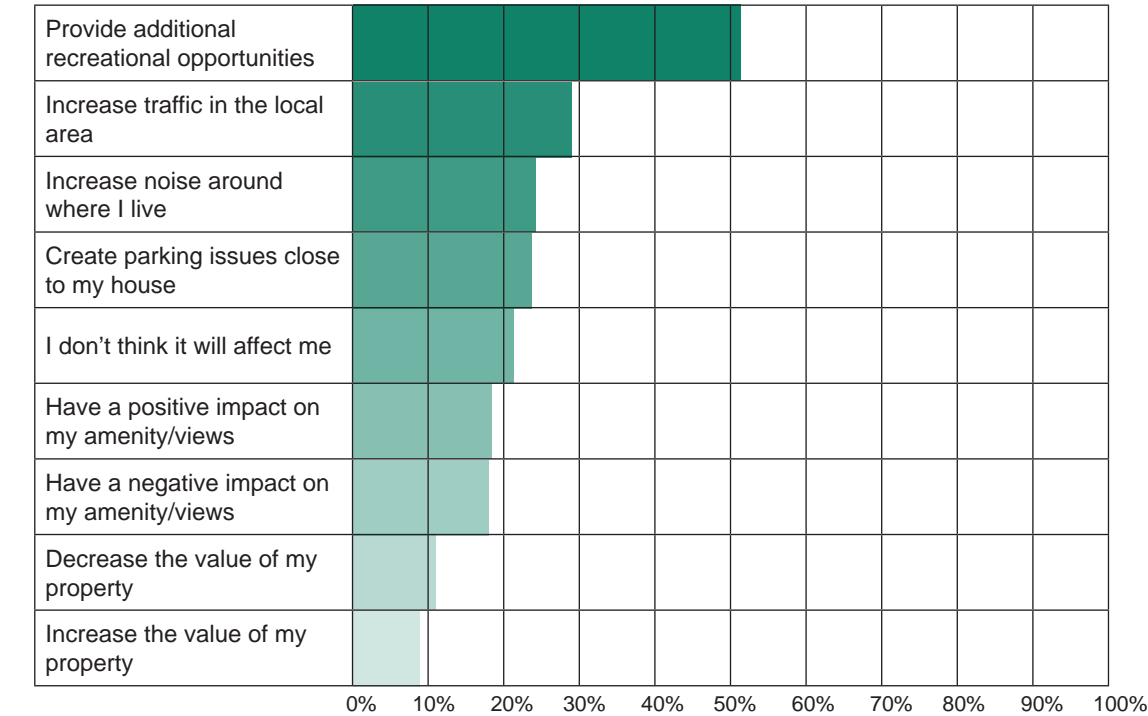
RESPONSES	TIMES MENTIONED
garbage bins, toilets, bubblers and taps	12
retain open space	8
shaded and weather proof areas	5
pump track	3
native vegetation	3
basket ball hoop/half court	2
recreational facilities set in natural bushland	2
more trees for shade	2
wave pool	1
safe facilities for younger children	1
fenced dog off leash area	1
a place for all ages	1
creative sculptures set in park with native planting	1
planting and ponds to assist with drainage	1
vegetation along Hutley Road extension	1
a place for families	1
rotunda for outdoor performances	1
better maintenance and mowing	1
lighting	1
drainage	1
bush tucker garden, edible mandala garden	1
seats to enjoy bird life and ambience	1
mountain bike park	1
open space for ball playing	1
better topsoil	1



Question 7

How might changes in the reserve to provide additional facilities affect you?

Of 150 participants, 138 responded to this question and 12 skipped the question. 61.59% of respondents indicated the provision of additional facilities in the reserve would be likely to affect them in a positive way by providing additional recreational opportunities. The next most anticipated changes were negative changes relating to potential increases in traffic, noise and parking issues around their homes. Respondents were given the opportunity to identify other potential changes. A positive change of benefiting and uniting the community was mentioned 11 times.



OTHER COMMENTS	TIMES MENTIONED
benefit and unite the community	11
decreased recreational opportunities	1
potential between current and future users	1
environmental impacts associated with removal of wetland	1
safer walking route to town	1
bring crime and violence	1
destruction of nature	1
positive impact for children	1
residents cannot be relied on to be passive surveillance	1



**Question 8**

**Any other comments or suggestions? Please tell us.**

There were 53 comments provided at this question. The comments were diverse and ranged from requests the reserve stay as it is to requests for changes. Much of the comment related to the previous proposals for a community garden and BMX bike track.

RESPONSES	TIMES MENTIONED
leave it as it is	13
we support a community garden	6
a BMX track would be a unique addition and great for kids	3
park is under utilised	2
open space areas should be protected and not used for small community groups rather than current users	2
skate park or BMX track will increase anti-social behaviour and noise in the area	2
don't waste land on parking spaces, use land wisely	2
construct a walking path from Hutley Drive to the roundabout	1
the Lennox Head Residents Association does not represent all the residents of Lennox Head	1
specific requests for facilities such as community gardens and BMX tracks should be put upon developers	1
a playground and BBQ facility would be good	1
we don't object to a BMX track or community garden but we won't use them	1
natural bushland with cycling/waking tracks and unobtrusive interpretive signage about flora and fauna	1
reserve needs to have adequate safety provisions rather than rely on surveillance by neighbours	1
a place for quiet enjoyment with seats and picnic tables, a sculpture park and landscape parkland	1
listen to the community	1
ask the 'Lennox Meadows' community what they want	1
no BMX track or skate park as these facilities already exist	1
community tennis court, practice wall for kids and kids play equipment would be great	1
too much spent on sports facilities at sacrifice of quiet recreational areas	1
keep it well maintained	1
mountain bike is popular and there is nowhere to ride locally	1
additional facilities will add to the community and increase community cohesion	1
consideration should be given to the busy road that will be beside the reserve	1
safety and traffic management is vital	1
survey only being done because Council couldn't bully residents impacted by ill thought out plans	1
improvements should be environmentally friendly and low impact	1

**Question 9**  
**Would you like to keep in touch with the progress of the Ocean Breeze Master Plan Project?**

Of the respondents 58.5% indicated they would like to be kept up to date with the project and 42.18% indicated they didn't want to be kept up to date with the progress of the project. Those respondents who answered yes, provided their contact details to council.