

MASTER PLAN PRIORITIES

The background research and consultation phase identified a range of priorities important in evolving the Ocean Breeze Reserve Master Plan. The master plan priorities are:

Community

- provide a master plan that genuinely reflects community sentiment;
- provide sufficient detail about concepts so the community can evaluate proposals;
- retain the character of the reserve and its function as a place for social gatherings;
- create a reserve that can be used and enjoyed by all people of all abilities;
- respect those interested in the reserve’s future including those who live close to the reserve, in the neighbourhood and in the broader Lennox Head community;
- respect that interest in the reserve comes from existing and potential users;
- respect current uses of the reserve that are supported by the community; and
- provide opportunities for the community to connect and interact.

Environment

- consider potential environmental impacts;
- consider the existing reserve vegetation;
- consider the impact of proposals on stormwater runoff and accumulation;
- provide for suitable drainage within the reserve; and
- consider the use of native planting and potential revegetation areas.

Connections

- provide a public reserve that is well connected physically to the community.

Infrastructure

- design a reserve that reflects future planning for the Hutley Drive extension; and
- protect the existing services of sewer, stormwater and water mains.

Facilities

- locate facilities with consideration to the surrounding land uses;
- retain and enhance the positive characteristics of the reserve including its serenity, shade trees and as a safe play space for children;
- enhance the reserve with appropriate facilities and a character that encourages use and enjoyment of the reserve;
- consider the provision of facilities in response to the outcomes of the community consultation;
- consider the provision of facilities the community identified as being desirable including ‘walking paths’ and ‘passive open space’;
- consider other facilities identified as desirable by the community including a ‘community food garden’, ‘play equipment’, ‘facilities for younger children’, ‘cycling paths’, ‘BBQ and picnic facilities’, ‘exercise stations’ and ‘facilities for older community members’;
- consider the inclusion of a ‘dog exercise area’ but recognise that the community support for this facility was matched by its lack of support;
- avoid the inclusion of items not strongly supported by the community including ‘ornamental gardens’, ‘vehicle parking’, ‘BMX track’, skateboarding infrastructure’ and ‘sports equipment/fields/courts’;
- consider what supporting infrastructure may be required such as toilets, bins, bubblers and shade; and
- provide opportunities for other items to be included such as sculptures, public art works and interpretive signage.

Maintenance

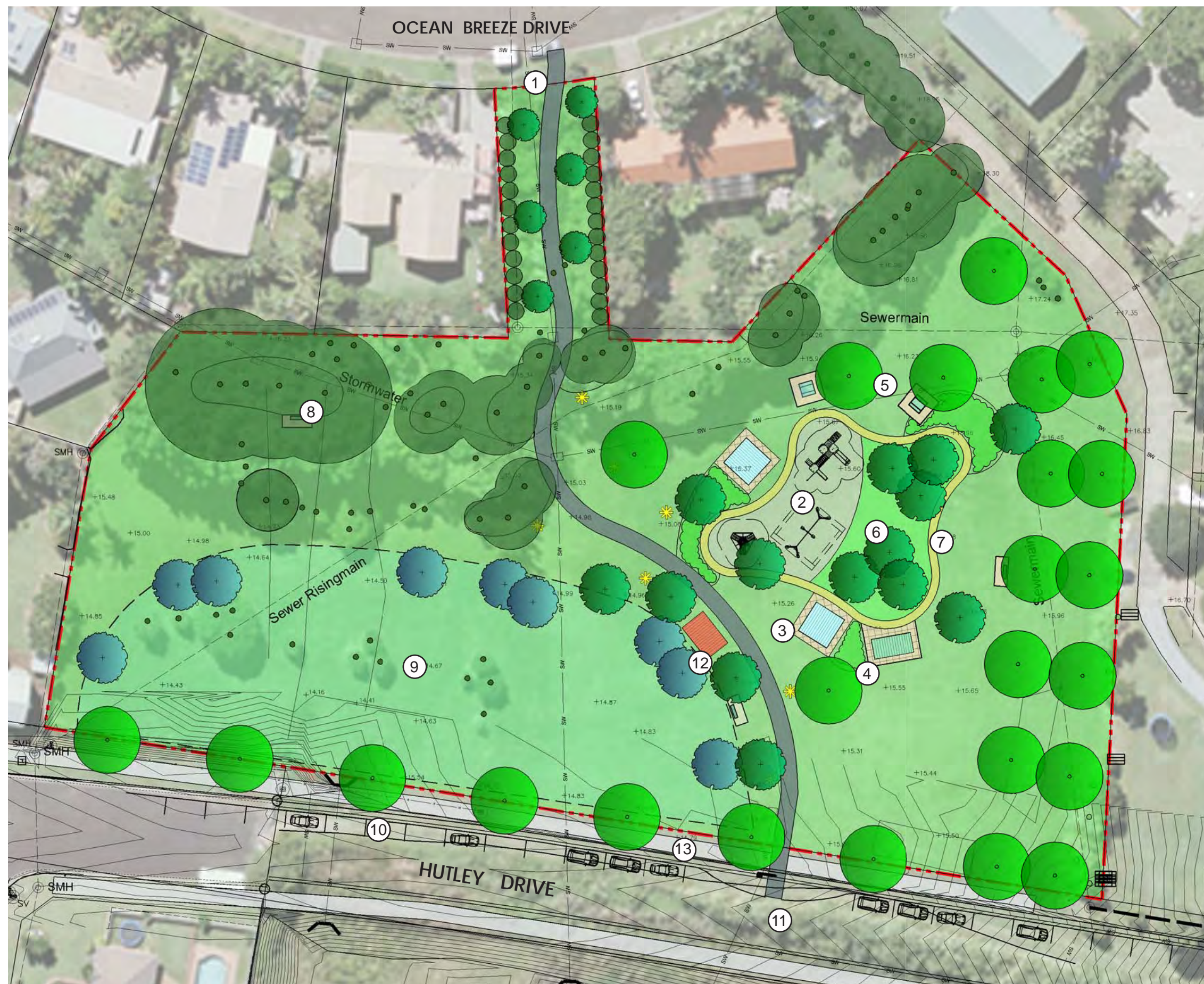
- consider the long term maintenance and mowing of the reserve.

Amenity

- consider potential views in to and from the reserve; and
- create a reserve with high visual amenity.

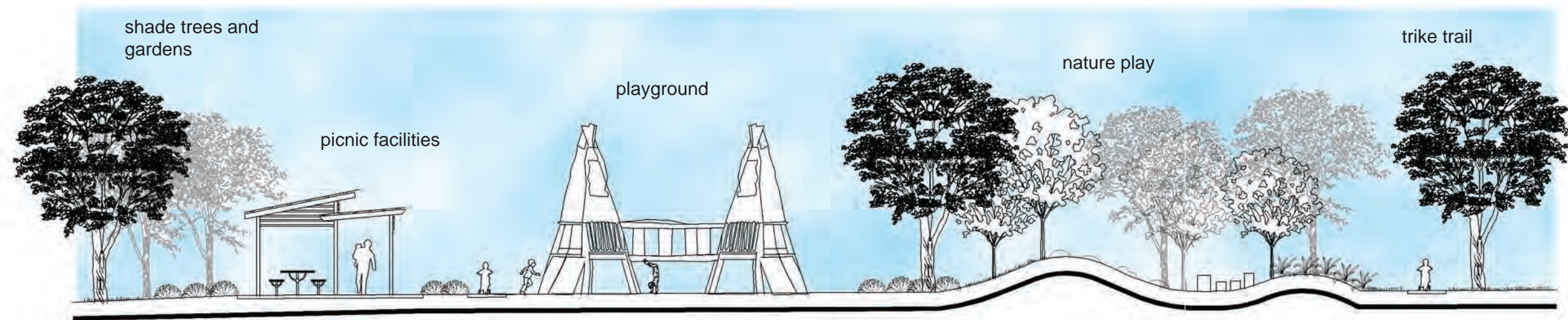
Safety

- provide for pedestrian safety along Hutley Drive;
- consider the potential for changes to traffic movements and the amount of traffic;
- design to minimise the potential for anti-social behaviour and vandalism; and
- design to maximise the safety of park users, in particular, children.

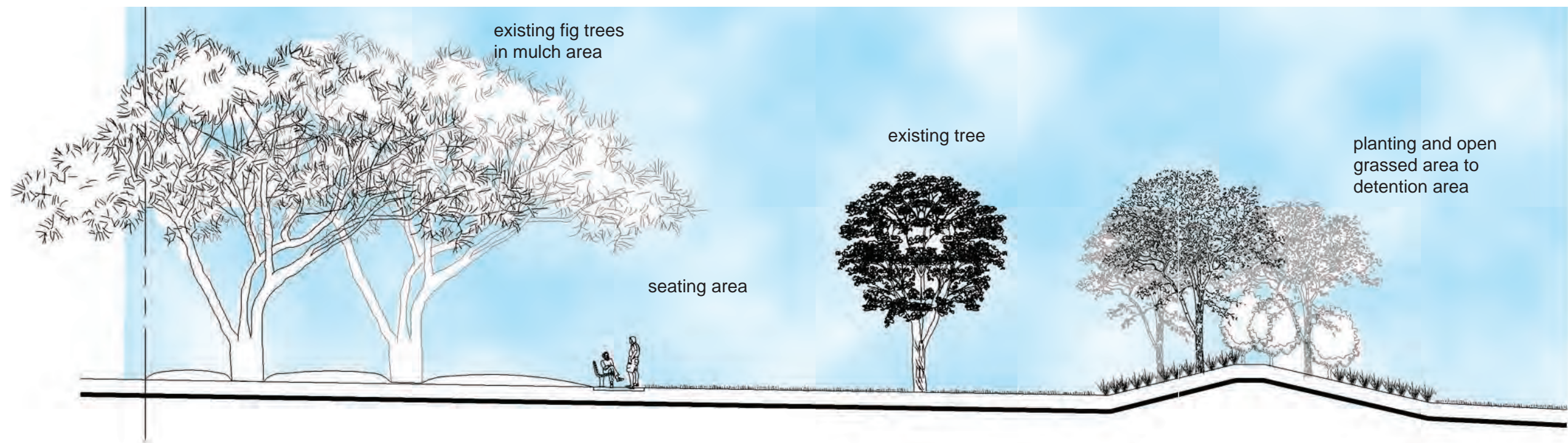


LEGEND

- existing tree removed
- existing tree retained
- tall shade trees
- tree planting to basin
- shade trees
- mulched area
- 2.5m path to Hutley Drive
- 2m path/cycle way
- exercise station
- ① reserve entry, existing vegetation removed, screen planting at boundaries & scattered tree planting
- ② childrens play ground
- ③ shade shelter with picnic facilities
- ④ BBQ facilities
- ⑤ picnic settings & shade trees
- ⑥ nature play area with nature based play items (logs, boulders, steppers)
- ⑦ concrete path as trike trail for young children
- ⑧ seating areas under shade trees
- ⑨ grassed stormwater detention area/ open space
- ⑩ on street car parking
- ⑪ pedestrian refuge
- ⑫ public toilet
- ⑬ 2.5m path to Hutley Drive



Concept One Cross Section
Playground, trike trail and picnic facilities



Concept One Cross Section
Retained figs trees, seating and grassed open space

CONCEPT ONE - RATIONALE

Hutley Drive Extension

Concept One reflects and integrates future planning for the Hutley Drive extension including the requirements for a stormwater detention area. Future drainage for the Hutley Drive extension will require a detention area for stormwater management and the required area has been sited on the lowest part of the reserve.

Concept One suggest that as part of planning for the Hutley Drive extension, consideration be given to on street parking and a 2.5m concrete path along the northern side of Hutley Drive. This will provide easy access from parking to the reserve’s southern entry. A row of tall shade trees with clear trunks will provide clear views into the park and add to the reserve’s amenity.

Connections

Concept One formalises existing walking routes through the reserve including from Ocean Breeze Drive to Hutley Drive and the existing end of Hutley Drive up to North Coast Road. It is proposed the central path through the reserve be a 2m wide concrete path. It is proposed the northern entry of the reserve has existing vegetation removed to increase visibility and awareness of the access to the reserve. New shrub planting along the boundaries could provide a visual screen for neighbouring properties and shade trees sited along the path will add to the amenity of the reserve entry.

Facilities

Concept One provides a number of the facilities identified as desirable during the community consultation phase. These include walking/cycle paths, passive open space, play equipment, BBQ and picnic facilities and exercise stations. Proposed facilities provide for a variety of age groups and abilities.

Facilities and active spaces have been located in highly visible areas away from drainage areas and close to the centre of the reserve away from adjacent land uses. Facilities have been located with a focus on being highly visible from Hutley Drive whilst being a suitable distance from this future busy road.

Relevant facilities have been sited together but the intention is to not make the provision of all facilities related to the playground. There are opportunities for passive relaxation at shaded seating spots and opportunities for informal play such as ball games.

Exercise stations are proposed along the central pathway and it is intended these could be sited relative to shade tree planting.

Character

Concept One seeks to achieve a balance between retaining those characteristics identified by some community members as popular (e.g. vegetation, serenity and open space) with additional facilities. It is suggested that the reserve incorporate natural materials such as timber and stone and that these materials could also be incorporated in the playground with nature play items such as climbing boulders and timber stepping poles sited under new shade tree planting. Soft fall mulch, rather than rubberised soft fall, will contribute to making the play elements appear more natural and less urban in character. Play equipment could also incorporate more natural materials such as timber and could be integrated into the landscape with gardens, suitable garden edges and grassed mounding.

There is the potential for small scale art works to be incorporated in the design of the reserve and these designs could reflect natural elements such a local bird life or flora. Art works could be incorporated in furniture elements such as bins and shelters or could be as subtle as cast elements sited on boulders in garden areas.

All new facilities could be visually ‘softened’ with picnic facilities, shelters and other infrastructure sited amongst low planting of indigenous flowering shrubs and groundcovers.

Vegetation

Concept One recommends the removal of some existing trees due to their proximity to services, being an inappropriate species or to enhance particular functions of the reserve. It is proposed the understory to the retained trees be tidied up and some areas under pruned to removed the potential for mosquito breeding and to allow some use of these areas.

New planting would incorporate shade trees, tree and shrub planting to the detention basin, understory planting around the playground and tree planting to the edge of the reserve. The intention would be to maintain views into and across the park, to add shade to facilities and to add to the amenity of the reserve. There would be a focus on utilising local indigenous species.

Maintenance

A designed detention area will assist in managing stormwater at the reserve. Mulching the retained trees will assist in easier mowing of the reserve. Species selection should focus on using reliable indigenous species. Tree planting, the layout of gardens and the set out of infrastructure should be designed to ensure easy mowing of the reserve. Materials need to be robust and infrastructure must be designed/selected to minimise the potential for vandalism.



public toilets



shade shelters, picnic facilities, park furniture and seating in shaded locations



trees allowing views into the reserve



path providing link through reserve



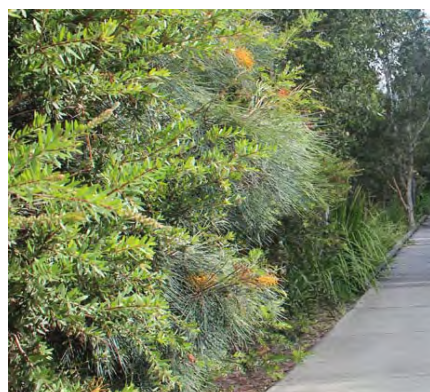
open space retained for informal play



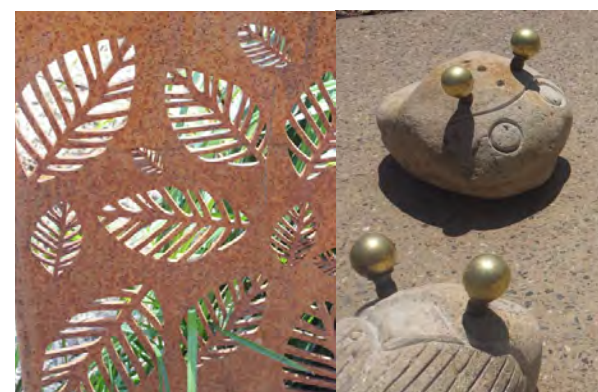
grassed detention area with tree planting



childrens play area with play equipment and nature play elements



native planting



potential to include art works in landscape



childrens bike trail around play area



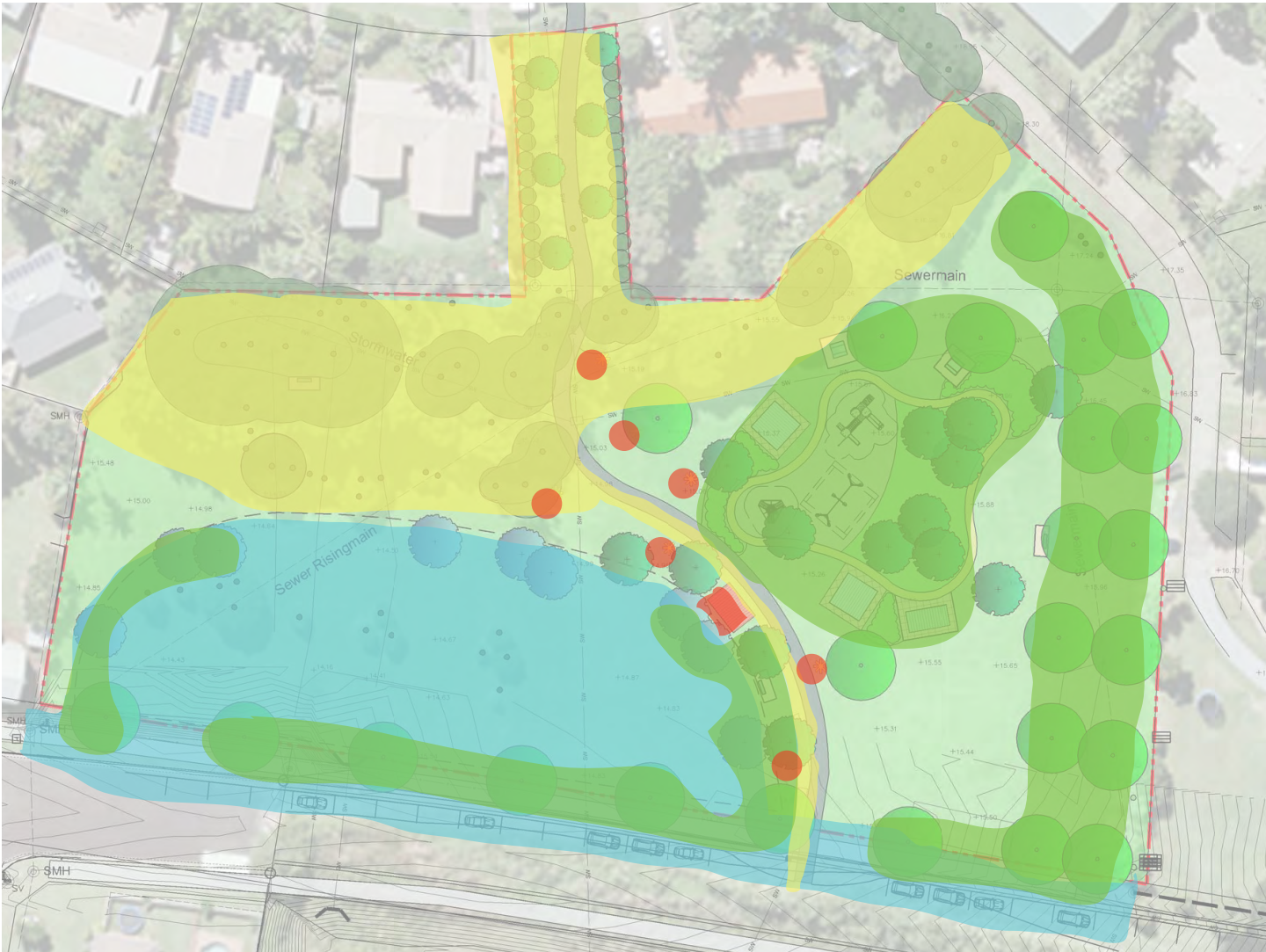
exercise stations under shade trees

Anticipated Costs

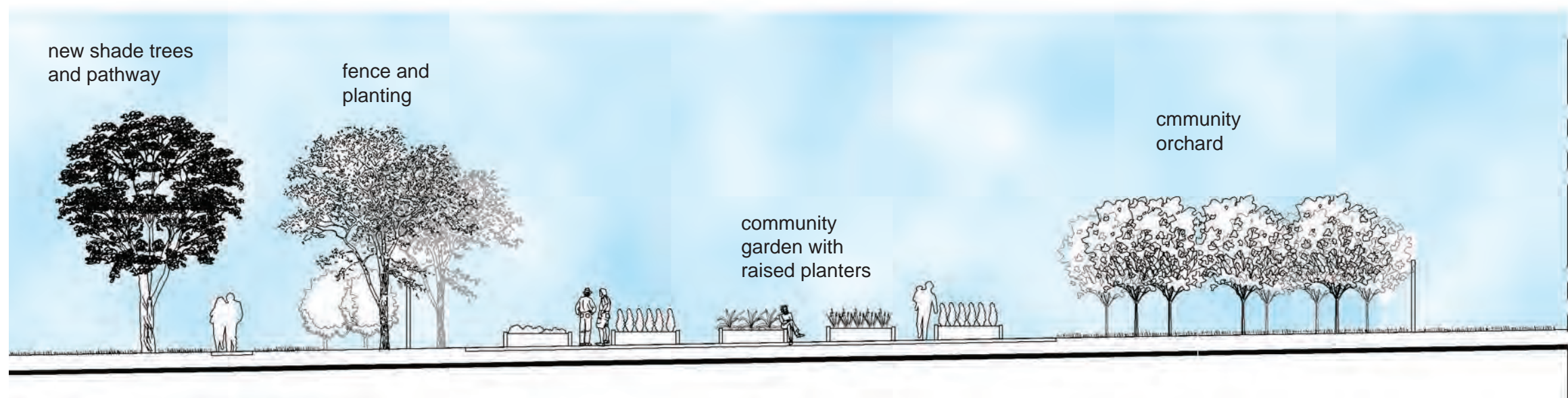
PROPOSED ITEM	QUANTITY	ANTICIPATED COST
Preparation & Site Establishment		
site establishment for construction site		\$ 1 500
tree removal & under pruning of retained trees		\$ 3 500
earth works to playground and picnic area		\$ 2 000
Infrastructure		
new toilet block		\$ 80 000
central concrete pathway (2m wide)	286m ²	\$ 30 000
picnic shelters	2	\$ 24 000
picnic settings (including to shelters)	4	\$ 10 000
BBQ & BBQ shelter	1	\$ 14 000
seats	3	\$ 6 000
water bubbler + tap + provision of water	1	\$ 6 000
bins	2	\$ 4 000
concrete slabs to shelters, picnic settings & seats	120m ²	\$ 12 000
reserve signs at entries	2	\$ 2 400
Playground		
play equipment		\$ 100 000
nature play area (logs, timber steps, boulders)		\$ 15 000
softfall (rubber)	310m ²	\$ 38 000
subsoil drainage to playground		\$ 4 000
coloured concrete trike trail for children	140m ³	\$ 15 400
garden and softfall edging	80m	\$ 2 400
Planting & Turf		
new tree planting	50	\$ 3 500
garden areas	200m ³	\$ 7 000
mulch to retained trees	680m ³	\$ 5 000
new turf	400m ³	\$ 4 000
Exercise Stations		
exercise stations	7	\$ 14 000
TOTAL		\$ 403 700

Note: This estimation of costs excludes the cost of the grassed detention basin, on street parking and the concrete path on the northern side of Hutley Drive. It is assumed these works would be part of the works associated with the extension of Hutley Drive.

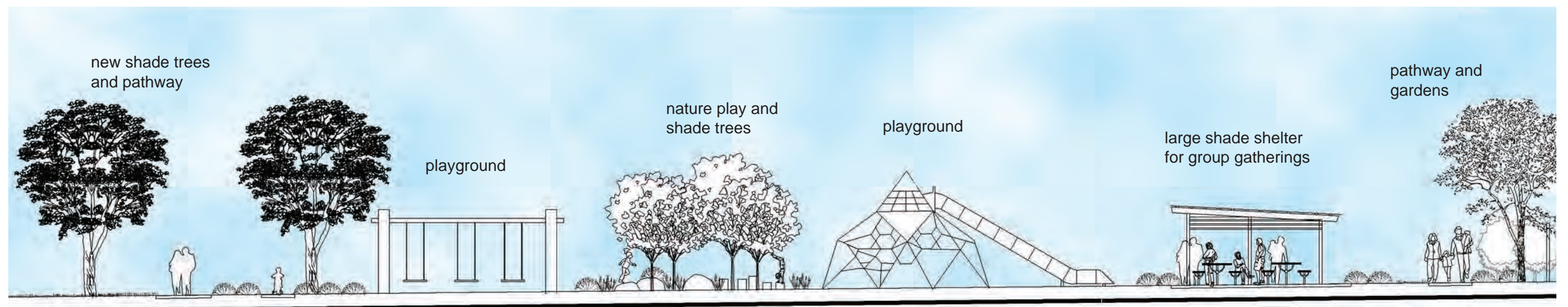
Proposed Staging



	Stage One <ul style="list-style-type: none">• on street parking• concrete path on northern side of Hutley Drive• grassed stormwater detention area/open space	part of Hutley Drive extension works
	Stage Two <ul style="list-style-type: none">• site establishment• tree removal and under pruning• mulching to retained trees• central concrete path• entry planting at northern entry + sign	\$ 43 500
	Stage Three <ul style="list-style-type: none">• playground including subsoil drainage and softfall• nature play and trike trail• picnic shelters, park furniture, signage and slabs to furniture• new tree planting, gardens and turf	\$ 266 200
	Stage Four <ul style="list-style-type: none">• public toilet• exercise stations	\$ 94 000
	TOTAL	\$ 403 700



Concept Two Cross Section
Path, tree planting and community garden



Concept Two Cross Section
Pathways, playground and large shade shelter

CONCEPT TWO - RATIONALE

Hutley Drive Extension

Concept Two again reflects and integrates future planning for the Hutley Drive extension including the requirements for a stormwater detention area. The required detention area has been sited on the lowest part of the reserve, however, this concept locates the basin further north to allow for the central path through the reserve to be a more direct connection to Hutley Drive.

Concept Two also suggests, that as part of the planning for the Hutley Drive extension, consideration be given to on street parking and a concrete path along the northern side of Hutley Drive. This will provide easy access from parking to the reserve’s southern entry. An informal arrangement of tall, clear trunk trees along Hutley Drive would provide clear views into the reserve.

Connections

Concept Two formalises existing walking routes through the reserve from Ocean Breeze Drive to Hutley Drive and from Hutley Drive to North Coast Road. In addition, this concept reflects the community’s expressed desire for walking paths and proposes a second path meandering around the outside of the reserve. This path could be exposed aggregate, stencilled concrete or coloured bitumen. It would provide an opportunity to enjoy the existing trees and access shaded seating locations. This route could be enhanced with indigenous gardens and tree planting. Vegetation is removed at the northern entry to increase visibility of this public access.

Facilities

Concept Two provides a broader range of the facilities identified as desirable during community consultation. These include walking/cycle paths, passive open space, a community food garden, play equipment, BBQ and picnic facilities, exercise stations and facilities for a range of ages. This concept suggests the detention basin could have a dual function as a fenced dog exercise area. It is recognised this facility was equally desirable and undesirable to the community and, as such, has been located away from other facilities.

The community garden is located in the northeast of the site and could be fenced or unfenced. There would be no on site parking for the garden, however, a restricted access could be provided to facilitate garden deliveries such as soil and mulch. This access could utilise reinforced turf cells and, when not in use, would read as part of the reserve’s open grassed space.

The garden could include raised vegetable gardens with decomposed granite pathways, an orchard, a small storage shed for hand tools and compost bins. Native food trees could be located beyond the fenced area as part of the reserve’s tree planting. Depending on community and Council sentiment, the garden could be left unfenced and could be integrated into the reserve landscape.

This concept includes a centrally located childrens playground and picnic and BBQ facilities. A larger shelter has been located between the playground and the community garden and could be used as a gathering space for community groups or family gatherings. The play area could incorporate nature play items amongst gardens and shade trees and gardens of indigenous plants could be sited in and around facilities to integrate them into an attractive setting.

A half basketball court is slightly set apart from the playground and further to the south is proposed exercise node under a shade sail. A public toilet is close to Hutley Drive in a highly visible location. The fenced dog off leash area would include a watering point for dogs, a bin receptacle and shaded seating locations.

Facilities and active spaces have been located away from drainage areas and neighbouring properties. The playground is in a highly visible location but is away from the busy Hutley Drive.

This concept provides a variety of facilities across the reserve. The intention is there would be both active and passive zones. Whilst the area around the playground may be an active zone, there would opportunities along the east-west trail for quiet seating areas.

Character

Concept Two has an emphasis on providing as many of the facilities as identified as desirable by the community as possible. In doing so, it uses more of the reserve open space. All facilities, however, would be integrated into the landscape with tree planting and gardens and an overall palette of materials and forms would create a reserve with a high visual amenity.

Vegetation

Concept Two recommends the removal of some existing trees due to their proximity to services, being an inappropriate species or to enhance particular functions of the reserve. It is proposed the understory to retained trees be tidied up and mulched to contribute to the reserve’s useability and amenity. New planting would incorporate indigenous species of trees, shrub and groundcovers.

Maintenance

A designed detention area will assist in managing stormwater at the reserve. Mulching the retained trees will assist in easier mowing of the reserve. Species selection should focus on using reliable indigenous species. Tree planting, the layout of gardens and the set out of infrastructure should be designed to ensure easy mowing of the reserve. Materials need to be robust and infrastructure must be designed/selected to minimise the potential for vandalism.



shade shelters, picnic facilities, BBQs, bike racks, seating and other park furniture



concrete path as main path

deco paths as secondary paths

fenced dog off leash area

grassed detention area/open space

tree planting at reserve edge



community garden with vegetable gardens, orchard, native food trees and work area

large shelter for group gatherings

exercise area with shade sail



childrens playground

half basketball court

public toilet

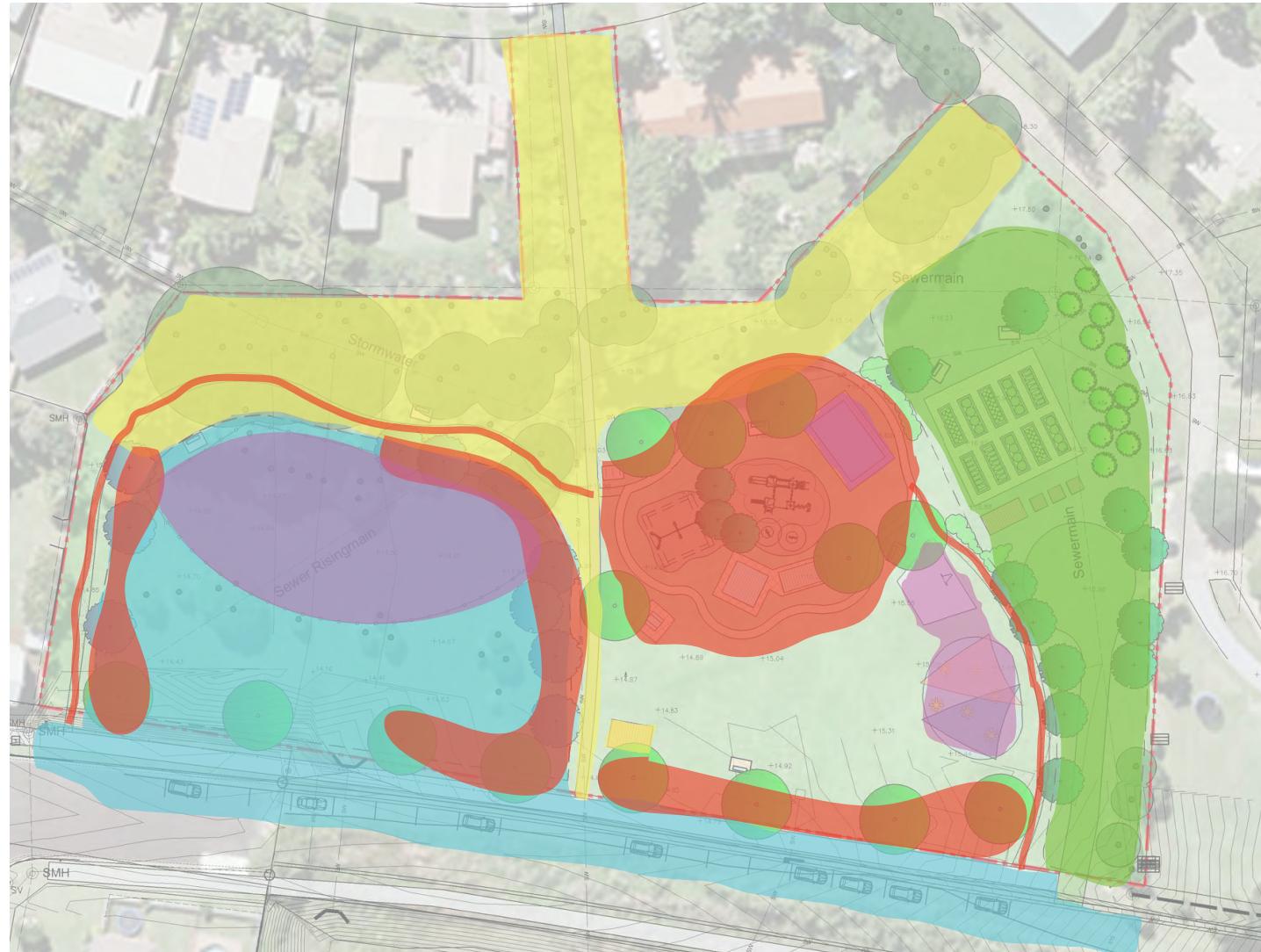
Anticipated Costs

PROPOSED ITEM	QUANTITY	ANTICIPATED COST
Preparation & Site Establishment		
site establishment for construction site		\$ 1 500
tree removal & underpruning of retained trees		\$ 3 500
earth works to playground and picnic area		\$ 2 000
Infrastructure		
new toilet block		\$ 80 000
central concrete pathway (1.5m wide)	170m ²	\$ 20 000
exposed aggregate path (1.2m wide)	216m ²	\$ 26 000
large shelter for group gatherings		\$ 20 000
picnic shelter	1	\$ 12 000
picnic settings (including to shelters)	5	\$ 12 500
BBQ & BBQ shelter	1	\$ 14 000
bins, bike rack, bubbler/tap and seats		\$ 24 000
concrete slabs to shelters, picnic settings & seats	120m ²	\$ 12 000
reserve signs at entries	2	\$ 2 400
dog off leash area (fence, bubbler, bin)		\$ 14 000
Playground		
play equipment + nature play		\$ 90 000
1/2 basketball court		\$ 8 000
softfall (rubber)	200m ²	\$ 30 500
subsoil drainage to playground		\$ 4 000
decomposed granite bike trail for children	150m ³	\$ 10 500
garden and softfall edging	80m	\$ 2 400
Planting & Turf		
new tree planting	30	\$ 1 500
garden areas	200m ³	\$ 7 000
mulch to retained trees	680m ³	\$ 5 000
new turf	400m ³	\$ 4 000
Community Garden (community funded)		
raised gardens, deco paths, orchard, shed, fence		\$ 30 000
restricted access to garden (reinforced turf)		\$ 15 000
Exercise Stations		
exercise stations + shade sail		\$ 34 000
TOTAL		\$ 485 800

Note: This estimation of costs excludes the cost of the grassed detention basin, on street parking and the concrete path on the northern side of Hutley Drive. It is assumed these works would be part of the works associated with the extension of Hutley Drive.

Note: Estimation of costs in relation to the community garden are indicative only. Costs would be expected to be met by the community group establishing a community garden facility.

Proposed Staging

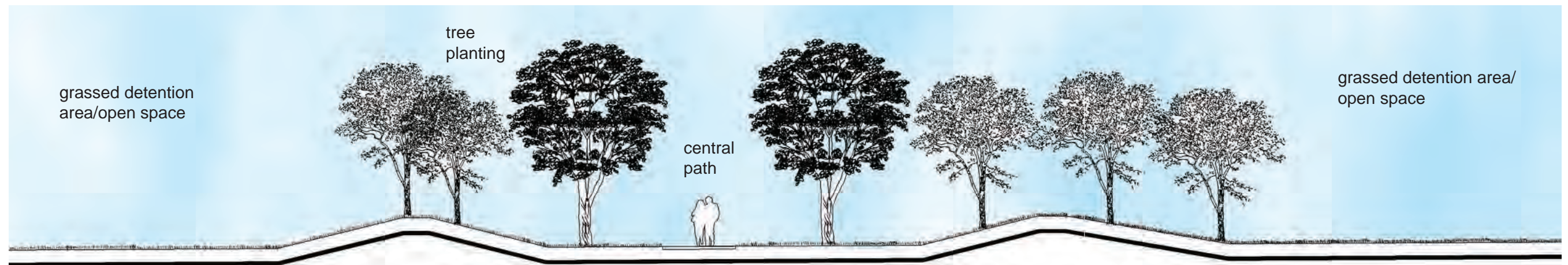


	Stage One <ul style="list-style-type: none"> • on street parking • concrete path on northern side of Hutley Drive • grassed stormwater detention area/open space 	part of Hutley Drive extension works
	Stage Two <ul style="list-style-type: none"> • site establishment • tree removal and under pruning • mulching to retained trees • central concrete path • toilet block 	\$ 110 000
	Stage Three <ul style="list-style-type: none"> • access to community garden • raised vegetable gardens • community orchard • deco paths • storage shed + compost areas • fence to garden 	\$ 45 000
	Stage Four <ul style="list-style-type: none"> • playground including subsoil drainage and softfall • nature play and trike trail • picnic shelters, park furniture, signage and slabs to furniture • new tree planting, gardens and turf • exposed aggregate path (1.2m wide) 	\$ 254 800
	Stage Five <ul style="list-style-type: none"> • exercise stations + shade sail • half basketball court • large shelter for group gatherings • fenced dog off leash area 	\$ 76 000
	TOTAL	\$ 485 800

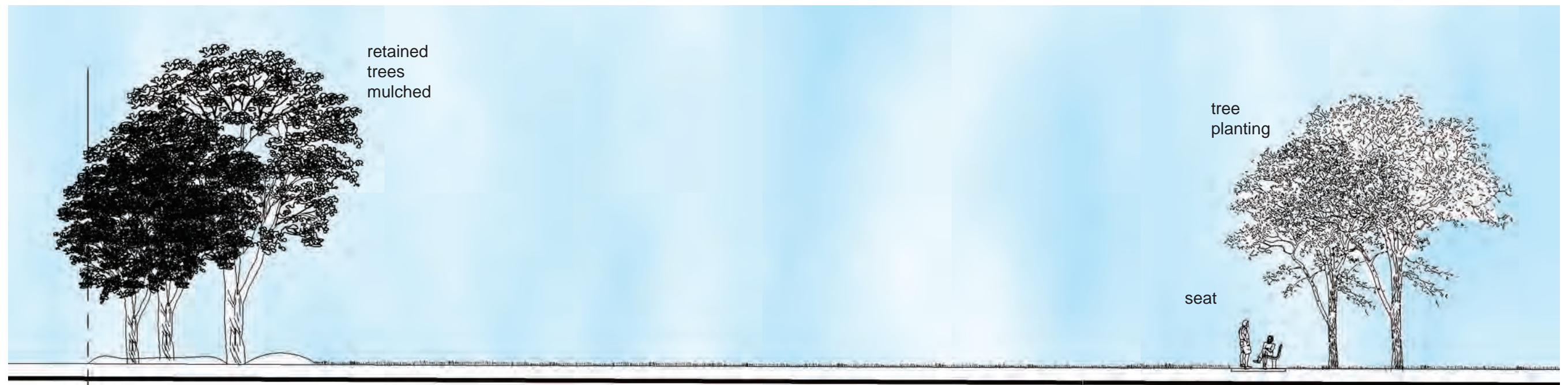


LEGEND

- existing tree removed
- existing tree retained
- tall shade trees
- tree planting to basin
- seating
- 2.5m path/cycle way
- picnic facilities
- ① reserve entry with grassed open space for visibility
- ② central pathway & connection to Hutley Drive
- ③ 2 x grassed stormwater detention area/ open space
- ④ gardens with indigenous plants
- ⑤ shade trees allowing views into park
- ⑥ on street parking
- ⑦ 2.5m path to Hutley Drive



Concept Three Cross Section
Central Path, grassed detention areas and shade tree planting



Concept Three Cross Section
Retained trees, grassed open space, seat and new shade trees

CONCEPT THREE - RATIONALE

Hutley Drive Extension

Concept Three again reflects and integrates future planning for the Hutley Drive extension including the requirements for a stormwater detention area. This concept locates two detention areas adjacent to Hutley Drive. These basins achieve the required extent of area, however, allow the retention of more open space across the northern extent of the reserve. Areas of the detention areas could be planted with trees and pockets of indigenous planting so that, whilst the areas served their function for stormwater detention in wet periods, they functioned as part of the reserve’s open green space.

Concept Three also suggests, that as part of the planning for the Hutley Drive extension, consideration be given to on street parking and a concrete path along the northern side of Hutley Drive. This will provide easy access from parking to the reserve’s southern entry. Informal tree planting along the edge of the reserve and the detention areas would maintain views into the reserve, whilst adding to the amenity of the open space and Hutley Drive.

Connections

Concept Three formalises existing walking routes through the reserve from Ocean Breeze Drive to Hutley Drive and from Hutley Drive to North Coast Road. A 2.5m path provides access through the reserve from Ocean Breeze Drive to Hutley Drive. Again vegetation is removed at the reserve’s northern entry to allow clear views into the reserve. Tree planting could be provided along the path for shade and amenity.

Facilities

Concept Three focuses on retaining the open space of the reserve and providing minimal new facilities. The reserve is predominantly open grassed areas with some new seating and picnic facilities. New tree planting around the edge of the reserve would provide shade and add to the reserve’s amenity. These trees would be selected for their capacity to allow views into the park. The stormwater detention areas would be integrated into the open grassed space with pockets of indigenous planting and tree planting.

Character

Concept Three proposes a reserve with limited facilities and a focus on green open space. The existing vegetation and new planting would be rationalised and integrated so that the reserve was a balance between open grassed areas, shade trees and pockets of vegetation. Seats and picnic facilities would be sited to take in attractive views in shaded locations.

Vegetation

Concept Three recommends the removal of some existing trees due to their proximity to services, being an inappropriate species or to enhance particular functions of the reserve. It is proposed the understory to retained trees be tidied up and mulched to contribute to the reserve’s useability and amenity. New tree planting would focus on using local indigenous species. There could be some limited pockets of planting around the detention area and again this would utilise indigenous shrubs and groundcovers.

Maintenance

The engineer designed detention areas will assist in managing stormwater at the reserve. Tidying up exotic garden waste and removing under story planting around the retained trees will assist in easier mowing of the reserve and may remove the potential for mosquito breeding. Species selection should focus on using reliable indigenous species. The reserve would become a combination of grassed open space, mulched tree groups and shade tree planting. Appropriate design and placement of these landscape elements should contribute to easier mowing of the reserve and long term maintenance.



central path providing link to Hutley Drive



grassed detention areas and open space



open space for informal play



tree planting at reserve edge



seats and new shade tree planting



picnic facilities



native planting

Anticipated Costs

PROPOSED ITEM	QUANTITY	ANTICIPATED COST
Preparation & Site Establishment		
site establishment for construction site		\$ 1 000
tree removal & underpruning of retained trees		\$ 3 500
Infrastructure		
central concrete pathway (2.5m wide)	400m ²	\$ 44 000
picnic settings + concrete slab	1	\$ 4 000
seats + concrete slab	3	\$ 10 000
reserve signs at entries	2	\$ 2 400
Planting & Turf		
new tree planting	50	\$ 3 500
garden areas	200m ³	\$ 7 000
mulch to retained trees	680m ³	\$ 5 000
new turf	200m ³	\$ 2 000
TOTAL		\$ 82 400

Note: This estimation of costs excludes the cost of the grassed detention basin, on street parking and the concrete path on the northern side of Hutley Drive. It is assumed these works would be part of the works associated with the extension of Hutley Drive.

Proposed Staging



	Stage One <ul style="list-style-type: none">• on street parking• concrete path on northern side of Hutley Drive• grassed stormwater detention area/open space	part of Hutley Drive extension works
	Stage Two <ul style="list-style-type: none">• site establishment• tree removal and under pruning• mulching to retained trees• central concrete path• park furniture (picnic setting & 3 x seats)• new tree planting, gardens and turf	\$ 82 400
	TOTAL	\$ 82 400

APPENDIX A

COMMUNITY CONSULTATION PHASE 1 FLYER AND SURVEY



Dear Resident

Ballina Shire Council is preparing a Master Plan for the Ocean Breeze Reserve in Lennox Head. This reserve is on public land owned by Council. This project is known as the **Ocean Breeze Reserve Master Plan** and the purpose of the Master Plan is to guide future use of the site.

Council is now seeking community feedback and invites you to complete the survey via the URL link below or Council's website (search Ocean Breeze). This survey will assist Council in understanding the community's aspirations for this reserve.

If you would like to receive further information on the Master Plan project, there is an option at the end of the survey to provide us with your email address.

www.surveymonkey.com/r/OceanBreezeReserve

This survey will be open until Monday 20 March 2017

[see over for map >>](#)



Further information:

Skye McNamara or Matthew Wood, ph 6686 1284.
skye.mcnamara@ballina.nsw.gov.au
ballina.nsw.gov.au (search ocean breeze)



Ocean Breeze Reserve Master Plan

Community Survey

Ballina Shire Council is preparing a Master Plan for the Ocean Breeze Reserve in Lennox Head. The reserve is public land owned by Council. This project is known as the **Ocean Breeze Reserve Master Plan**. The purpose of the Master Plan is to guide future use of Ocean Breeze Reserve.

Council is now seeking community feedback and invites you to complete this survey. This survey will assist Council in understanding the community's aspirations for this reserve and guide the master planning process for the Ocean Breeze Reserve site.

This community survey will be open until 20 March 2017.

If you would like to receive further information on the Master Plan project, there is an option at the end of the survey to provide us with your email address.

If you have any questions about either this survey or the master planning project, please contact Ballina Shire Council's Strategic and Community Facilities Group on telephone 6686 1284 or email skyem@ballina.nsw.gov.au

1. What is your proximity to Ocean Breeze Reserve?

* 2. Do you currently use Ocean Breeze Reserve?

- ☐ Yes, frequently (once a week or more).
- ☐ Yes, occasionally.
- ☐ No

If not, why not?

3. How do you currently use Ocean Breeze Reserve?

4. What are the things that you like most about the reserve at present?

5. What, if anything, do you dislike about the reserve at present?

6. Please indicate how desirable the following possible features are for the reserve?

	1 - Highly undesirable	2 - Undesirable	3 - Neutral	4 - Desirable	5 - Highly desirable
BBQ and picnic facilities	<input type="radio"/>	<input type="radio"/>	<input type="radio"/>	<input type="radio"/>	<input type="radio"/>
Dog exercise area	<input type="radio"/>	<input type="radio"/>	<input type="radio"/>	<input type="radio"/>	<input type="radio"/>
Play equipment	<input type="radio"/>	<input type="radio"/>	<input type="radio"/>	<input type="radio"/>	<input type="radio"/>
Passive open space	<input type="radio"/>	<input type="radio"/>	<input type="radio"/>	<input type="radio"/>	<input type="radio"/>
Sports equipment/fields/courts	<input type="radio"/>	<input type="radio"/>	<input type="radio"/>	<input type="radio"/>	<input type="radio"/>
Exercise stations	<input type="radio"/>	<input type="radio"/>	<input type="radio"/>	<input type="radio"/>	<input type="radio"/>
Community food garden	<input type="radio"/>	<input type="radio"/>	<input type="radio"/>	<input type="radio"/>	<input type="radio"/>
Ornamental gardens	<input type="radio"/>	<input type="radio"/>	<input type="radio"/>	<input type="radio"/>	<input type="radio"/>
Vehicle parking	<input type="radio"/>	<input type="radio"/>	<input type="radio"/>	<input type="radio"/>	<input type="radio"/>
Bike parking	<input type="radio"/>	<input type="radio"/>	<input type="radio"/>	<input type="radio"/>	<input type="radio"/>
Walking paths	<input type="radio"/>	<input type="radio"/>	<input type="radio"/>	<input type="radio"/>	<input type="radio"/>
Cycling paths	<input type="radio"/>	<input type="radio"/>	<input type="radio"/>	<input type="radio"/>	<input type="radio"/>
BMX track	<input type="radio"/>	<input type="radio"/>	<input type="radio"/>	<input type="radio"/>	<input type="radio"/>
Skate boarding infrastructure	<input type="radio"/>	<input type="radio"/>	<input type="radio"/>	<input type="radio"/>	<input type="radio"/>
Facilities for older community members	<input type="radio"/>	<input type="radio"/>	<input type="radio"/>	<input type="radio"/>	<input type="radio"/>
Facilities for younger children	<input type="radio"/>	<input type="radio"/>	<input type="radio"/>	<input type="radio"/>	<input type="radio"/>
Facilities for older children	<input type="radio"/>	<input type="radio"/>	<input type="radio"/>	<input type="radio"/>	<input type="radio"/>

Are there other facilities or improvements that you think are useful or desirable? Please tell us what they are:

7. How might changes in the reserve to provide additional facilities affect you?

- ☐ I don't think it will affect me
- ☐ Increase traffic in the local area
- ☐ Create parking issues close to my house
- ☐ Provide additional recreational opportunities (e.g., picnic/ play equipment etc)
- ☐ Increase noise around where I live
- ☐ Have a negative impact on my amenity / views
- ☐ Have a positive impact on my amenity / views
- ☐ Increase the value of my property
- ☐ Decrease the value of my property

Other (please outline)

8. Any other comments or suggestions? Please tell us!

* 9. Would you like to keep in touch with the progress of the Ocean Breeze Master Plan Project?

- ☐ No
- ☐ Yes

10. If Yes, please include your name/organisation and email below