



Ballina Shire Council

Play Equipment Installation Program

New Installations and Upgrading of Play Equipment



Adopted by Council 23 August 2007

Table of Contents

	Page No.
Introduction	3
Planning for Parks	3
Local Parks.....	4
District Park	5
Regional Park	5
Open Space Inventory	5
Identification and Prioritising of Parks for Embellishment	6
Summary	6
Appendix 1: Parks or Reserves with Play Equipment	8
Appendix 2 Parks or Reserves without Play Equipment.....	10
Appendix 3 Maps of Park Locations	11
Appendix 4 Parks Identified for Embellishment & Priority.....	16

Introduction

Ballina Shire has, at July 2007, 45 parks that have play equipment installed in the parks. The type of play equipment ranges from a set of swings to larger sets of equipment. There are also a number of parks that have no play equipment.

Since 2002 all of the old style sets of play equipment have been removed from parks in the Shire. This equipment was predominantly made from CCA Treated Pine, more commonly known as Koppers Logs as well as equipment made from galvanised pipe.

The equipment did not meet the required Australian Standards and the Koppers Logs equipment was in poor physical condition with splitting, splinters and exposed nails. The equipment made from galvanised piping was rusted and in many cases was close to failure.

The removal of this equipment made a significant impact on the available play equipment in the Shire however the quality of this equipment both in terms of its safety and play value was considered to be very poor.

Prior to 2002 some installations of contemporary play equipment had been made and generally this equipment was more likely to comply with Australian Standards, although not entirely, and the equipment has improved play value. This equipment however is often poorly serviced by softfall that meets the required Australian Standards.

Following the removal of the old play equipment, there has been a program of upgrading softfall using recycled rubber product and by constructing appropriate retaining edges where bark chip is used for soft fall. This upgrading commenced with the high profile parks such as Missingham Park.

This work needs to continue in addition to the installation of new play equipment as there are still many parks with inadequate softfall under the play equipment.

Council often receives requests from the public for the upgrading or installation of new play equipment in a park. Currently there is no documented program for the installation of new equipment and the upgrading of old equipment. This makes it difficult to provide a meaningful response to such enquiries in regard to priority.

Planning for Parks

In February 2004 Council received the "Community Facilities and Open space Needs Analysis Planning Study" that was prepared for Council by a consultant, Environmental Resources Management Australia (ERM).

The report included an assessment of the current open space availability, along with the current location and distribution of parks in the Shire.

The report also developed criteria for the location, size and embellishment requirements of parks.

The report made reference to the proliferation of small local parks, many having no facilities and located in close proximity to other parks. These create a maintenance issue for Council and the community, with the benefits of many of the facilities being questionable. The report recommended that Council consider the sale of some small local parks and use of the proceeds toward the embellishment of designated parks in accordance with the strategy.

The ERM report recommended a hierarchy of park categories. This hierarchical system forms the basis for determining the distribution of parks and the level of embellishment of these parks.

The hierarchy recommended was:

- Local Parks
- District Parks
- Regional Parks

Local and district parks generally serve the immediate community in which they are located. While regional parks serve the whole of the Shire and would be destinations for tourists.

Local Parks

Local parks were defined as small reserves that provide for residents within immediately adjacent areas. They are largely areas for informal pursuits including play equipment and open play areas. These are usually within walking distance of residences and a nominal 500 metre radius is considered the catchment area of a local park.

The level of embellishment for a local park was recommended as having some or all of the following facilities:

- Seating
- A small set of Play equipment with rubber softfall
- Shade structure over equipment
- Shade trees, and
- Paths

District Park

District parks are larger reserves that may include picnic or social/recreational facilities. Generally the play equipment would be a larger installation than installed in a local park and the size of the park would be larger.

District parks provide for groups of suburbs, or whole villages, and generally require people to access them by cars.

The level of embellishment for a district park was recommended as having some or all of the following facilities:

- Seating
- Play equipment with rubber softfall
- Shade structure over equipment
- Shade trees
- Paths
- Sealed parking
- Toilets and amenities, and
- BBQ facilities

Regional Park

A regional park is defined by its ability to attract park users from across the Shire, from surrounding Shires as well as tourists. Regional parks may be the venue for special events such as community events, Carols by Candle Light or Skate Competitions.

It is recognised that the character of a regional park will vary, ie a facility could be substantial in size and standard (Missingham Park), or it could be smaller facility that draws from a wide catchment due to the uniqueness of the park (Fawcett Park).

Open Space Inventory

An inspection of all the play equipment in the Shire was completed in July 2007 and documented in a report, "Playground Inspections 2007".

This report provides a description of all the play equipment in the Shire along with photos. It details the inspection carried out on the equipment and the result of the inspection with recommendations for maintenance required, alterations required and for removals when required.

Refer to document "Playground Inspections 2007".

A list of all parks or reserves in the Shire that contain play equipment is provided in Appendix 1. The equipment provided in these parks or reserves varies from a set of gal pipe swing to more complex and more modern play equipment.

A list of parks or reserves that do not have any play equipment along with comments on the suitability of the park for the installation of play equipment is provided in Appendix 1.

Identification and Prioritising of Parks for Embellishment

The purpose of identifying parks for embellishment provides the community with knowledge of what they can expect to be provided in their area and the level of embellishment. It also provides Council with the ability to plan for the embellishment of these parks in terms of funding new installations, replacement installations and upgrading of installations. It also provides the opportunity to prioritise the works program that will provide the community with information on what to expect and allow for budgetary allocations to be made.

The prioritising of parks in the program is based on the existing play equipment that is available in an area, the demography of an area and requests from residents.

Maps showing the parks that have been identified as the parks that will be embellished to provide the required coverage of appropriately embellished parks are provided in Appendix 2.

A table listing these parks with the works required in the park, hierarchy of the park and the priority given for the works in each park on an area basis and Shire basis is provided in Appendix 3.

There will be parks that do not have play equipment and parks that have play equipment that will not be replaced.

Summary

Parks have been identified for embellishment based on the hierarchy recommended in the ERM report "Community Facilities and Open Space Needs Analysis - Planning Studies" February 2004. The standards of provision of parks used are based on accepted standards for the provision of open space and are in line with the practices of other Local Government areas.

The provision of the nominated parks, appropriately embellished will provide the community of Ballina Shire with the required number and standard of parks to enable the community to easily access parks with safe and interesting play equipment and other facilities.

The parks have been prioritised providing an order of works that is based on providing play equipment in areas of greatest need first.

The report also advises that there also needs to be an ongoing program for the installation of softfall that meets the required standards.

The subject of funding was discussed and the option to investigate the sale of parks that are unsuitable for play equipment and/or are surplus to need was recommended.

Appendix 1: Parks or Reserves with Play Equipment

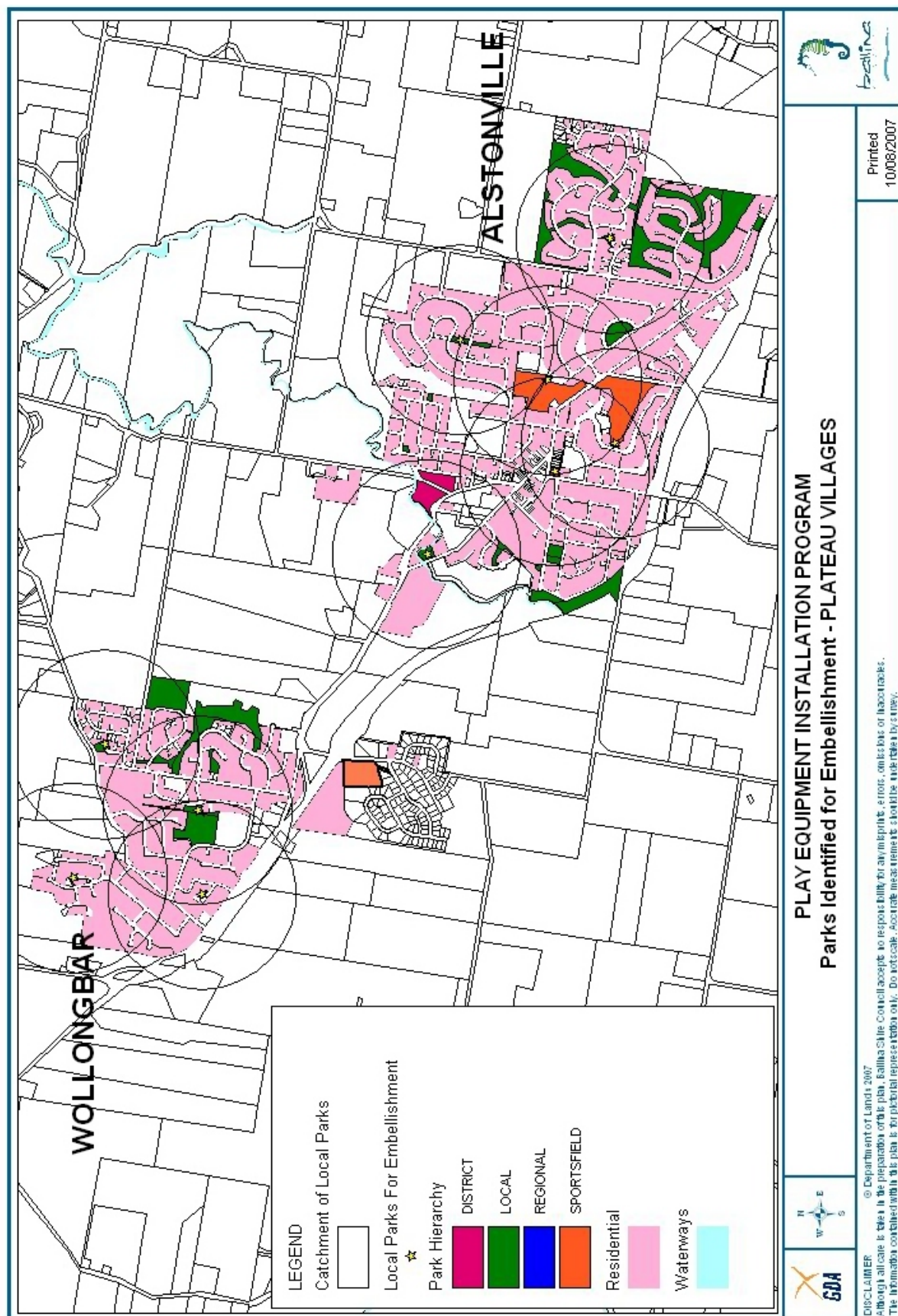
Park	Location	Comments	Park Hierarchy
BALLINA ISLAND			
Cawarra Park	Cawarra St	swings only	Local
Commemoration Park	Bentick St	Has New rubber softfall	District
Fawcett Park	Fawcett Lane	Has New equipment	Regional
Meldrum Park	northern end of Norton St	Has New equipment	Local
Missingham Park	Missingham Bridge	Has New rubber softfall, shade structure	Regional
North Lakes Reserve	North Creek Road	Poor condition	Local
Riverview Park	river end of Brunswick St	swings only	Local
Treelands Park	Bangalow Rd	swings only	Local
Vera St Reserve	end of Clavan Court	Poor condition	Local
Wigmore Park	Swift St	swings only	Local
Edgewater Cove	Edgewater Cove	Has New equipment	Local
EAST BALLINA			
Atrim St Reserve	Atrim St (near prospect lake)	swings only	Local
Jabiru Reserve	Jabiru PI & Sea Swallow		Local
Jan Moon Reserve	Prospect St	swings only	Local
McDougall Reserve	McDougall St	swings only	Local
Pop Denison Park	Compton Dr (Shaws Bay)	Has New rubber softfall	District
Prospect Lake Reserve	Links Ave	swings only	Local
Shearwater Reserve	Shearwater Close		Local
SS Rainbow Park	McKinnon Pde	swings only	Local
WEST BALLINA			
Weerama Park	Riverview Ave	Poor condition	Local
Westlands Reserve	Westland Ave / Sunset Ave	Very poor condition	Local
LENNOX HEAD			
Headlands Dr Reserve	Skennars Head	Has New bark softfall and edging	Local
Lakefield Ave Reserve	Lakefield Ave	Has New bark softfall and edging	Local
Lennox Meadows	Silkwood Rd		Local
Lions Park	Allens Pde	swings only	Local
Ross Park	Ballina St near shops		District
Victor PI Reserve	Victor Place	Very Poor condition	Local
Megan Cres Reserve	Sports fields & Off Alison Ave		Local
Montwood Park	Montwood Drive		Local
Lilly Pilly Reserve	Lilly Pilly Place		Local
ALSTONVILLE			
Apex Park	Alston Ave	Has New rubber softfall	Local
Bullwinkle Park	Lismore end of Main S	Has New equipment	Local
Elizabeth Brown Park	Corner Daley St & Wardell Rd	Poor condition	District
Geoff Watt Oval	Cooke Ave	Has New rubber softfall	Local
Tanamera Dr Reserve	Tanamera Dr	Swing only	Local
Alabaster Park	Alabaster PI	Has New equipment	Local

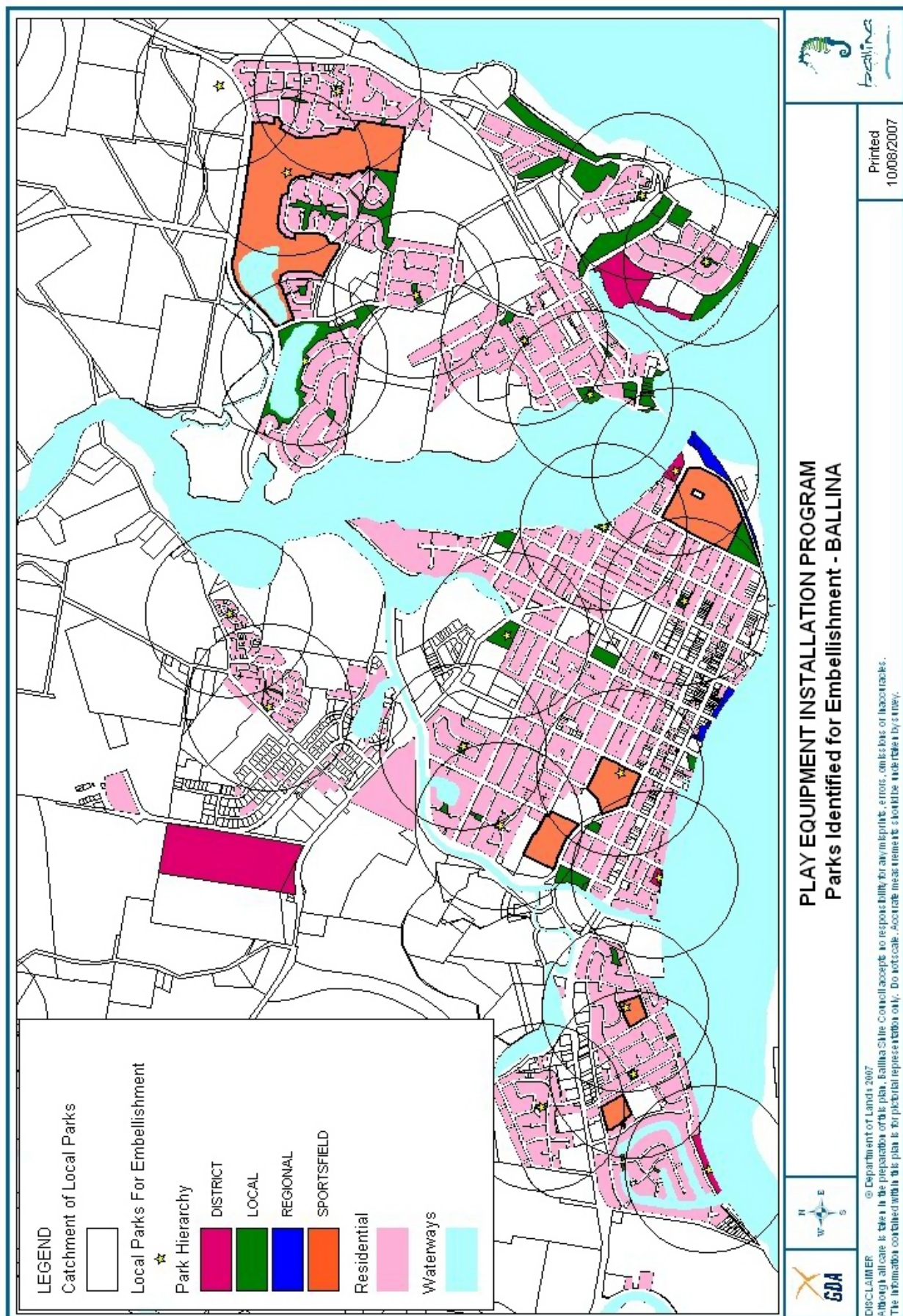
Park	Location	Comments	Park Hierarchy
WOLLONGBAR			
Campbell Ave Res	Campbell Ave		Local
Central Park Reserve	Central Drive	Has New rubber softfall	Local
Hill Pk Oval	Simpson Ave	Swing only	Local
Rubiton St Reserve	Rubiton St	Has New rubber softfall	Local
Killarney Park	Cornwell Place	Has New Equipment	Local
WARDELL			
Fitzroy St Reserve	Near Post Office	Fair condition	District
Lindsay Cres Reserve	Western Wardell	Poor condition	Local
CUMBALUM			
Cummings Cres Reserve	Not handed to Council yet	Has New Equipment	Local
Madden Place Reserve	Not handed to Council yet	Has New Equipment	Local

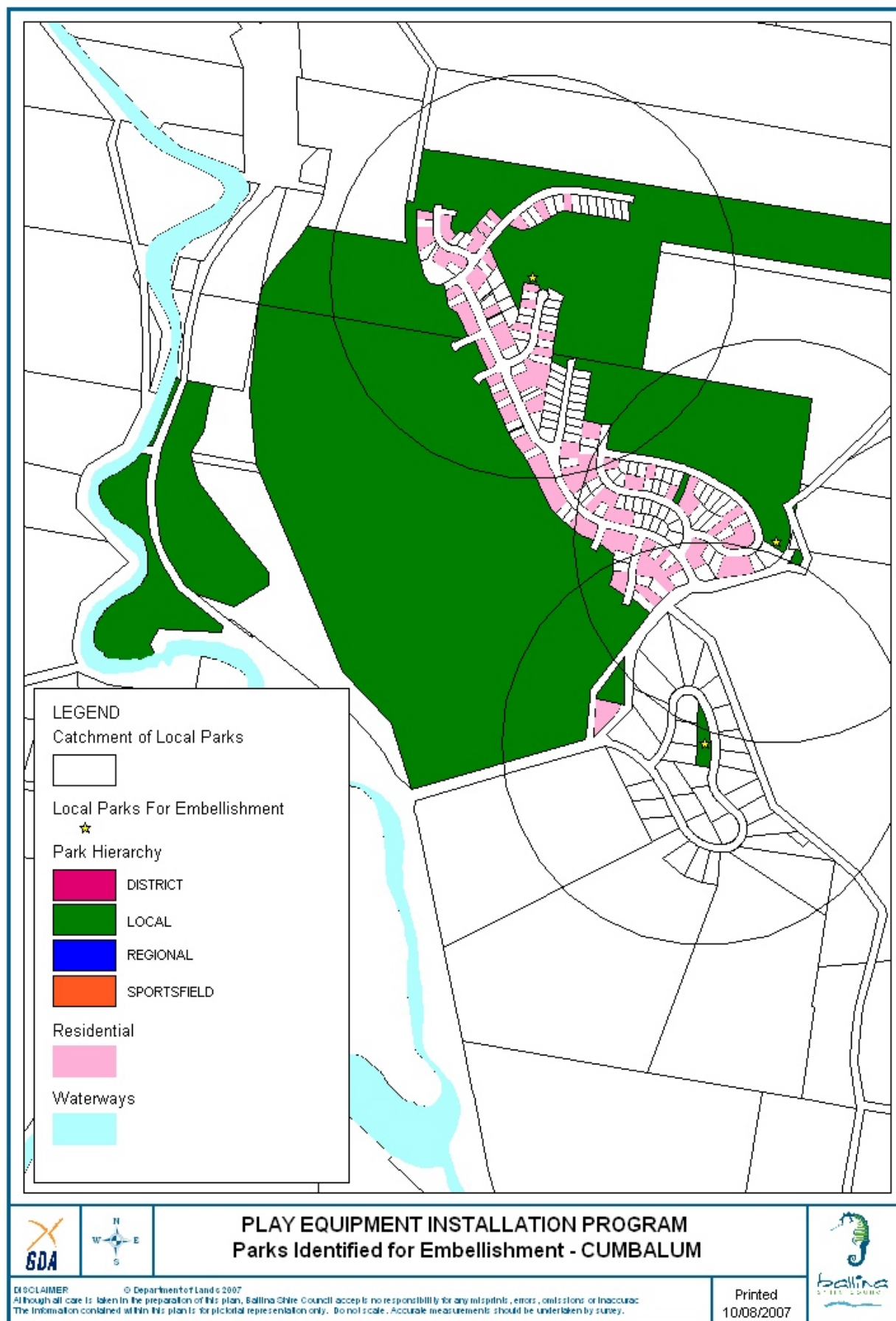
Appendix 2 Parks or Reserves without Play Equipment

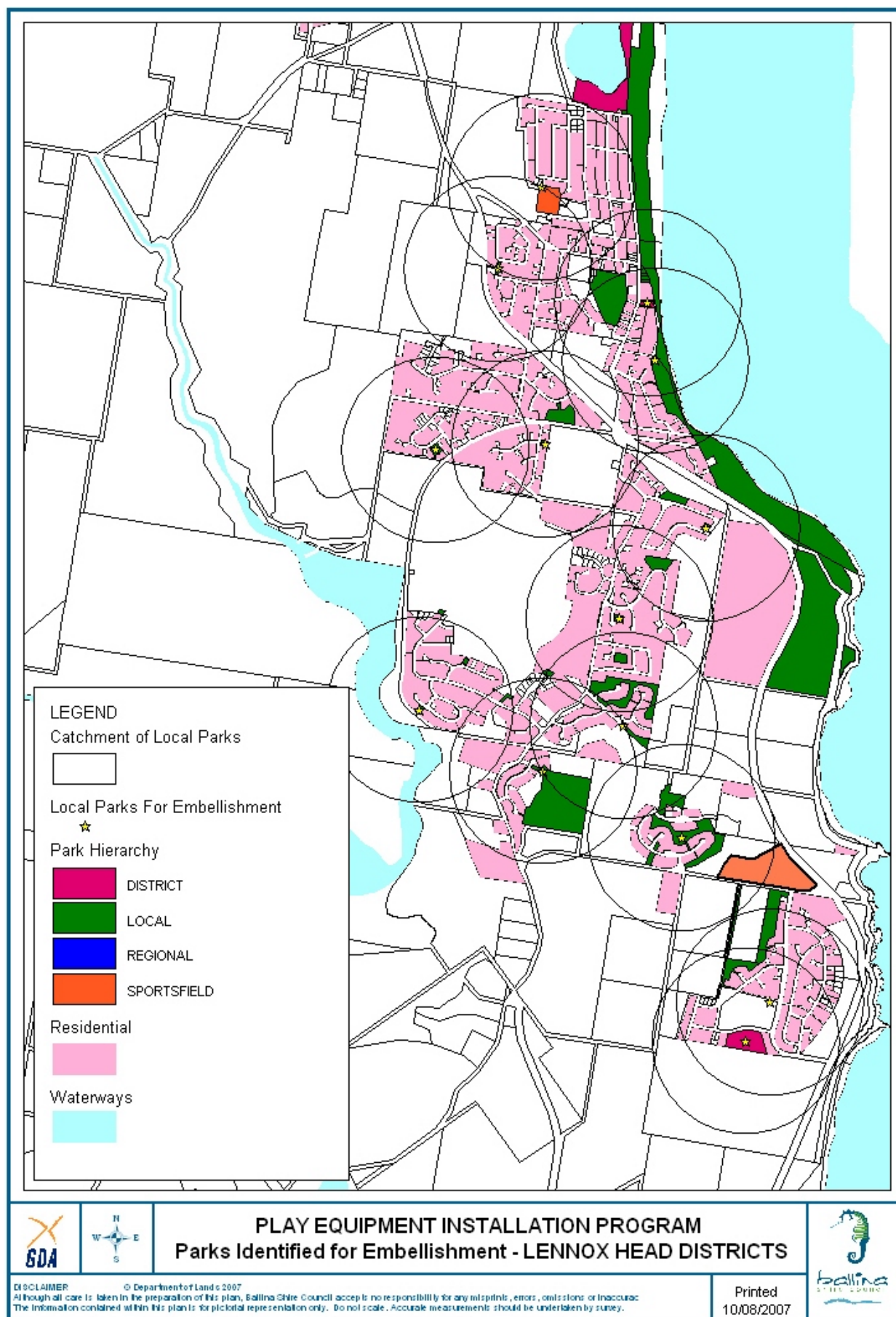
Park	Location	Comments	Park Hierarchy
BALLINA ISLAND			
Catherine Cres Park	Catherine Cres	Equipment required	Local
Fox St Reserve	Fox and Clavan Streets	Close to existing equipment at Vera Park	Local
Saunders Ovals	Kerr St	Equipment required	District
EAST BALLINA			
Serpentine Park	The Serpentine	Equipment required	local
Lakeview Circuit Reserve	Lakeview Circuit	Equipment required	Local
Chickiba Sports Fields	Chickiba Drive	Equipment required	Local
WEST BALLINA			
Faulks Reserve	Riverside Dr	Boat Ramp, has no equipment	District
Rainbow Ave Park	Rainbow Ave		Local
Porter Park	Daydream Ave		Local
Marge Porter Park	Marge Porter Place	Not suitable for equipment very isolated	Local
LENNOX HEAD			
Beryl Place Park	Beryl Place		Local
Ocean Breeze Reserve	Ocean Breeze Drive	Close to exiting equipment in Silkwood Dr. No equipment required	Local
Castle Drive Reserve	Castle Drive	Equipment required	Local
Tara Downs Park	Tara Downs	Equipment required	Local
Henderson Dr Reserve	Henderson Drive	Equipment required	Local
Spoonbill Reserve	Redford Drive	Equipment required	District
Lake Ainsworth	Lake Ainsworth		District
ALSTONVILLE			
Parkview Reserve	Parkview Circuit	No Equipment required	Local
Cawley Park	Coral St	Netball Courts, No Equipment required	Local
Lumley Park	Pearces Creek Road	Could accommodate equipment	District
Rossleigh Park	Albert St		Local
Freebourne Park	Adele St		Local
WOLLONGBAR			
		All parks have equipment	
WARDELL			
Walsh Park	River Dr	Isolated location, no equipment required	

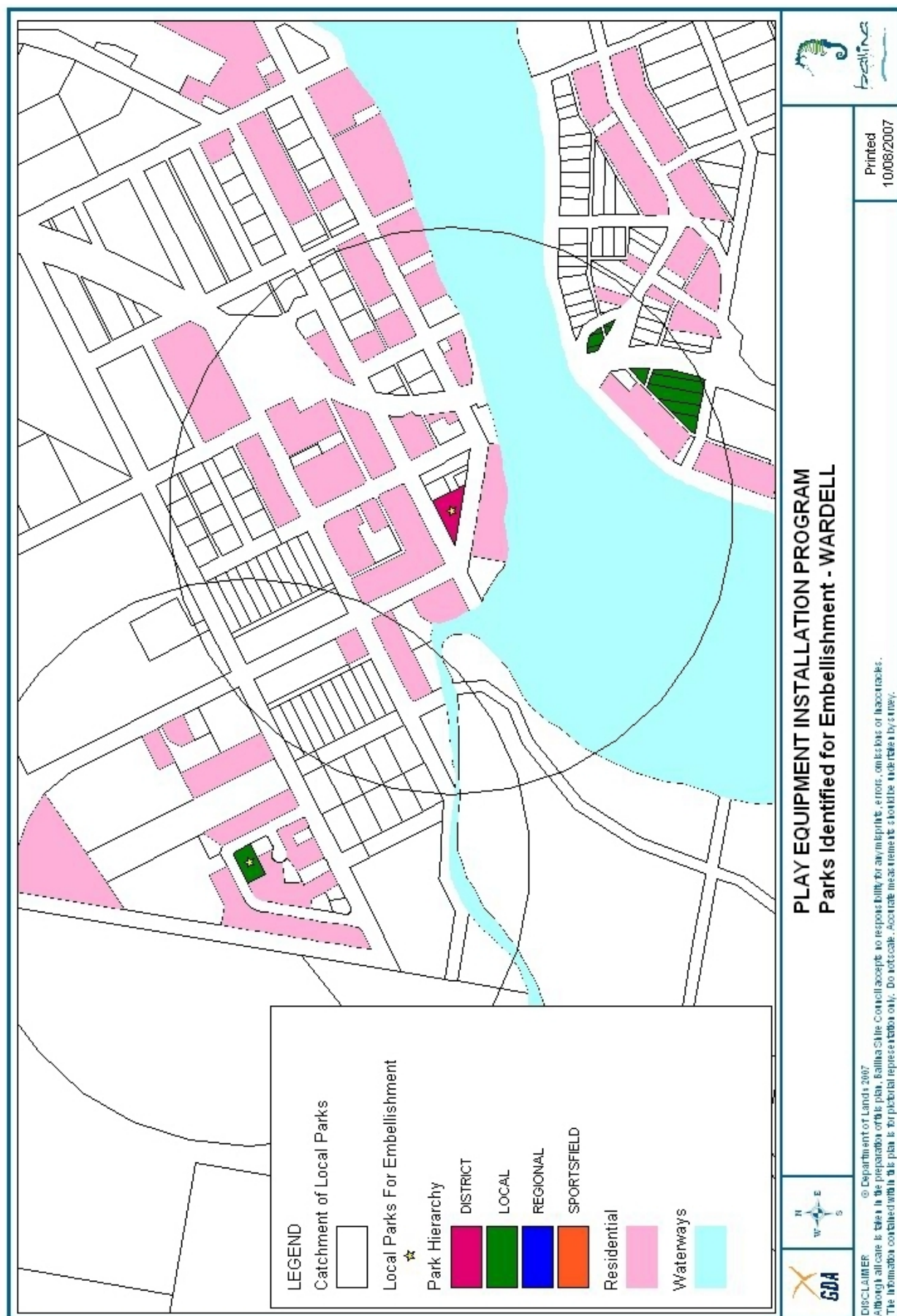
Appendix 3 Maps of Park Locations



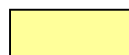








Appendix 4 Parks Identified for Embellishment & Priority



New Play Equipment Required



Softfall or Shade Required

Park	Location	Comments	Park Hierarchy	Works Priority By area	Works Priority By Shire
BALLINA ISLAND					
Missingham Park	Missingham Bridge	Additional Equipment desirable	Regional	low	
Commemoration Park	Bentick St	Shade required	District		
Bicentennial Park	Pacific Highway	No equipment picnic facilities only	District		
Saunders Ovals	Kerr St	Equipment required	District	4	15
Catherine Cres Park	Catherine Cres	Equipment required	Local	1	6
Meldrum Park	northern end of Norton St	Shade required	Local		
North Lakes Reserve	North Creek Road	Replacement Equipment	Local	3	14
Riverview Park	river end of Brunswick St	swings only New equipment	Local	6	24
Treelands Park	Bangalow Rd	swings only New equipment	Local	5	23
Vera St Reserve	end of Clavan Court	replacement equipment	Local	7	25
Wigmore Park	Swift St	swings only new equipment	Local	2	13
Edgewater Cove	Edgewater Cove	ok	Local		
EAST BALLINA					
Pop Denison Park	Compton Dr (Shaws Bay)	ok	District		
Prospect Lake Reserve	Links Ave	swings only new equipment	District	1	1
Chickiba Sports Fields	Chickiba Dr	New equipment	Local	2	7
Ballina Lighthouse	Beach Rd	New equipment	Local	8	
Jabiru Reserve	Jabiru PI & Sea Swallow	Improvements to Softfall	Local		
Jan Moon Reserve	Prospect St	swings only new equipment	Local	3	8
McDougall Reserve	McDougall St	swings only new equipment	Local	4	11
Shearwater Reserve	Shearwater Close	Improvements to softfall	Local		
SS Rainbow Park	McKinnon Pde	swings only small installation	Local	5	16
Serpentine Park	The Serpentine	Equipment required	Local	7	22

Park	Location	Comments	Park Hierarchy	Works Priority By area	Works Priority By Shire
WEST BALLINA					
Faulks Reserve	Riverside Dr	New Equipment	District	3	20
Weerama Park	Riverview Ave	Replacement equipment	Local	2	12
Westlands Reserve	Westland Ave / Sunset Ave	Replacement equipment	Local	1	2
Porter Park	Hayman St	New Equipment		4	21
LENNOX HEAD					
Lake Ainsworth	Lake Ainsworth	Picnic facilities	District		
Spoonbill Reserve	Redford Dr Skennars Head	New equipment	District	8	
Ross Park	Ballina St near shops	Ok	District		
Headlands Dr Reserve	Skennars Head	Ok	Local		
Lakefield Ave Reserve	Lakefield Ave	Ok	Local		
Lennox Meadows	Silkwood Rd	Softfall upgrade	Local		
Lions Park	Allens Pde	swings only new equipment	Local	6	17
Victor Pl Reserve	Victor Place	Replacement equipment	Local	1	3
Megan Cres Reserve	Sports fields & Off Alison Ave	Softfall upgrade	Local		
Montwood Park	Montwood Drive	Softfall upgrade	Local		
Beryl Place Park	Beryl Place	Equipment required	Local	4	
Castle Drive Reserve	Castle Drive	Equipment required	Local	2	10
Tara Downs Park	Tara Downs	Equipment required, small installation	Local	5	19
Henderson Dr Reserve	Henderson Drive	Equipment required	Local	3	18
Lilly Pilly Reserve	Lilly Pilly Place	Softfall upgrade	Local		
ALSTONVILLE					
Elizabeth Brown Park	Corner Daley St & Wardell Rd	New equipment	District	1	4
Lumley Park	Pearces Creek Road	Could accommodate equipment	District	4	
Apex Park	Alston Ave	Ok	Local		
Bullwinkle Park	Lismore end of Main S	Ok	Local		
Geoff Watt Oval	Cooke Ave	Ok	Local		
Tanamera Dr Reserve	Tanamera Dr	Swing only new equipment	Local	2	9
Alabaster Park	Alabaster Pl	Additional equipment desirable	Local	3	

Park	Location	Comments	Park Hierarchy	Works Priority By area	Works Priority By Shire
WOLLONGBAR					
Campbell Ave Res	Campbell Ave	Upgrade softfall	Local		
Central Park Reserve	Central Drive	Ok	Local		
Hill Pk Oval	Simpson Ave	Swing only New swing & softfall	Local		
Rubiton St Reserve	Rubiton St	Ok	Local		
Killarney Park	Cornwell Place	Ok	Local		
WARDELL					
Fitzroy St Reserve	Near Post Office	Upgrade softfall & equipment	District	1	5
Lindsay Cres Reserve	Western Wardell	Upgrade softfall	Local		
CUMBALUM					
Cummings Cres Reserve	Not handed to Council yet	Ok	Local		
Madden Place Reserve	Not handed to Council yet	Ok	Local		