



# community connect

the newsletter of ballina shire council

inside

pools  
proposal



rural  
character  
statements



ballina  
breath of  
fresh air



christmas  
hampers



## AUSTRALIA DAY SPECIAL GUEST: Leigh Sales

Ballina Shire Council is proud to announce that the guest speaker for this year's official ceremony will be award winning author and journalist, Leigh Sales.

Ms Sales is well known for her impressive media background and is quickly achieving a reputation as one of Australia's most respected journalists. Currently with the ABC and anchor for the current affairs and news program 7:30, Leigh has established herself as a formidable interviewer.

Ms. Sales said, "I'm looking forward to heading to Ballina for Australia Day and congratulating all the new Australians. It's a great time for us to reflect on the wonderful opportunities our nation offers and celebrate our diversity."

**The official ceremony will commence at 9am inside the Lennox Head Cultural and Community Centre**, with a full program including welcome to country by a Bundjalung elder, a special address by Leigh Sales, citizenship and award ceremonies. Council will be providing a free bus service, departing the Ballina Visitor Information Centre at 8.15am and returning from the Community Centre at 12.15pm.

There are 55 seats available on the low level, wheel chair accessible bus. Bookings are essential by contacting the Ballina Visitor Information Centre on free call 1800 777 666.

To find out more about what's happening this Australia Day, visit [ballina.nsw.gov.au](http://ballina.nsw.gov.au).

## Gabriel and Cecilia to perform at Australia Day

Local performers, siblings Gabriel and Cecilia Brandolini, fresh from their success on The Voice 2014, will be performing a selection of songs and the National Anthem at the Ballina Shire Australia Day Ceremony in Lennox Head.

*Banner image: Side Show Alley at the 2014 Ballina Prawn Festival (photo: Maria Butler)*







# contents



Australia Day Special Guest: Leigh Sales	1	Wigmore Arcade open for business	10
From the Mayor's Desk	2	Latest News from Ballina Byron Gateway Airport	11
Community survey results	3	Ballina...a breath of fresh air campaign	11
Council's Decision on Special Rate Variation for pools	4	Road projects	12
Planning for our future	6	Comment on how community land is managed	13
Developer contributions for infrastructure	6	Market calendar	13
Ballina Major Regional Centre Strategy	7	Community events	15
Ballina Twilight Market – Fawcett Park Ballina	7	Ballina RSL Memorial Park	15
Rural Settlement Character Statements	8	Now is the time to check your pool fence	16
Estuary Management Grants 2014–15	10	Beach patrols	16
Ballina Shire Council named Employer of the Year	10	Mythbusters	17
		Off-leash dog exercise areas	18
		Rangers to the rescue	18
		Pooches in public places	18
		Lake Ainsworth is a Dog Free Zone	19
		4WD's on Seven Mile Beach, Lennox Head	19
		Transform Art 2104	20
		Make your Mark – Workshops for young and old(er).	20
		People Poll	21
		Staff Profile	21
		Water Talk	22-23
		Waste Watch	24-25
		School holiday activities	26
		Community Spaces	28
		Arts Connect	30



## from the mayor's desk

*I would like to congratulate the organisers of both the Coastal Country Music Festival and the Ballina Prawn Festival on presenting outstanding events to the Ballina residents and many, many visitors from the local area and interstate.*

*The 'Brothers Three' kept their promise to return for a second year, even though it was days before the X Factor final. Their free Thursday night concert overwhelmed the Cherry Street Bowling Club. Many also enjoyed the free concert at the Amphitheatre, in fact the entire weekend was well attended with a wide variety of top rate musicians performing.*

*The huge success of the Prawn Festival showcased many local businesses who gave financial and in-kind support to present the best in entertainment, food, traffic and safety. Without their support the Ballina Chamber of Commerce and Industry would not be able to run such a successful event. Congratulations to all involved, particularly the organisers and many volunteers.*

*These festivals certainly make Ballina Shire Council's financial and staff support worth it. Council will again provide financial support to both festivals in 2015.*

*In recent years we have also been using an independent firm to measure the community's satisfaction with our services along with identifying items of importance. This information helps Councillors set priorities and allocate resources for future planning. It is pleasing to see that the latest results have shown increased community satisfaction levels with Council's performance. See the article on Page 3 for more information.*



## THE COMMUNITY IDENTIFIES ITS PRIORITIES AND SATISFACTION LEVELS

Since 2008 Ballina Shire Council has engaged Micromex Pty Ltd, to undertake community satisfaction surveys that assess the community's priorities and satisfaction in relation to services and facilities provided by Council. We also assess the community's overall satisfaction with Council's performance. The surveys are based on telephone calls to 500 residents, randomly selected from the White Pages. Those surveyed, represent the demographic profile of Ballina Shire.

Micromex provide this service for a large number of councils and based on a sample size of 500, the survey results have a high level of statistical accuracy. The collection of this information is very useful for Council as we are not like a private sector organisation that can assess its overall performance by the profit generated, but rather we need to understand how the community is responding and feeling about the services we provide.

The survey results which can be viewed at [ballina.nsw.gov.au/ourcommunityyourfuture](http://ballina.nsw.gov.au/ourcommunityyourfuture) show us that:

- The **top five ranked items of importance** to the community are roads, garbage collection, beaches and foreshores, the overall health of the Richmond River, and crime prevention and law and order. Roads have been ranked, first or second, as the most important item in all surveys undertaken by Council.
- The **top five ranked items in respect to satisfaction** are our libraries, the Ballina Byron Gateway Airport, water supply, garbage collection and the beaches and foreshores
- The **bottom five ranked items in respect to satisfaction** are affordable housing, public toilets, our management of development, youth services and roads. Despite the level ranking, these items still received moderate levels of satisfaction.

- 94% of people were satisfied or somewhat satisfied with Council's performance and 6% dissatisfied.
- The most valued aspects of living in Ballina Shire are the lifestyle, people, friendliness (21% of respondents), the natural environment (20%) and the coastline (15%).

The top eight goals that Council should be trying to achieve for the next ten years are:

TEN YEAR PRIORITIES	(%) OF RESPONDENTS
Development meets the needs of population growth	22
Roads and Infrastructure maintained	11
Council services and facilities maintained	10
Environmental Sustainability	10
Preserving local waterways and facilities	9
Improving services to all residents	8
Efficient financial management	7
Promoting tourism and leisure facilities	4

This survey is just one information tool available to Councillors to help in their decision making. The survey also guides how Ballina Shire Council will communicate actions and decisions made and implemented. Publications such as this Community Connect newsletter are a major component of our communication process.

Council has just installed a huge array of solar panels at the Ballina Waste Water Plant. The panels sit in lines on the ground like soldiers on parade. The 300kw system, which will help power the plant during daylight hours, features 1,200 panels making it one of the largest owned by a council in the State. The panels will help defray power costs to run the state of the art facility. An open day will be held shortly to allow residents to tour the plant.

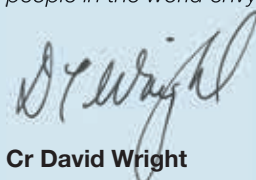
In this edition you will also read about the recently constructed \$12.5 million federally funded fire station at the Ballina-Byron Gateway Airport. In addition to providing an emergency response at the airport, the officers can attend fires outside the airport precinct. Airport numbers are also swelling with extra flights to and from Melbourne running at near capacity. Hopefully the new parking area will be finished soon, to better cater for the expected 500,000 passengers that are predicted to use the airport in 2015.

Councillors often have very difficult decisions to make and they need to balance community views to provide infrastructure and services to meet

the ever-growing expectations of residents. Decisions on matters such as the rate rise for the pools upgrade and what to do with the large NBN towers to deliver broadband services to the rural areas often split the community with those who want the service and those who do not, making the role of Councillors challenging at times.

By the time you are reading this much of the Wigmore Arcade will be significantly refurbished and shoppers will be able to enjoy the enhanced ambience for the Christmas / New Year trading period.

Finally, I wish everyone a happy and safe Christmas period. Please take care in the water and protect yourself and family while outside in the sun. We live in a fantastic country and a beautiful area that most other people in the world envy.

  
Cr David Wright



## COUNCIL DECISION ON SPECIAL RATE VARIATION POOLS PROPOSAL

Council at its November 2014 meeting reviewed the submissions received from the community in respect to the possible special rate variation to raise additional funds to upgrade the Ballina and Alstonville swimming pools. Council subsequently resolved to apply to the NSW State Government for a special rate variation of 5.41% in 2015/16 and 5.34% in 2016/17. This represents a slightly smaller increase than the 5.5% proposed for both years as part of the consultation process. If approved by the Independent Pricing and Regulatory Tribunal (IPART) on behalf of the State Government, this increase will provide a permanent increase to Council's total rate income.

This increase will finance approximately \$8m worth of swimming pool upgrades (approximately \$4m per pool). Works will be funded by loans, with the repayments for an \$8m loan financed by the additional rate income.

Council received over 2,000 submissions during the consultation period, with 72% not supporting any rate increase and 28% supporting a lower increase or the full increase. In addition to this the Micromex community survey (see page 3 of this edition) provided 500 responses to this proposal with 60% supportive or somewhat supportive of the proposed rate increase and 40% against.

*A complete copy of the report to Council on the consultation process is available on our website under Quick Links – Minutes and Agendas – 27 November 2014 Agenda – Refer to item 10.11.*

It is important to acknowledge that any consultation process undertaken by Council is not a matter of Council making a decision based on the highest number of submissions. Rather the elected Councillors must make a final decision on what they believe is the 'right' decision after viewing all the submissions received.

The submissions supportive of the rate increase recognised the importance of the swimming pools and were looking forward to improved facilities at the pools.

The submissions opposing the rate increase presented the following key themes:

**a) Council should have been putting money away for these works.**

Council agrees with those sentiments, however our overall income base is not sufficient to set aside this amount each year.

Also the proposed works are significant upgrades to the existing facilities and not just maintenance works. Maintenance is always undertaken at the pools but we are now proposing upgrades to meet future user needs.

**b) The pools should be user pays.**

Public swimming pools operate at a significant loss which is why the private sector does not provide these facilities. For the pools to be user pays the existing fees would need to be more than doubled, which would make the pools unaffordable for users.

**c) It is unfair to charge all ratepayers for this upgrade.**

Council land rates fund a wide range of facilities such as roads, libraries, sports fields, playgrounds, street lighting, cycleways etc. It is not possible for ratepayers to pay directly for services they use. If Council does not raise extra funds for pool improvements, funding for other services will be reduced, which may have a direct impact on users of those services.

**d) Council does not have a firm program of works.**

Council has a preliminary program of works and part of this consultation process was to obtain feedback on what the community would like to see as part of the pool upgrades. That information will help confirm the works programs, if the special rate variation is approved by the NSW State Government.

**e) Affordability.**

Council appreciates everyone's concerns with affordability and we continue to try and ensure that the rates and charges in the Ballina Shire remain affordable, especially in comparison to other councils. The following two tables demonstrate our overall level of affordability compared to our neighbouring councils.







**TABLE ONE: AVERAGE RESIDENTIAL RATES AND CHARGES FOR 2014/15**

RESIDENTIAL PROPERTY	BALLINA (\$)	BYRON (\$)	COFFS HARBOUR (\$)	LISMORE (\$)	RICHMOND VALLEY (\$)	TWEED (\$)
Ordinary Rates (Land Rates)	859	1,077	1,006	1,134	785	1,277
Stormwater Charge	25	25	25	25	25	25
Water Access Charge	194	155	143	203	127	148
Water Consumption Charge (based on 200 kilolites PA)	416	464	526	598	388	490
Waste Water Charge (Sewer)	807	1,126	803	772	896	732
Domestic Waste Charges	422	397	566	460	380	405
<b>TOTAL</b>	<b>2,723</b>	<b>3,244</b>	<b>3,069</b>	<b>3,192</b>	<b>2,601</b>	<b>3,077</b>

Table One shows the total rates and charges levied by councils for 2014/15 for the average residential property. The total average bill in 2014/15 for the Ballina Shire was second lowest with Richmond Valley Council being the lowest. Richmond Valley received State Government approval for a 12.5% ordinary rate increase for 2014/15, with another 5.5% in increases approved for the next four years.

Revenue raised from Ordinary Rates can be spent on any Council service, but revenue from all the other charges such as stormwater, water, sewer, waste can only be spent on those particular services. The proposed special rate variation, **will only apply to ordinary rates** and not to all the other charges.

Based on the number of rateable properties in Ballina Shire, Table Two shows how much ordinary rate revenue would be raised if Ballina Shire Council charged the same rates as neighbouring councils.

For example, if Ballina had the same average rates as Lismore and Tweed Councils, we would generate over \$7m or approximately 40%

extra rate income each year. This would make a huge difference to the range of services provided by Council, however this is not a goal Council is pursuing due to concerns regarding affordability. Importantly, Ballina Shire Council is delivering our services to the community on a significantly lower rate base, excluding Richmond Valley Council.

Even if the proposed special rate increase is approved by IPART, the additional income generated, which is estimated to be \$890,000 per annum, will continue to mean that Ballina Shire Council will raise millions of dollars less than the other councils listed excluding Richmond Valley, although Richmond Valley has 5.5% in increases approved for the next four years.

*The decision on the special rate proposal was a difficult decision for all Councillors, Council will now apply to IPART to see whether they will provide approval for the increase. This will not be known until May 2015. For further information on the special rate variation process refer to the IPART website [ipart.nsw.gov.au](http://ipart.nsw.gov.au) and click on the local government section.*

**TABLE TWO: INCOME BALLINA WOULD RECEIVE IF WE LEVIED WHAT OTHER COUNCILS CHARGE FOR ORDINARY RATES**

*Based on total number of rateable properties in Ballina Shire and average rates charged by other councils for 2014/15.*

PROPERTY TYPE	BALLINA RATEABLE PROPERTIES (#)	BALLINA (\$)	BYRON (\$)	COFFS HARBOUR (\$)	LISMORE (\$)	RICHMOND VALLEY (\$)	TWEED (\$)
Residential	15,355	859	1,077	1,006	1,134	785	1,290
Business	1,271	2,869	2,668	3,585	4,588	2,219	3,087
Farmland	1,057	1,314	1,787	1,846	2,180	1,270	2,122
<b>TOTAL RATE INCOME <sup>1</sup></b>		<b>18,225,000</b>	<b>21,817,000</b>	<b>21,955,000</b>	<b>25,548,000</b>	<b>16,217,000</b>	<b>25,974,000</b>
Difference to Ballina Shire Council's existing rate income \$ (%) <sup>2</sup>			3,592,000 (19.7%)	3,730,000 (20.4%)	7,323,000 (40.2%)	(2,008,000) (-11%)	7,749,000 (42.5%)

<sup>1</sup> This figure is the average rate for the councils listed multiplied by the number of rateable properties in Ballina Shire.

<sup>2</sup> This is the difference in rate income Ballina Shire Council would receive if we had the same average rates as listed for each council.



## Planning for our future

**Strategic planning can be undertaken in several forms. One of Council's important functions is land use planning. Since 1970, Council has relied on land use plans to guide development and provide infrastructure, plus protect the significant environmental attributes.**

Council's planning for future housing and employment areas is guided by the Ballina Shire Growth Management Strategy (2012). This sets Council's approach to new development through a series of maps and actions and is endorsed by the NSW State Government.

Council also has plans that promote and reinforce the character and sense of place for each area. Such plans are in place for Wardell (2003), Lennox Head (2002 and 2004) and Cumbalum (2006). There are also plans for specific areas or features of interest including the Richmond River (2005 and 2012), the Southern Cross Industrial Estate (2008), the West Ballina area (2009), Ballina's foreshore area (2008), the Clark Street Industrial Estate (2014) and Captain Cook Park (2014). These plan for a future for each place and are based on feedback from the community and stakeholders. Council uses these plans in its decision making and alongside other planning documents such as the local environmental plan and development control plan.

There are also other planning documents that Council has developed in the last 15 years, including the potential for a new village on the Alstonville Plateau (2000), retail activity in Ballina Shire (2003), heritage values (2008), commercial and industrial land uses (2008), affordable housing (2009) and bulky goods retailing (2011). Council has also recently completed character statements for a number of rural areas in the Shire (2014).

In 2015 we will continue the development of the Wardell Strategic Plan and the Ballina Major Regional Centre Strategy (see page 7 on how you can get involved).

Importantly, the above plans represent only one aspect in which Council thinks about and plans for the future. Council's key document is *Our Community: Our Future*, which identifies our community's values and future visions. It lays the ground work for Council, the community and other groups to work together to create a Ballina Shire we desire for the future.

*For more information on these plans, visit Council's website at [ballina.nsw.gov.au/councildocs](http://ballina.nsw.gov.au/councildocs) or contact Council's Strategic and Community Facilities Group on telephone 6686 1284.*



## DEVELOPER CONTRIBUTIONS BUILD MUCH NEEDED INFRASTRUCTURE

**Developers are required to provide and upgrade infrastructure such as roads, water and sewer pipes, pump stations, parks and open space, community facilities and car parking as part of their development. The nature and extent of the infrastructure depends on the type and scale of development.**

Generally developers provide infrastructure as part of their developments and through the payment of contributions to Council. These payments are known as developer contributions or section 94 contributions and section 64 contributions.

Council collects developer contributions to fund significant infrastructure projects throughout the Shire. For example, part of Ballina Heights Drive and the new roundabout at the intersection of Cherry and Tamar streets (currently being built, pictured above) are recent projects that are partly subsidised by developer contributions.

Council's developer contribution plans identify what infrastructure is required and the extent to which development is required to contribute to it. Current items outlined in Council's developer contribution plans include new roads such as Hutley Drive at Lennox Head and improvements to parks such as Pop Denison Park at Shaws Bay, as well as new sporting fields, water and sewer upgrades and new community buildings.

Construction of planned infrastructure funded through developer contributions relies on development occurring and demand for facilities. Generally, the need for infrastructure increases as development increases, and as development occurs money is collected by Council to provide the infrastructure. The collection of developer contributions is therefore subject to the pace, type and extent of development.

*Council's developer contributions are publicly available. Council is currently preparing a new developer contributions plan for the Cumbalum Precinct A development and is reviewing its plans for roads and open space and community facilities. For more information, visit Council's website at [ballina.nsw.gov.au/councildocs](http://ballina.nsw.gov.au/councildocs).*






## WHAT THINGS ABOUT BALLINA ARE IMPORTANT TO YOU?

Do you have an idea or vision for the future of Ballina? Are there changes you would make to Ballina?

Council is preparing the **Ballina Major Regional Centre Strategy** to plan and guide Ballina as an emerging regional centre over the next 20 years. Your views are important and there are many ways to share your thoughts and get involved.

### Get Involved

- **PHONE** the project team on 6686 1284
- **EMAIL** [BMRCS@ballina.nsw.gov.au](mailto:BMRCS@ballina.nsw.gov.au)
- Make a **WRITTEN SUBMISSION** to:  
The General Manager  
Ballina Shire Council  
PO Box 450  
BALLINA NSW 2478
-  Share **PHOTOS** that show things about Ballina that you like, would like to see, or would like to change, using the Instagram hashtag **#ballinafuture**.
- **MAP** your vision of Ballina's future using sMap. To download visit [ballina.nsw.gov.au/BMRCS](http://ballina.nsw.gov.au/BMRCS)
- **VISIT THE WEBSITE** for information and regular updates at [ballina.nsw.gov.au/BMRCS](http://ballina.nsw.gov.au/BMRCS)

*Council is keen to hear from you now so your views can be considered in preparing the strategy during 2015.*



## Ballina Twilight Market – Fawcett Park Ballina

The Ballina Twilight Market in Fawcett Park will again come to life this summer.

The market will be held every Thursday from 11 December 2014 until mid-January 2015 between 4pm and 8pm.

Set in Fawcett Park, visitors can enjoy live music, exotic stalls, food and coffee as well as the evening sunset and river breeze.

*For further details, contact the market operator on 0478 163 038.*



## Merry Christmas & Happy New Year

Ballina Shire Council has marked the start of the festive season by lighting up the tree on the lawn of the Ballina Visitor Information Centre.

The tree will be lit for the month of December and we encourage family and friends to make a special visit during the festive season.

*Ballina Shire Councillors and staff wish our residents and visitors a safe and happy Christmas and a very prosperous 2015.*





## RURAL SETTLEMENT CHARACTER STATEMENTS

Earlier in the year, Council asked rural residents what was special about 'their place'. Many people came along to the meetings to talk about what they loved about their local area, how they used the land and activities their communities are involved in.

Some of the issues raised were outside the scope of the project; however we wanted to respond to these issues in this issue of Community Connect:

### Mowing in rural areas and settlements

Mowing is sometimes a difficult activity to timetable, as the growth of grass is dependent on rainfall, sun and temperature. During our regular 'mowing' season, many Open Space and Reserves staff do little else except for mowing as the grass grows so quickly! Generally we schedule mowing to keep grass at reasonable levels based on the expected weather but sometimes the weather does not do as we expect. It is usually at these times that grass becomes overgrown.

Residents can ring Council to request mowing when this occurs. If there is an ongoing problem, more frequent mowing will be considered.

### Signage and play equipment for Tintenbar Oval

There has been no real play equipment at Tintenbar Oval for many years. Previously there were steel frames which were remnants of old play equipment belonging to the Trust. These were removed as there were no swings or other equipment remaining. Equipment will be included in the Open Space and Reserves forward planning. A sign for the oval has also been put onto the works program.

Questions were also asked about pedestrian linkages in and around Tintenbar and the possibility of formalising easements or using public land to increase pedestrian access, particularly between the school and the village. Unfortunately, all land in between these locations is privately owned and there are no easements that could be used for this purpose.

### Play equipment at Newrybar and Empire Vale

There is limited space at both these locations for play equipment. Usually for parks containing play equipment there is an ideal level of casual surveillance required to ensure the safety of park users and proper use of equipment. The area behind the Newrybar Hall is not ideal for play equipment for this reason. However, once the Pacific Highway is

complete, there may be room at another location.

There is a small area of vacant land on River Drive, Keith Hall, opposite the entry to Keith Hall Lane, which may be suitable for picnic tables or similar. There is no Council owned land in Empire Vale suitable for a children's park.

### Tennis Courts at Rous and Rous Mill

Each set of courts would need some work. The Rous community estimate that \$20,000 would be required to upgrade the court. The Rous Mill tennis courts are owned privately and it is difficult for the owner to now insure. Would Council consider purchasing the Rous Mill courts and upgrading them?

There are a number of difficulties with both of these, including financing the land purchase and court upgrades. Council usually looks to leverage off its own limited funds by accessing grant monies from various grant schemes for these types of projects. An active community group which can provide financial and in-kind support make grant applications much more attractive to funding bodies as they can see Council and the community working together toward a shared goal.

### Access to Beswick's Beach (Empire Vale Beach)

A question was asked regarding formalising the access track. Council owns the formed public road that is Empire Vale Road. Where the formed road ends is private property, and not owned or managed by Council. There is limited room to install picnic tables, toilets or rubbish bins at this location.

There is Crown Land adjacent to the beach but there are no formal access rights through the private property to reach it. For further information contact Crown Lands on telephone 1300 886 235.

### Toilet facilities along River Drive

Many in the community raised the issue of cyclist behavior along River Drive. One issue that was very strongly presented was that of cyclists not using toilet facilities before they ride and using the roadside as a convenience stop instead. Cyclists may be 'caught short' occasionally, but some of the behaviours noted by residents constitute a public health hazard and were pretty unpleasant. So, please, go before you go!

### More public boat ramps along River Drive

Public boat ramps need to be located on public lands and there is only one publicly owned riverfront section of land south of Ballina between





Ballina and Wardell. This is located at Keith Hall. Boat ramps require a certain amount of room to ensure safe access to the river as well as accommodate towed boats and parking. Council has been successful in securing a Roads and Maritime Services grant under the previous Better Boating Program to assess the site for suitability as a boat ramp facility. Quotations will be called in December for services for this investigation.

### Patches Beach

There no toilets, garbage bins, picnic tables or other facilities within the picnic area adjacent to the car park at Patches Beach. This will be placed into the works program for funding consideration in the next financial year.

### Pied Oystercatchers and 4WD's

Questions were asked about the needs of the pied oystercatcher and how 4WD vehicles affect them, with a view to allowing greater 4WD access to South Ballina Beach. There is a management plan which was developed by a number of government agencies to give pied oystercatchers a good chance of surviving and growing their population into the future. This plan can be found on Council's website [ballina.nsw.gov.au/councildocs](http://ballina.nsw.gov.au/councildocs).

### Planning Issues

#### Second Dwellings on Rural Properties

Council receives enquiries from time to time from rural landholders who are interested in building a second house on their property. Their reasons for doing so vary, but often include providing housing for family members, accommodation for farm workers and the opportunity for rental income. At present in Ballina Shire, second dwellings in the form of an attached dual occupancy are permitted on rural land in certain circumstances. It is also possible to obtain approval for a rural workers' dwelling subject to meeting specific criteria.

Council does not presently allow two dwelling houses on rural land that are substantially separated from each other (other than rural workers' dwellings). The reasons for this include potential impacts of effluent disposal, driveway access onto rural roads, conflict with agricultural activity and loss of agricultural land. On a broader scale, Ballina Shire also has extensive greenfield urban release areas which are projected to provide housing for the Shire for more than 30 years to meet housing demand.

Overall, there is clearly interest in second dwellings on rural properties from some landowners, there is equal concern from other landholders about the potential impacts. Council continues to monitor the concept of second rural dwellings on properties, being mindful of approaches taken by other local government areas and the types of enquiries received. For the time being though, there is no plan to change the current planning framework.

#### Village Zones

Council has received feedback from some residents indicating a preference for a village zone to be applied under local plans to rural settlements such as Meerschaum Vale and Tintenbar. The reasons for this vary but include addressing coal seam gas, greater recognition of areas and provision of opportunities for development.

Zoning of land in Ballina Shire is based on a settlement hierarchy that is well established. Ballina is recognised as the main centre in the Shire, with Alstonville, Wollongbar, Lennox Head and Wardell identified as

villages. These areas typically have urban zones applied to them and this reflects the land use history in these places. Other settlements in the Shire are known as hamlets or rural settlements. Rural settlement areas have rural zones applied to them, again to reflect the land use history and the planning hierarchy. An important thing to recognise about using a zone like a village zone is that it would likely bring about substantial change to areas where it is applied. Such change is not currently planned for in Ballina Shire and there are ways other than zoning to address many of the issues arising in rural settlement areas.

Regardless of zoning, Council recognises the sense of community and character that each rural settlement has. The rural settlement character statement project has been about trying to better document this within the local planning framework. The outcomes of the project, including the character statements that identify the special things about each rural settlement that was studied, will be integrated into local planning over time.

### Roads and rural areas

#### Speed limits

Residents of Newrybar and Tintenbar in particular expressed concern about speed limits on local roads, particularly Brooklet Road, Tintenbar Road and Fernleigh Road. Speed limits were reviewed on these roads by Roads and Maritime Services in 2013, and remained 80km/hour which is consistent with the NSW Government guidelines.

The speed limit within Newrybar was also reviewed, and the speed limit was lowered to 50km/hr in August 2013.

#### Newrybar 'CBD' issues

In the short term Council has recently allocated additional funds (September 2014 Council meeting) to provide additional parking along Brooklet Road. It is anticipated that this work will be completed prior to the 2014 Christmas period.

The longer term, and to coincide with the operation of the new highway, may be a good time to revisit the streetscaping plan and consider how to implement the remaining tasks identified.







## ESTUARY MANAGEMENT GRANTS 2014–15

**Council staff recently accepted two grants from the Minister for the Environment, The Hon Robert Stokes MP, to help pay for improvements to our local environment.**

The first project will be to restore the wetlands 'upstream' from the soccer fields at Chickiba which are suffering from too much water. You may have noticed the gradual decline of the Melaleuca trees on the hill above the soccer fields, where water has been held back over time. The funds will allow the restoration of a more natural hydrological regime over an eighteen month timeframe, which will allow the ecosystem to gradually restore itself.

The second grant will begin the implementation of the Northlakes Water Quality Improvement Plan. The quality of stormwater runoff from the urban areas of the Northlakes will be improved leading to improvement water quality in the lakes area and Fishery Creek. This will be done in partnership with the community, and Council has asked WetlandCare to assist with our community discussions.

The projects are likely to begin in February 2015.

*Image: L-R Ben Fitzgibbon – Office Environment and Heritage, James Brideson – Ballina Shire Council, Cassie Price – Wetland Care Australia, Mr Rob Stokes – Minister for the Environment and Heritage and Assistant Minister for Planning, Mr Don Page – Member for Ballina*

## Ballina Council named Employer of the Year

**Ballina Shire Council has been named the 2014 Novaskill Employer of the Year. Cr Sharon Cadwallader accepted the award which was recognition for programs for trainees and apprentices.**

Two Council trainees Zac Green and Alfie Proberts (pictured) have also been recognised for their contribution in fulfilling their roles with Council.

Zac Green, Council's Automotive School based trainee won the Disability Apprentice/Trainee category at the NSW and ACT Group Training Awards in Sydney and more recently the Automotive Apprentice/ Trainee of the year Award at the 2014 Novaskill Awards.

Zac is completing his automotive trade and has recently completed year 12 at Alstonville High School.

Alfie Proberts, Council's Trainee Ranger was recognised for his efforts and named the top 11 finalist for Trainee of the Year at the NSW and ACT Group Training Awards and received the Indigenous Apprentice/ Trainee of the year at the 2014 Novaskill Awards.

Council is proud of its commitment to host 23 apprentices and trainees across various trades including horticulture, mechanical, water operations, building, plumbing, electrical, civil construction, ranger and administration.

In recent years we have engaged more than 100 trainees and apprentices and we are committed to employing trainees and apprentices to provide career training and employment opportunities for some of our young residents.



*Image: L-R: Zac Green and Alfie Proberts*

## WIGMORE ARCADE UPDATE

**The Wigmore Arcade refurbishment is progressing well with most of the shopfront windows in place on the eastern side.**

**Cathy Walshe Hairdressing** is now in her original shop with a new look. **Corrie's** has relocated to Shop 141 and both Corrie and Renee are looking forward to welcoming customers into their new premises. **The Tobacco Station** is continuing to operate during the refurbishment.

Troy from **Daley's Gourmet Meats** will continue to operate during the refurbishment and is looking forward to the new shopfront. Troy recently won the Business of the Year category at the Ballina Coast and Hinterland Northern Star Business Excellence Awards and is pictured with Cr Sharon Cadwallader.

Works will temporarily cease from 19 December for Christmas and will recommence in January 2015.







## LATEST NEWS FROM BALLINA BYRON GATEWAY AIRPORT



### New fire station at Ballina Byron Gateway Airport

The Ballina Byron Gateway Airport and the new fire station site have been a hive of activity over the past few months.

Air Services Australia commissioned St Hilliers to construct the \$12.5m station and it is expected to be handed over to the ARFFS in December. The final fit out and commissioning will be undertaken and the facility should be operational in January 2015. Sixteen fire-fighting staff will be rostered at the station providing specialised Aviation services for Regular Public Transport flights in and out of the Ballina Byron Gateway Airport.

### Annual passenger numbers exceed 400,000

Daily direct jet flights to and from Melbourne and Ballina Byron Gateway Airport with Jetstar commenced in September 2014 and are proving very popular.

In December there will be up to 35 jet services a week with Virgin Australia and Jetstar, including up to four Sydney and one Melbourne flight each day. Rex Airlines will provide two flights per day to Newcastle and Sydney, so remember to make Ballina Byron Gateway Airport your first choice when you're looking to get away or welcoming friends and relatives!



## 'BALLINA...A BREATH OF FRESH AIR' CAMPAIGN

Council's Tourism Section together with the Ballina Byron Gateway Airport is pleased to announce the launch of a new marketing campaign "Ballina...a breath of fresh air" to the Melbourne market.

The campaign will target couples aged 35 to 64 years living in Melbourne and planning to take a holiday within Australia in the near future.

The aim of the campaign is to build destination awareness and appeal of the Ballina Coast and Hinterland and to capitalise on the extra flights from Melbourne to Ballina. The campaign will be in market for November through to December 2014 with the travel period being for January to February 2015.

If you have friends or relatives visiting you over the holiday season, make sure you call into the Ballina Visitor Information Centre for an update on all there is to see and do in our own backyard!

More information is available at [discoverballina.com](http://discoverballina.com)

## road projects

### Projects underway or recently completed

**RIFLE RANGE ROAD** – Road reconstruction completed (Bitumen seal)

**MARTIN STREET** – Road reconstruction completed (Bitumen seal)

**TAMAR STREET** (Between Grant and Kerr Streets) – Completed asphalt overlay including kerbing and formalised car parking

**WARDELL ROAD** – Road reconstruction completed (Bitumen seal)

**ROUNDAABOUT – TAMAR / CHERRY STREET** (under construction) – Due for completion early 2015 (pictured right)

**BROOKLET ROAD, NEWRYBAR** – Works have commenced to widen road shoulder which will provide additional car parking for Newrybar Village

**CAR PARK – FISHERY CREEK CAR PARK** (adjacent to Roads and Maritime Services depot)

**COASTAL SHARED PATH (WEST)** – North Angels Beach to Headlands Drive completed



**COASTAL SHARED PATH (WEST)** – Skennars Head Road to North Creek Road completed



### Projects due to commence 2015

**PIMILCO ROAD** – Pavement reconstruction

**ULRALBA ROAD** – Pavement reconstruction

**THE RIDGEWAY, BALLINA HEIGHTS** – Pavement reconstruction

**RIVER STREET** – Pavement reconstruction between Grant and Kerr Streets

**ROUNDAABOUT – MOON STREET / FAWCETT PARK, BALLINA** – Reconstruction

**WINTON LANE, BALLINA** – Shared zone improvements to complement Wigmore Arcade upgrade

**COASTAL SHARED PATH (WEST)** – North Creek Road from Tara Downs to Amber Drive



**COASTAL SHARED PATH (EAST)** – Sharpes Beach Underpass to Flat Rock to Angels Beach Underpass



Copyright: Land & Property Information 2014.





## Have your say on Council's draft Plan of Management for Community Land

**Council is updating its Plan of Management for Community Land in Ballina Shire and invites your feedback.**

### What is community land?

Community land is land owned by Council and held on behalf of the community for a variety of uses. Examples of community land are parks, sportsgrounds and natural areas and include areas of the Ballina Shire such as Crawford Park in Alstonville, Hillpark Oval in Wollongbar, Chickiba Park in East Ballina and Wigmore Park in Ballina.

### What is a plan of management?

A plan of management must be adopted for all community land in accordance with the Local Government Act 1993.

The plan outlines Council's planned approach to the management of the land. It also enables occupation of the land by specific users and groups and identifies the scale of such land uses and improvements to facilities.

### Has the plan been reviewed recently?

The current plan was originally adopted by Council in 1995. It has had a number of minor amendments since that time but has not been substantially reviewed or updated.

Council recently resolved to update the plan and seek community feedback by placing it on public

exhibition. The main change to the plan is to streamline and simplify its content to make it easier to use.

### Where can I access a copy of the draft Plan?

You can view a copy at Council's Community Access Points:

- Customer Service Centre, 40 Cherry Street Ballina
- Alstonville, Ballina and Lennox Head libraries
- Website [ballina.nsw.gov.au](http://ballina.nsw.gov.au)

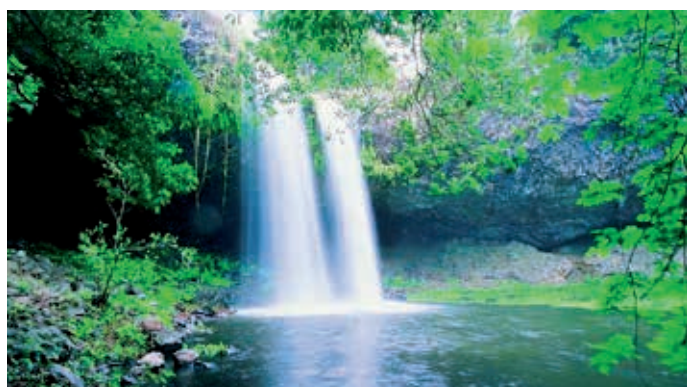
### How can I provide input into the updated plan?

Written submissions are welcome and should be addressed to:

General Manager  
Ballina Shire Council  
PO Box 450  
BALLINA NSW 2478  
Email [council@ballina.nsw.gov.au](mailto:council@ballina.nsw.gov.au)

**Submissions close: Wednesday 28 January 2015**

*If you would like further information please contact Council's Strategic and Community Facilities Group on telephone 6686 1284 or email [council@ballina.nsw.gov.au](mailto:council@ballina.nsw.gov.au)*



## market calendar

There is a market or two held every weekend in the Ballina Shire. Discover original artworks, handicrafts, fashion, jewellery, second hand goods, as well as fresh local produce...or just sit back relax and enjoy the sights and sounds of your local market.

### BALLINA MISSINGHAM FARMERS MARKET

Kingsford Smith Drive  
**Every Sunday**  
6am – 12noon  
0416 048 241

### BALLINA TWILIGHT MARKET new

Fawcett Park, Ballina  
**Every Thursday**  
**11 Dec 14 – Jan 15**  
4pm – 8pm  
0478 163 038

### ALSTONVILLE FARMERS MARKET

Bugden Lane Car Park  
(behind Quattro Country)  
**Every Saturday**  
8am – 12noon  
0478 163 038

### ALSTONVILLE COMMUNITY MARKET

Alstonville Showground  
**2nd Sunday**  
8am – 12.30pm  
6628 1568

### BALLINA COMMUNITY MARKETS

Canal Road  
**3rd Sunday**  
7am – 1pm  
6687 4328

### LENNOX COMMUNITY MARKETS

Williams Reserve  
**2nd & 5th Sunday**  
From 8am  
[lennoxmarket@gmail.com](mailto:lennoxmarket@gmail.com)



## Ballina Fair Go

20 December

Missingham Skatepark Ballina

[facebook.com/ownlifebeinit](https://www.facebook.com/ownlifebeinit)



Australia's longest standing skateboarding competition is set for its 14th year. With divisions for female, juniors, opens, and sponsored, it's going to be an exciting event! The Bowl Jam will also be going down in the afternoon to keep the heritage alive with \$500 up for grabs. Sponsored riders will be battling it out with \$1000 on offer for the top three places. It's going to be a big old skateboarding Christmas brought to you by Ownlife, a collective of passionate skateboarders who have run the event in past years.

Photo courtesy: Matt Hooker

## Alstonville NYE Family Festival

31 December

Alstonville Showgrounds

**NEW YEARS EVE FAMILY FESTIVAL**  
AT THE ALSTONVILLE SHOWGROUND  
Starts at 5.00PM to 10.00PM  
Entry \$2 Per Person  
This is an ALL WEATHER VENUE  
**FIREWORKS** @ 9:30PM  
FOOD - DRINKS  
ENTERTAINMENT FOR THE WHOLE FAMILY  
Lots of Rides  
ON-SITE PARKING AVAILABLE  
Alcohol free event  
Mandatory bag search  
Enquiries: Liz Bugden - Ph: 0428 285 048  
Proudly Sponsored by:  
Apex, Red Earth, TAFE, and others.

Come along and join us for the Alstonville NYE Family Festival at the Alstonville Showgrounds from 5pm to 10pm. We have lots of kids rides,

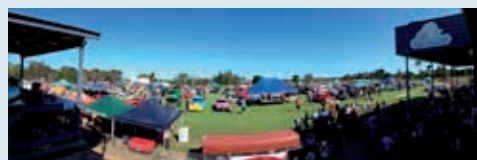
live music, a pantomime and entertainment for the kids from 6pm. The event is alcohol free and security will be onsite. It's a bargain at only \$2 per person entry with loads of car parking available.

## North Coast Street Machines Show-n-Shine

10 January

Ballina Rugby League Football Grounds

[northcoaststreetmachines.com.au](http://northcoaststreetmachines.com.au)



The popular North Coast Street Machine annual "Show-n-Shine" will be held at Ballina Rugby League Grounds on Saturday 10 January. Car setup will be from 12 noon, with gates opening to the public from 2pm. There will be street machines, vintage and veteran cars, hot rods and special interest vehicles, trade displays, full catering, tappet cover racing, a wheel changing competition and plenty to keep everyone occupied. Australian Street Machine Federation members will be judging the top 10 vehicles and with many other trophies up for grabs. It truly is a show not to miss!

## Ballina Lakeside Shaws Bay Swim

8 February

Shaws Bay

(Ballina Lakeside Holiday Park)



[ballinasurfclub.com.au](http://ballinasurfclub.com.au)

The Ballina Lighthouse & Lismore Surf Lifesaving club will be hosting the inaugural "Ballina Lakeside Shaw's Bay Swim" on the Sunday 8 February 2015. The swim(s) will encompass a one and two lap course at the Eastern end of Shaw's Bay (starting and finishing from Ballina Lakeside Holiday Park) with a 'dash for cash' from the Shaw's Bay Hotel back to the beach at Lakeside. One lap of the Bay is approximately 850 metres, two laps 1.7km and the dash for cash 200 metres. The event will provide a challenge for

recreational and competitive swimmers. The Ballina Lakeside swim event is part fundraiser and part community challenge, with a variety of age categories and distances for people to have a go (attempt one – or go for all events). There will be a community BBQ on the day and plenty of vantage points for spectators.

## Alstonville Wollongbar Fun Run Challenge

14 March

Alstonville High School

[alstonvillewollongbarfunrun.com.au](http://alstonvillewollongbarfunrun.com.au)



Alstonville Wollongbar Fun Run Challenge is a joint venture of the Wollongbar Public School P&C and Alstonville High School P&C associations. It is a great community event for people of all ages and fitness levels. There are four events: 10km Run, 5km Run, 1km Junior Dash and 5km Walk. All events start at Alstonville High School and are sponsored by local businesses.

## Skateboarding Australia Clinics

31 January, 21 February, 14 March  
9am – 12noon

Missingham Skatepark, Ballina



Skateboarding Australia, in partnership with local Councils, has formed the Northern Rivers Skateboarding Hub. The main activities within the Hub are the free StreetWise clinics, which are part of a national grassroots development program designed to offer youth the opportunity to become actively involved in skateboarding. These clinics are delivered by nationally accredited coaches, who are dedicated skaters within the local scene. Registrations are taken on the day. Participants under 18 will need a parent/guardian to sign the registration form. All equipment is provided.





## CHRISTMAS HAMPERS

### Are you stuck for Christmas ideas?

The Ballina Visitor Information Centre has a huge range of local produce to make your very own Christmas Hamper. Choose from Ballina Honey, Duck Creek or Summerland House Farm Macadamia Nuts, Hightrees Estate Coffee, Koala Tea, Brookfarm Museli, Wallaby Bites, or Rainforest Foods Jam. The hampers can be made to order to the value of your choice starting from \$25 per hamper.

*Come on in and see the friendly team at the Ballina Visitor Information Centre at 6 River Street and stock up on last minute Christmas gifts or call 1800 777 666.*

## Ballina RSL Memorial Park Works

Ballina RSL Memorial Park is soon to have the war memorial (cenotaph) relocated within the public reserve. This is to facilitate a more functional area within the reserve for commemoration ceremonies, and in time for the ANZAC Day centenary in 2015. The works will involve some vegetation and garden removal, including deconstruction and reconstruction of the cenotaph and associated landscaping in keeping with the Ballina RSL Memorial Park Concept Plan.

The project is a partnership with the Ballina RSL Sub Branch, a number of suppliers and contractors from the region and Ballina Shire Council.



### BALLINA FAIR GO

**20 December**

(Sunday 21 December back up date if weather cancels Saturday)

Missingham Skatepark Ballina

Richard Flude

0423 639 546

[richard@ownlife.com.au](mailto:richard@ownlife.com.au)

[facebook.com/ownlifebeinit](https://www.facebook.com/ownlifebeinit)

### ALSTONVILLE NYE FAMILY FESTIVAL

**31 December, 5pm to 10pm**

Alstonville Showgrounds

Liz Bugden

0428285048

[lbugden@gmail.com](mailto:lbugden@gmail.com)

### NORTH COAST STREET MACHINES SHOW N SHINE

**10 January**

Ballina Rugby League Football Grounds, Bentinck Street

Alan Davis – President

0404 087 143

[nthcoastsm@hotmail.com](mailto:nthcoastsm@hotmail.com)

[northcoaststreetmachines.com.au](http://northcoaststreetmachines.com.au)

### SKATEBOARDING AUSTRALIA FREE WORKSHOPS

**31 January, 21 February, 14 March**

**9am – 12pm**

Missingham Skatepark Ballina

[sba.org.au/learn-to-skateboard](http://sba.org.au/learn-to-skateboard)

### BALLINA LAKESIDE SHAW'S BAY SWIM

**8 February**

Shaws Bay (Ballina Lakeside Holiday Park)

Andrew Dougherty

0418 640 372

[andrewd1@bigpond.com](mailto:andrewd1@bigpond.com)

[ballinasurfclub.com.au](http://ballinasurfclub.com.au)

### ALSTONVILLE WOLLONGBAR FUN RUN CHALLENGE

**14 March**

Alstonville High School

Catherine Black

0428 824 626

[wollongbarpc@gmail.com](mailto:wollongbarpc@gmail.com)

[alstonvillewollongbarfunrun.com.au](http://alstonvillewollongbarfunrun.com.au)





## SWIMMING POOL SEASON... NOW IS THE TIME TO CHECK YOUR FENCE!

With summer around the corner it's a good time to carry out a check on your pool fencing. Did you know that registering your swimming pool on the NSW Government's Pool Register website is mandatory?

- Are all gates working, opening outwards, self-closing and latching?
- Have all tree branches been cut back near the fence so they don't assist in climbing the fence?
- Does any garden furniture, BBQ and pot plants assist climbing?
- Are there gaps under the fence greater than 100mm in diameter?
- Is the fencing in sound condition?
- Is a resuscitation chart in place near the pool?
- And remember... always, always supervise children in and around your pool.

### Are you thinking of leasing or selling a property with a pool?

From 29 April 2015, properties with a swimming pool or spa that are to be sold or leased must have a valid pool certificate of compliance or relevant final occupation certificate (each valid for three years from date of issue). Properties with a swimming pool or spa cannot be advertised for sale or lease if they do not have this important documentation attached to the sale contract or tenancy agreement.

For further enquiries, contact our Building Services Section on telephone 02 6686 1415.

tamar  
street  
car park  
is now  
four hour  
parking



## holiday parking

The Christmas holidays are looming and that means parking is in great demand in our town centres. To ensure people have access to parking, restrictions are in place in these areas.

Please check timed parking restrictions to avoid receiving a Penalty Infringement Notice (PIN). Council Rangers and Parking Officers conduct regular patrols in these areas, including weekends.

Fines of \$104 will be issued for overstaying the sign posted time limit and there is a \$519 penalty for parking in a disabled parking space without a current permit.

## SWIM BETWEEN THE FLAGS 2014 – 2015

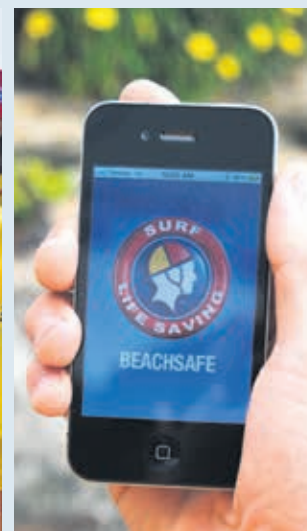
The summer swimming and surfing season is here and beaches in the Ballina Shire are again being patrolled by contracted surf lifesavers and volunteers.

Please swim between the flags. Patrols normally operate from 9am to 5pm.

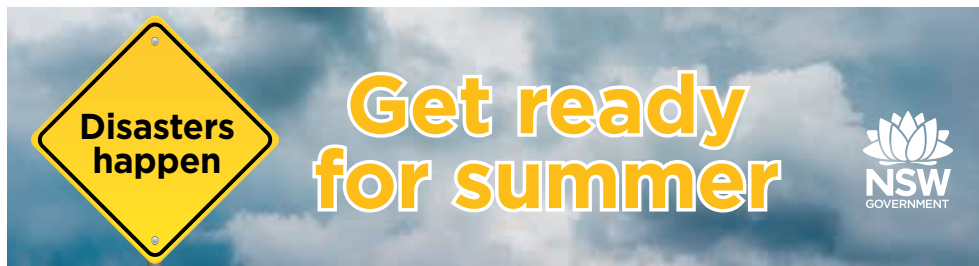
Download the free iPhone application for up-to-date beach and surf safety information at [beachsafe.org.au](http://beachsafe.org.au)

BEACH	PATROLS START	PATROLS FINISH	DETAILS
Lennox Head Beach	22/09/2014	17/04/2015	Mon-Fri*, 9am - 5pm (2 Lifeguards)
Sharpes Beach	20/12/2014 03/04/2015	26/01/2015 19/05/2015	7 days a week, 9am - 5pm (2 Lifeguards)
Shelly Beach	20/12/2014 03/04/2015	26/01/2015 19/04/2015	7 days a week, 9am - 5pm (1 Lifeguard)
Lighthouse Beach	22/12/2014 03/04/2015	23/01/2015 17/04/2015	Mon-Fri*, 9am - 5pm (2 Lifeguards)

\*Volunteers on weekends and public holidays







### Don't wait till it's too late - GET READY NOW!

At some stage, all of us will be impacted by disasters such as Fire, Flood or Storm.

Preparing for disasters helps you and your family cope and make better decisions when an emergency affects you.

It only takes **five simple steps** to make sure you and your family are ready.

<b>1</b> Know your risk	<p><b>Think about the area you live in and the types of disasters that could happen. Are you and your family at risk?</b></p> <p>To find out more - go to NSW Emergency Services agencies:</p> <ul style="list-style-type: none"> <li>» <b>Bushfire</b> - NSW Rural Fire Service <a href="http://www.rfs.nsw.gov.au">www.rfs.nsw.gov.au</a></li> <li>» <b>Flood, Storm and Tsunami</b> - NSW State Emergency Service <a href="http://www.ses.nsw.gov.au">www.ses.nsw.gov.au</a></li> <li>» <b>House Fire</b> - Fire &amp; Rescue NSW <a href="http://www.fire.nsw.gov.au">www.fire.nsw.gov.au</a></li> </ul>
<b>2</b> Plan for what you will do	<p><b>Sit down and talk with your family and plan for what you will do if a disaster affects your area</b></p> <p>Make important decisions like when to leave, what to take, and what to do with pets and animals. Don't leave it until the last minute.</p> <p>Disasters can happen with little or no warning. How will you and your family get to a safe place? You could be separated from each other. How will you contact each other? Think about how you will protect your pets, important documents and personal mementos.</p> <p>Plan how you will escape a fire in your home and practise it with your family.</p>
<b>3</b> Get your home ready	<p><b>Prepare your home by doing general home maintenance and checking your insurance</b></p> <ul style="list-style-type: none"> <li>» <b>Trim</b> overhanging trees and branches, and remove dead and dry vegetation from around the house</li> <li>» <b>Clean</b> out gutters and downpipes</li> <li>» <b>Secure</b> or put away loose items in your yard or balcony</li> <li>» <b>Check</b> the roof is in good repair</li> <li>» <b>Do</b> a home safety audit and check your smoke alarms are working</li> <li>» And <b>make sure</b> that your home and contents insurance is up to date.</li> </ul>
<b>4</b> Be informed	<p><b>Find out how to prepare and what to do if there is a disaster in your area</b></p> <p>The best way to keep up to date is to visit NSW Emergency Services websites</p> <ul style="list-style-type: none"> <li>» <b>Bushfire</b> - NSW Rural Fire Service <a href="http://www.rfs.nsw.gov.au">www.rfs.nsw.gov.au</a></li> <li>» <b>Flood, Storm and Tsunami</b> - NSW State Emergency Service <a href="http://www.ses.nsw.gov.au">www.ses.nsw.gov.au</a></li> <li>» <b>House Fire</b> - Fire &amp; Rescue NSW <a href="http://www.fire.nsw.gov.au">www.fire.nsw.gov.au</a></li> </ul>
<b>5</b> Look out for each other	<p><b>Share information with your family, friends, neighbours and those who may need assistance.</b></p> <p>Talk about your plans with family, friends and neighbours before an emergency happens.</p> <p>Neighbours can help each other in many ways and can include people in your street or community.</p>

### key local info...

#### ROAD CLOSURES

[myroadinfo.com.au](http://myroadinfo.com.au) for Ballina Shire rural road info, [livetraffic.com](http://livetraffic.com) for highway and major arterial road info

#### RADIO STATIONS

Paradise FM 101.9, ABC North Coast 94.5, 2LM 104.3, ZZZ FM 100.9

**WEATHER CONDITIONS** [bom.gov.au](http://bom.gov.au)

#### FIELD CLOSURES

24-hour hotline 02 6686 1499 (recorded messages from individual sporting clubs).

#### BALLINA BYRON GATEWAY AIRPORT

[rex.com.au](http://rex.com.au)  
[jetstar.com.au](http://jetstar.com.au)  
[virginaustralia.com.au](http://virginaustralia.com.au)

## MYTH BUSTERS

### RECYCLED WATER IS NO LONGER HAPPENING

**Not true.**

Recycled water is already being used on sports fields and will start to travel to new houses for use in toilets, on gardens and clothes washing next year.

### COUNCIL DOESN'T FUND TOURISM PROMOTION

**Not true.**

Ballina Shire Council funds a wide range of tourism promotion activities that encourage visitors to experience the Ballina Coast & Hinterland. Most of Council's promotional activity is carried out in regions identified as our target markets, which is why residents may not see the advertising locally. Our demographic target markets include south east QLD and regional NSW, as well as emerging markets such as Melbourne. See page 11 for our latest campaign.

### COUNCIL HAS DONE NOTHING TO ADDRESS CLIMATE CHANGE

**Not true.**








Council has been considering climate change for some years now. We have worked with Council's insurers to identify areas of potential risk from all aspects of climate change, including the potential for sea level rise, changes to weather and safety. Several years ago we invited 100 randomly selected community members to discuss how to address climate change in the Ballina Shire. This led to the development of the Ballina Shire Climate Action Strategy which was adopted by Council in December 2011. The actions in this document and the ways in which Council is working to address them are contained in Ballina's Environmental Action Plan.

We are also working with our neighbouring councils and recently hosted a forum for councillors and senior managers on the latest information about climate change and how to best manage this important issue. You can download the Ballina Shire Climate Action Strategy from our website [ballina.nsw.gov.au/councildocs](http://ballina.nsw.gov.au/councildocs).

*If you have any other stories you would like clarified please email Council at [mythbusters@ballina.nsw.gov.au](mailto:mythbusters@ballina.nsw.gov.au)*



## Off-leash dog exercise areas

-  bicentennial gardens (northern area of the reserve), ballina
-  compton drive, east ballina
-  gap road, alstonville
-  seven mile beach, north of lake ainsworth, lennox head (old 4wd access)
-  ballina heights estate, eastern reserve area, ballina heights
-  headlands drive drainage reserve, skennars head
-  the spit, ballina

### conditions of use

1. Your dog must always be under effective control. 'Effective control' means your dog responds to your command and remains close to you.
2. If your dog is not sufficiently trained to be under your effective control and shows signs of anti-social behaviour and aggression you must remove the dog immediately from the area.
3. Pick up your dog poo and dispose in a waste bin.
4. Be considerate of all other users of the area. It is not for the exclusive use of dogs and their owners.
5. Your dog must be accompanied at all times by an adult or person over 16 years.

**WARNING:** Dogs not being managed responsibly in these areas will be seized by Council Rangers. Thank you for your co-operation.



## Pooches in public places to be on a lead

Dogs are allowed in most public places in the Ballina Shire but unless they are in a specific off-leash area, all dogs must be on a lead that is controlled and held by a competent person over 16 years of age. Dogs are allowed on Angels Beach, Sharpes Beach and Flat Rock Beach but they must be on a lead. It's a good idea to check the signs in public places to see if dogs are allowed in that location.

## random dog checks

Council Rangers will be increasing their patrols particularly around beaches this summer. Random checks will also be done to make sure dogs are registered and microchipped.

## RANGERS TO THE RESCUE

Ballina Council Rangers recently rescued a family of abandoned dogs that were infested with fleas. The Rangers washed, wormed, vaccinated and treated all five pooches before giving them some hearty and much needed food and drink.

All of these dogs were successfully treated and are now adopted into loving family homes.



Image: Ranger Joe Sabine with rescued dogs.





## 4WDs on Seven Mile Beach at Lennox Head

Accessing the beach via 4WD is a popular activity, especially over the summer holiday period.

In Ballina Shire 4WD drivers can access Seven Mile Beach at Lennox Head via Camp Drewe Road north of Lake Ainsworth (see map to the right).

You will need a beach access permit before you take your 4WD on Seven Mile Beach. Monthly, six monthly or twelve monthly permits are available at the following locations:

- Ballina Shire Council, 40 Cherry Street, Ballina.
- Ballina Visitor Information Centre, 6 River Street, Ballina.
- Lennox Head Shell Service Station, Byron Street, Lennox Head.
- East Ballina Caltex Service Station, Links Avenue, East Ballina.

### Below are some important guidelines for safe and responsible 4WD beach access:

- 4WD access to Seven Mile Beach is to be carried out in accordance with the applicable laws governing vehicle use of beaches and Council's guidelines.
- 4WD beach permits issued by Ballina Shire Council do not permit access to the beach north of the Shire boundary (about 3.3km north of the Ballina Shire Council beach access point).
- 4WD vehicles must only be driven on and off the beach at the designated public access point only.
- Vehicles must not to park on the beach within 20 metres of the access point or along the vehicle access track.
- 4WDs must not:
  - Be driven above the high tide mark except when moving onto and off the beach at the designated beach access point.
  - Be driven within 10 metres of any part of the vegetated dunes except when moving onto and off the beach at the designated beach access point.
  - Cross or park on the dunes or other foreshore areas except when moving onto and off the beach at the designated beach access point.
- The maximum speed limit for all motor vehicles on the beach, including 4WDs is 30km/hour.
- Where vehicles come within 50m of pedestrians and other beach users, the maximum speed limit is 15km/hour. Vehicles must be at least 15m away from other beach users at all times.
- Drivers and passengers must wear seat belts. Riding in the rear of utilities or in a similar unrestrained manner is not permitted.
- The towing of tyres or other recreational implements for recreational purpose by vehicles is not permitted.
- Pedestrian beach users have right of way over motor vehicles at all times.
- 4WD access to Seven Mile Beach may be closed at times for beach management, emergency, safety and other operational reasons.

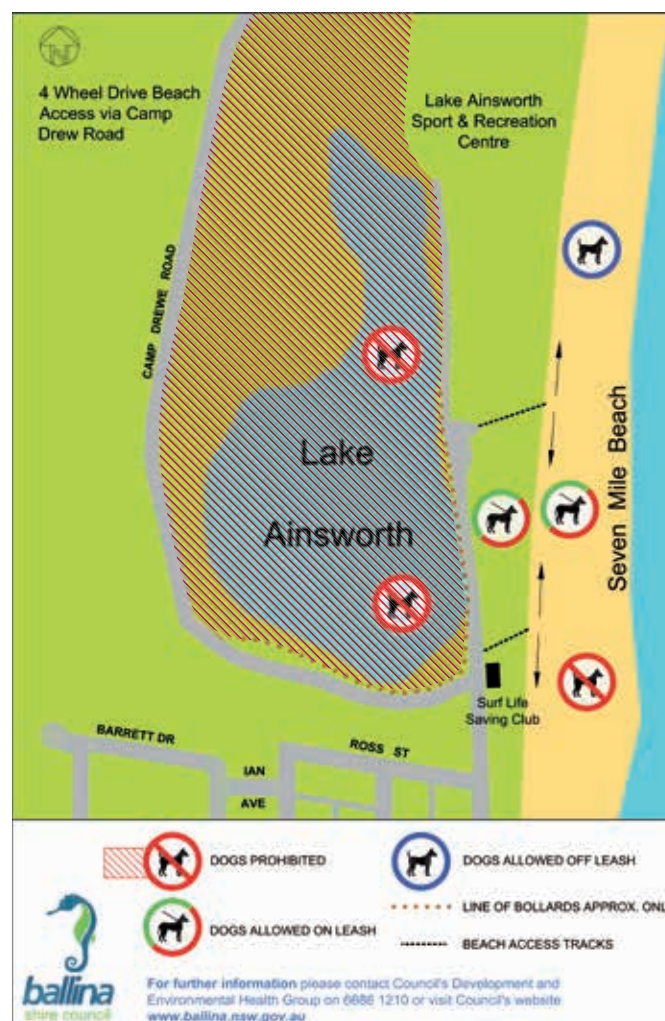
Full details are available in Council's Guidelines for 4WD Vehicles on Seven Mile Beach, available when you purchase a permit or downloadable from [ballina.nsw.gov.au](http://ballina.nsw.gov.au)

## Lake Ainsworth is a Dog Free Zone

Lake Ainsworth is an important recreational area for locals and visitors and is situated in a sensitive ecological location. For this reason, dogs are banned from swimming in the Lake. Council has recently received complaints regarding the number of dogs swimming in the Lake.

To respond to these community concerns, Rangers will be increasing patrols in and around the Lake Ainsworth area. If a dog is found to be on the Lake side of the bollards, the owner or person in charge of the dog may be issued a \$330 penalty infringement notice.

Council Rangers have recently hosted information sessions at the Lake to encourage awareness on the regulations in the area. Council and the Rangers would like everyone visiting the Lake to enjoy its natural beauty, so please remember to do the right thing. Please refer to the map below on where dogs are banned in the Lake Ainsworth vicinity.





## TRANSFORM ART PROJECT 2104

An Essential Energy padmount transformer, opposite the Cultural & Community Centre in Lennox Head has been 'Transformed' with participation from artistically minded young people under the mentorship of local professional artist Melissa Wright.

The Transform Art Project 2014 was funded and organised in partnership with Lennox Arts Board Inc, Life Without Barriers, Foundations Care, Essential Energy and Ballina Shire Council.

"The great thing about the project is that it empowers the group of young people with new skills and exposes them to a unique style of art that is self-aligned and pleasing to the community," Melissa said.

Future Transform Art projects are planned for Ballina and Alstonville.



## Make your Mark – creative workshops for young and old(er)

Ballina Shire Council recently hosted free creative workshops that brought generations together to share experiences of our Ballina community. The workshops were facilitated by professional pottery artists that worked with participants to carve, stamp, write or draw what they love about Ballina onto wet outdoor clay pavers.

These pavers will now be fired ready to be laid in a public place in Ballina early next year. Paver decorations included designs inspired by found or cherished objects, drawings of local animals, depictions of community activities, lines of poetry and significant words and imprints of local flora.

This project provides a lasting record of what different generations currently enjoy about our community and what they value living, working and playing in Ballina. The information provided through the workshops will also form part of the community input into the Ballina Major Regional Centre Strategy that plans for the next 20 years.



## THERE'S NO SUCH THING AS A DOG POO FAIRY

**In an effort** to keep our beaches, waterways, parks and foreshore areas clean and tidy Council encourages residents and visitors to pick up after their dog. It is the responsible thing to do and it is also a requirement under the NSW Government's Companion Animals Act 1998.

If you leave the dog poo on the ground, the Dog Poo Fairy isn't going to come and pick it up! In fact you can actually be fined by a Ranger, and the fines exceed \$275.

Think about your actions, think about your community and do the right thing. Picking up after your dog will help to keep our streets, parks and beaches clean.

**There's no such thing as the Dog Poo Fairy! Bag it and bin it for a cleaner, healthier Ballina Shire.**





## Gary Bond

*What do you like about living in Ballina Shire?* I love the people and the climate. Also it's the relaxed atmosphere and laidback lifestyle.

*What is the one thing that you think the Council should do to improve the lifestyle you have in Ballina Shire?* I would like to see the parking and traffic improved in the town centre to make it easier to get around and also to fix the roads although, no road works over the holiday periods! I would also like to see more events and activities that attract people to our region.

**Council's Response:** In respect to parking and traffic in the Ballina Town centre, Council has recently purchased and constructed the new car parks at 74 and 78 Tamar Street, providing an additional 69 car parks. Also we are currently constructing a new roundabout at the intersection of Tamar and Cherry Streets and the primary purpose of this is to improve the traffic flow around the town centre. During 2015 Council will also be reconstructing the existing roundabout at the intersection of Moon and River Streets, along with upgrading Moon Street from River Street to the Richmond River to further improve the streetscape in this location. Other works planned include improvements to Winton Lane at the northern end of the Wigmore Arcade, with these works focusing on improved landscaping and traffic calming infrastructure. A new public toilet will also be constructed in this location during the first half of 2015.

Council understands roads is the number one priority for many people in the community and we are continually looking to invest as much funds as we possibly can into road infrastructure, along with seeking grant opportunities as they arise. Road funding is a never ending battle as it is amazing how expensive road infrastructure is. The timing of any road works always considers indirect issues such as peak traffic flows and holiday periods.

Council has a substantial festival and event funding program where we provide seed or support funding for selected events. The events Council is supporting in 2014/15 include the Ballina Prawn Festival, the Ballina Coastal Country Music Festival, the Rotary Food and Wine Festival, Christmas Carols in Ballina and Lennox Head, New Years Eve in Alstonville, the Ballina Fine Food and Wine Affair, the Skullcandy Oz Grom Open and the Summerland House Farm Country Fair. This

program is working extremely well with Council providing the financial support to assist these events, with the volunteers co-ordinating the events then leveraging those funds through other sponsorship and in-kind support to maximise benefit to the community.

## Rebecca Blair

*What do you like about living in Ballina Shire?* I feel very lucky to have such lovely views so often. When I'm at home, or driving somewhere, I am constantly looking at beautiful coastlines, trees, animals. It's a great outdoors lifestyle, a healthy and happy way to raise the kids.

*What is the one thing that you think the Council should do to improve the lifestyle you have in Ballina Shire?* I would love the main retail/food precinct of River street to be vibrant and enticing on Friday and Saturday nights. Especially during Spring and Summer, when it cools down and as the sun goes down. I'd love to sit down and enjoy the atmosphere.

I would imagine it's a catch-22 situation; the customers won't come until the shops are open, and the shops won't open until the customers are there. Perhaps Council could offer breaks on rates to businesses who agreed to open late 1 or 2 nights a week?

**Council's Response:** There are limitations to what Council can do to encourage businesses to open, with our main focus being on the on-going upgrades to the streetscape in River Street, along with the various car parking and other improvements we mentioned in the earlier people poll question. Also the current refurbishment of Wigmore Arcade is designed to provide a more vibrant shopping experience and we are hoping this in turn will encourage increased visitations in the town centre and longer opening hours. Council's tenant at the Wharf Bar and Café (formerly Pelican 181) has also done a great job in refurbishing that restaurant and they are opening in the evenings. Council is also supporting a further trial of the Twilight Markets over December/January to increase activity in the town centre (see page 7). Ideally it would be great to see other landlords refurbishing their town centre buildings and Council is always interested in considering any ideas that might encourage increased commercial activity. The idea of rates relief would be tricky to administer as there are no doubt many other businesses who already open late and would also like relief on their rates.



**Position with Council and some details about your duties in that position?** Sportsgrounds Maintenance Supervisor, which means I look after all the sportsgrounds maintenance issues and programmes in the Ballina Shire. I also supervise all Open Spaces and Reserves mowing activity.

**How long have you been with Council?** About 11 years

**What aspects of your job do you like most?** I like the great outdoors and being able to help the community

**What were you doing prior to working for Council?**  
Golf Course Superintendent

**What do you like to do in your spare time?** Put my Kayak in the water and pretend to fish

**What's the best movie you've seen?**  
Life of Brian

**Most amazing place you've been to?**  
New Zealand

**What music do you listen to?** Radio

**What can't you live without?** Family

**Where were you born and raised?**  
Goulburn, although raised in Rappville and Casino.

**If I won a lot in the lotto I would....** come to work Monday because I Love the place !

**I wish I had a special talent for OR If I had the chance I would...**  
win the Tour De France.







## Be water wise these holidays

Here are some helpful tips to ensure sustainable water use throughout summer:

- No unattended hoses or sprinklers between the hours of 9am and 4pm.
- Limit outdoor watering between the hours of 6am and 9am and between 4pm and 10pm.
- Do not water hard surfaces. High pressure cleaners may be used with 10L/min or less recommended for domestic use.
- Where possible, vehicles and boats should be washed on the lawn
- Ensure your hose is fitted with an on/off nozzle.

For more information of water saving measures, visit [ballina.nsw.gov.au](http://ballina.nsw.gov.au) or [rouswater.nsw.gov.au](http://rouswater.nsw.gov.au)

## BALLINA WASTE WATER TREATMENT PLANT GOES SOLAR

Ballina Waste Water Treatment Plant (WWTP) is now home to the largest bank of solar panels in regional NSW. Council has recently installed some 1200 panels to power the plant. These panels will be switched on in December 2014.

This plant is the first in Australia to be commissioned with these highly anticipated new inverters.

The system has been designed to produce (conservatively) 466,000 kiloWatt hours per annum (466 MegaWatt Hours), which equates to approximately 414,740 kg in reduced CO<sub>2</sub> emissions per annum. This would be roughly equal to removing 60 average houses from the grid.

The new solar PV system is expected to provide approximately \$9,500 a month in savings at current rates.

The system is expected to pay for itself in approximately 10 years based on modest electricity price increases and once payback has been reached the system should generate enough electricity in its lifetime to save Council in the vicinity of a further \$2,000,000 - \$2,500,000 based on modest electricity price increases.



BALLINA SHIRE COUNCIL'S

## PRESSURE AND LEAKAGE Management Plan

If you see Council staff members digging for water pipes around town over the next few months, the work is part of Ballina Shire Council's plan to reduce water loss.

The plan is to divide the Shire into different water zones so that Council can:

- > More quickly locate and fix leaks and breaks
- > Reduce unnecessarily high water pressure

Changes to traffic conditions may occur and anyone affected by water interruptions will be contacted directly by Council.

For more information please phone the Water Group on 6686 4444





New equipment has now been installed at the Marom Creek Water Treatment Plant which supplies drinking water to the Wardell community and is now ready to be switched on! Once final checks have been carried out by state government agencies, Wardell will be the first place in Ballina Shire to receive fluoridated water.

Residents connected to the Wardell water system who are currently taking fluoride tablets should stop taking these tablets. Other residents do not need to do anything in preparation for fluoridated water, when the change is implemented residents should not notice any difference in taste or water quality. For residents who would prefer not to use fluoridated water, reverse osmosis units can be purchased through specialist suppliers.



Ballina Shire Council is looking to save 120,000 kilolitres of water per year by replacing one of its oldest water mains. Tenders have now been called for the new 4.5 kilometre water pipeline will begin at Smith Drive industrial area in West Ballina and go through to Uralba.

Construction of the pipeline will commence in February 2015 and is expected to take several months. There may be some temporary disruptions to water services during the construction phase, and Council will inform residents when this is likely to occur.

*For more information on the project, please contact the Water Group on 6686 4444.*



Ballina Shire Council was represented in the Grand Street Parade at the Ballina Prawn Festival in November. Crystal the Water Drop was escorted in a beach buggy and teamed with local dancers to educate people about recycled water.

Crystal's message is about water conservation and reminding the community of the new recycled water scheme and the many benefits of using recycled water.





## RECYCLING

YOU SHOULD BE PUTTING AS MUCH OF THE FOLLOWING AS POSSIBLE:

- Glass
- Aluminium Cans
- Steel Cans
- Paper and Cardboard
- Hard Plastic



**Golden Rule:**  
No plastic Bags



## FOOD ORGANICS & GARDEN WASTE

YOU SHOULD BE PUTTING AS MUCH OF THE FOLLOWING AS POSSIBLE:

- Garden Waste
- Kitchen Scraps



**Golden Rule:**  
No plastic Bags



## GARBAGE

YOU SHOULD BE PUTTING AS LITTLE AS POSSIBLE INTO THIS BIN AS IT GOES INTO LANDFILL



**Golden Rule:**  
Make sure your waste cannot go into another bin

## BALLINA WASTE FACILITY CHANGE OF HOURS – JANUARY 2015

From 2 January 2015 the Ballina Waste Facility's opening hours will change to 8am to 4pm, Monday through to Sunday.

For more information visit [ballina.nsw.gov.au](http://ballina.nsw.gov.au) or call the Ballina Waste Facility on 6686 1287.





## Council is Vigilant about Asbestos



Ballina Shire Council recently took out a Local Government Excellence in the Environment Awards for our Asbestos Management Program.

The awards are run every year by Local Government NSW to recognise the outstanding achievements of NSW Councils in managing and protecting the environment.

Council was the winner of the Asbestos Management Award (Division B) for its multi-pronged approach to assist staff, developers, fire fighters and the wider community to manage the potential exposure and disposal of asbestos.

Unfortunately roadside or other dumping of material is also an issue with Council staff usually left with the job to clean-up. As part of Council's ongoing vigilance to tackle asbestos, a fully equipped trailer has been developed to respond to such instances.

The asbestos trailer has enough equipment to outfit extra emergency personnel or to respond to multiple incidents on the same trip. Signs and bollards and safety equipment to warn the public of the presence of asbestos are included, as well as clean up equipment and personal protective clothing. The trailer is also used for the routine replacement of water mains that contain asbestos.

### 50% OFF Disposal Fees

# ASBESTOS

## Householder Disposal Scheme

**Ends 30 June 2015. Conditions apply**

Householder Kits available from Council

For more information visit [www.newwaste.org.au](http://www.newwaste.org.au)  
or contact Ballina Shire Council 02 6686 4444

This project is a NSW EPA Waste Less, Recycle More initiative funded from the waste levy.

## HOUSEHOLDER ASBESTOS DISPOSAL SCHEME

Ballina Shire Council is half-way through a 12-month regional trial of the Householder Asbestos Disposal Scheme (HADS). In collaboration with six Northern Rivers Councils and North East Waste (NE Waste) the scheme is part of the State Government's commitment to reduce illegal dumping and enhance waste services across New South Wales.

Residents thinking of renovating their homes and disposing of asbestos are urged to participate in the Scheme. Residents can dispose up to 5 tonnes, once only. Householders disposing of less than 10 square metres are able to take advantage of the Householder Asbestos Kit.

Kits cost \$120 and include safety gear, bags, asbestos removal instructions and access to the disposal subsidy. Kits can be collected from the Waste Management Centre at 167 Southern Cross Drive, Ballina.

For more information visit [newwaste.org.au](http://newwaste.org.au) or contact Ballina Shire Council on 6686 4444.

## STOP ILLEGAL RUBBISH DUMPING

**The illegal dumping of household and garden waste as well as building and commercial rubbish is a continuing problem in the Ballina Shire. It has significant ramifications for public health and safety and for the environment. So far this year there have been more than 100 reported cases of illegal dumping in the Ballina Shire.**

Illegal dumping pollutes our waterways, neighbourhoods and bushland. Garden waste is also a huge problem spreading weeds into the environment, as well as creating a fire hazard. Council has to clean up and dispose of the illegally dumped waste and investigate each incident. This is time-consuming and costly.

Ballina Shire Council and North East Waste have launched a campaign targeting illegal dumping on the north coast. The campaign involves TV, newspaper and radio advertising to raise awareness of the costs to the community of illegal dumping and the launch of a dedicated website.

Penalty Infringement Notices (PINs) of up to \$1,500 for individuals and \$5,000 for corporations apply to those caught illegally dumping. Offences under the Protection of the Environment Operations Act can reach up to \$250,000 and possible jail time.

*If you see someone dumping rubbish illegally please record some details and report the incident to Council on 6686 1210. Alternatively, go to [illegaldumping.com.au/report.html](http://illegaldumping.com.au/report.html) or Council's website [ballina.nsw.gov.au](http://ballina.nsw.gov.au) and provide as much detail as possible.*







# What to do during the *School Holidays*

Looking for something to do with the kids or grandchildren over the school holidays? There's something to satisfy all interests including educational, sporty and creative activities to keep the kids entertained.

## EDUCATIONAL

### Australian Seabird Rescue Tours

Tours start 5 January, \$5 entry fee 10am to 11am, Monday to Fridays during school holidays 264 North Creek Road, Ballina Ph: 6686 2852 Email: [admin@seabirdrescue.org](mailto:admin@seabirdrescue.org) [seabirdrescue.org](http://seabirdrescue.org)

### Ballina Library

Storytime for 2-5yrs 11am, Tuesdays & Fridays Range of craft activities – bookings essential 8 River Street, Ballina Ph: 6686 2831 Email: [rtrl@rtrl.nsw.gov.au](mailto:rtrl@rtrl.nsw.gov.au) [rtrl.nsw.gov.au](http://rtrl.nsw.gov.au)

### Lennox Head Library Workshop

Range of craft activities for the young ones age 5+. Classes start at 11am and bookings are essential. 12 Jan Decorate Mini House 15 Jan Decorate Calico Bag 19-23 Jan Paper Crafts Lennox Head Cultural & Community Centre Ph: 6687 6398 Email: [rtrl@rtrl.nsw.gov.au](mailto:rtrl@rtrl.nsw.gov.au) [rtrl.nsw.gov.au](http://rtrl.nsw.gov.au)

### Ballina Naval & Maritime Museum

Explore the history & enjoy the extensive displays 9am to 4pm, Open 7 days Regatta Avenue, Ballina Ph: 6681 1002 [ballinamaritimemuseum.org.au](http://ballinamaritimemuseum.org.au)

### Crawford House Museum

Enjoy local history and displays in an original farmhouse Open: Fridays 10am to 4pm and Sundays 1pm to 4pm 10 Wardell Road, Alstonville Ph: 6628 5457 Email: [info@aphsmuseum.org.au](mailto:info@aphsmuseum.org.au) [aphsmuseum.org.au](http://aphsmuseum.org.au)

## FAMILY FUN

### Amaze N Place

Free alpaca feeding every day at 11am plus lattice maze, puzzles, sandpit, cubby house and café Open 10am – 4.30pm Open school holidays only 149 Wardell Road, Alstonville Ph: 6628 6286 [amaze-n-place.com.au](http://amaze-n-place.com.au)

### Ballina Tenpin Bowl

Holiday Special 2 Games for \$14 Glow in the Dark Bowling 12-4pm and after 7pm Open 7 days 16 Clark Street, Ballina Ph: 6686 5342 [ballinatenpinbowl.com.au](http://ballinatenpinbowl.com.au)

### Macadamia Castle

Full program of daily activities, animal feeding & Frog Pod Conservation Research Centre 8am – 5pm, Open 7 days 1699 Pacific Highway, Knockrow Ph: 6687 8432 Email: [info@macadamiacastle.com.au](mailto:info@macadamiacastle.com.au) [macadamiacastle.com.au](http://macadamiacastle.com.au)

### Summerland House Farm

Water spray park, gardens, playground, tractor tours, mini golf, heritage cottage, The Grocer & Café 9am-4pm Open 7 days 253 Wardell Road, Alstonville Ph: 6628 0610 [summerlandhousefarm.com.au](http://summerlandhousefarm.com.au)

### Teven Valley Golf Course

Holiday Special Kids hire clubs free when playing with an adult 8am to dusk, Open 7 days 1684 Eltham Road, Teven Ph: 6687 8386 [tevenvalleygolfcourse.com.au](http://tevenvalleygolfcourse.com.au)

### Thursday Plantation

Enjoy the Verandah Café, Rainforest Walk, Sculpture Garden and Tea Tree Maze Open weekdays from 9am-5pm and weekends from 10am-4pm Gallans Road, Ballina Ph: 6620 5150 [thursdayplantation.com](http://thursdayplantation.com)

### Ballina Fair Shopping Centre Reptile Displays of Australia

10am-3pm Wednesday 21 – Saturday 24 January 2015 outside Woolworths Cnr Kerr & Fox Streets, Ballina Ph: 6686 8555 Email: [info@ballinafairshopping.com.au](mailto:info@ballinafairshopping.com.au) [ballinafairshopping.com.au](http://ballinafairshopping.com.au)

### Ballina Fair Cinemas

New release movies Open 7 days Cnr Kerr & Fox Streets, Ballina Ph: 6686 9600 [ballina.info/cinema](http://ballina.info/cinema)

### Cherry Street Sports Club

Tennis Court & Racquet hire, barefoot bowls & daily movies on the outdoor cinema screen Open 7 days Cnr Cherry & Bentinck Streets, Ballina Ph: 6686 2811 Email: [info@cherrystreet.com.au](mailto:info@cherrystreet.com.au) [cherrystreet.com.au](http://cherrystreet.com.au)

### Crystal Castle

Magic gardens, ancient labyrinth and rainforest 10am to 5pm – Open 7 days Closed Christmas and Boxing Days 81 Monet Drive, Mullumbimby Ph: 6684 3111 Email: [info@crystalcastle.com.au](mailto:info@crystalcastle.com.au) [crystalcastle.com.au](http://crystalcastle.com.au)

### Richmond Princess River Cruises

Enjoy morning or afternoon tea aboard the Richmond Princess cruising the Richmond River Bookings Essential Regatta Avenue, Ballina Ph: 1800 777 666 [rrcruises.com.au](http://rrcruises.com.au)

### Lake Ainsworth

Splash in the fresh tea-tree waters Picnic & BBQ facilities available Pacific Parade, Lennox Head

### Victoria Park Nature Reserve

300m boardwalk loop with BBQ and picnic facilities in the picturesque "Big Scrub" remnant. Collect the 30 Great Walks brochure from the Visitor Centre for many more walks in the region. Victoria Park Road, Dalwood Ph: 6627 0200 [nationalparks.nsw.gov.au](http://nationalparks.nsw.gov.au)

### Ballina Memorial Pool and Waterslides

Three pools – toddlers pool, learn-to-swim pool, 50m Olympic pool & two waterslides Monday to Friday 6am to 6pm Saturday 8am to 6pm Sunday & Public Holidays 9am to 6pm 4 River Street, Ballina Ph: 6686 3771

### Alstonville Olympic Pool

Three pools: toddlers pool, learn-to-swim pool, and 50m Olympic pool Monday to Friday 6am to 6pm Saturday 8am to 6pm Sunday & Public Holidays 10am to 6pm Alston Avenue, Alstonville Ph: 6628 0826

### Ballina Fair Swim & Gym

Indoor heated pool One stop training venue Ballina Fair Shopping Centre Ph: 6686 8299

### Ballina Boat Hire

Tinnies or BBQ boats for hire Available 7 days a week 268 River Street, Ballina Ph: 6681 6115 or 0402 028 767

## SPORTY FUN

### Kayak Ballina

Guided Kayak Tours of Ballina's beautiful waterways. Basic skills lesson included Daily – bookings essential Open 7 days Ph: 6681 4000 [kayakballina.com](http://kayakballina.com)





### Tassiriki Ranch Beach Horse Riding

Daily tours  
Open 7 days  
Moylans Road, Empire Vale  
Ph: 6683 4602  
[tassirikiranch.com.au](http://tassirikiranch.com.au)

### Pegasus Park Horse Riding

Daily tours  
Open 7 days  
946 Friday Hut Road, Tintenbar  
Ph: 6687 1446 or  
0428 871 446  
[pegasuspark.com.au](http://pegasuspark.com.au)

### Lennox Head Sport & Recreation Centre

Camp adventure activities  
19–23 January for 7–12yrs  
\$47 per day incl lunch and fun  
Bookings: 6687 7168  
[dsr.nsw.gov.au](http://dsr.nsw.gov.au)

### Circus Arts at Ballina Beach Village

Circus Skills Class \$25 &  
Flying Trapeze \$50 for ages 5+  
23 December 2014 to  
24 January 2015  
Tuesdays & Saturdays  
440 South Ballina Beach Road,  
South Ballina  
Ph: 6685 6566

### Lennox Head Skate Park

Park Lane, Lennox Head

### Missingham Skate Park

Kingsford Smith Drive, Ballina

### Byron Bay Air Charters

Scenic Coastal Flights  
Departs Ballina Byron  
Gateway Airport  
Daily Tours  
Open 7 days  
Southern Cross Drive, Ballina  
Ph: 6686 4876  
Email: [info@byronbayaircharter.com.au](mailto:info@byronbayaircharter.com.au)  
[byronbayaircharter.com.au](http://byronbayaircharter.com.au)

### Classic Aero Adventure Flights

Take a scenic flight in a genuine  
ex-RAAF warbird plane.  
Departs Ballina Byron Gateway  
Airport  
Daily Tours  
Open 7 days  
Southern Cross Drive, Ballina  
Ph: 0432 318 282  
[classicaero.com.au](http://classicaero.com.au)

### The Bicycle Emporium

Hire a retro or fat bike and  
explore the cycleways  
Open 7 days  
Mon–Fri 8.30am – 5.30pm,  
Sat & Sun 9am – 4pm  
158 River Street, Ballina  
Ph: 6681 4054  
[facebook.com/  
TheBicycleEmporium](http://facebook.com/TheBicycleEmporium)

### Sunrise Cycles

Hire a bike and ride along  
the Richmond River  
Mon–Fri 8am–5.30pm  
Sat 8am – 2pm  
3 Hogan Street,  
Ballina  
Ph: 6686 6322  
[facebook.com/  
sunrisecyclesballinabyron](http://facebook.com/sunrisecyclesballinabyron)

### Transition Cycles

Hire a bike and ride along  
the Richmond River  
Mon, Wed & Fri 9am – 5pm,  
Thurs 9am – 5.30pm &  
Sat 9am – 1pm  
49 River Street,  
Ballina  
Ph: 6686 6522  
[facebook.com/  
transitioncyclesballina](http://facebook.com/transitioncyclesballina)

### Surf Lessons with Kool Katz

Learn how to hang ten with  
surf lessons.  
All equipment provided.  
Daily lessons – Open 7 days  
Ballina & Lennox Head  
Ph: 6685 5169  
[koolkatzsurf.com](http://koolkatzsurf.com)

### Surf and Stand Up Paddle

Board Lessons with Mojo Surf  
Learn how to surf or Stand Up  
Paddle board.  
All equipment provided.  
Daily lessons – Open 7 days  
Ballina & Lennox Head  
Ph: 1800 113 044  
[mojosurf.com/products/  
byron\\_bay\\_surf\\_school](http://mojosurf.com/products/byron_bay_surf_school)

### Stand Up Paddle Board

Lessons with Byron Explora  
Learn how to Stand Up Paddle  
Board.  
All equipment provided  
Daily lessons – Open 7 days  
Ballina & Lennox Head  
Ph: 0457 055 024  
Email: [info@byronexplora.com.au](mailto:info@byronexplora.com.au)  
[byronexplora.com.au](http://byronexplora.com.au)

## GET CREATIVE

### Northern Rivers Community Gallery

Various exhibitions and activities  
From Wednesday 8 January  
44 Cherry Street, Ballina  
Ph: 6681 6167

### Kidz Klub at Lennox Head Cultural and Community Centre

7–9, 14–16 and 20–22 January  
\$20 per session per child or  
\$40 per child full day  
Morning, Afternoon or Full Day –  
Bookings essential  
1 Mackney Lane,  
Lennox Head  
Ph: 6687 6291

### Alstonville Dance Studio Holiday School

Summer school  
6–12 January  
Summer workshops –  
Ballet, Jazz, Contemporary, Tap  
and Musical Theatre  
15–18 January  
Ph: 6686 2520 / 0428 748 294

### Riley Burnett Workshops

Various craft and creativity  
workshops  
Bookings essential  
Ballina Street, Lennox Head  
Ph: 6687 5739  
[facebook.com/  
rileyburnettjewellery](http://facebook.com/rileyburnettjewellery)

### Ballina Fair Shopping Centre

Hands on Craft with Polly Esta  
Wednesday 14 to Saturday 17  
January 2015  
Cnr Kerr & Fox Streets,  
Ballina  
Ph: 6686 8555  
Email: [info@ballinafairshopping.com.au](mailto:info@ballinafairshopping.com.au)  
[ballinafairshopping.com.au](http://ballinafairshopping.com.au)

### The Drawing Room

Variety of creative kids summer  
workshops – learn art and craft  
from around the world  
\$30 and bring morning tea.  
Bookings essential to enjoy small  
class sizes  
6 – 15 January 2015  
Ph: Jennifer Collins  
0402 416 782  
Email: [thedrawingroomnorton  
@hotmail.com](mailto:thedrawingroomnorton@hotmail.com)

## EVENTS

### Sanctuary Village Christmas Lights

Christmas lights on display every  
night  
15 to 31 December  
Ross Lane, Lennox Head  
Ph: 6687 6022

### New Years Eve Family Festival

Rides for the kids, live music,  
delicious local food and fireworks  
31 December 5–10pm  
Alstonville Showgrounds  
Ph: Liz Bugden 0428 285 048  
[discoverballina.com.au/events](http://discoverballina.com.au/events)

### Ballina Players Theatre – Alice in Wonderland

Live theatre  
Thursdays to Sundays  
16 – 25 January 2015  
24 Swift Street, Ballina  
Ph: 6686 2440  
[ballinaplayers.com.au](http://ballinaplayers.com.au)

### Girl to Woman Festival

A forum for young women,  
their families and the wider  
community to explore relevant  
issues, learn, share and join in  
the celebration of who they truly  
are. For ages 7+  
Sunday 18 January from 9.30am  
Lennox Head Cultural &  
Community Centre  
Email: [contact@girttowoman.com.au](mailto:contact@girttowoman.com.au)  
[girttowoman.com.au](http://girttowoman.com.au)

*If you are hosting school holiday  
activities contact the Ballina  
Visitor Information Centre on  
telephone 1800 777 666 or email  
[balinfo@ballina.nsw.gov.au](mailto:balinfo@ballina.nsw.gov.au) to  
include your details in the School  
Holiday Activities Program. This  
is made available to visitors via  
[discoverballina.com](http://discoverballina.com)*



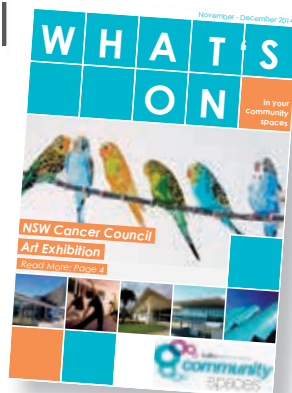


## what's on at your local community facility

Ballina Shire Council provides a diverse range of quality spaces that cater for thousands of bookings every year; from community meetings and events to private functions, recreational classes and corporate seminars. All of these fantastic spaces are available to hire by individuals, community groups, businesses and organisations.

To hire a community space, please contact one of our friendly staff on 6687 6291 or email [communityspaces@ballina.nsw.gov.au](mailto:communityspaces@ballina.nsw.gov.au)

To find out what is happening in your local community space follow our Facebook page, or download a copy of our "What's On" newsletter at [ballina.nsw.gov.au/communityspaces](http://ballina.nsw.gov.au/communityspaces)

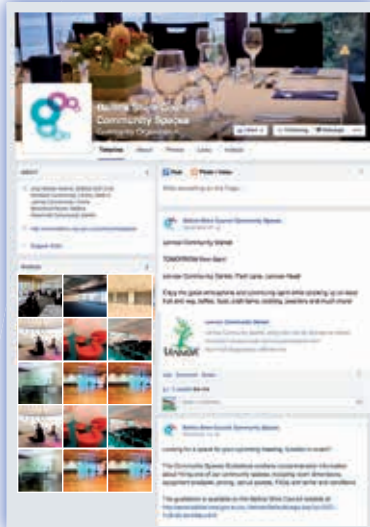


## like us on facebook

Ballina Shire Council Community Spaces is not only about great venues to hire for your function or event.

Every day, across all of our spaces, we host a wide range of classes, activities and events.

To keep up to date with what's happening in your local community, and across the entire Ballina Shire, join us on Facebook to receive all the latest news.



[facebook.com/bsccommunityspaces](https://facebook.com/bsccommunityspaces)



**LENNOX COMMUNITY CENTRE**  
1 MACKNEY LANE, LENNOX HEAD



**KENTWELL COMMUNITY CENTRE**  
20 BANGALOW ROAD, BALLINA



**JINGI WAHLA ROOMS, BALLINA SURF CLUB**  
65 LIGHTHOUSE PARADE, EAST BALLINA



**RICHMOND ROOM BALLINA**  
REGATTA AVENUE, BALLINA



**ALSTONVILLE COMMUNITY CENTRE**  
42-46 COMMERCIAL ROAD, ALSTONVILLE





The Lennox Community Centre is an iconic building located in the heart of the Lennox Head village. The Centre boasts purpose-built meeting spaces, playgroup area, consultation room and multi-use auditorium, that seats up to 550 people for events, as well as catering for a wide range of sports. A fully equipped commercial kitchen with servery enables large scale events to be catered on site, with crockery and cutlery for 200 guests. The Lennox Community Centre is also home to the popular Lennox Head Public Library.

***Perfect for: large-scale community events, conferences, weddings, live performances, meetings and exercise and dance classes***



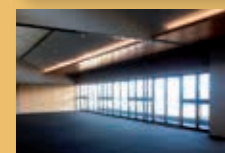
The Kentwell Community Centre is the legacy of Bernice Kentwell, a community-minded lady who was passionate about providing a community-focused space for the Ballina community. Centrally located in Ballina, the modern complex is home to four vital community organisations as well as dedicated interview and meeting spaces that are ideal for a variety of community groups and services.

***Perfect for: consultations, presentations and meetings***



The Jingi Wahla Rooms at the new Ballina Surf Club are spectacularly located on the northern end of Lighthouse Beach and have been designed to ensure their place as one of Ballina's premier function venues. With wall to ceiling glass and a private balcony offering panoramic views of Lighthouse Beach, the Jingi Wahla Rooms are perfect for both small and large, cocktail and banquet-style, events. Equipped with a state of the art audio visual system, the Jingi Wahla Rooms are a popular wedding and party venue, and are also ideal for meetings, presentations and conferences.

***Perfect for: private functions, weddings and conferences***



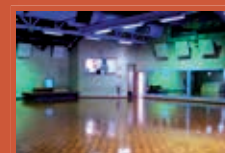
Located in the centre of Ballina, and adjacent to the tranquil Richmond River, the Richmond Room is an popular and affordable medium-to-large scale venue option, featuring a commercial kitchen, stage, built-in PA system and ample parking. The Richmond Room has capacity for 250 theatre style and 150 banquet style.

***Perfect for: dinners, parties, wedding receptions, conferences, trade expos and large-scale meetings***



The Alstonville Community Centre is a prime sporting venue, home to futsal, netball, gymnastics, aikido, physical culture and lifeball. It features a meeting space, multi-function hall and sports hall/auditorium and has ample room for large-scale meetings, expos and conferences. It is also home to the Alstonville Public Library.

***Perfect for: sports, expos and conferences***







arts connect

## current exhibitions

**3 December – 21 December 2014**

Summer Dayz –  
Ballina Art Society Group Exhibition



Julia Drury, *Everything but the Kitchen Sink detail*, 2014

Artworks created by the talented artists of the Ballina Art Society, all with different styles and approaches. Works have been inspired by the tantalising change of seasons as summer approaches, with its colours, excitement, holiday atmosphere and family connections.

**November – December 2014**

Art at the Airport –  
Damien Conte

Ballina Byron Gateway Airport comes alive leading up to our festive season with the vibrant, energetic and colourful works of local artist Damien Conte.

All artworks exhibited in Art at the Airport are available for purchase via the Northern Rivers Community Gallery, Ballina.

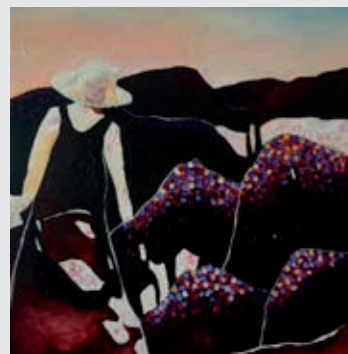


Damien Conte, *Hand Machine detail*, 2014

## upcoming exhibitions

**7 January – 1 February 2015**

Without a Shadow of a Doubt – Valerie Kerr



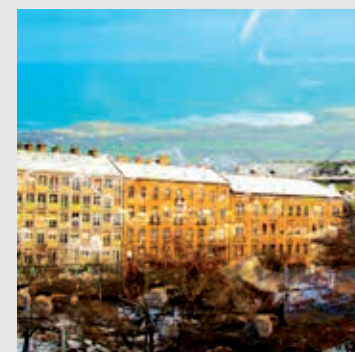
Valerie Kerr, *Christine detail*, 2014

Valerie Kerr's artworks are in response to childhood memories of cloud watching and daydreams of seeing imagined beings in the landscape. This experience is known as Pareidolia; seeing and attributing human qualities where none exist, (or do they?). Kerr, a local from Ballina, is inspired by her childhood memories of growing up in the region of days spent sunbathing, swimming and warm summer evenings.

**7 January – 1 February 2015**

Changing Perspective – Sue Rado

A collection of contrasting images developed by the artist from living in Budapest, Hungary and then returning to the far north coast NSW as a teenager. Rado explores a sense of understanding, belonging and familiarity with her environment – wherever that may be.



Sue Rado, *Flat Rock Meets VIII ker detail*, 2014

gift – hand made this Christmas



Terracotta Cup: Brooke Clunie; Jewellery: Jen Banks



Art Print Card: Alleva Printmaker; Bamboo Printed Tote Bag, buttons and jar: Kambamboo



Retrieved Objects Jewellery: Lucille Atkins

**nrcg**  
northern  
rivers  
community  
gallery

The Gallery shop has a beautiful range of unique hand-made products created right here in the Northern Rivers region perfect for that special Christmas gift. **Open Wed – Fri 10am – 4pm | Weekends 9.30am – 2.30pm (Closed from 22 Dec 2014 – 6 Jan 2015) | Ph 02 6681 6167**





**7 January –  
1 February 2015**

## Blue Italy – Shani Miller

Blue Italy presents a series of 23 Cyanotypes created from digital images taken by the artist during personal travels throughout Italy. These images were created using old (1842) and new photographic technology.



Shani Miller, Fiat detail, 2014



John Walters, Still Life with Avocados detail, 2014

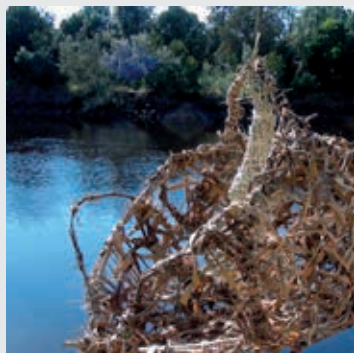
**7 January –  
1 February 2015**  
**PANIQUE – PAN**  
Artists Group Exhibition

Exhibiting together for approximately 14 years, this exhibition represents the wide variety of skills, and passions PAN members employ to create their artworks.

**4 February – 1 March 2015**

## Madonna and the Reed Baskets – Mirra-Winni Gaze

With a passion to protect the land and pass on her skills as a weaver, Indigenous artist Mirra-Winni will be showcasing a delicate but powerful selection of weavings created using natural materials collected while walking in country. Artist run weaving workshops will coincide with this exhibition. Contact the Gallery for further details.



Mirra-Winni Gaze, Madonna in the Reed Basket detail, 2013

**4 February – 1 March 2015**



Narani Henson, Plastic Dot Water and Dot Water detail, 2013

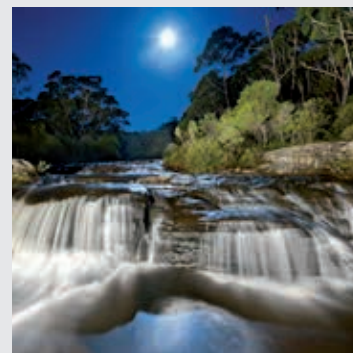
## Flotsam and Jetsam – Narani Henson

This exhibition explores the world wide environmental issue of marine plastic in an intimate way. A collection of weird and wonderful art that has a variety of different mediums and reclaimed materials from flotsam and jetsam. Artist run workshops will coincide with this exhibition. Contact the Gallery for further details.

**4 February – 1 March 2015**

## WetlandCare Australia annual photography prize

This exhibition will showcase the best works from 2008 to 2014, and the winning works in the 2015 WetlandCare Australia Annual Photography Prize. A range of family fun events will coincide with this exhibition including artist run workshops and guided local wetland talks. Contact the Gallery for further details.



Ford Kristo, A Night At The Races detail. People's Choice prize winner and category prize winner, 2014



Robyn Sweaney, By the river detail, 2014

**January –  
February 2015**

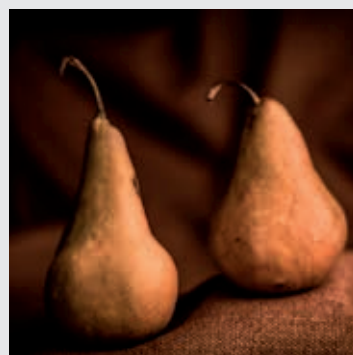
## Art at the Airport – Robyn Sweaney

The often stage-like quality of Sweaney's paintings lean to either romantic or oppressive qualities, depending on your experience. The use of light and how it hits the flatness of the built environment creates a sense of drama and contrast.

**4 March – 29 March 2015**

## The Fifth Annual Grace Cruice Memorial Exhibition – BACCI

Dedicated to Grace Cruice, who had the vision of a community gallery for Ballina, this exhibition showcases the diverse talents of the BACCI group and celebrates their shared passion for creativity.



Mark Davis, Bonnie & Clyde detail, 2014

**nrcg** | northern rivers  
**community gallery**

44 Cherry Street, Ballina NSW 2478

Phone 02 6681 6167 | email council@ballina.nsw.gov.au





## COUNCIL SERVICES OVER CHRISTMAS / NEW YEAR PERIOD 2014/2015

LOCATION	CLOSING	REOPENING
<b>Customer Service Centre</b> <i>For emergencies ph 6626 6954</i>	3.00pm Wednesday 24 December	8.15am Monday 5 January 2015
<b>Libraries</b> Ballina, Alstonville and Lennox Head	3.00pm Wednesday 24 December	9.30am Friday 2 January 2015
<b>Northern Rivers Community Gallery</b>	2.30pm Sunday 21 December	10.00am Wednesday 7 January 2015
<b>Waste Management Centre</b> 167 Southern Cross Drive, Ballina	Closed Christmas Day, Boxing Day and New Years Day only	From 2 January opening hours will be 8am – 4pm. <b>All garbage and recycling service collections remain unchanged.</b> All residents should present bins at kerbside by 5am on their normal collection days, as start times and the order of collection may vary.
<b>Alstonville Swimming Pool</b>	Closed Christmas Day only	6am – 6pm Mon–Fri 8am – 6pm weekends 10am – 6pm public holidays
<b>Ballina Swimming Pool</b>	Closed Christmas Day only	6am – 6pm Mon–Fri 9am – 5pm weekends and public holidays
<b>Burns Point Ferry</b>	12noon Thursday 25 December	5.30am Friday 26 December 2014
<b>Community Spaces</b> Alstonville Leisure and Entertainment Centre Jingi Wahla Rooms: Ballina Surf Club Kentwell Community Centre Lennox Community Centre Richmond Room	12noon Wednesday 24 December	8.30am Monday 5 January 2015

**Don't  
dispose  
of me yet**

Use this issue of Community Connect to wrap kitchen waste and dispose in the green organics bin.

## contacting your councillors

Councillors are here to represent your views.

Councillors may be elected in Wards, however each Councillor represents the entire community and can be contacted on any matter.

You can contact Councillors in person, by phone or email.

### A Ward



**Susan Meehan**  
phone 0431 685 666  
smeehan@ballina.nsw.gov.au

### B Ward



**Sharon Cadwallader**  
phone 0419 973 166  
crsharonc@nor.com.au

### C Ward



**Paul Worth**  
phone 0428 280 082  
pworth@ballina.nsw.gov.au



**Robyn Horder**  
Deputy Mayor  
phone 0410 562 758  
robynh@ballina.nsw.gov.au



**Jeff Johnson**  
phone 0438 677 202  
jeffjohnson@ballina.nsw.gov.au



**Keith Johnson**  
phone 0407 435 573  
kjohnson@ballina.nsw.gov.au

### Mayor



**David Wright – Mayor**  
phone 0415 965 403  
davidwright@ballina.nsw.gov.au



**Ken Johnston**  
phone 0437 601 715  
kenj@ballina.nsw.gov.au



**Keith Williams**  
phone 0418 504 644  
keithw@ballina.nsw.gov.au



**Ben Smith**  
phone 0415 482 412  
bens@ballina.nsw.gov.au

### COUNCIL CONTACT INFORMATION

**Ph:** 02 6686 4444

**Fax:** 02 6686 7035

**Email:** council@ballina.nsw.gov.au

**Web:** ballina.nsw.gov.au

**Street Address:**  
40 Cherry Street, Ballina

**Postal Address:**  
PO Box 450, Ballina 2478

**Office Hours:**  
8.15am to 4.30pm Mon–Fri  
(excluding public holidays)

**After hours contact:**  
02 6626 6954

**Council's Community Access Points:**  
Meeting agendas and documents on exhibition can be viewed at Council's Customer Service Centre; Alstonville, Ballina and Lennox Head Libraries and Council's website  
**ballina.nsw.gov.au**