

# » Lake Ainsworth south eastern precinct project



**On Monday 13 February work will commence at Lake Ainsworth's south eastern precinct to improve the space for future generations.**

The popular recreational area upgrade will include additional barbeques, pathways, picnic tables, formalised parking, erosion rehabilitation and landscaping.

Vehicle access to the eastern road will close indefinitely from Monday 13 February but will remain open for pedestrians during and after the project's completion.

The eastern road will remain accessible for emergency and construction vehicles but vehicles accessing the Sport and Recreation Centre will need to use Camp Drewe Road on the western side of Lake Ainsworth.

The \$1.7M investment and road closure was resolved by Council at the Wednesday 25 January meeting. The project is set to improve the overall amenity of the south eastern precinct, increase the areas available for recreational use and improve the environmental outcomes through enhanced stormwater management systems.

By closing the eastern road people using this location will be able to spend time enjoying the Lake and the surrounding amenity without the inconvenience and inherent risk associated with vehicles moving through the precinct.

To date we have completed the upgrade to Ross Street (road reconstruction, road widening and carparking), along with providing additional carparking in Pacific Parade opposite and adjacent the Lennox Head - Alstonville Surf Life Saving Club.

The project will consist of three distinct stages of work that will be carried out across 2017.

## » **Stage 1: eastern road precinct**

Stage one will commence following the road closure on Monday 13 February along the eastern road precinct, and will comprise of water main relocation followed by path construction and landscaping. The path will be completed in sections to ensure the space is still accessible and usable for pedestrians. The additional amenities will enhance the precinct for relaxation and recreation.

- closure of the Lake Ainsworth eastern road to vehicles
- 3m wide accessible pathway
- BBQ facilities and picnic areas
- sandstone block seats amongst some open spaces
- increased grassed areas
- improved stormwater quality management systems
- restoring and revegetating of the eroded foreshore areas

**Timeline to commence:** Monday 13 February 2017 with substantial completion by 7 April 2017

**Budget:** \$800,000 including Stage 3

## » **Stage 2: southern road precinct**

The second stage is expected to commence from 26 April 2017, being after Easter and the school holiday period, and will introduce additional parking for Lake visitors.

- formalisation of the carpark to create additional parking
- restoration and revegetation of the eroded foreshore areas

**Timeline to commence:** Wednesday 26 April 2017 with substantial completion by 23 June 2017

**Budget:** \$900,000

## » **Stage 3: roundabout construction**

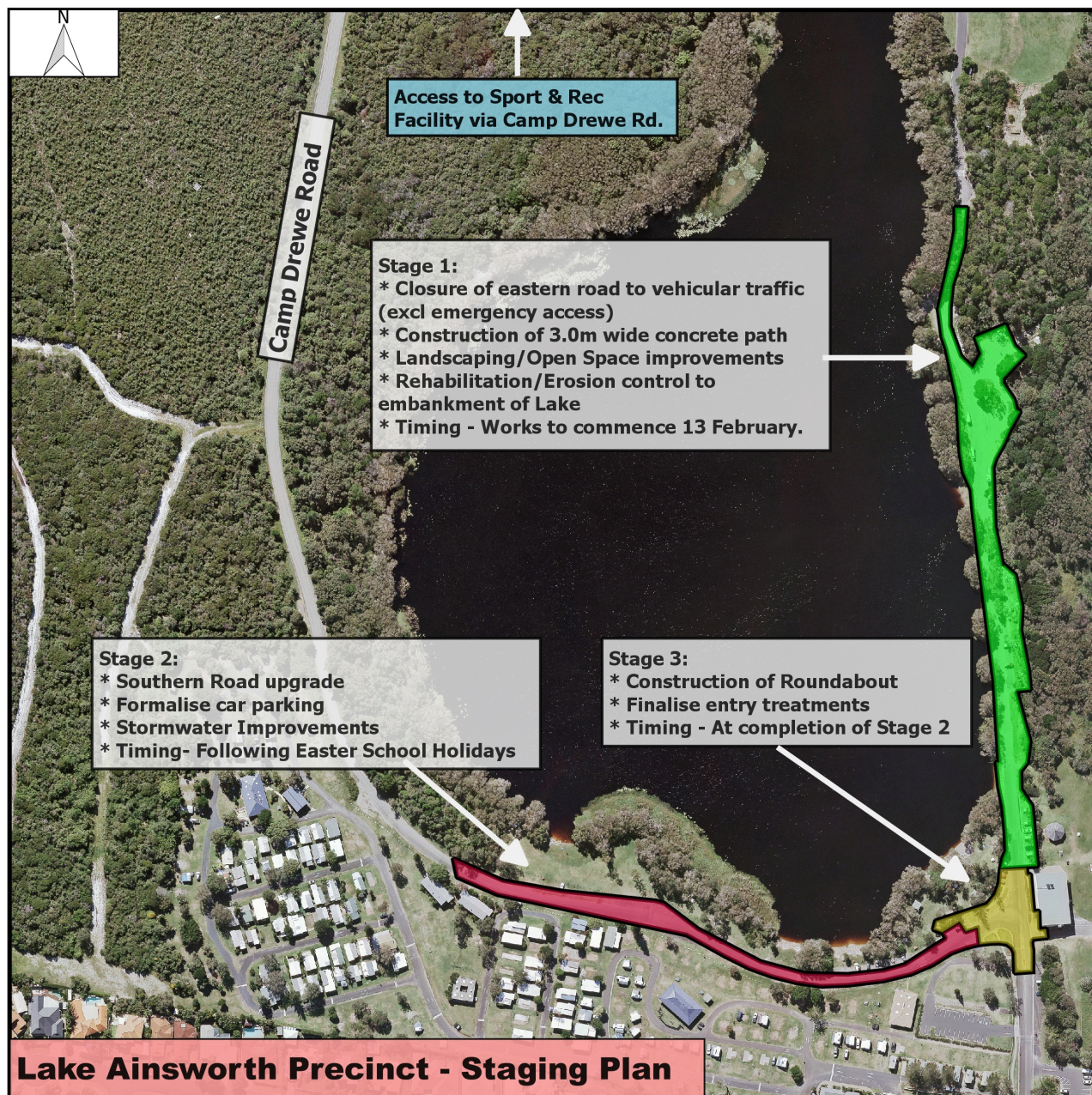
The third stage is expected to commence from 26 June 2017 and will ensure better traffic flow.

- roundabout construction adjacent to the Lennox Head - Alstonville Surf Life Saving Club
- architectural features for road and path surfacing

**Timeline to commence:** 26 June 2017 with substantial completion by early August 2017

**Budget:** Included with Stage 1





## » FAQs

### ***How much carparking will be provided?***

The loss of carparking along the eastern road has been replaced with formalised parking on Ross Street (31 spaces) and the carpark across the road from the Lennox Head - Alstonville Surf Life Saving Club (LHASLSC) provides 58 spaces. The reconstruction of the southern road will provide additional grassed car spaces, similar to the recent extension of the carpark across the road from the LHASLSC, with an estimate of 70 more spaces.

### ***How do I access the off-leash dog area on Seven Mile Beach?***

Dog owners are encouraged to access the dog off-leash area on Seven Mile Beach north of the LHASLSC. However, the eastern road will remain open for pedestrian access wherever possible during construction. In this area dogs must be

restrained on a leash until the designated off-leash area of Seven Mile Beach.

### ***How do I access the Lake if I use a wheelchair or scooter?***

The eastern road will remain open for pedestrian access during construction. Disabled carparking is available at the carpark adjacent to the LHASLSC.

### ***How do I access the Sport and Recreation Centre and Camp Drewe?***

Vehicle access will be via the western road - Camp Drewe Road.

### ***How long will the project take?***

From the eastern road closure from 13 February 2017 and is expected all three stages of the project will be completed by early August 2017.

## » ***If you have any questions please contact:***

**Ballina Shire Council, Civil Services Group ph 6686 4444**  
**To view the full concept plans visit Council's website**  
**[ballina.nsw.gov.au](http://ballina.nsw.gov.au) (search Lake Ainsworth)**

