

CHERRY STREET  
(BETWEEN RIVER AND TAMAR STREETS)

THE RATIONALE

*To enhance and enliven the existing streetscape in keeping with the other upgrades that have occurred in the town centre. Proposals for this section of Cherry Street seek to:*

- *rationalise the extent of bitumen area and dedicate what is not needed for traffic and car parking to pedestrian movement and streetscape enhancements;*
- *create a green, shaded environment that encourages visitation and participation in town life and provides relief from hard surfaces and built infrastructure;*
- *provide opportunities for alfresco dining as an additional capability for food outlets and as a way of enlivening the streetscape;*
- *providing opportunities for meeting and greeting on the streetscape through shaded seating areas;*
- *provide car parking appropriate to the intended use of the street;*
- *add to the visual amenity of the Ballina town centre.*

THE PROPOSALS

**Rationalise the extent of bitumen and create a pedestrian friendly streetscape**

Cherry Street, between River Street and Tamar Street, is a wide street with no street trees and a narrow concrete pavement. The street in its current form is drab and hot. The street has great potential with its strip shops, broad awnings and interesting shop fronts. It is proposed the road is narrowed and car parking reconfigured to allow for a wider pedestrian pavement that can be designed for a range of uses. A wider pavement will provide for better pedestrian movement, opportunities for streetscape furniture and seating areas, street tree planting and potential alfresco dining.

**Create a ‘green’ attractive streetscape that encourages activity**

A wider pavement would allow space to plant new street trees that can grow up beyond the shop awnings. Shade trees would enhance the visual amenity of the street and provide shade for pedestrians and to car parking. The streetscape could also incorporate low gardens that would add to the visual amenity of the street. Consider the provision of temporary shade structures until planted street trees become established and generate adequate shade.

**Provide opportunities for alfresco dining**

The widened pavement would allow for pedestrian movement along the shop front with potential alfresco dining areas to be located to the outside of the pavement. The new street trees would provide shade to these dining areas.

It is proposed the car parking is reconfigured as ‘nose-in’ parking. This means that exhaust fumes from rear parking cars are not being directed over outdoor diners. ‘Nose-in’ car parking is also consistent with the River Street approach to parking.

It is proposed there is some separation provided between the alfresco dining areas and parking. This could be in the form of decorative low walls or balustrades set in low gardens. Some access needs to be provided from parking to the pavement and this should be strategically located away from the dining locations.

**Provide opportunities for socialising on the street**

The addition of street trees and gardens to the street will enhance the street. The widened pavement would provide opportunities to add seating locations along the street. Seats should be located near shade trees and could be actual seats or low walls. Street furniture could be artworks e.g funky bike racks, carved seats, low walls with artistic elements. The design of the street should enhance the interesting qualities of the existing shop fronts e.g. traditional tiling and articulated display windows.

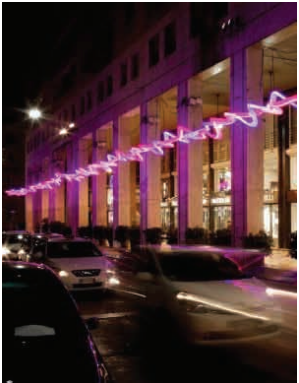
Informal public gathering spots should be separate from commercial premises so that meeting and greeting is not restricted to a commercial outlet. Socialising and gathering is to be encouraged by the design of the streetscape and will enliven the character of the CBD.

**Add to the visual amenity of the Ballina Town Centre**

River Street, in the town centre, has already been upgraded. Streetscape upgrades to Cherry Street should reflect these upgrades so there is some consistency across the town centre. However, opportunities to add some unique qualities or quirky aspects could be considered so the Cherry Street environment is not just a sterile place that could be anywhere. Maybe some points for inspiration could be the presence of the pub on the corner or the traditional butchery that still exists on the street. These could provide inspiration for artworks that are set within the street.

**CBD lighting**

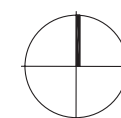
Incorporate lighting into this upgraded section of Cherry Street and other CBD streets to create a unique character to the CBD and to define it as one of the activity centres of Ballina. Lighting could be stand alone lights, lights in the ground plane, illuminated artwork installations and suspended lighting across the road and the pavement.



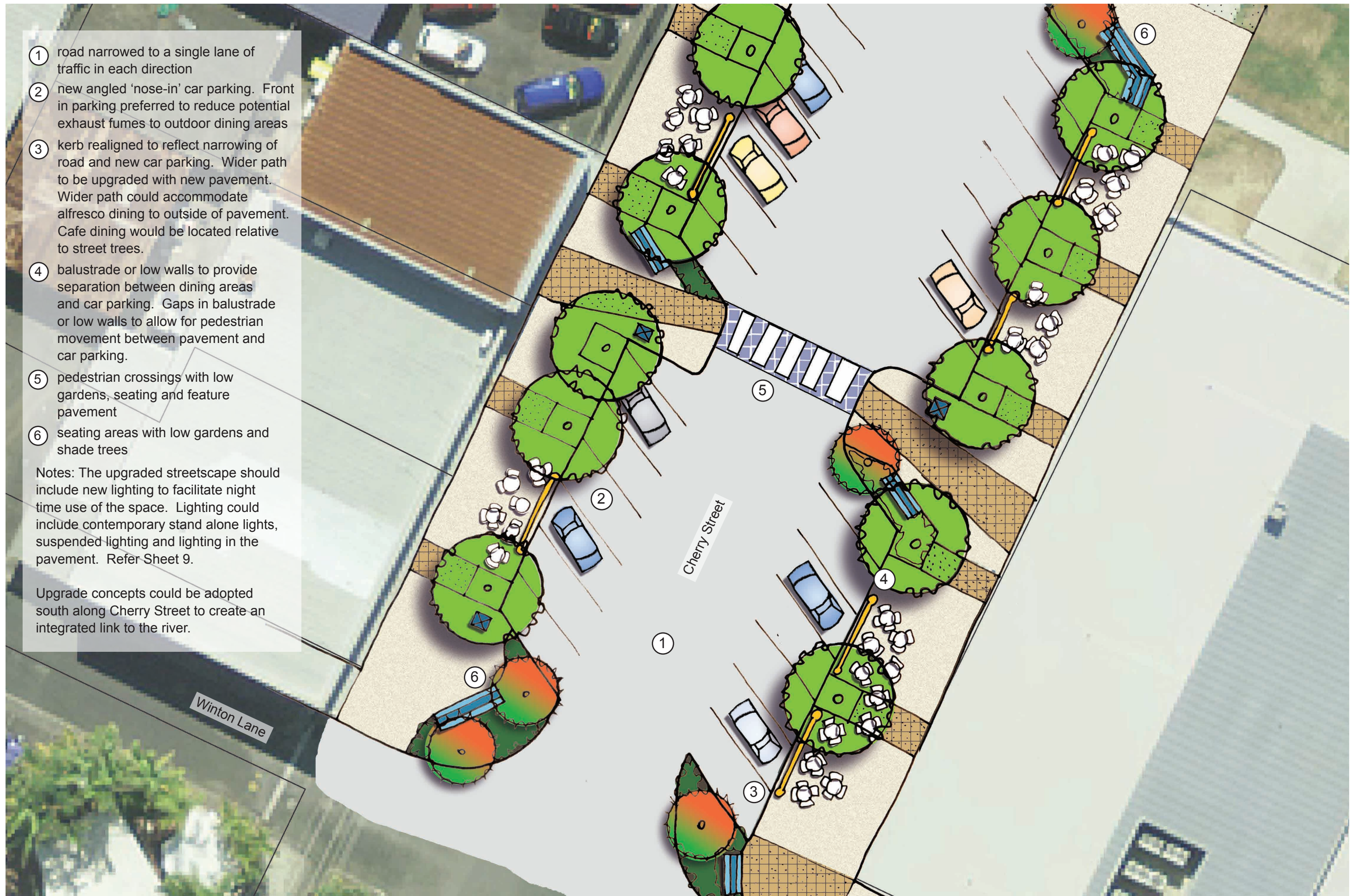




- ① road narrowed to a single lane of traffic in each direction
- ② new angled 'nose-in' car parking. Front in parking preferred to reduce potential exhaust fumes to outdoor dining areas
- ③ kerb realigned to reflect narrowing of road and new car parking. New wider path to be upgraded with new pavement, new street trees and streetscape furniture
- ④ shaded seating areas along street. Potential to include seating walls and public art elements.
- ⑤ new wider pavement would accommodate alfresco dining to outside of pavement. Cafe dining could be located relative to street trees.
- ⑥ pedestrian crossings with low gardens, tree planting and seating
- ⑦ provide fixtures for removable bollards to allow for occasional street closure for special events
- ⑧ consider contrasting pavements to highlight pedestrian priority areas and to slow traffic







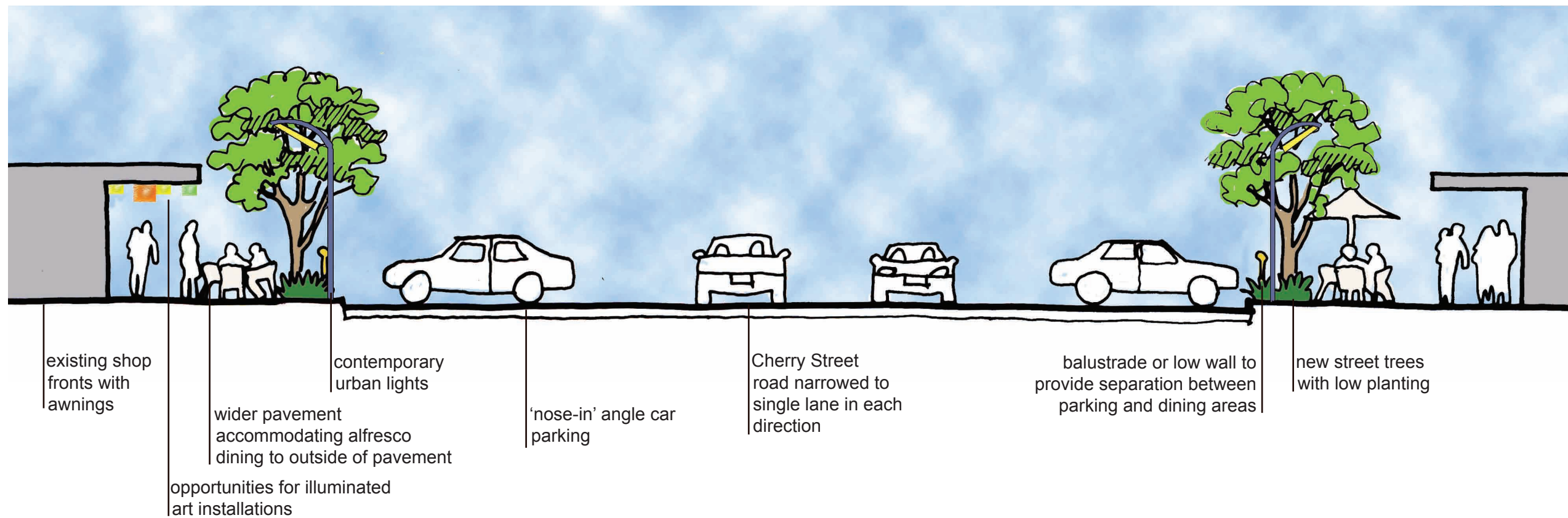
- ① road narrowed to a single lane of traffic in each direction
- ② new angled 'nose-in' car parking. Front in parking preferred to reduce potential exhaust fumes to outdoor dining areas
- ③ kerb realigned to reflect narrowing of road and new car parking. Wider path to be upgraded with new pavement. Wider path could accommodate alfresco dining to outside of pavement. Cafe dining would be located relative to street trees.
- ④ balustrade or low walls to provide separation between dining areas and car parking. Gaps in balustrade or low walls to allow for pedestrian movement between pavement and car parking.
- ⑤ pedestrian crossings with low gardens, seating and feature pavement
- ⑥ seating areas with low gardens and shade trees

Notes: The upgraded streetscape should include new lighting to facilitate night time use of the space. Lighting could include contemporary stand alone lights, suspended lighting and lighting in the pavement. Refer Sheet 9.

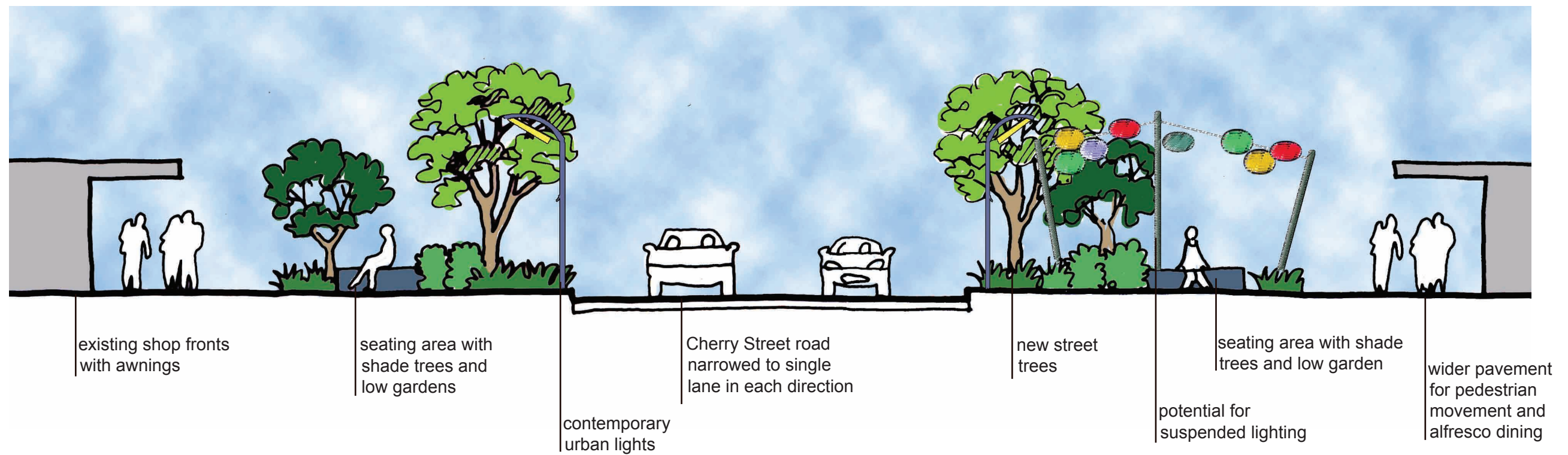
Upgrade concepts could be adopted south along Cherry Street to create an integrated link to the river.







**D** CHERRY STREET ALFRESCO DINING



**E** CHERRY STREET SEATING AREAS