



Community Announcement

25 May 2018

Roadworks -Temporary Closure of Houghlahans Creek Road, Teven

Ballina Shire Council wishes to advise that a section of Houghlahans Creek Road will be closed for roadworks from **Monday 4 June until Friday 15 June 2018** (weather permitting).

The section of road to be closed is adjacent to No. 325 Houghlahans Creek Road.

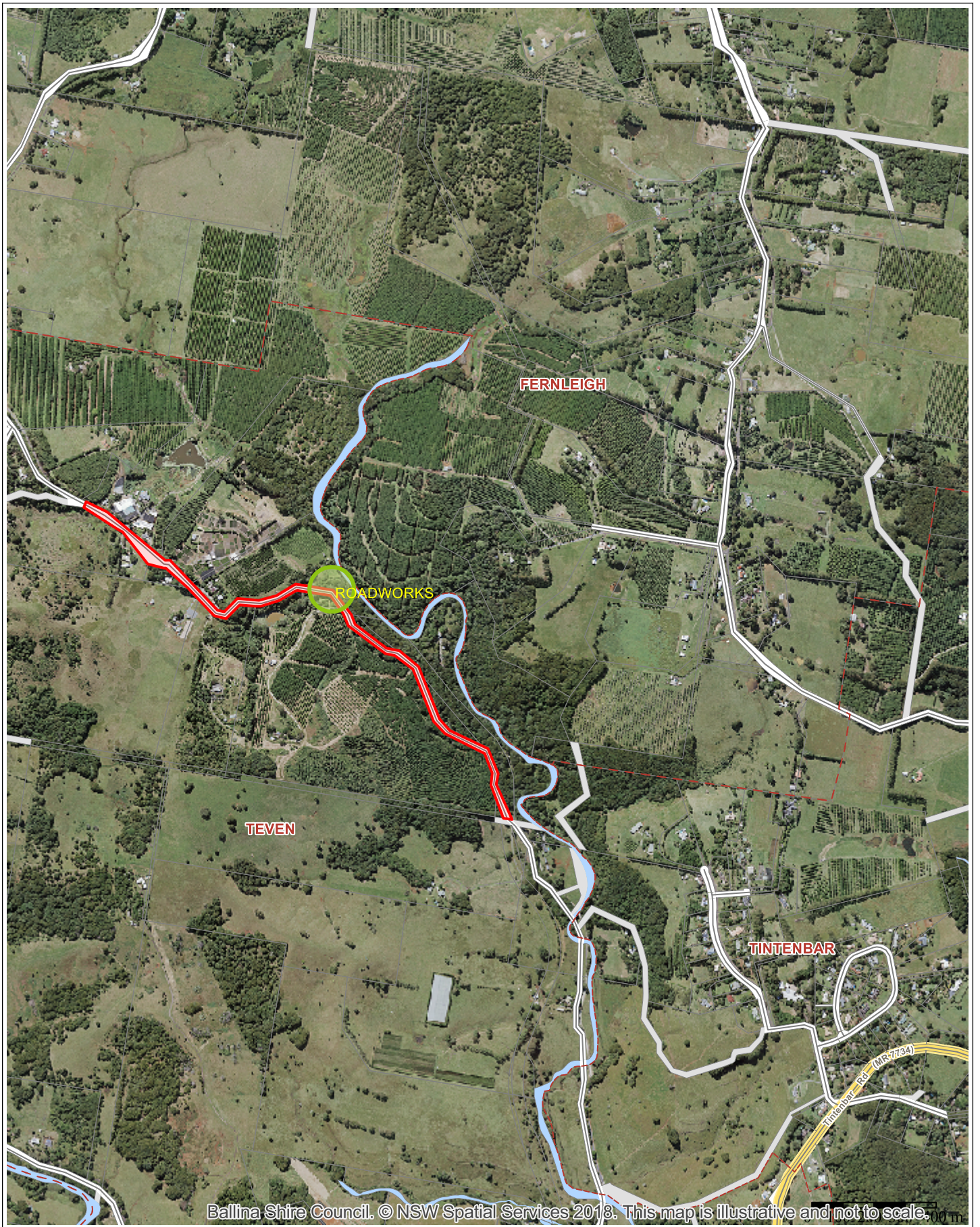
Roadworks will include the replacement of a culvert and headwalls. Storm damage restoration work will also be undertaken near this location.

Traffic control and detours will be in place. Motorists will be detoured via Eltham Road.

Once works are underway, Council appeals to motorists to obey all changes in traffic conditions and comply with safety signage.

To keep up-to-date with road closures and cautions due to roadworks and flood events visit ***MyRoadInfo.com***.

Authorised By	John Truman Group Manager Civil Services	Media Spokesperson	Stuart Hynes Road Assets Engineer 1300 864 444
Distribution	Local Media		



Ballina Shire Council. © NSW Spatial Services 2018. This map is illustrative and not to scale.

Ballina Shire Council
40 Cherry Street
BALLINA NSW 2478

PO Box 450
BALLINA NSW 2478

1300 864 444
council@ballina.nsw.gov.au
www.ballina.nsw.gov.au



© Ballina Shire Council © NSW Spatial Services 2018
While every care is taken to ensure the accuracy of this product, Ballina Shire Council and the Local / State / Federal Government departments and Non-Government organisations whom supply datasets, make no representations or warranties about its accuracy, reliability, completeness or suitability for any particular purpose and disclaims all responsibility and all liability (including without limitation, liability in negligence) for all expenses, losses, damages (including indirect or consequential damage) and costs which you might incur as a result of the product being inaccurate or incomplete in any way and for any reason.

ballina shire council
geographical information system

Projection: GDA94 / MGA zone 56
Date: 18/05/2018