

communityconnect

the magazine of ballina shire council

your new council

Welcome to new councillors **Phillip Meehan, Stephen McCarthy, Nathan Willis, Sharon Parry and Eoin Johnston**. We hope they will find their roles very rewarding.

There are some familiar faces back in the Council Chambers with **David Wright** returning as Mayor, and **Jeff Johnson, Sharon Cadwallader, Keith Williams and Ben Smith**. We bid farewell to Keith Johnson, Robyn Hordern, Sue Meehan, Ken Johnston and Paul Worth who served the Ballina Shire community for many years.

Councillors are elected in Wards, however each Councillor represents the entire community and can be contacted on any matter. You can contact Councillors in person, by phone or email. Their details are listed below.

	Cr David Wright phone 0415 965 403 david.wright@ballina.nsw.gov.au	MAYOR
	Cr Keith Williams phone 0418 504 644 keith.williams@ballina.nsw.gov.au	WARD B
	Cr Phillip Meehan phone 0408 349 833 phil.meehan@ballina.nsw.gov.au	WARD A
	Cr Jeff Johnson DEPUTY MAYOR phone 0407 651 948 jeff.johnson@ballina.nsw.gov.au	WARD B
	Cr Stephen McCarthy phone 0407 841 149 stephen.mccarthy@ballina.nsw.gov.au	WARD A
	Cr Sharon Parry phone 0408 683 052 sharon.parry@ballina.nsw.gov.au	WARD C
	Cr Nathan Willis phone 0434 154 782 nathan.willis@ballina.nsw.gov.au	WARD A
	Cr Benjamin Smith phone 0415 482 412 ben.smith@ballina.nsw.gov.au	WARD C
	Cr Sharon Cadwallader phone 0413 091 440 sharon.cadwallader@ballina.nsw.gov.au	WARD B
	Cr Eoin Johnston phone 0407 416 149 eoin.johnston@ballina.nsw.gov.au	WARD C

Alstonville 2036



Sonny Bill Williams



Road Projects



Aboriginal Cultural Ways



our *vision*

serving the
community
of today while
preparing for the
challenges of
tomorrow

contents

engaged leadership

From the Mayor's Desk	3
Alstonville Strategic Plan Community Feedback	4-5
Work starts on new plan for pedestrians	6
Marine Rescue Tower project update	6
Motorcycle safety	7
Parking and school zones	7
Buying a 4WD permit	7
Ballina Shire Local Emergency Management Plan (EMPlan)	8
Dog reunited with owner thanks to microchip	8
Bitumen Reseal Program 2016 – 17	8
Road Projects	9
2012 – 2016 Progress Milestones	10-11

prosperous economy

Ballina Coast & Hinterland	12
Ballina Byron Gateway Airport	13
Ballina Marina Master Plan	14
Ballina Shire Economic Opportunity Innovation & Activation Strategy	14
CBD Roundabout Public Art Project	14
Around the Business Chambers	15

connected community

Nominate your local hero for a 2017 Australia Day Award	16
Aquarius Barrier Discontinued – Seven Mile Beach, Lennox Head	16
Aboriginal Cultural Ways Interpretative Signage Project	17
Pixel the Past: Ballina Shire Community Heritage Digital Mentorship Program	17
Kings Court Park	17
Dive into Summer this swimming season	18
Ballina and Alstonville pools redevelopment update	19
Swimming pool season – time to check your fence	19
Community Spaces	20-21
Market Calendar	21
Community Events – What's On?	22-23
Arts Connect – Northern Rivers Community Gallery	24-25

healthy environment

Protect our waterways	26
Local plumber fined for illegal works	26
Wild dogs in your area?	26
Illegal use of your property	26
Protecting your public health – Nail Treatments	27
Let's talk about...your septic tank	28
There's no such thing as a dog poo fairy	28
Water Talk – Issue 34	29
Waste Watch – Issue 14	30-31
Feature film shot in Ballina premieres in October	32



from the mayor's desk

A new term of Council is about to begin. There will be the familiar faces of Councillors: Ben Smith, Jeff Johnson, Keith Williams and Sharon Cadwallader plus new Councillors: Phil Meehan, Stephen McCarthy and Nathan Willis in 'A' Ward and Eoin Johnston and Sharon Parry in 'C' Ward.

I congratulate all who were elected and now we need to work as a team so that Council can continue to deliver improved facilities, infrastructure and services to our Shire.

During the pre-poll and on election day, many people asked for small things to be done by Council that would improve their amenity and safety for others. Many of these have been followed up already. If you have a problem with footpaths, vegetation or similar, please contact the Council. Our staff deal with in excess of 10,000 requests per annum and the majority of matters are dealt with in a few days.

On behalf of all candidates for the election, I thank all the volunteers who letter boxed dropped or handed out over the eleven days of pre-poll and election day. The support, respect and comradery that was shown was amazing with many candidates and their helpers, handing out How to Votes for other candidates if someone went to lunch or had to leave early.

I also want to thank our local businesses who supplied printing and advertising for everyone. Their professionalism and quality of service was amazing and I encourage readers to use our local first-class operators. Ballina also has amazing coffee vans who come just when they're needed.

Working for the community is a difficult task that requires great energy, a great deal of time but little financial reward. The last term of Council delivered major infrastructure and hopefully, the next four years will be the same.

I was recently invited to a welfare meeting with representatives of local welfare agencies to an information meeting detailing the community welfare facilities available at the existing drop-in centre of the Kentwell Community Centre and other facilities in Ballina.

It was reported, that at any time there are up 300 homeless people sleeping on the streets, in cars, or in some of the limited accommodation available. The representatives recognised that there needs to be a better way of communicating with those in need to provide information about the centres that provide meals, showers and washing facilities as well as a place to sleep.

If you or your group would like to join in providing support for the homeless, please contact the FSG office staff at the Kentwell Community Centre.

Councillors at their first meeting decided to approach the NSW Government to seek funding for the development of an ocean pool. Council will also request that the NSW Government, as a matter of urgency and as an additional part of the Shark Mitigation Strategy, provide a 50% rebate for local surfers to purchase electronic shark deterrents.

Vale: Jodie McRae who passed away peacefully in her home after a long and courageous fight. Our deepest sympathies to her family and friends. Her legacy continues with Jodie's Inspiration Charitable Foundation to raise funds to purchase medical equipment for Lismore's oncology units. jodiesinspiration.com.au

our values

creative

accessible

respectful

energetic

safe



ALSTONVILLE STRATEGIC PLAN COMMUNITY FEEDBACK

Thanks to all those who have responded to us so far – it's been lovely meeting so many committed community members.

A few themes have been quite common in the feedback we have received. These have been loosely grouped below:

The 'feel' of Alstonville

People love the natural environment, the quiet and the small village atmosphere. Alstonville is seen as friendly and welcoming for newcomers and as a family place.

Agriculture is important, and we shouldn't lose the opportunities it provides

Many people commented on the fertile soils surrounding Alstonville and the importance of retaining productive capacity for agriculture.

Some level of support for further development

At this stage about 60% of submissions have suggested there is limited scope for further development, either by intensification of densities in some parts of Alstonville or through extension of the urban area.

Day tourism

Some people see Alstonville as a day destination for tourism. In the words of one person "Day tourism is the new weekend away" and Alstonville could provide this kind of destination.

Walking paths and cycling routes were also suggested in relation to tourism, drawing on the beautiful scenery close by.

Flexible Housing Options

A number of people told us that they were currently living in a large family home on a suburban block but that their children had moved away and they would like to be closer to the village centre. People suggested they didn't want a tiny home, but they wanted to live in a 3 bedroom townhouse style home with some backyard. Many of those providing feedback on this topic suggested they were happy to live in closer quarters with other residents and would like to walk into town along level footpaths.

Some respondents spoke specifically about providing different styles of housing dependent on proximity to the village centre to cater for all age and ability groups, as well as keeping housing affordable.

Some respondents, even those who support a no-growth option, saw



a possible increase in density in close proximity to village centre as desirable for two reasons:-

- To allow for older people to continue living in Alstonville.
- To allow for younger people to take up the larger homes – which could provide for a more balanced demographic within the community (therefore sustaining the service clubs, schools and retaining the need for a range of shops in the village centre).

Other respondents did not want to change the current make-up of Alstonville at all, and felt the character of the village would be lost if there was too great a change in housing densities.

Affordability was another common theme for local residents, particularly ensuring there is a continued supply of affordable housing in Alstonville. Whilst affordability wasn't defined, it has been taken to mean that typical families can afford to buy a comfortable, reasonably sized home in Alstonville with a reasonable mortgage repayment.

Traffic – both road and pedestrian

A number of respondents provided feedback on improvements they see as needed in traffic management, especially around the schools and the village centre. Footpath improvements were also a common theme.

Quarry operations

A number of respondents mentioned the Gap Road Quarry and there was some confusion about its operations, a possible extension to those operations and how long it would remain open and under what conditions. This has been a topic of concern for many of late, and the minutes of Council's July Ordinary and August Extraordinary Council meetings include further information for anyone wanting to know more. See under Minutes and Agendas on Council's website for more details.

Bikes for commuting

A few people mentioned cycling both as a way to get around and also to have some fun enjoying the local area. Signs noting that cyclists use the road in certain locations were suggested where these locations were regular routes.

Many people also use bikes as a way to get around town easily and ways to make this safer and more integrated into the local traffic system was often raised.

Vegetation in the Main Street

The vegetation in the main street and in village locations also received some attention. Most people responding wanted to see more vegetation of various kinds as they felt it added to the ambience and character of the village.

BALLINA

Information about the Ballina Major Regional Centre Strategy projects that are completed or underway can be found on the project website (look for the links to the strategy on the Ballina Shire Council home page). Current projects include planning for the upgrade of Pop Denison Park, construction of the coastal recreational path, preparation of an economic opportunity, innovation and activation strategy, planning for an indoor sporting facility and planning for enhanced marine infrastructure in Ballina.



WARDELL

At Wardell, Council has considered infrastructure and capital works plans for the village, is preparing of a commentary on the historic use of the Richmond River, and is progressing construction of a board walk along the riverfront in the vicinity of Bridge Drive.



WOLLONGBAR



**WOLLONGBAR
it's your turn next!**

*Look out for
Council staff in
your area around
November.*

work starts on new plan for pedestrians

We are all pedestrians at some point in our day to day travel, whether walking to school, work, shops and services, out with the dog, or for exercise or relaxation. A 'pedestrian' is defined as a person walking, and includes people in wheelchairs, on roller skates or riding vehicles such as skate boards or other vehicles, other than a bicycle, powered by effort or a motor and with a maximum speed of 7 km/h.

In 2016-17, council will be preparing a new Pedestrian Access and Mobility Plan (PAMP). The PAMP is a strategic and action plan to build pedestrian facilities, such as footpath connections and pedestrian refuges. The PAMP focuses on providing safe, convenient and connected pedestrian routes, with equity of access.

The PAMP study area will cover Ballina Shire, and this includes: Alstonville, Ballina Island, East Ballina, West Ballina, North Ballina, Ballina Heights, Skennars Head, Lennox Head North, Lennox Head South, Wardell, Wollongbar, Tintenbar and Newrybar.

Developing the PAMP involves reviewing existing pedestrian projects, collecting pedestrian crash data, and consulting with communities. Consultation will commence this month. Keep a look out for newspaper ads and on the council website to get involved.

To provide feedback visit ballina.nsw.gov.au or contact Helen Carpenter, Road Safety Officer, Civil Services Group, Ph 6686 4444.

Submissions close: Tuesday 20 December 2016.



marine rescue tower project update

The construction of the new Marine Rescue Tower on the Northern breakwall of the Richmond River in Ballina is on track and is expected to be completed by the end of October.

The next of the stage of the project is the demolition of the old tower and refurbishment of the public toilets, set to commence 10 October 2016.

For works to be completed in the most efficient and safest way, the North Wall path along the break wall will be closed to pedestrians and cyclists from 7am until 4pm each day from Friday 14 October 2016 to Wednesday 18 October 2016. The pathway will be open outside of these times.

The Marine Rescue volunteers are now operating from the new tower.

The funding partners of the \$2.283 million project include Ballina Volunteer Marine Rescue (\$150,000), Ballina Shire Council (\$318,000), NSW State Government (\$965,000) and the Australian Government (\$850,000).

Time-lapse video has been capturing the construction of the new tower and will now focus on the demolition of the old tower. To view the time-lapse video visit ballina.nsw.gov.au





motorcycle safety

In the year to date, 37 motorcyclists (including passengers) have been killed in crashes on roads in NSW. This figure represents about 15% of all fatalities. Motorcycle riders are more exposed, and risk serious injuries if they are in a crash.

Both riders and car drivers can take action to improve motorcycle safety.

Motorcyclists should ensure they have the best protection by choosing safer helmets and riding gear, doing regular bike maintenance and riding a motorcycle with anti-lock braking systems. On the road, riders need to constantly assess risks and scan the road. Set up by applying brakes lightly as you approach possible hazards, and make buffers to position your bike to create maximum space around you away from hazards.

Drivers need to check blind spots and look out for motorcyclists when getting out of your car, pulling out from the kerb, and changing lanes. Give motorcyclists space and be aware of rider's lane filtering. (Lane filtering is legal in NSW. This law allows a motorcyclist to move past a vehicle that has stopped or is moving slowly, at a speed of 30km/hour or less.) Speed, alcohol, fatigue and mobile phone distraction can increase the risk of a crash for all road users.

Riders can check their responses to different risks on the Ride to Live website ridetolive.nsw.gov.au

Safety tips and rides for motorcyclists around the Ballina Coast and Hinterland can also be found in the Ballina Base Motorcycle Touring Guide.



parking and school zones

You may have read a story the Northern Star published in August titled "Dad cops \$300 parking fine for 60 second school drop off".

Council has for the past 15-years had a school parking program. This is to ensure that children, parents and carers are safe in and around these areas and that no-one is injured or hurt on their journey to or from school.

Council works closely with all schools regarding our program and suggests schools regularly educate and communicate this program to students and their families.

This commitment by Council ensures that the vast majority of parents and carers who correctly park and obey signage are supported for doing the right thing. Council makes no apologies for penalising those who choose to run the risk of compromising the safety of our children by parking illegally.

Unfortunately in recent years, children have been killed and injured in school zones in NSW. Thank you to the vast majority of parents and carers who are doing the right thing by our children.



buying a 4WD permit to access Seven Mile Beach has just been made easier.

An automated kiosk is situated opposite the Lennox Head Surf Club approaching Camp Drewe Road.

1 day permit	\$10.00
30 day permit	\$30.00
6 month permit	\$45.00
Annual permit	\$75.00

Payment by Card Only.

For more information visit ballina.nsw.gov.au or telephone 6686 4444





Ballina Shire Local Emergency Management Plan (EMPlan)

Ballina Shire has a newly prepared local Emergency Management Plan (EMPlan). This document describes the local level arrangements to prevent, prepare for, respond to and recover from emergencies.

Ballina Shire Council has been responsible for coordinating the development of this plan with the emergency agencies that sit on the Ballina Shire Local Emergency Management Committee (LEMC). This includes:

EMERGENCY SERVICES – Police Force, Fire & Rescue, Ambulance, Rural Fire Service, State Emergency Services, Marine Rescue, Airlservices and Surf Lifesaving.

FUNCTIONAL DEPARTMENTS – Primary Industries, Human Services, Family & Community Services, and Local Health District.

OTHER REPRESENTATIVES – Roads and Maritime Services, Telstra, Essential Energy, Rous Water, Environmental Protection Agency, Fisheries, and Red Cross.

The EMPlan objectives include:

- defining participating organisations, roles and responsibilities setting out the control, co-ordination and liaison arrangements;
- detailing activation and alerting arrangements for involved agencies; and
- detailing arrangements for the acquisition and co-ordination of resources.

The 'Emergency Services' section of the Council website has been updated to include details of the plan, and allow the community to access publicly accessible sections of the document.

This plan will be reviewed regularly by the LEMC to ensure it remains current.

Dog reunited with owner thanks to microchip nearly two years after going missing

Sonny Bill Williams, now aged four, is a male black pug that went missing two-years ago near Woolgoolga.

In July a young girl brought Sonny Bill to Council's Animal Shelter after finding him on the highway near Coolgardie.

Ranger Joe Sabine scanned Sonny Bill's microchip, and was able to identify who the owner was – even though she had relocated to Western Australia.

The owner cried with delight when she received the call from Ranger Joe. She never thought she'd see Sonny Bill again as he was so young when he went missing.

Sonny Bill was transported by an animal courier via road and air and reunited with the owner; he has settled in really well with his family in WA.



BITUMEN RESEAL PROGRAM 2016-17

This is the list of roads for our 2016-17 bitumen resealing program, starting in November through to February.

URBAN ROADS

Alstonville

- Mellis Circuit
- Newbon Street
- Lismore Road

Ballina Island

- Brunswick Street
- Burnet Street
- Clavan Street
- Kerr Street
- Tamar Street

Ballina East

- Ainsworth Close
- Bonview Street
- Cedar Crescent
- Craig Street
- Foster Street
- Henderson Street
- Northumberland Drive
- Sharpe Street
- Stapleton Street
- Steele Street
- Suzanne Street

Ballina North

- Southern Cross Drive
- Virginia Place

Wardell

- River Street

Wollongbar

- Parker Street

RURAL ROADS

- Gibsons Road, Alstonvale
- Eltham Road, Eltham
- Reedy Creek Road, Empire Vale
- Fernleigh Road, Fernleigh
- Tooheys Mill Road, Fernleigh
- Majors Lane, Fernleigh
- Marom Creek Road, Marom Creek
- Nashua Road, Nashua
- Pimlico Road, Pimlico
- Willowbank Drive, Pearces Creek
- Rous Road, Rous
- River Drive, South Ballina
- Upton Place, Teven
- Lovegroves Lane, Uralba
- Wardell Road, Wardell
- Sneaths Road, Wollongbar

REGIONAL

- MR 7734 -Tintenbar Road



road projects

RECENTLY COMPLETED

Angels Beach Drive

The major upgrade to Angels Beach Drive has been completed. The Roads and Maritime Service (RMS) identified Angels Beach Drive as a black spot and allocated \$2 million to the upgrade to make this arterial road and intersection safer and prevent future fatalities. Landscaping of the roundabout will finalise the project. Council thanks the community for their patience during these construction works.



CURRENT PROJECTS



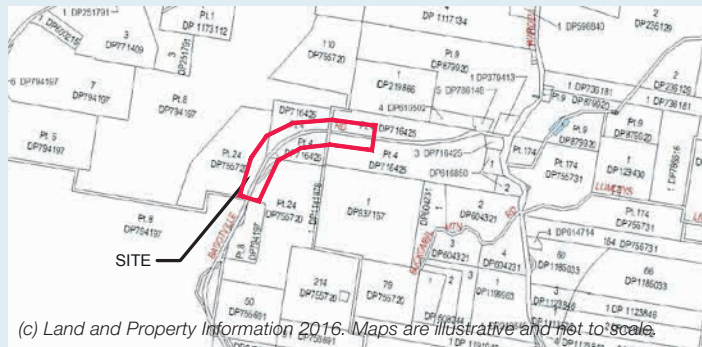
Shelly Beach Road upgrade

Council has reconstructed Segment 10 of Shelly Beach Road. Works included upgrading approximately 240m of road and the reconstruction of a section of car park north of the old surf club. Works were completed in late September.



Coastal Recreational Pathway

The boardwalk section of the coastal recreational path at Angels Beach has been delayed due to material and contractor resourcing and is now due for completion in late October. The contractor will then move to the construction of the path to the east of the Flat Rock Tent Park. Council's construction teams will also then proceed with the Cultural Ways entry and the southern Angels Beach section. The construction of the section of the path across Sharpes Beach car park to the Sharpes Beach underpass was completed during September.



Bagotville Road

Council has reconstructed Segment 15 of Bagotville Road. Works included upgrading approximately 800m of road. Works were completed in September.



Wardell Boardwalk

Working towards better connecting our Wardell to make it more accessible the board walk construction has commenced and will run parallel to Bridge Drive from the Wardell Wharf to the underside of the Pacific Highway Bridge and then reconnect with Bridge Drive. Council has contracted Bell Rock Marine to undertake this \$500,000 project.

engaged leadership



We spent \$5.5 million on upgrades to the Ballina Byron Gateway Airport, with an apron extension, runway overlay, long term car parking and additional taxiway.



We built a new Ballina Surf Club at Lighthouse Beach in Ballina. This provides popular high quality function rooms, community meeting spaces, a café, and a new club house for the Ballina and Lismore Lighthouse Surf Lifesaving Club.



We received \$4.5 million grant funding to provide affordable housing for eligible residents in Wollongbar and \$5.1 million for Ballina Heights.

Housing subsidies provided to mid to low income earners building new homes in estates in Wollongbar and Ballina Heights.



We connected Ballina to Lennox Head via a Shared Pathway which enables our community to safely walk or cycle between the two towns.



Council upgraded the River Street Ballina Town Centre, between Cherry Street and Martin Street and the southern end of Moon Street.



2012



P R O G



Woolworths displayed continued confidence in the local economy by investing in the reconstruction of the 'little Woolies' in River Street, Ballina.



Construction commenced on the \$8 million sporting fields and facilities project at Wollongbar.

Construction completed of \$8.5 million Ballina Heights Drive.



Council spent \$45 million upgrading the Wastewater Treatment Plants in Ballina and Lennox Head.



Council has responded to the shortage of affordable housing and adopted a policy which waives developer contributions for granny flats until 2018.



Named Novaskill Employer of the Year. Zac Green (pictured) taking out Disability and Apprentice/Trainee category at Group Training Awards. Alfie Proberts was named top 11 finalist for Indigenous Apprentice/Trainee category.



Airservices Australia fully funded the construction of a new \$12.5 million aviation rescue fire station at the Ballina Byron Gateway Airport.



We secured funding for the Marine Rescue Tower and have almost completed construction of this important community asset.



Council commenced the construction of the Coastal Recreational Path which will connect the beaches along the Ballina Shire coastline north of the Richmond River.



Council adopted a Ballina Major Regional Centre Strategy 2035, a long term strategy for Ballina.



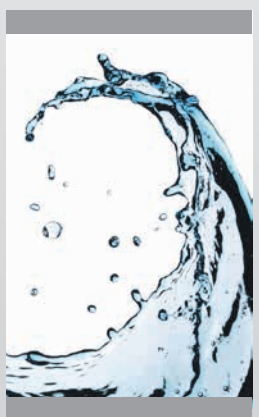
Council has refurbished the Wigmore Shopping Arcade and provided two new car parks in Tamar Street, Ballina plus a Changing Places toilet facility.



The Ballina Coastline Coastal Zone Management Plan was gazetted by the NSW Government.



RESS ————— 2016



We implemented Fluoridated Water, as directed by NSW Health, to improve the dental health of our community.



Ballina Shire Council was declared Fit for the Future as part of the NSW Government's Fit for the Future reform program.



Council processed \$280 million worth of development applications over 2014 and 2015.



The Lennox Community Centre has been transformed into a premier live event venue with the opening of the Park Lane Theatre, featuring state of the art facilities.



Over the past four years we have invested over \$51 million delivering major road works and public infrastructure.



Council turned on Recycled Water for new residences in Lennox Head.

ballina coast & hinterland



WHAT TO DO DURING THE SCHOOL HOLIDAYS?

Looking for something to do with the kids or grandkids over the school holidays? There's something to please all interests including educational, sporting, family fun and creative activities to keep the kids, and you, entertained.

Visit the Ballina Visitor Information Centre, 6 River Street, for your copy of the School Holiday Program or download a copy from discoverballina.com

If you're hosting an activity in the Ballina Shire contact the Visitor Information Centre on telephone 1800 777 666 or email your details to balinfo@ballina.nsw.gov.au

DISCoverballina souvenir disc golf Frisbees

The Ballina Visitor Information Centre now has souvenir disc golf frisbees available for hire or purchase.

The disc golf frisbees are custom stamped with destination branding and are the first frisbees produced especially for the Northern Rivers. While having a practical purpose, this first run of Frisbees is expected to be somewhat of a collector's item.

Visitors and locals are seeking frisbees for a game of disc golf at the newly installed Disc Golf Park at Bicentennial Gardens. Our destination brand tagline DISCoverballina is a great fit with Ballina's new disc golf park and we saw this as an opportunity to extend our range of souvenirs, while providing an affordable hire option.

The Ballina Visitor Information Centre is open seven-days from 9am to 5pm. The cost to hire discs is \$10 for up to four discs over a 48-hour period. A credit card pre-authorisation or cash deposit is required at the time of hiring. Scorecards with a course map are available from discoverballina.com or when hiring your Frisbee from the Ballina Visitor Information Centre.

The Bicentennial Gardens Disc Golf Park is a nine basket, 28 par course located on Tamarind Drive, Ballina. Entry to the Park is free and is open dawn till dusk every day.



BALLINA... A BREATH OF FRESH AIR

The Ballina Visitor Information Centre and the Ballina Byron Gateway Airport will launch a destination awareness campaign in October, titled A Breath of Fresh Air. The campaign is aimed at increasing overnight visitation through fly-drive offers with unique food, culture and arts experiences to millions of Victorians.

We have been successful in securing \$100,000 for a marketing campaign targeting adult couples, living in Victoria, with a medium to high disposable income, who are looking to take a fly-drive holiday within the next six months. This was made possible thanks to Regional Visitor Economy Funding (RVEF) quarantined for the North Coast Destination Network. RVEF is managed and administered by the NSW Government's tourism and major events agency, Destination NSW.

Local businesses can sign up to the reservation system to sell their "pre-saleable product offering" by contacting the Ballina Visitor Information Centre on 02 6686 3484.





LATEST NEWS FROM *ballina byron* gateway airport

Departures				
Departs	Airline	Destination	Arrives	
06:30	REX	SYDNEY	08:20	
09:10	JETSTAR	SYDNEY	10:35	
11:30	FLY PELICAN	NEWCASTLE	12:50	
11:50	JETSTAR	SYDNEY	13:10	
14:30	JETSTAR	MELBOURNE	16:45	
16:00	VIRGIN	SYDNEY	17:20	
16:50	JETSTAR	SYDNEY	18:15	

*All flights/times are subject to change. Details must be confirmed with the relevant airline.

Take to the skies on Sundays



Fly direct to Newcastle with FlyPelican six days a week including a new Sunday afternoon service.

FlyPelican offer flights to Newcastle from just \$99 one way as well as fully flexible fares designed especially for the business traveller.

Monday to Friday flights are now taking off at the earlier time of 11:30am with the Sunday service departing at 5.50pm, perfect for weekend visits by family and friends.

So whether you are travelling for work or play, Ballina Byron Gateway Airport is the most convenient way to travel to and from the Hunter region.

Support your local airport for more flights, more often and Get There Quicker.



ballinabyronairport.com.au



win!

**A BREATH OF
FRESH AIR**

Fly your friends and family
into Ballina and **discover**
your own backyard...

Visit discoverballina.com.au/airportcomp to enter

WIN 1 OF 10
\$250
FLIGHT
VOUCHERS

your chance to **WIN!**

Win a \$250 flight voucher and invite your friends and family to explore your own backyard!

Ballina Byron Gateway Airport is giving you the chance to win one of 10 x \$250 flight vouchers. Simply visit the competition website discoverballina.com.au/airportcomp, fill in your details, and invite your friends and family*!

Fly to and from the heart of the Ballina Coast and Hinterland with the Ballina Byron Gateway Airport.

**Terms and conditions apply. Entry is open for Australian residents 18+over. Promotion commences 9.00am 12 October 2016 and closes 11.59pm 26 October 2016. Authorised under NSW Permit No. LTPS/16/07458. Full terms and conditions available at discoverballina.com.au/airportcomp*

Our achievements so far...

Below are Ballina Byron Gateway Airport Achievements for 2015-2016:

- ✓ Record passenger numbers of 473,693 as at 31 July 2016.
- ✓ CAGRO tender finalised and equipment installation complete.
- ✓ New Aerodrome Emergency Plan.
- ✓ New Standard Operating Procedures.
- ✓ \$2.2m RESTART NSW Funding approved for the Apron and Taxiway Overlay Project.
- ✓ \$4.5m RESTART NSW Funding approved for the Terminal Precinct Expansion Project.
- ✓ Construction of the Asphalt Strengthening Overlay to the main RPT Apron completed.
- ✓ Widening of Taxiway Alpha completed.
- ✓ The passenger throughput number of 473,693 has elevated Ballina Byron Gateway Airport to 12th in the Top Regional 50 Airports in Australia list with an 8% passenger growth rate in the past twelve months.
- ✓ Your local airport is now the second largest regional airport in NSW (in terms of passenger numbers) with Newcastle number one and Ballina Byron Gateway Airport is one of the best performing regional airports in Australia.

So remember, 'Fly Local'.



ballina marina master plan

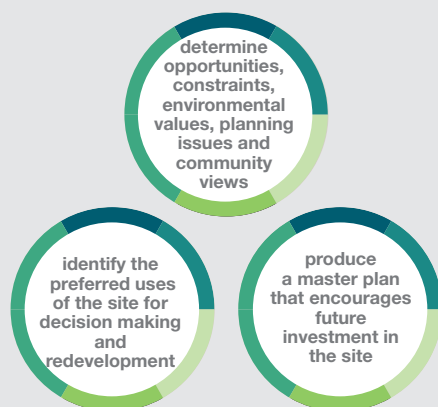
Council is preparing a master plan for the area commonly known as the Trawler Harbour site in West Ballina. The purpose of the Ballina Marina Master Plan project is to prepare a master plan and associated supporting documents to encourage and facilitate redevelopment at this site inclusive of enhanced marine infrastructure.

Council has had a long standing interest in the redevelopment of the Ballina Trawler Harbour into a larger and more diverse marina. Council's interest in this project arises from the potential economic benefits that could be derived from expanded marine infrastructure in the shire as well as consistently expressed interest from the Ballina community in the availability of a greater extent and diversity of marine infrastructure in the Ballina locality.

The first phase of stakeholder and community engagement has provided valuable feedback from the community and interested organisations regarding the opportunities and concerns associated with this site. This phase involved discussion with the community as well as a survey seeking ideas on the composition of a future marina redevelopment in Ballina. The survey sought to determine the nature of existing and potential boating activity in Ballina as well as the current and potential uses of the West Ballina Trawler Harbour site.

Council is now working with specialist consultants on an assessment of the economic feasibility of redevelopment of the site and the preparation of master planning options. Once completed, the master plan options will be available for public comment through a second phase of community engagement and public consultation.

» primary objectives



(c) Land and Property Information 2016. Maps are illustrative and not to scale.

BALLINA SHIRE ECONOMIC OPPORTUNITY, INNOVATION & ACTIVATION STRATEGY

Council is commencing the preparation of an Economic Opportunity, Innovation and Activation Strategy.

The purpose of the strategy will be to: identify the existing building blocks and strengths of Ballina Shire's economy; provide a strategic planning context for advancing the economic development of Ballina Shire; identify actions that Council can take to encourage and promote opportunities for economic development in Ballina Shire; identify opportunities to attract businesses that build on and/or complement Ballina Shire's strengths, lifestyle and environment; articulate Council's existing economic development programs within a broader context; and encourage entrepreneurial and innovative business activity within Ballina Shire.

Staff are currently preparing a package of information as a basis for initial consultation with local Chambers of Commerce and industry groups. So keep a look out for opportunities to engage with Council on this project over the coming months.

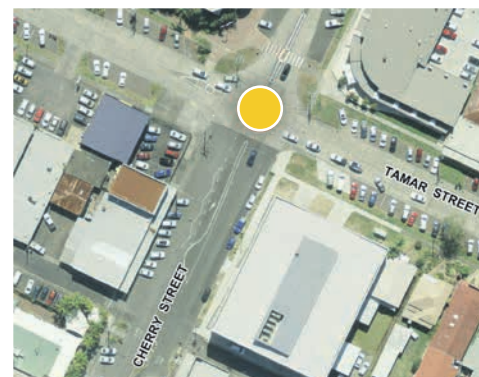
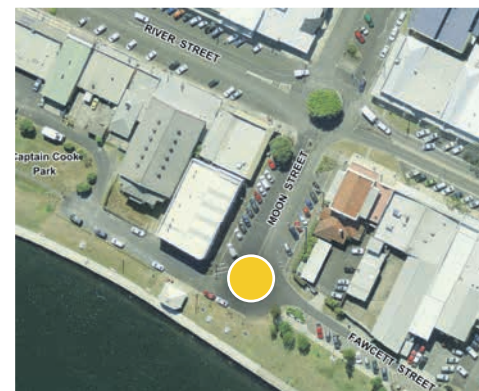
CBD Roundabout Public Art Project

Council is in the process of commissioning public artworks for two sites on roundabouts at the intersections of Cherry and Tamar streets and Fawcett and Moon streets in the Ballina CBD.

In calling for expressions of interests during stage one of the project, artists were asked to consider the local stories or themes relevant to these sites when developing their concept ideas. A variety of concept proposals were received during this stage from both local and interstate artists. These concepts were assessed against project criteria with two artists now selected to proceed to the next stage of the project.

The selected artists are now developing their preliminary concept ideas to provide a more detailed submission that includes a written description and detailed visual documentation of the artwork, a statement about the proposed artwork describing its relationship with the site and its impact on the public domain, a summary of anticipated maintenance requirements and a detailed cost plan.

Once the assessment of this stage is complete, one artwork for each site will be selected for fabrication and installation. The anticipated timeframe for completion of this project is August 2017.





around the *business chambers*

ALSTONVILLE WOLLONGBAR CHAMBER OF COMMERCE

Alstonville Main Street is abuzz with four newly opened businesses. If you are after a bit of retail therapy with style then a visit to B. Grounded should be on your list. The store, owned by three sisters, has beautifully styled gifts, homewares and even a hair salon out the back. The trio really know how to use plants in striking pots to create an instant fresh look for your home.

Close by is Spencer Street Shoes, a store that has sent local ladies in a frenzy with excitement of the thought of a pair of new shoes. A quote on their Facebook page says it all – 'Cinderella....Proof that a new pair of shoes can change your life'. Their shelves are stocked with stunning shoes that may just do this!

Café 86 on Main, set in the old Post Office building has prime spot in the Main Street. Their newly created menu is fresh, delicious and creatively presented. A great meeting place for coffee and cake or a meal with friends. Soon to open for evening meals.

For a quick bite to eat visit, Get Stuffed On Main Take Away. Enjoy a healthy lunch from their salad bar, with key ingredients sourced locally. They can also cater for your next function.

Before heading home, call in to see Ashley and his team at Alstonville Quality Meats. Along with winning many awards in their industry they are this year's winner of 'Business of the Year' at the 2016 Alstonville Wollongbar Chamber of Commerce Business Awards.

Come and visit Alstonville to experience all it has to offer...and feel welcomed by our local businesses!



Image: B.Grounded, Alstonville

BALLINA CHAMBER OF COMMERCE

The 2016 Ballina Coast & Hinterland Business Awards program recognises and rewards excellence in business. It also aims to foster innovation and encourage sustainability, corporate citizenship and safe work practices.

Congratulations to the following 2016 winners:

BEST NEW BUSINESS AWARD:

Spaceman Self Storage

CUSTOMER SERVICE AWARD:

Ballina RSL Club

FITNESS & WELLNESS AWARD:

Lifeworks Pilates

HAIR & BEAUTY AWARD:

Tonic Hair Body Beauty

HEALTH & AGED CARE AWARD:

Physio Plus

HOME BASED BUSINESS AWARD:

Heartfelt Homes

HOSPITALITY AWARD:

Café Swish

MANUFACTURING & INNOVATION AWARD:

Horizon Motorhomes

PROFESSIONAL SERVICE AWARD:

Barefruit Marketing

RETAIL OUTLET AWARD:

The Bicycle Emporium

SUSTAINABLE BUSINESS AWARD:

Summerland House Farm

THE DON KING COMMUNITY & SOCIAL SERVICE AWARD:

FSG Ballina

TOURISM AWARD:

North Coast Holiday Parks Ballina Central

TRADE & CONSTRUCTION AWARD:

Morgan Earthworks

WORKPLACE SAFETY AWARD:

Active Pest Management

PEOPLE'S CHOICE RUNNER UP AWARD:

Curves Ballina

PEOPLE'S CHOICE BUSINESS OF THE YEAR:

Eight Brothers Barbershop

BUSINESS OF THE YEAR:

Solprom Advertising & Marketing - Coaster Kings

The Chamber offers regular professional development seminars and workshops to benefit your business. Training programs cover a whole range of topics, upcoming workshops include:

Financial Planning and Marketing

25 October 2016 (Hosted by Crowe Horwath and Bare Fruit Marketing).

Customer Service

30 November 2016 (Hosted by Nortec).

To secure your place at one of these workshops contact the Ballina Chamber of Commerce:

Telephone: 02 6681 5049

Email: info@ballinachamber.com.au

ballinachamber.com.au

LENNOX HEAD CHAMBER OF COMMERCE

Lennox Head Business Awards 2016 was a great relaxed night of laughter and celebration in true Lennox fashion. Hosted by Club Lennox, with the exquisite cuisine of Lennox Grill. We were so lucky to have the funny John Peacock as MC, highly competitive local business trivia with Geoff Martin, (won by the Beef & Beach table), and the very talented Allensworth band. Not to forget the unique award trophies created by Joe Stark.

Congratulations to all finalists and winners this year!

VISITOR EXPERIENCE:

Beef & Beach

TRADE, CONSTRUCTION & MANUFACTURING:

Skilled Roofing

RETAIL:

Williamsburg

PERSONAL SERVICES:

Lennox Point Dental

AGED CARE & WELLBEING:

Yoga White Lotus

PROFESSIONAL SERVICE:

Barefruit Marketing

BUSINESS OF THE YEAR:

Barefruit Marketing

Special thanks to award sponsors:

Taylors Wines, Coopers, Louise Walsh Interior Design & Decoration, Lennox Point Dental, Coastal Podiatry, Hon Catherine Cusack MLC, and Elite Park Management.

How wonderful to see so many deserving entries, proud to be a Lennox business.

lennoxchamber.com.au

Subscribe to our e-news and follow us on Facebook.



local heroes live amongst us...



nominate your local hero for a 2017 australia day award

Local heroes may not wear a cape and mask but they often go about their good deeds without too much fanfare.

You might come across them daily, or maybe only every so often – but local heroes make an impression through the positive contribution they make to our community.

Each year Ballina Shire Council recognises our local heroes through the Australia Day Awards.

Local heroes are nominated by family members, friends, colleagues and community members.

It's easy to nominate your Local Hero, by completing and mailing the postcard included in this issue of Community Connect or download and complete a nomination online at ballina.nsw.gov.au

**Council will follow up nomination details for nominations received via postcard.*

swim between the flags

Beaches in the Ballina Shire are again being patrolled by contracted surf lifesavers and volunteers.



BEACH	PATROLS START	PATROLS FINISH	DETAILS
Lennox Head Beach	29/06/2016	24/04/2017	9am – 5pm 2 Lifeguards Mon-Fri Volunteers on weekends and public holidays
Sharpes Beach	29/06/2016	24/04/2017	9am - 5pm 2 Lifeguards 7 days a week
Shelly Beach	29/06/2016	24/04/2017	9am - 5pm 2 Lifeguards 7 days a week
Lighthouse Beach	29/06/2016	24/04/2017	9am - 5pm 2 Lifeguards Mon-Fri Volunteers on weekends and public holidays

Get down to your local surf club on Sunday 16 October to be part of the annual Surf Club Open Day. Looking to join Surf Life Saving in NSW? There is a role for everyone at each local surf club whether you like competing, patrolling, education and of course being a Nipper; there's something for everybody. Surf lifesavers don't just patrol the beach; your local surf club plays a much bigger part in the local community than you might think. surflifesaving.com.au/OpenDay

NSW GOVERNMENT SHARK MANAGEMENT STRATEGY UPDATE

SMART DRUMLINES

An additional 85 SMART (Shark Management Alert in Real Time) drumlines will be rolled out across NSW beaches, with a focus on Ballina.

This technology alerts a response team when a shark is captured. The team then respond immediately to tag, relocate and release the shark.

SHARK TAGGING AND LISTENING STATIONS

NSW DPI and CSIRO have now tagged a total of 105 White Sharks and 88 bull sharks which can be detected on the listening stations.

When a tagged shark swims past a VR4G listening station, an instant message is sent via Twitter @NSWSharkSmart and on the SharkSmart app.

DRONE TRIALS AND AERIAL SURVEILLANCE

A three-month drone trial at Ballina's Lighthouse Beach, Lennox Head and Evans Head will run until December.

CASA-certified pilots fly the drones for one hour in the morning every Thursday, Friday and Sunday over an ocean circuit at each location.

If a shark is spotted, beach authorities are advised and, if the shark is close to people, an air horn or siren will be sounded.

Aerial surveillance will continue in the Shire every weekend and every NSW and QLD school holidays.

LENNOX HEAD SHARK BARRIER TRIAL

Global Marine Enclosures (GME) advised DPI of its intention to remove the Aquarius Barrier at Lennox Head after the east wall had come away from the ground chains. GME advised their product cannot withstand local conditions.

ARE YOU SHARKSMART?

Visit the NSW DPI website dpi.nsw.gov.au/info/SharkSmart



Primary Industries



Aboriginal Cultural Ways Interpretative Signage Project

The Aboriginal Cultural Ways interpretative signage project has been in preparation over the last couple of years and is now nearing completion. The aim of the project has been to prepare interpretive material that acknowledges and promotes the Aboriginal cultural heritage values of our shire's coastline. The project has been developed in conjunction with the section of the coastal recreational path that runs between Angels Beach and Sharpes Beach and traverses the Declared East Ballina Aboriginal Place.

The East Ballina Aboriginal Place was declared in 2012 under section 84 of the National Parks and Wildlife Act 1974 to formally recognise the Aboriginal cultural values of the place and its significance to Aboriginal people. These values include the recognition of early colonial conflicts and the extensive cultural features and natural resources, including former wetlands and coastal ecosystems, which provide a continuing teaching resource for current and future generations.

This project represents the ongoing fostering of the relationship between Council and our local Aboriginal community and builds on the collaborative approach that has been established in the planning and construction of the coastal recreational path. The Aboriginal Cultural Ways Interpretive Signage Project has been an extensive collaboration between Council, Jali Local Aboriginal Land Council, Ballina Shire's Aboriginal community and the NSW Office of Environment and Heritage. Council acknowledges the extensive community input provided in the preparation of the material for this project and the hard work of many individuals and organisations.

Ballina Shire Council and the Jali Aboriginal Land Council have recently been awarded first in the State for the 2016 NSW Local Government Aboriginal Network Council Partnership Award for this project. This award recognises a Council working in partnership with an external partner/s to make a significant contribution to Aboriginal communities.

The interpretative signage material will be installed along the recreational coastal path currently under construction. This section of pathway is scheduled for completion by November 2016.

PIXEL THE PAST: BALLINA SHIRE COMMUNITY HERITAGE DIGITAL MENTORSHIP PROJECT

Ballina Shire Council has recently received funding through the NSW Office of Environment and Heritage to deliver the Pixel the Past: Ballina Shire Community Heritage Digital Mentorship Project.

This project will involve partnering young people (15-25) and seniors to promote heritage stories from the Ballina Shire. The project aims to uncover new stories about the region's heritage. The stories underpinning these themes and items or places will be developed into a visual digital media format. It is anticipated that senior participants will contribute their knowledge of the Ballina Shire, acting as a living conduit to the past to motivate young people to engage with it. Young people will work with seniors to share their digital skills and different generational outlook.

Digital media mentors will be partnered with project participants to share technical skills to support the development of new understandings and ways to connect with the shire's heritage. Material gathered through mentor partnerships will be used to present heritage stories in a visual digital format. The project will culminate with an exhibition held to coincide with the 2017 Heritage and Youth weeks.

For further information on the project please contact Skye McNamara in Council's Strategic and Community Facilities Group on telephone 6686 1284.

Kings Court Park

A new \$80,000 playground at Kings Court Park in Lennox Head is open and ready for play and recreation.

The new equipment, which includes landscaping, paths, and picnic shelters to follow, is a result of Council's annual playground renewal plan.





Dive into Summer this Swimming Season

With summer fast approaching, the Alstonville and Ballina Swimming Pools are reopening for their final season before they are redeveloped by Ballina Shire Council. New flexible ticketing options are available.

Residents can save money by purchasing a half-season or full-season pass and have unlimited entry to either Alstonville or Ballina pool (additional charges apply to the Ballina Waterslide).

Family tickets have also changed to recognise the wide variety of families in our community. Discounts of up to 50% are now available for each additional pass purchased with a full priced season pass or half-season pass. This discount is equal to our previous family discount, but is now more affordable for families of all sizes.

In addition to the adult and child season passes, concession passes have been extended to include holders of a Seniors, Student or Pensioners/Health Care Card or for people with a disability.

For occasional pool users, single-entry and ten-ticket passes are also available, with new ticket categories available for concessions and family groups made up two adults and two children; one adult and three children; or all persons listed on a single Medicare or Health Care Card.

THE ALSTONVILLE SWIMMING POOL

Reopened Monday 29 August 2016.

Opening Hours:

Monday to Friday 6am to 6pm;
Saturday 8am to 6pm;
Sunday and Public Holidays
10am to 6pm
Ph: 6628 0826

THE BALLINA MEMORIAL OLYMPIC POOL AND WATERSLIDE

Reopened Saturday 17 September 2016.

Opening Hours:

Monday to Friday 6am - 6pm;
Saturday 8am - 6pm;
Sunday and Public Holidays 9am - 6pm.
Waterslide 11am - 4pm on weekends and every day in the NSW school holidays.
Ph: 6686 3771

2016/2017 POOL ENTRY TICKET OPTIONS

These new ticketing option has been provided with the aim of improving flexibility and fairness for pool users. For more information see the price guide below, or speak to our friendly Swimming Pool staff for more information.

SINGLE ENTRY	
Adult	\$5.00
Concession	\$4.50
Child	\$4.00
Family	\$15.00
Spectator	\$3.00

TEN TICKET PASS	
Adult	\$45.00
Concession	\$40.00
Child	\$35.00
Family	\$135.00

INDIVIDUAL HALF SEASON PASS	
Adult	\$145.00
Concession	\$125.00
Child	\$120.00

INDIVIDUAL FULL SEASON PASS	
Adult	\$215.00
Concession	\$195.00
Child	\$185.00

FAMILY HALF SEASON PASS DISCOUNTS

Purchase any two Individual Half Season Passes and receive a 20% discount on the total cost.

Purchase any three Individual Half Season Passes and receive a 30% discount on the total cost.

Purchase any four (maximum) Individual Half Season Passes and receive a 40% discount on the total cost.

Families of more than four persons wishing to purchase Half Season Passes may receive a discount of 40% of the combined total cost off all persons listed on a Medicare or Health Care Card.

FAMILY HALF SEASON PASS DISCOUNTS

Purchase any two Individual Full Season Passes and receive a 30% discount on the total cost.

Purchase any three Individual Full Season Passes and receive a 40% discount on the total cost.

Purchase any four (maximum) Individual Full Season Passes and receive a 50% discount on the total cost.

Families of more than four persons wishing to purchase Full Season Passes may receive a discount of 50% of the combined total cost off all persons listed on a Medicare or Health Care Card.

See Swimming Pool staff or Council's website ballina.nsw.gov.au for full terms and conditions.





Ballina and Alstonville pools redevelopment update

As the Ballina and Alstonville swimming pools open their doors on the summer swimming season, our plans to redevelop these assets are well underway and on schedule.

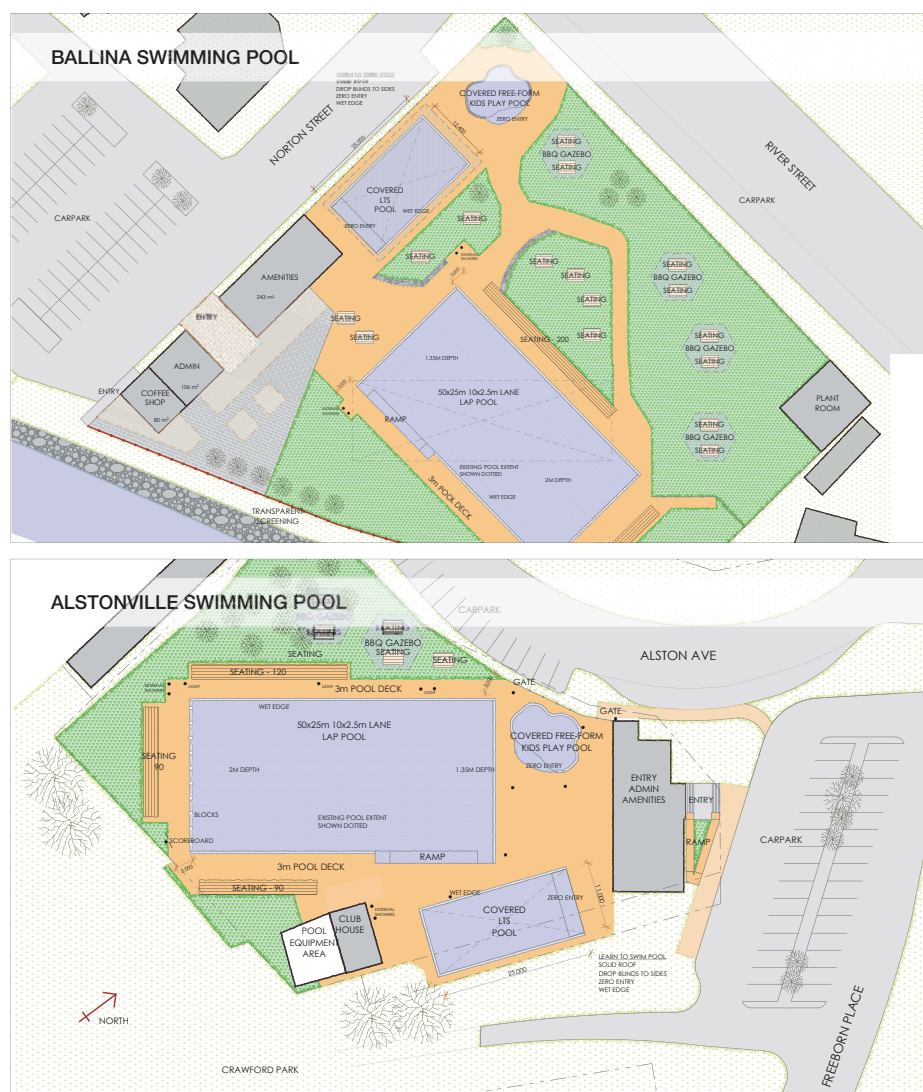
The planning approvals process is almost complete, and the design concepts that were endorsed by Council have been further refined. Council is working with leading industry experts through an early tender process, to finalise the procurement and delivery. With this process now complete tenders for the construction of the pools are on track to be awarded by November.

The redevelopment of the Alstonville and Ballina pools are significant community projects and when completed will benefit many people in our shire.

Consultants undertook extensive community consultation last year and after taking public comments into account the new pool complexes will have:

- FINA compliant 50m x 25m heated pool. Each pool will have ten lanes at 2.5m each to allow for competition swimming and 'across pool' water polo games with simultaneous 25m lap swimming
- 25m x 10m heated learn-to-swim pools and rehabilitation
- Access ramps into both pools
- Wet play splash areas for children
- The Ballina pool will have a new amenities building and transparent screens along the Richmond River.

Work is expected to start in March 2017 and the pools will reopen in September 2017, in time for the summer swimming season.



Swimming pool season – time to check your fence

With summer just around the corner it is a good time to check your pool and fencing:

- Are all gates working, opening outwards, self-closing and latching?
- Have all tree branches been cut back, and garden furniture, bbq and pot plants been relocated to prevent anyone climbing into the pool area?
- Are all gaps under the fence less than 100mm in diameter?
- Is there a resuscitation chart clearly displayed near the pool?
- Are children always supervised when in or around the pool?
- Has your pool been registered on the NSW Government's Pool Register website swimmingpoolregister.nsw.gov.au

ARE YOU THINKING OF LEASING OR SELLING YOUR PROPERTY?

From 29 April 2016, properties with a pool or spa must have a valid pool certificate of compliance or final occupation certificate (each valid for three years).

Properties cannot be advertised for sale or lease unless a valid pool certificate of compliance or final occupation certificate is attached to the sale contract or tenancy agreement.

For enquiries contact our Building Services Section on telephone 6686 1415.





The Northern Rivers Big Band is coming to Park Lane Theatre

The organisers of Lennox Head's beloved Jazz by the Sea concert are bringing the renowned Northern Rivers Big Band to Park Lane Theatre, Lennox Community Centre in October.

This special evening will be a cabaret styled event with BYO food and drinks (just like Jazz By the Sea) with tables of eight or ten. So get your friends and family together, book a table and share a great evening of food, drinks, amazing jazz and dancing. There will be a dance floor so make sure you bring along your dancing shoes and dance along to the amazing sound of this local band.

When: Saturday 22nd of October, 7.15 pm

Tickets \$25 (general)

For table reservations call Sue 0409 728 814 or Liz 0411 544 004. Tickets are limited.

earlier library opening hours

The Ballina and Lennox Head Libraries have a new opening time of 9am.

Ballina Library is open 7-days a week and the Lennox Head and Alstonville Libraries are open Monday to Saturday.

Ballina Library 66876 2831

Lennox Head Library 6687 6398

Alstonville Library 6628 5527

For more information visit rtrl.nsw.gov.au

Sprung!! Integrated Dance Theatre Inc presents: *Encounters*

Coming to the Lennox Community Centre this October is *Encounters*, Sprung!!'s latest dance theatre work which explores the journey of individuation and the quest for identity and belonging with ten dancers with and without disability.

The performance *Encounters* will be the centrepiece of an Arts and Health Weekend at Park Lane Theatre, Lennox Heads Community Centre, on 15 and 16 October.

The Arts and Health Weekend includes the following events:

ENCOUNTERS AT LENNOX

Saturday 15th October – 6pm to 9pm

6.00pm – Buffet dinner with live music

7.00pm – *Encounters* performance

8.00pm – A dynamic panel discussion with guest speakers offering different perspectives on Disability, Arts and Health. Panelists include Lynne Seear, past deputy director of QAGOMA and currently Arts Program Manager at Lady Cilento Children's Hospital in Brisbane.

Please note: The panel discussion will be Auslan interpreted

Tickets \$50 (general) / \$40 (concession and / or early bird ticket price)

ARTS WORKSHOPS

Sunday 16th of October – 10am to 1pm

Clowning workshop with Sally Davis

Ceramics workshop with Amanda Bromfield

Creative Writing workshop with Hilton Koppe (the creative writing workshop will be Auslan interpreted)

Tickets \$30 (general) / \$25 (concession)

ENCOUNTERS MATINEE PERFORMANCE

Sunday 16th of October – 2pm to 3pm

Encounters performance

Tickets \$25 (general) / \$18 (concession)





Pimlico Hall – community survey

The Pimlico Hall was built in 1937 and has been managed by the Pimlico Ladies Charitable Organisation since 1974. The hall has been a social hub for many years it has been used for weddings, elections, dances, flower shows and the monthly 'hoi' which has been a community fundraiser for various charities.

The Pimlico Ladies Charitable organisation has recently advised Council they no longer have the membership base to maintain the ongoing responsibilities associated with managing the hall.

Council is seeking suggestions from the local community on what the future of the hall should be. A short survey has been developed and we ask interested residents or groups to take the time to complete the survey to give us an idea of what should happen with the hall. The survey can be found on Council's website. Alternatively you can email your comments to: pimlicohall@ballina.nsw.gov.au. The survey will also be available at the Wardell Post Office and local residents will be letter box dropped.

The survey will close Friday 11 November 2016. For further information please contact Council Strategic and Community Facilities Group on 6686 1284.



THE AUSTRALIAN BEE GEES SHOW

The award-winning, internationally acclaimed Australian Bee Gees Show is coming to the Park Lane Theatre at the Lennox Community Centre in August 2017.

Venue information and tickets: communityspaces.com.au Ph: 02 6687 6291

Show information: abgshow.com and facebook.com/TheAustralianBeeGees

market calendar

Discover original artworks, handicrafts, fashion, jewellery, second hand goods, as well as fresh local produce...or just sit back, relax and enjoy the sights and sounds of your local market.

MISSINGHAM FARMERS MARKET (Weekly)

Every Sunday morning
Missingham Park Carpark
off Kingsford Smith Drive
Ballina

EAST BALLINA LIONS CLUB COMMUNITY MARKET (Monthly)

Every third Sunday
Canal Road
(between Saunders Oval and Ballina RSL Bowling Club)
Ballina

LENNOX HEAD COMMUNITY MARKET (Monthly)

Every second and fifth Sunday of the month
Lennox Head Community Centre
Lennox Head

THE PLATEAU MARKET AT ALSTONVILLE (Monthly)

Every second Sunday
Alstonville Showgrounds
Alstonville

There's a craft market, a car-boot market or a farmers market, somewhere in the Northern Rivers, every weekend.

View the Northern Rivers Market Guide at discoverballina.com to see where the markets are this week!

What's on? COMMUNITY EVENTS



IF THESE HALLS COULD TALK

SATURDAY 15 OCTOBER 2016
6.30PM

Meerschaum Vale Hall

ifthesehallscouldtalk.com.au/program

On 15 October Meerschaum Vale Hall in the Ballina Shire will host Land to Vale; a film premiere by H.W. Collective whose films were official selections for Flickerfest International Short Film Festival, Oberhausen Film Festival in Germany and Très Court International Film Festival in Paris. Land to Vale traces Meerschaum Vale's vast history, from its traditional Indigenous landowners through to modern-day fourth generation farming families, and weaves together rich archival material with present-day footage into a hauntingly beautiful visual poem.



RUNNING WITH THE DOGS

SUNDAY 16 OCTOBER 2016
7.30AM

Missingham Park Amphitheatre

Mick 6681 4516

PETSTOCK's 4.5km Running with the Dogs will premiere in Ballina with all funds raised going to NRAS (Northern Rivers Animal Services). Running with the Dogs will commence at 8:00am - on the day registration from 7:30am. Pre-event registration is encouraged and is only available in-store at Petstock Ballina, Boeing Avenue.

Single entry is \$15.00 or family discount entry available (1 adult and up to 4 children for \$30.00 of 2 adults and up to 4 children for \$50.00).



NSW WAVESAILING ASSOCIATION COMPETITION

SATURDAY 15 – SUNDAY 16
OCTOBER
11AM - 6PM

Angels Beach and Flat Rock Beach

Tim Williams 0409 757 315

Each year windsurfers from NSW compete in a series of wavesailing events with the most northern competition being held at Angels Beach, Ballina. Wavesailing is much like a surfing contest in which sailors compete in heats, gaining points for jumps and riding waves. The Ballina competition will see state of origin rivalry, as competitors from Queensland attempt to take the wavesailing trophy back across the border.



ALSTONVILLE SHOW 2016

FRIDAY 28 – SATURDAY 29 OCTOBER
Alstonville Showgrounds

avilleshow1@bigpond.com

Come along for a great time for the entire family. Working dog trials, animal nursery, poultry pavilion, fireworks, music, food, bullride, showjumping and of course sideshow alley and rides.



NEWCASTLE PERMANENT'S CINEMA UNDER THE STARS

FRIDAY 4 NOVEMBER 2016

**Missingham Park,
Ballina**

[facebook.com/newcastlepermanent](https://www.facebook.com/newcastlepermanent)

The 10th season of Newcastle Permanent's Cinema Under the Stars kicks off in Ballina. Our free outdoor cinema program screening of Zootopia will commence as the sun sets and the stars come out.

From 5:30pm, there will be family friendly entertainment including Circus in Education for children to practice their circus skills, local musicians and photo opportunities with a character from Zootopia.



WALK 4 BRAIN CANCER LENNOX TO BYRON

SUNDAY 6 NOVEMBER 2016
6.00AM

Lennox Head Library

walk4braincancer.com.au/events

Get to your feet for an inspirational 21km beach walk from Lennox Head Library to Byron Bay (Denning Park). Walk in memory of those who have lost their battle with brain cancer and in honour of those still fighting. Food and refreshments will be available at the end of the walk, with proceeds going towards the Cure Brain Cancer Foundation. For a small fee, shuttle buses will be waiting to transport walkers back to Lennox Head. Don't delay and register yourself or a team today!



Events listed are
programed from 16
October to 11 December
2016 and are correct at
time of publication. Visit
discoverballina.com or
telephone 1800 777 666
for event details.



BALLINA PRAWN FESTIVAL

SATURDAY 12 NOVEMBER 2016
10AM - 10PM

Missingham Park, Ballina
ballinaprawnfestival.com.au

Set on the banks of the glorious Richmond River, the Ballina Prawn Festival is one whole day and night of fun, laughter and community. From tasting the delicious sizzling prawns, mingling amongst the buzzing crowds, or taking an exhilarating spin on the Ferris wheel, the Ballina Prawn Festival delights young and old.

Festival visitors can enjoy great music with an impressive line-up of established and emerging artists; delicious food with many of the top restaurants throughout the Northern Rivers participating, the huge Fair Go Skate Comp, and punters can even join in the hilarious DIY Raft Race!

The Ballina Prawn Festival is a quintessential Aussie event and a wonderful celebration of the laid backed Ballina lifestyle bringing together thousands of local residents and visitors from throughout the Northern Rivers and beyond.

Mark the date in your diary and invite some friends or family for the weekend. In fact the Ballina Visitor Information Centre has fabulous Hot Deals on accommodation for the festival weekend.

Visit discoverballina.com for details.



Australia's campaign to
stop violence against women

White Ribbon



WHITE RIBBON DAY WALK

FRIDAY 25 NOVEMBER 2016
10.00AM

Ballina RSL Club
whiteribbon.org.au

Walk through the main street of Ballina to raise awareness and end the silence around violence against women. Walk with us from Ballina RSL Club to the Richmond Room. There will be speeches to highlight the need for collective action to stop violence against women and the positive role that non violent men have to play in changing male cultural attitudes that drive domestic violence. Enquiries Bunjum 02 66811 540 or The Family Centre 02 6686 4109.



LENNOX CAROLS

SUNDAY 4 DECEMBER
Williams Reserve, Lennox Head
 **Like us on Facebook**

Following an amazing 2015 Carols, this free community event will provide fun, food, fireworks, fabulous local entertainment and a flying Santa!

Organised by local volunteers, and supported by local businesses and community organisations, this is a great evening for the whole family. Bring your gold coins, blankets and chairs; sit back and enjoy this festive celebration.

The Lennox Carols is an alcohol and dog free event.



ALSTONVILLE CHRISTMAS IN THE PARK

FRIDAY 9 DECEMBER 2016
4:30PM - 7:30PM

Elizabeth Ann Brown Park, Alstonville
christmasinthepark2016@gmail.com

Get ready Alstonville, the countdown to Christmas has begun and the combined churches of Alstonville and Wollongbar look forward to hosting the Alstonville Christmas in the Park.

Join in the Christmas carols led by award-winning entertainers, the Headliners and be dazzled by our local preschool and school children as they perform a range of songs. Enjoy the free sausage sizzle, Christmas crafts, jumping castles and 'living nativity'. Come and pet the nursery animals and have your face painted at this free family event.

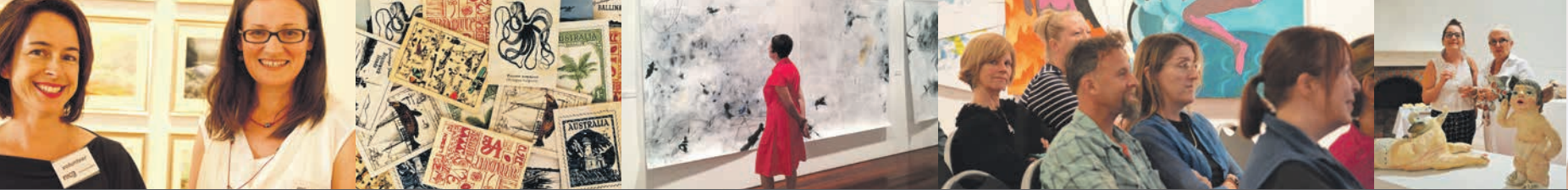


RIVERSIDE CAROLS

SUNDAY 11 DECEMBER
Seagulls Football Oval, Ballina

Riverside Carols is an alcohol free community event for all the family to enjoy. Hosted by the combined churches of Ballina and Lennox Head. Local schools, choirs and various artists will perform on the community stage from 6pm before the main event. Carols will commence on the main stage at 7.30pm. Bring a blanket and enjoy a night of traditional Christmas carols, then see the sky light up with a fantastic fireworks display.

There will be food and drink vendors. Gold coin donation on entry, all funds raised go to charity (BSREA).



current exhibitions

Exhibition Dates: 28 September – 23 October 2016
Launch Event: Thursday 29 September 2016

SEPTEMBER 2016

Light and Dark | Three Wild Women



In this exhibition artists, Ann Belle, Philippa Leader and Tara Planet present a series of work that explore states of being; joy and sorrow from different points of view. The images represent personal narratives and understanding using a variety of media and techniques.

Image: Philippa Leader, *Gratitude*

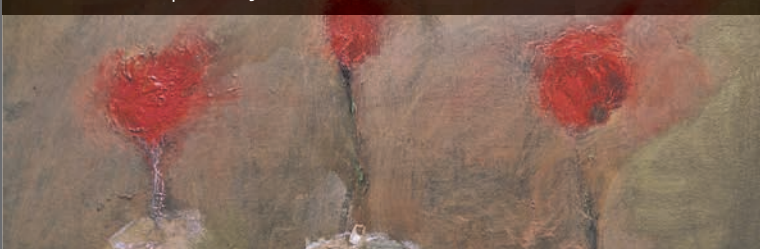
Gone Girl | Amanda Bromfield



Gone Girl is about the women who have been affected by violence, in particular those who have suffered and those who have been killed by acts of domestic violence. Gone Girl is about loss, not just loss of life but loss of innocence, independence and freedom.

Image: Amanda Bromfield, *Gone Girl*

Flowers | Hilary Herrmann



This body of work is based on imagined beginnings. Objects filtered through dappled memory. The work is about painting, composition and an aesthetics outcome. Although whimsical, there is a large undertaking towards formalization playing with colour, form and the conjured content to find contemplation.

Image: Hilary Herrmann, *Vases II*

Blow-up / The Remix | Kerry Elias-Moore



Captured in freeze frame, Kerry Elias Moore's paintings of movie stills from the 1960's cult movie, 'Blow-up', show a remix of selected scenes in a storyboard arrangement. The artist presents these works as homage to the director, Michelangelo Antonioni and his renowned style.

Image: Kerry Elias Moore, *Speeding*

the gallery shop



Images: Olive & the Volcano, *Notebooks*, Ghost & Lola, *Earrings*, Georgie Maddox, *Resin Blocks*, Eve Grace, *Pendant*

The **NRCG Gallery Shop** features unique and locally handcrafted jewellery, giftware and greeting cards and is a popular destination for locals and visitors seeking special gifts and homewares this holiday season. Every purchase from the NRCG shop supports local artists and crafts people throughout the region.

nrcg
 northern
 rivers
**community
 gallery**



art at the airport

Damien O'Mara



Exhibition Dates: 8 September – 2 November 2016

The Airliner Series investigates the use of industrial objects through photography, where simplistic and regular functional forms have been used to represent regimented and restrictive forms of human engagement.

Image: Damien O'Mara, J787

Nikky Morgan-Smith



Exhibition Dates: 3 November 2016 – 4 January 2017

The works of local artist Nikky Morgan-Smith are both humorous and dark, embodied in metaphors that carry stories and observations of the artists life.

Images: Nikky Morgan-Smith, *Wings*

ART AT THE AIRPORT

upcoming exhibitions

Exhibition Dates: 26 October – 20 November 2016

Launch Event: Thursday 27 October 2016



OCTOBER 2016

All New Home | Natalie Grono, Kathryn Dolby, Gregory Furney, Heath Franco – Curated by Sharne Wolff & Jane Denison

Image: Natalie Grono, *Feather and the Goddess Pool*, Kathryn Dolby, *Driving Through*, Gregory Furney, *Cloud Series 1*, Heath Franco, *HOME TOWN Dawn*, 2016, digital image, inkjet print on cotton rag, 27 x 40 cm. Courtesy of the artist and Galerie pompom, Sydney

Exhibition Dates: 23 November – 18 December 2016

Launch Event: Thursday 24 November 2016

The Epicormia Collective

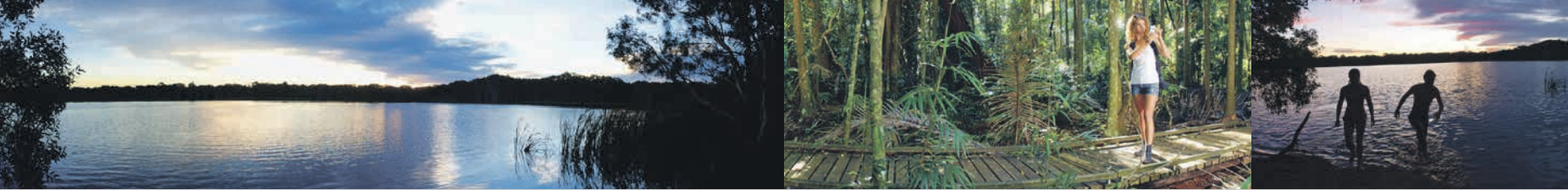
NOVEMBER 2016

The Re-authoring Impulse | The Epicormia Collective

Image: The Epicormia Collective

nrcg | northern rivers
community gallery

44 cherry street, ballina nsw 2478 | ph 02 6681 6167
open wed – fri 10am – 4pm | weekends 9.30am – 2.30pm (closed public holidays)



protect our waterways

Our gutters and drains are all part of a large stormwater system. When it rains stormwater runoff from around our homes and streets can wash pollutants such as soil, detergents and litter directly into our waterways. If we can stop pollutants entering our gutters and drains in the first place, we can help keep our waterways clean and healthy.

What can we do to prevent pollutants from ending up in our roadside gutters and waterways?

- Sweep gutters and driveways – do not hose them.
- Put litter and cigarette butts in the bin.
- Wash cars on the grass or at a car wash.
- Ensure all building sites install and maintain effective erosion and sediment control measures.
- Disconnect downpipes when cleaning roofs.
- Pick up your dog's poo.



Local Plumber Fined for Illegal Works

Following a recent compliance investigation, a local plumber has been issued with a series of fines totalling \$4,400 for illegal and substandard plumbing works.

These illegal and substandard works were undertaken to fire suppression measures within a building and were done without prior notification to Council to enable the required inspections to be undertaken. These works, if remained undetected, could have resulted in a catastrophic failure of the fire suppression system, which would have placed people's lives and the building at significant risk.

It is important that all residents and business owners ensure that the appropriate approvals are in place before allowing tradespersons to undertake works within their property. These substandard works have now been rectified and the plumber has been referred to the Office of Fair Trading for further investigation.

If you are in any doubt about the need for approvals for plumbing work, please contact Council on 02 6686 1415.



Image courtesy: K Foster

WILD DOGS IN YOUR AREA?

Wild dogs were one of the issues that farmers and rural landholders raised as important during the public exhibition of the Ballina Shire Koala Management Strategy. Wild dogs are taking stock and attacking both domestic animals and wild animals in our local area. It's very hard to quantify what the impacts of wild dogs are on local koala populations, or any other wild animal populations, because there is often very little evidence left behind.

If you know there are wild dogs about, you can contact the North Coast Local Land Services office in Lismore to talk about possible options. They offer a number of different options, including working with you and your neighbours in co-ordinated way to reduce their numbers.

Reducing wild dog numbers on your property will not only assist you and your neighbours with reducing stock loss but also help our native wildlife. Programs are included in your NCLLS rates, so they do not cost you any extra to implement, apart from your time.

Go to northcoast.lls.nsw.gov.au for more details.

illegal use of your property

Council has been made aware of wedding and accommodation venues operating mainly in rural areas without development and operational approvals.

Residents have informed Council of noise concerns, amenity impacts, parking and traffic safety and environmental concerns including the management of sewage. Residents have also expressed concern that these illegal businesses are not playing by the same rules as other businesses operating in accordance with the necessary approvals. These concerns are understandable.

Function and accommodation venues require Council consent before operating. In some land use zones under the shire's Local Environmental Plans, these operations may be prohibited. Businesses operating without consent are in breach of the Environmental Planning and Assessment Act, 1979 which can attract significant fines and/or court action.

Anyone interested in establishing these types of businesses should consult with Council's Development Services staff and/or local professional planning consultancies about the requirements for setting up such a business before marketing, taking bookings and commencing activities.

If you are planning a rural wedding or function; first check that the operator has Council approval. You don't want your special day ruined if the venue has to be closed down due to illegal operation.



PROTECTING YOUR PUBLIC HEALTH



don't catch anything unexpected...

From more information contact Council's Public & Environmental Health Section on 6686 1210.
NSW Health provide factsheets on best practice for beauty salons at health.gov.au

let's talk about... **YOUR SEPTIC TANK**

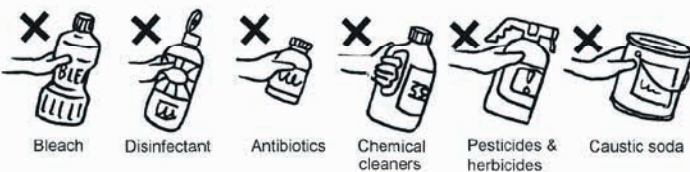
TAKING CARE OF YOUR ON-SITE SEWAGE MANAGEMENT SYSTEM

PRODUCTS THAT AFFECT YOUR SYSTEM:

- **Bleach based products, disinfectants, whiteners, nappy soakers and spot removers** – *Don't put these products into your septic tank or aerated wastewater treatment system via the sink, washing machine or toilet. Dispose these products on an unused area of your garden, well away from any septic absorption trench.*
- **Hygiene products, condoms, tampons, sanitary napkins, disposable nappies and cotton buds** – *Don't put these items down the toilet, dispose safely, into the rubbish bin in sealed plastic bags.*
- **Detergents** – *Don't use more than the recommended amounts and use detergents that are biodegradable and low in phosphorus.*

WATER USAGE:

High volumes of water introduced into the on-site sewage management systems reduce the effectiveness of wastewater treatment and may contribute to premature failure of the effluent land application area necessitating costly repairs or replacement. Attention to water conservation will pay long term dividends.



water usage facts



Showers use 10-30 litres per minute, 200 litres in 10 minutes. Try using water saving heads or flow restrictors.



Baths use an average of 120 litres.



Toilets may use up to 11 litres per flush. Installing a dual flush system or low flush system saves water.



Washing Machines may use 100-200 litres per load. Fully load your machine per cycle. Consider purchasing a front loading washing machine. Use low phosphorus detergents and recommended amounts.



Leaking taps can contribute up to 5 litres per hour.



Dishwashers use approximately 50 litres per cycle. Use low or no phosphorus detergents and don't use the washer until there is a full load.

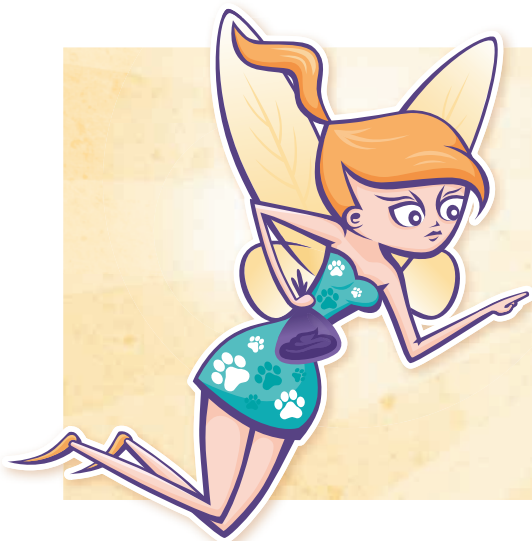


Try to spread the washing and showers throughout the day and week.



When buying new appliances that use water, look for the water efficiency labelling rating (WELS). WELS is Australia's water efficiency labelling scheme that labels water appliances to show their star rating and also a water consumption or water flow figure. The less water used, the higher the star rating. Tapware, showerheads and toilets all have different maximum ratings.

By considering your cleaning products, practices, reducing water usage and planning when showers and washing are done will help keep your on-site sewage management systems functioning efficiently for years to come.



THERE'S NO SUCH THING AS A DOG POO FAIRY

In an effort to keep our beaches, waterways, parks and foreshore areas clean and tidy Council encourages residents and visitors to pick up after their dog. It is the responsible thing to do and it is also a requirement under the NSW Government's Companion Animals Act 1998.

If you leave the dog poo on the ground, the Dog Poo Fairy isn't going to come and pick it up! In fact you can actually be fined by a Ranger, and the fines exceed \$275.

Think about your actions, think about your community and do the right thing. Picking up after your dog will help to keep our streets, parks and beaches clean.

There's no such thing as the Dog Poo Fairy! Bag it and bin it for a cleaner, healthier Ballina Shire.

WATER HAMMER

In the last edition of Community Connect we reported on our Pressure and Leakage Management Plan, which investigates water losses across the Ballina Shire. In addition to these measures, Council also monitors water pressure and water flow.

By monitoring pressure and flow, Council can then:

- Identify areas of high water loss
- Identify new leaks by increased water flows at night
- Reduce the rate of water leaks by reducing pressure, particularly at night

These new water flow monitoring measures also improve the reliability of the infrastructure by identifying water hammer. Water hammer is defined as short periods of increased or decreased water pressure and commonly occurs when a valve closes suddenly at an end of a pipeline system, and a pressure wave develops in the pipe. This pressure wave can cause major problems, from noise and vibration to pipe collapse. Continued, long term water hammer can lead to pipe bursts due to sudden pressure spikes, which can reduce the life expectancy of the pipelines.

For more information on Council's Water Pressure and Leakage Management Plan, visit ballinawater.com.au or contact Ballina Shire Council on 02 6686 4444.



DO YOU KNOW THE LOCATION OF YOUR WATER AND SEWER MAIN?

Have you got trees or shrubs near your water or sewer main?

Did you know their roots can infiltrate our sewer pipelines and manholes?

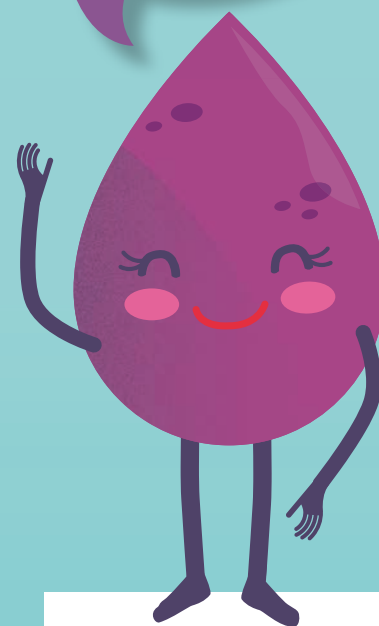
In fact, they probably seek them out. Having vegetation near, around, or on the water and sewer mains can lead to all sorts of problems including; blocked sewer pipes creating sewer overflows on your property, and strangled water pipes which can lead to water main breaks. Planting of trees within the nature strip of any road requires approval from Council. Recently there have been instances where it has been necessary to remove trees from nature strips as they restricted access to fire hydrants.

However, these problems can be avoided by taking a look around your property and making sure the water and sewer main is clear of vegetation and that it can be easily located and accessed.

If you would like more information about water or sewer mains, and how to locate them, contact Ballina Shire Council on 02 6686 4444 or visit ballinawater.com.au



"YES, IT'S THAT EASY! COMPLETE THE SURVEY FOR YOUR CHANCE TO WIN AN IPAD."



WIN AN IPAD!

1. Jump on ballinawater.com.au
2. Fill out the survey
3. You're in the draw!

Terms and conditions apply.

In July this year, Ballina Shire Council commenced delivering recycled water to new residential estates in Lennox Head. This has put our Council in the extraordinary position of being the first Council in regional NSW to successfully deliver dual reticulated recycled water.

Council is now delivering recycled water to over 160 homes in Lennox Head, and is seeking feedback on the new service.

*Terms and conditions apply. Entry is open for Ballina Shire residents 18+over. Promotion closes 11.59pm 3 November 2016. Authorised under NSW Permit No. LTPS/16/07599. Full terms and conditions available at ballinawater.com.au



Drop off your Household Problem Waste for FREE

at the new Ballina Community Recycling Centre

Ballina Shire now has a new easy way to dispose of household problem waste items and help reduce the impact on the environment and increase resource recovery.

The new Ballina Community Recycling Centre was officially opened by Mr. Ben Franklin MLC on 30th June. It's a FREE service for household problem wastes that can't be collected via council kerbside waste and recycling collection services and if incorrectly disposed of can cause significant harm to the environment.

Items that can be dropped off include water-based and oil-based paints, used motor and cooking oils, lead-acid and hand-held batteries, gas cylinders and fire extinguishers, conventional tube and compact fluorescent light globes and smoke detectors. Only household quantities of 20kgs or 20L maximum container size are accepted.

It is estimated that approximately 15 to 20 tonnes per year of these problem wastes will be collected at the new centre.

Items other than those listed above can't be accepted at the Community Recycling Centre. Household chemicals other than paints and oils need to be taken to one of the regions Hazardous Waste Stores. For more information go to newaste.org.au/recycling-and-disposal

The Ballina Community Recycling Centre was funded by an Environmental Trust grant of \$109,498, from the Waste Levy, as part of the NSW state government's Waste Less, Recycle More initiative.

The centres are being operated by local councils and other organisations, working in partnership with the NSW Environment Protection Authority (EPA).

The Ballina Community Recycling Centre is located at Ballina Waste Management Centre, 167 Southern Cross Drive, Ballina and is open Monday-Sunday 8am-4pm (closed public holidays).

For more information visit the Ballina Shire Council website ballina.nsw.gov.au or North East Waste at newaste.org.au



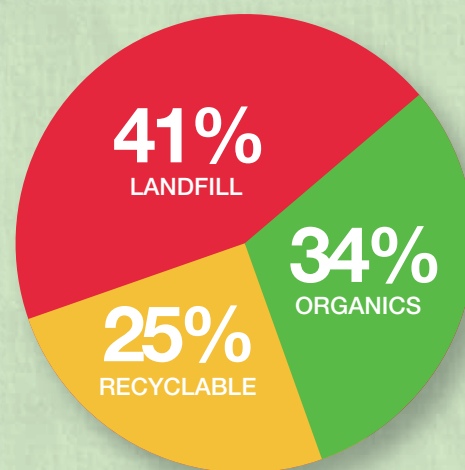
Left to Right: At the opening of the new Community Recycling Centre are Ballina Shire Council Manager of Open spaces & Resource Recovery Cheyne Willebrands, Group Manager Civil Services John Truman, Waste Management Officer Rick Nipperess, Coordinator Waste Management Jenny Hellyer & Customer Service /Weighbridge Operator Louise Randall.



11,500 tonnes of rubbish has been diverted from landfill!

Our kerbside bin service for the 2015/2016 financial year collected 19,491 tonnes from across the Ballina Shire.

The breakdown of different waste streams shows that:



- **LANDFILL**
(red-lidded bin)
- **FOOD & GARDEN ORGANICS**
(green-lidded bin)
- **RECYCLABLE WASTE**
(yellow-lidded bin)

- **41%** of the contents were sent to landfill for burial (red-lidded bin);
- **34%** comprised food and garden organics (green-lidded bin); and
- **25%** of recyclable waste (yellow-lidded bin).

Our recyclables are generally lighter than our rubbish, but wouldn't it be nice to divert more waste for recycling and reuse than simply being buried in a landfill?

Contents from your green and yellow-lidded bins are sent to the Lismore Materials Recycling Facility (MRF) for resource recovery and processing.

MORE ABOUT SOFT PLASTICS

According to Clean Up Australia, Australians use in excess of 6.9 billion plastic shopping bags every year and only about 10% are recycled. These bags can theoretically take up to 1,000 years to degrade.

There are some mixed messages out there about plastics as different Council's may recycle different materials depending on the recycling facility they use.

To make sure that we're not mixing our waste with our recyclables, let's look at how Ballina Shire's soft plastics are handled.

The Lismore MRF will separate bagged soft plastic which is then sent off for reprocessing. This is a manual process, so in order for this to happen, all soft plastics need to be bagged. Loose plastic will get caught in the recycling machinery and contaminate other recycling streams.

Soft plastics are items such as clean cling wrap, plastic bags, biscuit packaging (outer wrapper), bubble wrap and frozen food bags. Only clean plastics can be recycled. Soiled plastic should go in the red-lidded bin.

Please note – anything with foil lining such as chip or some biscuit packets, washing powder wrappers should NOT be included in your soft plastics bag. They belong in your red-lidded bin.

RULE 1



BAG THE BAG

You can now recycle plastic bags and all soft plastics including cling wrap, fruit and vegie bags, bubble wrap and soft packaging from toilet paper etc. Place them in a white plastic bag and tie them up.



FREE asbestos testing... don't play renovation roulette

Ballina Shire Council in partnership with North East Waste is offering householders FREE asbestos testing as part of a trial program aimed at reducing the unsafe removal of asbestos by home renovators.

If you are planning renovations and your house was built prior to 1990 it potentially contains asbestos cement products, especially in the eaves, external and internal wall cladding, ceilings (particularly in wet areas like bathrooms and laundries) and fencing. It is not possible to find out whether a material contains asbestos just by looking at it. Laboratory testing is the only accredited means to correctly identifying asbestos.

If you are in doubt, use this program and get the materials tested.

The program offers up to two samples per household and residents can access the program by presenting their rates notice at Council's Waste Management Centre.

Challenge yourself!

One of the best things we can do for the environment is simply reuse, or better yet, refuse a plastic bag when we go shopping. Easy!

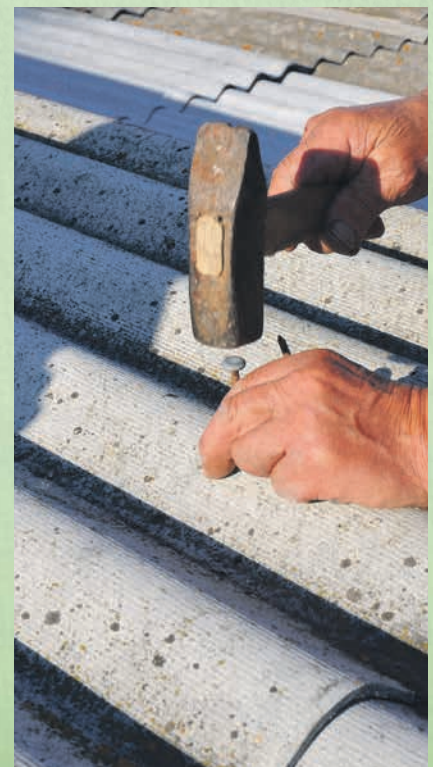
MYTH BUSTERS

**ASBESTOS WAS NO
LONGER USED IN
AUSTRALIA FROM 1985.**

FALSE.

The majority of Asbestos (90%) used throughout the world, including Australia, was white asbestos. Australia banned the use or import of BLUE and BROWN asbestos in the mid 1980s, and banned all manufacture or import of WHITE asbestos in December 2003. Some houses built in the 1990s and early 2000s may have still used asbestos cement materials until the total ban on any activity involving asbestos products became effective from December 2003.

If you have any other questions you would like clarified please email Council at mythbusters@ballina.nsw.gov.au





feature film shot in ballina premieres in october

Ballina is one of the stars of a new Australian feature film that will have its premiere in the town in late October.

Burns Point is a 95-minute, drama-thriller that was filmed in various locations around the Ballina Shire.

Writer-producer Chris Blackburn said he was pretty sure it's the first time a full movie has been shot entirely on location in Ballina Shire.

"The movie's opening shot is on the South Ballina seawall and from there the story moves into the cane fields of Wardell and into Ballina itself," Mr Blackburn said.

"It makes such an amazing backdrop to the story with the Richmond River and the coast. The Burns Point Ferry, from which the movie takes its name, is also heavily featured."

The film was selected to play at the prestigious CinfestOZ festival in Western Australia last month and will begin its theatrical run with an evening red-carpet premiere at Ballina Fair Cinemas on **Thursday 27 October**.

The film is a father and son effort between Chris, who lives at Empire Vale, and his son Tim who directed two shorts that made the finals of the renowned Tropfest short film festival.

Burns Point is Tim's debut as a feature film director.

It stars Andrew Lowe (Gallipoli stage show, Ashburn Waters), Francesca Bianchi (Colour of Eden, House Husbands, Educating Rita stage show), John McNeill (Underbelly, Blue Murder, Candy), Ron Kelly (Sea Patrol, Chronicles of Narnia, The Horseman) and Brad McMurray (Pawno, Neighbours).

Some of the stars will be at the dress-up October 27 premiere which will be followed by a question and answer session with the writer and director where people can get the inside story on the making of the film.

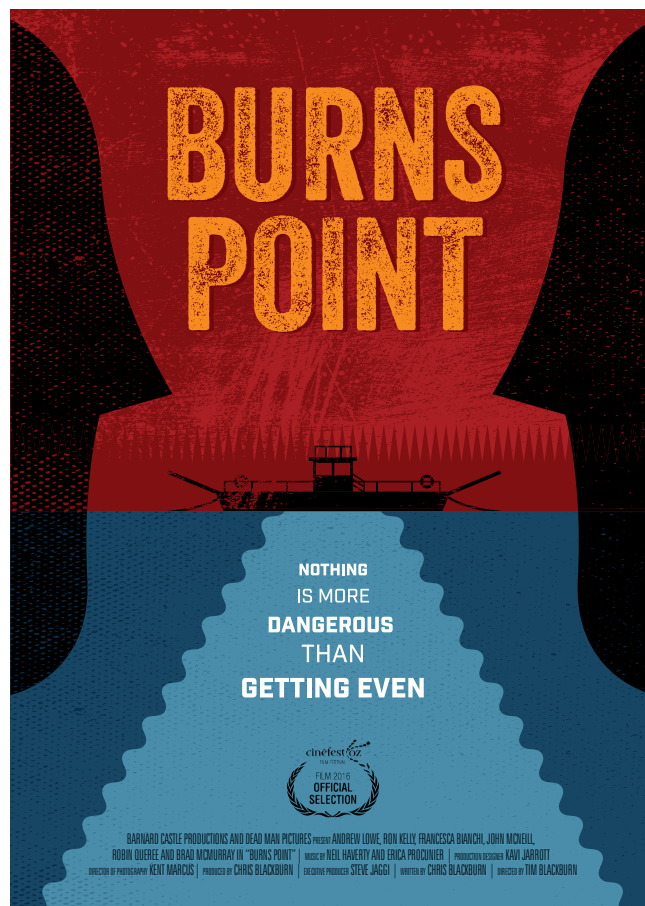
The premiere will be followed by regular screenings at the Ballina Fair Cinemas. There will also be two Q&A screenings at the Lismore Star Court Theatre on Sunday November 6.

"One of Australia's smallest post offices, the tiny wooden building opposite the Empire Vale Public School, makes a cameo appearance as does the actual postman Gary Carr," Mr Blackburn said.

"Another scene was shot at Patches Beach and there are driving scenes in the centre of the town.

"We were amazed and so grateful for all the help we received. People lending us cars and houses and a lot of cooperation from Ballina Shire Council and Ballina Police.

"I'd recommend Ballina as a place to come to any other filmmakers looking for a friendly and spectacular setting."



You can see the Burns Point trailer at burnspointmovie.com

If not already sold out, tickets to the premiere of Burns Point at Ballina Cinemas on Thursday 27 October are available from:

- Ballina Fair Cinemas
- The Design Space, 2/81 Tamar Street
- Sublime Clothing, 138 River Street
- Wardell Post Office
- Empire Vale Post Office

Tickets \$28 includes glass of champagne and nibbles. Meet the actors and director for a Q&A afterwards.

contact information

- 02 6686 4444
02 6626 6954 (After hours)
- council@ballina.nsw.gov.au
- ballina.nsw.gov.au
- 40 Cherry Street, Ballina
- PO Box 450, Ballina 2478
- Office Hours:
8.15am – 4.30pm
Monday – Friday
(excluding public holidays)

Council's Community Access Points:

Meeting agendas and documents on exhibition can be viewed at Council's Customer Service Centre; Alstonville, Ballina and Lennox Head Libraries and Council's website ballina.nsw.gov.au

DISCLAIMER

© Land & Property Information 2016

Although all care is taken in the preparation plans and maps in this document, Ballina Shire Council accepts no responsibility for any misprints, errors, omissions or inaccuracies. The information contained within these plans and maps is for pictorial representation only. Do not scale. Accurate measurements should be undertaken by survey. Ballina Shire Council acknowledges and appreciates the photographers who have supplied images for use in this issue of Community Connect: Tony Partridge, Maria Butler, Peta Lyn-Dali, Chris Nott of CN2480, Lyndal Moody, Anthony Acret and Trevor Worden.



Don't dispose of me yet

Use this issue of Community Connect to wrap kitchen waste and dispose in the green organics bin.