



community connect

the newsletter of ballina shire council

inside

public artwork



saving the coastal fontainea



rural character statements



launch of new visitor guide



aussie spirit alive in ballina



OUR DEDICATED VOLUNTEERS

Ballina Shire Council joined thousands of organisations around Australia to mark the 25th anniversary of National Volunteer Week in May 2014. This year's campaign theme "Celebrate the Power of Volunteering" is all about appreciating and understanding the work of volunteers in communities across the nation.

As a gesture of Council's appreciation for **its own volunteers**, a morning tea was held to thank the valuable contribution of Council's 140 volunteers; whose skills and knowledge are used in a variety of settings including the Northern Rivers Community Gallery, Ballina Visitor Information Centre, Ballina-Byron Gateway Airport, the Community Participation Program (Garden Program), Landcare and Dunecare Groups and Broadband for Seniors.

Mayor David Wright said "Ballina Shire Council is thankful for the valuable contribution of its volunteers. Volunteers make a huge difference in our community, helping in our schools, sporting clubs and service organisations, aged care facilities and on environmental projects."

A recent study from Volunteering Australia identified that the two main reasons why people volunteer is the *sense of purpose it gives them and the difference they make to their community.*

"Although **Council's Community Participation (Garden) Program** is a newly established initiative, its hardworking volunteers, **Liz Griffiths, Libby Gibbs, Margaret Trees and Kathy Platt**, are making real progress in beautifying the Shire's gardens," says Lucas Salmon, Council's Vegetation Management Coordinator.

Liz Griffiths has been volunteering in the **Community Participation (Garden) Program** for six months. "Part of our role includes picking up the rubbish that accumulates in the gardens, weeding, replanting, watering, mulching and maintaining the gardens at the Lennox Head Cultural & Community Centre. What I like most about volunteering, apart from the people you meet and work with, is the personal satisfaction of giving back to your community. *Story continued on Page 3.*

Object of the Story wins at the Local Government Arts and Culture Awards

One of the Ballina Shire Council's most interesting projects has won a major NSW Arts and Culture award. *The Object of the Story: Reflections on place* project won the "Community Participation – Creative Ageing" section of the 2014 Local Government Arts and Culture Awards. This award was sponsored by the NSW Office for Ageing.

The Object of the Story exhibition was held at the Northern Rivers Community Gallery in Ballina last year. It was a collection of photos, precious personal items and stories told mostly by Aboriginal community members about special objects they cherish and how those objects connect them to the Ballina Shire and the community.

The project was a joint venture between the Council and the Jali Local Aboriginal Land Council and was funded by the Federal Government's "Your Community Heritage" program.

Congratulations to everyone involved in the project, especially those people who told their stories and shared their memories. A book, containing the stories and pictures of people's lives, was also produced. Copies are available at the Northern Rivers Community Gallery, 44 Cherry Street, Ballina.





contents



9



17



10



19

Our dedicated volunteers	1
Object of the Story wins award	1
From the Mayor's Desk	2
Can you cut that down?	4
Scooter wise	4
Landscape Student of the Year	4
Regional Achievement and Community Awards	4
4WD Permits – Seven Mile Beach	4
Café Corner	5
Mythbusters	5

Road projects	6
Ballina Lennox Coastal Connection – Update	6
People Poll	7
Community Events	8
Arts Connect	10
What to do during the School Holidays	12
Staff Profile – Lee Mathers, Northern Rivers Community Gallery	13
Group fitness & boot camps on public land	14
Register your pet – it's cheaper than a fine	14
On the Edge – Saving the Coastal Fontainea	14
Rural Character Statements	15
Aussie spirit alive in Ballina	15
Launch of New Ballina Coast & Hinterland Visitor Guide	15
Water Talk – Issue 25	16
Waste Watch	17
Compostable nappies not allowed in green bin	17
Green Bea – Officer for Environmentally Cool Things	18
Construction commences on aviation fire station	20
CBD parking restrictions	20
Future Ballina	20
The Blackwall Bugle goes digital	20
Dob in a Dumper	21
School debating	21
Public artwork – Chickiba Lake Sewerage Pumping Station	21
What's on at your local community facility	22
Market calendar	23
Wollongbar Estate – Land Sale	24



FROM THE MAYOR'S DESK

Cr David Wright

"After the recent wonderful weather, it was good to see we have had some cooler days in recent times. Please keep safe and enjoy the benefits of living in one of the best places in Australia."

Firstly, I would like to congratulate former Mayor, Phil Silver and Fire Brigade stalwart, Kevin Gray, for their recognition of service to the community in the recent Queen's Birthday Honours. Both men have worked tirelessly for the Shire for many years and are very worthy recipients.

These two men exemplify many in our community. This is the time of the year when I attend many change-over dinners for a wide variety of service clubs in the Shire. There are so many people who willingly give up their valuable time to help others.

One volunteer group that recently springs to mind, and please forgive me for singling one group out, are the blue shirted Lennox Head Lions volunteers.

They provided a BBQ, three days in a row, at the tree planting day at Pat Morton on a Friday, 'Love Lennox' on a Saturday and the Lennox Head Markets on a Sunday earlier in June.

Well done and thank you for the much needed sustenance for people attending these events.



OUR DEDICATED VOLUNTEERS CONT.

"It is very satisfying now walking past the Centre and seeing the progress that has been made since we commenced our gardening efforts there. Taking ownership for some aspects of the community in which you live, I believe, helps make our communities better places in which to live and enriches our lives. Thank you to Lucas who has been a great mentor to us during that period!" Liz said.

Jan Warr has been volunteering at the **Northern Rivers Community Gallery, Ballina** for about two years. Part of the role includes greeting visitors to the Gallery and answering questions about the current exhibitions and artists. Jan says that volunteering at the Gallery is a perfect retreat for her and something she really enjoys "it is such a beautiful Gallery and Ballina is fortunate to have such a facility. I've always been interested in the arts, so volunteering at the Gallery held a natural attraction for me."

Ros Mayberry has been an **Ambassador at the Ballina Byron Gateway Airport** for about twelve months and also volunteers at the **Ballina Visitor Information Centre**, greeting and welcoming visitors to our region. Ros says, "the best thing about being an Ambassador is promoting our beautiful Shire – I love Ballina! I get great enjoyment sharing with our visitors what our town and Shire have to offer."

Council also hosts Broadband for Seniors; computer and internet training for seniors at the Lennox Head Cultural & Community Centre. Council's Manager Community Facilities and Customer Service, Jordan Robinson, would love to see more people volunteer in this program. "There is a huge demand from people wanting to undertake this course but we are short on volunteers. We would like to hear from anyone who can teach computer and internet skills and who can spare a couple of hours each week."

If you are interested in joining one of Ballina Shire Council's volunteering programs, please visit Council's website ballina.nsw.gov.au or telephone Council on 6686 4444.



Image: Tony Partridge

Council recently recognised those special volunteers who directly help Council deliver services to our residents. Without their help, the Gallery, the Airport, the Visitor Information Centre, the Garden Program and the Coastal Dune and Landcare rehabilitation areas wouldn't deliver the same level of service. I was also fortunate to recently attend an award ceremony for the orange-shirted SES volunteers. Many were recognised for their bravery in the fierce storms of 2012 and 2013. Another huge congratulations to this dedicated band of men and women.

Ballina has been recognised by the State Government as a regional growth centre. So to plan for the future, \$200,000 from the State Government and \$50,000 from Council is being used in an 18-month community consultation through the Ballina Major Regional Centre Strategy Futures Forum. The first step was undertaken recently and when the community ideas presented at the Forum are refined, I urge all residents to visit the Council website to have a say in the future planning of Ballina and its surroundings. Initial ideas discussed included: cultural activity, housing options, management of potential climate change impacts, transport links and improvements, food production

opportunities, appreciation of the natural environment, utilisation of the river and employment opportunities.

Councillors and staff have spent many meetings planning for the 2014/15 financial year. The Delivery and Operational plan is available on Council's website, and shows our income and expenses over the next four years. In the next few months Council will be consulting with the community regarding a 2.5% rate rise in 2015/16 and another 2.5% rise in 2016/17. These increases will fund upgrades to the Ballina and Alstonville swimming pool complexes. As upgrade expenses are estimated at \$8 million, these two rate rises are the only way that both facilities can be upgraded with new environmental technology and the community wants of heating and pool covers.

After the recent wonderful weather, it was good to see we have had some cooler days in recent times. Please keep safe and enjoy the benefits of living in one of the best places in Australia.

St Wright



CAN YOU CUT THAT DOWN?

Some people may not know that trees on private property require a DA for their removal if they are over six metres tall. However if the tree is listed as a weed species such as a Cocos Palm or Camphor Laurel, it is exempt. Some residents may be inclined to prune or remove trees on public land but this is not permitted under Council's Urban Vegetation and Tree Management on Public Land Policy.

If you are unsure about the trees you can cut down or trim call Council on 6686 4444 and speak to our staff.



Scooter Wise

HOW TO SAFELY USE YOUR MOTORISED SCOOTER



Are you a NEW motorised scooter user?
Are you thinking of BUYING a motorised scooter?
Then this motorised scooter education and introductory training is for you.

The workshop will cover:

- Your rights and responsibilities
- Essential abilities and skills required to use a scooter
- Choosing the right scooter
- Travel safely on your scooter
- Practical training provided

Dates:

- Wednesday 2 July
- Wednesday 6 August
- Wednesday 3 September

Time: 10.00 am – 12.00 noon

Venue: The Richmond Room
Regatta Avenue, Ballina

Maximum 5 persons per session. Morning tea provided



Bookings essential for these free workshops

CONTACT

Jodie Hewett

Road Safety Officer

Ballina Shire Council

Ph: 6686 4444



Landscape Student of the Year

Well done to Ballina Shire Council's Andrew Jones who has been named the Wollongbar TAFE Campus Landscape Student of the Year.

Andrew is an apprentice in our Open Spaces and Reserves section and was presented with the Award at the Wollongbar Campus Awards of Excellence ceremony in May.

Manager of the Open Spaces and Reserves team, Cheyne Willebrands, said Andrew deserved the award for his hard work.



Andrew Jones (left) being presented award by Michael Sullivan from Richmond Sand Gravel and Landscaping – Award Sponsor

REGIONAL ACHIEVEMENT AND COMMUNITY AWARDS

Nominations for the Regional Achievement & Community

Awards for NSW and the ACT are open. This is an opportunity for community groups, businesses and individuals to receive recognition and acknowledgement for a job well done.

Previous finalists from the Ballina Shire include Australian Seabird Rescue, Tweed Byron Ballina Community Transport, East Ballina Lions Club and the Ballina Chamber of Commerce & Industry.

This year PRIME7 and the Commonwealth Bank are giving away fantastic prizes including television advertising and six packages of \$5,000 in prize money!

Nominating is free and easy, visit www.awardsaustralia.com before nominations close 31st July 2014.

4WD Permits – Seven Mile Beach

Due to the short-term closure of the Lennox Head Caltex Service Station, 4WD permits for Seven Mile Beach are available from the East Ballina Caltex Service Station on Links Avenue (adjoining East Ballina Shopping Centre).

Permits are also available at Council's Customer Service Centre (40 Cherry Street, Ballina) and Ballina Visitor Information Centre (6 River Street, Ballina).





Café Corner

Ballina Gallery Café

Malcolm and Kylie Hamblin have now sold this business to Anastasi ("Stasi") Foukkare and Tracey Burns. The Hamblins commenced the Gallery Café from scratch and in the five years they operated the café they developed a strong partnership with the Northern Rivers Community Gallery as both the gallery and café are fully integrated with each other. We would like to wish the Hamblins well in their next venture. Stasi and Tracey are looking to continue this tradition of fine food mixed with the cultural benefits of visiting the Northern Rivers Community Gallery.

Shelly Beach Café

The lease provided by Council at this location is for the land area only. Council does not own any fixtures on the land with all fixtures owned by the tenant. The new owner of this business has had building plans for the development of a fully enclosed café at this location approved by Council however their redevelopment encroaches onto neighbouring Crown Land. Council has made application through the NSW Division of Local Government to acquire this portion of Crown Land in accordance with the Land Acquisition Act (Just Terms). The estimated timeframe for the completion of this land acquisition process is approximately three months away, however as it involves Crown Land a number of technical matters could still potentially delay that process. Once the acquisition is finalised the new owner is in a position to immediately commence construction of their new café.

Fawcett Park Café

A lease has been signed with a new tenant for this café. The tenant is currently undertaking extensive refurbishment works and creating outdoor dining areas and hopes to be open for business in the next couple of months.

Lighthouse Beach Café

The Lighthouse Beach Cafe, at the Ballina Surf Club has been operating since December 2013.

Owners Dale Parker, Karen Sinclair, Peter Sinclair and their staff offer locals and visitors to Ballina a relaxed dining experience with amazing views over Lighthouse Beach.



MYTH BUSTERS

WHEN WILL THE WALKWAY LINKING BALLINA WITH MISSINGHAM BRIDGE BE REBUILT, SPECIFICALLY THE NARROWED SECTIONS NEAR THE SPIT?

This section of walkway will be widened in the next financial year 2014/15. Sorry for any delays with these works.

WHY HASN'T THE NEW SERVICE CENTRE BEEN BUILT AT THE TEVEN ROAD INTERCHANGE YET?

Council approved a development for the land on the south eastern corner of this interchange at our June 2011 Council meeting. That development consent was for the construction of a Highway Service Centre comprising a Service Station, associated fast food restaurants, an auto repair centre, along with car and truck parking. As Council has provided planning approval for the development it is now a matter for the development proponents to undertake this development.

The Roads and Maritime Services (RMS) is aware of the importance of providing service centres at key locations along the Pacific Highway where towns have been bypassed. In response to this and partly due to the uncertainty over the timing of the approved Ballina centre, the RMS has recently called expressions of interest for interested parties to develop, operate and maintain two new highway service centres on the Pacific Highway, on RMS owned sites, one near Ballina and one near Nambucca Heads. The Ballina RMS site is located on the north western side of the Teven Road Interchange (i.e. the existing truck stop).

Council's role in the development of these centres is as a planning authority and only time will tell which of the proposed centres is eventually constructed.

ARE THERE STILL WORKS TO BE COMPLETED AT THE BALLINA SURF CLUB?

There is still a major storage building to be constructed at the eastern end of the car park. That building will provide storage facilities for the Ballina Lighthouse and Lismore Surf Lifesaving Club, along with a space for a gym for the members of the club and toilet facilities. Tenders are expected to be called for that building during August / September with works to commence around October / November this year.

IS COUNCIL INTENDING TO DREDGE NORTH CREEK?

The NSW State Government through the Department of Trade and Investment, provides the licences for dredging in waterways. Due to significant siltation in North Creek, in 2013 Council asked Trade and Investment if North Creek could be dredged, particularly the area between Missingham and Prospect Bridges. In response to this Trade and Investment commenced an expression of interest (EOI) process for interested parties to remove sand from this location, with there being a possibility of that sand being available for sale as a valuable resource. Council subsequently submitted a response to this EOI with the outcomes from that process likely to be known during July. The successful respondent, as determined by NSW Trade and Investment, will then need to seek all the necessary planning approvals to allow dredging to take place and to have the sand removed. This approval process may take a considerable period of time.



Road Projects

Swift Street Bus Exchange

The bus exchange in Swift Street is to be upgraded in the June/July school holidays. New shelters will cover all the bus bays which are used by a number of local schools. This project is expected to cost approximately \$370,000 which will be funded by Transport for NSW.

Links Avenue, East Ballina

A new footpath is being built on the eastern side of Links Avenue at East Ballina which will link up to the existing pedestrian crossing at Southern Cross School. This will eliminate the need for students to cross the road making the area much safer for children.

Missingham Park/Farmers Market

Carpark pavement and drainage works have commenced at Missingham Park in Ballina, the site of the weekly Sunday Farmers Market. The construction works will improve vehicle access, parking and drainage.

Tamar Street

The footpath on Tamar Street, between Grant and Kerr Streets, is to be replaced. Work on this project is due to start in July.

Tuckombil Road

Tuckombil Road was officially reopened to traffic in April after road works improved what was a dangerous "blackspot" area. This \$620,000 project was jointly funded by the RMS. We appreciated the cooperation and patience of local residents and other regular users of the road. Council sought to minimise inconvenience to the public during the construction phase/road closure and managed to finish the project six weeks ahead of schedule.



BALLINA LENNOX COASTAL CONNECTION - UPDATE



One of Council's major priorities is to connect Ballina to Lennox Head via a shared path for pedestrians and cyclists. This year should see the completion of a number of sections. The entire project is estimated to cost \$6.7million with works to be carried out in stages as funding becomes available.



Work has started on the shared path from **North Angels Beach, along the western side of the Coast Road to the Sharpes Beach underpass at Skennars Head** (see the green coloured line on the map above). The estimated cost for this section is \$600,000, with 50% funded by Council and 50% by Roads & Maritime Services.

Frequently Asked Questions

What is a shared path? The term shared path is used to describe a path designed for many different people including cyclists, pedestrians, people with prams and people in wheelchairs. This term is somewhat different to a cycleway, which is normally a lane to the side of a road where cyclists are able to safely ride beside traffic.

What is a coastal walk? A coastal walk is a defined pedestrian path that can be built of materials other than concrete or bitumen such as crushed aggregate or timber.

Is the shared path between Ballina and Lennox Head going to be a direct route following the current Coast Road?

Council is building a series of shared paths that interconnect. A description and map of the planned stages can be downloaded from Council's website ballina.nsw.gov.au

For more information and updates visit:
ballina.nsw.gov.au/ballinalennoxcoastalconnection



Sally Nicholas

What do you like about living in Ballina Shire?

Our family is relatively new to the area and we love the SPACE; particularly the waterways and the parks.

We enjoy the outdoor activities at Missingham Park, the Shelly Beach Run and Nippers.

What can Council do to improve the lifestyle you have in Ballina Shire?

We're pretty happy at the moment, the only gripe I really have is the maggots in the general waste bin. I would love to see it collected weekly.

Council's response:

Our overall waste strategy, which is based on directives from the State Government, aims to minimise any waste going in the general waste bin, as this is the waste that normally ends up in landfill.

Landfill comes at a significant cost to the community, with Ballina Shire's last remediation and expansion of our landfill costing around \$10 million.

Therefore by placing as much waste as we can in the organics and recycling bins we are all making a significant difference to the life of our existing landfill.

Unfortunately studies show that if the general waste bin is provided weekly, more waste will end up in that bin.



Miriam Sims

What do you like about living in Ballina Shire?

I love the freshness and ease of living in Ballina. As a coastal country town it offers me so much of what I need. It is good to be able to enjoy the ocean, river, hills and the green of the area, as well as the convenience of in-town necessary services and amenities.

What can Council do to improve the lifestyle you have in Ballina Shire?

Create new children's playgrounds and upgrade some existing ones. East Ballina is sadly lacking any exciting playgrounds, which is disappointing for me as a grandparent. The playground on the river at Fawcett Park is in a beautiful setting but it needs to be completely fenced and the playground in Commemoration Park, also in a beautiful spot, could be improved greatly with a shade covering.

Council's response:

Council has resolved to increase the funding for playground equipment replacement to \$200,000 for the 2014/15 financial year. This level of funding, if not more, is needed on an on-going basis to improve the standard of equipment. A lot of the replacement work is driven by risk management practices as this is one area where councils are subject to public liability claims for injuries incurred on the equipment.

Shade covers are strongly supported but they are subject to vandalism which is why we provided a more permanent type of cover at the Missingham Park.

Also for Fawcett Park we had an insurance inspection undertaken as to what level of fencing should be provided. The advice we received was that the southern section of the playground should be fenced and that work was undertaken a few years ago.



Louisa Ross

What do you like about living in Ballina Shire?

I am so fortunate to live around pristine beaches and beautiful scenery. Thanks to our local farmers, we have fresh produce at our fingertips.

We also have a good sense of community spirit which makes living in the Ballina Shire so wonderful

What can Council do to improve the lifestyle you have in Ballina Shire?

Would Council consider providing art or craft sessions in our Gallery after school one day a week or one weekend a month rather than waiting for school holidays...kids have a great interest in arts and crafts.

Council's response:

The Northern Rivers Community Gallery conducts a wide range of activities and our Gallery Co-ordinator, Ms Lee Mathers, is always interested in hearing from members of the public on ideas

that will assist with expanding the range of visitors to the gallery.

We encourage people to contact Lee direct to canvass opportunities for the gallery as that will allow Lee to determine whether we have time available for these activities and whether there is sufficient demand from the broader community.



Peter Loquet

What do you like about visiting Ballina Shire?

It's aesthetically lovely with pristine waterways. I'm a bike rider and I enjoy using the great network of bike paths.

What can Council do to improve Ballina Shire?

Overall I think Council is doing a pretty good job. From a visitor's point of view much could be done to improve the cleanliness of some of the facilities for example the picnic tables and chairs leave a lot to be desired.

Council's response:

Thank you for this feedback and the information provided has been referred to our Open Spaces and our Trades Sections to see if we can improve our existing service levels. Ideally if you have concerns about any particular location either email us or telephone our Civil Services Group and we will see if we can lift our standard of cleaning, or possibly even replace the equipment in any areas identified as being below an acceptable standard.

Skullcandy Oz Grom Open

4 – 9 July 2014

Lennox Head

skullcandyozgromopen.com.au



Photographer: Hayden Briggs

The Skullcandy Oz Grom Open will be held at Lennox Head from the 4-9 July 2014. It is one of the most highly anticipated junior surfing events in Australia. The event was founded in 2012 by the LE-BA Boardriders Club who wanted to stage a competition which offered an exciting and innovative contest of the highest standards that had never been seen before in junior surfing.

This year's event has again attracted some of the biggest names in junior surfing in Australia and beyond. We welcome all competitors and their families to Lennox Head and trust you will enjoy the contest, and enjoy your stay.

NAIDOC Week

6 – 13 July

Various locations in Ballina

ballina.nsw.gov.au



6-13 July
2014

**SERVING COUNTRY –
CENTENARY & BEYOND**

NAIDOC Week celebrations begin in the Ballina Shire on Sunday 6 July. The Annual Celebration Walk will take place on Monday 7 July starting in front of the Ballina RSL Club at 11:30am. It will proceed along River Street to the Ballina Visitor Information Centre where an official flag raising ceremony will be held. Refreshments will then be served in the Richmond Room.

All members of the community are invited to participate in the walk and following activities. The Bullinah Goori Services Action Group has arranged a full program of activities for NAIDOC Week. More information is available on Council's website.

Ballina Fine Wine and Food Festival – Bigger, Brighter, Better

Sunday 20 July, 12 noon to 5pm

Ballina Jockey Club, Racecourse Rd, Ballina

ballinafinewineandfoodfestival.com.au



Get ready for a fun and relaxing afternoon celebrating the best in gourmet food, wine, beer, and entertainment. This premier event is organised by the Rotary Club of Ballina-on-Richmond. Come and meet My Kitchen Rules favourites Paul and Blair who will demonstrate their culinary creativity by showcasing a variety of tantalising dishes. Add into the mix displays by local restaurants, cafes, cottage industries, food producers and wineries and expect one fantastic festival. The festival is the perfect place to sample new food and wines with the option to buy tasting plates and bottles of wine and beer to drink at the festival or purchases can be enjoyed at home. All activities are undercover making it an all-weather event for patrons to enjoy.

The event was a sell-out last year, so this year the festival is going to be bigger, brighter and better than ever. Tickets are \$20 with entry for 18 years and older only. Tickets are available online or at Tonic Hair Body Beauty, River Street, Ballina. A limited number of tickets will be available at the gate.

Ballina Home Sweet Home Expo

Saturday 26 July, 9am – 5pm

Ballina RSL Club

ballinahomeexpo.com.au



The Ballina Home Sweet Home Expo is an event not to be missed by anyone wanting to build or buy a home, renovate, or invest in the Ballina Shire residential market.

More than 5,000 people are expected to attend the Expo where they can compare products for every nook and cranny of an existing home or new build as well as learn about services and technologies available in the Ballina Shire such as architecture and design, landscaping, energy efficiency, décor, lighting, conveyancing, insurance, lending, financial planning and much more!!

Celebrity guest, Jason Hodges from Better Homes and Gardens will judge the Tradies Challenge and run a workshop on landscape gardening which is one of many seminars and workshops throughout the day. There will also be stacks of products on display, GREAT giveaways and plenty of prizes up for grabs.

Ballina Shire is emerging as a major growth centre and now is a great time to look at home and investment options. The Ballina Home Sweet Home Expo is coordinated by Ballina Chamber of Commerce and Industry, supported by the Master Builders Association of NSW, and seed-funded by Ballina Shire Council.

Visit ballinahomeexpo.com.au for more information about this event and if you are interested in exhibiting make sure you register your business before Wednesday 9 July.



Ballina Hosts Prestigious State Lawn Bowls Finals

9 – 11 August

Ballina RSL Bowling Club, Canal Road

Ballina Bowling and Recreation Club, Cherry Street

In August the best Grade 6 team in each of the 16 zones scattered throughout NSW will be coming to Ballina to determine which of these is the champion team in the State. The Ballina RSL Bowling Club, in Canal Road, will host eight teams for a round robin of matches, and the other eight teams will battle it out at Ballina Bowling and Recreation Club in Cherry Street.

Round robin matches will take place at these two venues on Saturday morning and afternoon (9 August) and on Sunday morning (10 August). The top two teams from each venue will then meet in the semi-finals to be played on the RSL Club greens on Sunday afternoon. The final will be held at 9am on Monday 11 August at the Ballina RSL Bowling Club. Spectators are welcome. The standard of play will be very high.

2014 Emirates Melbourne Cup Tour

Saturday 30 August

ballinajockeyclub.com.au



The Ballina Jockey Club successfully tendered to host the Emirates Melbourne Cup Tour to coincide with the Club's 100th year anniversary.

The Emirates Melbourne Cup Tour will take in major cities, regional centres and towns around the nation.

On the road, the iconic trophy is accompanied by famed Melbourne Cup personalities and racing legends who share their personal stories of triumph and tribulation with the great race.

More details will be published in the Ballina Shire Advocate leading up to the event.

Rainbow Region Dragon Boat Regatta

30 - 31 August

Shaws Bay, East Ballina
rainbowdragons.com.au



The Rainbow Region Dragon Boat Regatta will be held at Shaws Bay from the 30-31 August 2014. Sports crews will contest a 1km Chase Race and 100m Splash 'n' Dash on Saturday afternoon, with a full day of 200m sprint racing on Sunday, involving dragon boat clubs from NSW and Queensland as well as community teams drawn from the local area. This is an officially sanctioned Dragon Boats NSW regatta, sponsored by the Shaws Bay Hotel. Spectators are very welcome to come along and experience this family-friendly no-alcohol sporting event.

Summerland House Farm Country Fair

Sunday 14 September, 9am – 3pm

253 Wardell Road Alstonville
summerlandhousefarm.com.au



The Summerland House Farm Country Fair is a North Coast celebration that gets bigger and better every year. With celebrity guests, market stalls, food from around the region, live music, rides and entertainment galore, the Country Fair on the beautiful Alstonville plateau is an event not to be missed. This year's celebrity guests include Sony Music's Nathaniel (roaring up the charts), Dora the Explorer, Paul and Blair from My Kitchen Rules, Jurassic Joe and the fabulous Aunty Hu Hu and the Big Lazys. Celebrate village life at the Summerland House Farm Country Fair on 14 September, 9am to 3pm.

SKULLCANDY OZ GROM OPEN

4 – 9 July, Lennox Head

Tony O'Brien 0434047726

sdcondon@lennoxhead.com

skullcandyozgromopen.com.au

NAIDOC WEEK

6 – 13 July, Various locations in Ballina

Holly Archibald 6686 4444

ballina.nsw.gov.au

BALLINA FINE WINE & FOOD FESTIVAL

Sunday 20 July, 12 noon to 5pm

Ballina Jockey Club, Racecourse Rd

Jodie Shelley 0427 287 627

orungalj@bigpond.net.au

ballinafinewineandfoodfestival.com.au

BALLINA HOME SWEET HOME EXPO

Saturday 26 July, 9am – 5pm

Ballina RSL Club

Nadia Elliott-Burgess 6681 5049

info@ballinachamber.com.au

ballinahomeexpo.com.au

GRADE 6 STATE PENNANT FINALS

9 – 11 August

Ballina RSL Bowling Club & Ballina Bowling & Recreation Club

Rex Soward 6686 3597

margrex@dodo.com.au

EMIRATES MELBOURNE CUP TOUR

30 August

Various locations

Matthew Betram 6686 2603

ballinajockeyclub.com.au

RAINBOW REGION DRAGON BOAT REGATTA

30 - 31 August

Shaws Bay, East Ballina

Juliette Sizer 0421 550 335

admin@rainbowdragons.com.au

rainbowdragons.com.au

SUMMERLAND HOUSE FARM COUNTRY FAIR

Sunday 14 September, 9am – 3pm

253 Wardell Road, Alstonville

Lisa Murphy 66280610

lmurphy@hwns.com.au

summerlandhousefarm.com.au

BALLINA COASTAL COUNTRY MUSIC FESTIVAL

3 – 5 October

Fawcett Park (Friday evening)

River Street CBD (Saturday)

All licenced venues (Saturday & Sunday)

Carol Stacey 0499 281 881

stacey.carol47@gmail.com

ballinacountrymusic.com

Event details will be published in September Issue of Community Connect.



arts connect

Art at the Airport – Emma Walker

Northern Rivers Community Gallery is excited to present the second series of works for the *Art at the Airport* program. The current exhibition at the Ballina-Byron Gateway Airport features three major works by leading contemporary Australian artist Emma Walker.

Emma Walker lives and works in the Northern Rivers and her work is found in various corporate and public collections such as Macquarie Bank, Lowenstein's Arts Management, Lismore Regional Gallery, Tweed River Art Gallery as well as numerous private collections in Australia, the United States, United Kingdom, Indonesia and Hong Kong.

Emma's works will be on exhibition until the end of June 2014.



Emma Walker with her painting *Oasis II* (2013)

See Page 13 for profile on our new Gallery Coordinator, Lee Mathers.



Northern Rivers Community Gallery (NRCG) is a key cultural institution within the Northern Rivers that delivers diverse arts and cultural programs that nurture and inspire our local arts community.

NRCG is a not-for-profit organisation endorsed as a 'deductible gift recipient'. The continued growth of our dynamic Gallery program relies on the generous support from individuals like YOU.

Donations of \$2 or more are tax deductible and a receipt will be issued.

For more information contact Lee Mathers on 02 6681 6167 or by email at leem@ballina.nsw.gov.au

CURRENT EXHIBITIONS

4 June to 29 June 2014

Take 6 – Group Exhibition by Arts Fabrika

Take 6 is a group exhibition by six local artists: Stephanie Lymburner, Merle Rankin, Sue Sawkins, Shirley Scholtz, Kate Williams and Utoska McLeod from the Arts Fabrika collective.

Inspired by the book *Twelve by Twelve - the International Art Quilt Challenge*, Arts Fabrika set themselves a similar challenge to interpret six themes chosen by each of the six artists in the group. The eclectic



themes of Coffee, Close-up, Horizon, Built Environment, Movement, Music and Colour were selected. Each artist has created a work in response to each of the themes in whatever style, technique and medium they chose, creating a group of works that are as diverse as they are similar.

Stephanie Lymburner,
New Season Pear, 2014

4 June to 29 June 2014

Shared Fragments in Time: stories in stitch and dye – Kirsten Ingemar & Enid Taylor

This exhibition showcases two talented artists', Kirsten Ingemar and Enid Taylor, love of textiles and its versatility as a creative medium.

Using age-old textile dyeing and stitch techniques, each artist intertwines fragments of both personal memory and the material history of their craft to create visually stunning and poetically powerful works. The artists lovingly create beautiful artworks by reusing, repairing and mending; a testament to the pleasure and satisfaction gained from repurposing instead of discarding unwanted materials.



Enid Taylor, *Boro Textile No. 2*, 2014





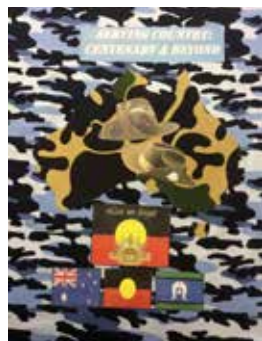
UPCOMING EXHIBITIONS

2 July – 13 July 2014

NAIDOC Week 2014 Group Exhibition

This exhibition coincides with NAIDOC Week celebrations and provides an opportunity for Aboriginal and non-Aboriginal Australians to join together to recognise the valuable contribution indigenous people have made to this country. It is presented in partnership with local Aboriginal organisations and the Bullinah Goori Services Action Group.

This year's theme is *Serving Country: Centenary & Beyond* in honour of the Aboriginal and Torres Strait Islander men and women who have fought in defence of country.



Bunjum – Culture Matters, NAIDOC Week poster competition artwork, 2014

16 July – 24 August 2014

Portraits of a Tea Cosy – Loani Prior & Mark Crocker



This national travelling exhibition is the culmination of a two-year journey initiated by yarn artist Loani Prior, aka Queen of Tea Cosies, and professional photographer Mark Crocker. The pair developed a rationale to use the tea cosy as a catalyst for dialogue on the joy of family tradition and owning something handmade.

Loani and Mark took to the road and travelled to Warwick, Miles, Hervey Bay and Brisbane in Queensland, Mittagong in NSW and Melbourne to meet with everyday people with a story to share. These gatherings provided the core material that has been used to create this wonderfully engaging exhibition; revealing that the humble tea cosy is a vessel that evokes nostalgic memories and deep familial love.

Photograph by Mark Crocker, *Steve Capelin and Andrea Lynch*, 2012

16 July – 24 August 2014

Parade - Katka Adams

Katka Adams' playful drawings depict adorned animals and domestic objects that capture the ceremony of tradition. Using a combination of vivid colour pallets and dramatic lighting each work isolates a moment of reverie for the everyday. This exhibition celebrates the existence of the ordinary and on a deeper level, explores the symbolism of a universal psyche and the human spirit.



Katka Adams, (L to R) *The Bath*, 2014; *Tinkerbell*, 2014; *Louis*, 2014

27 August – 5 October 2014

Equine Inspired

Horses have shared a close relationship with humans and have been our trusted companions throughout history, capturing our hearts and imaginations, horses are celebrated through story, verse and art.

Our upcoming October exhibition, 'Equine Inspired', brings together individual artists who hold a strong material or conceptual connection with these beautiful majestic animals. Coinciding with both Ballina Cup Day and Ballina Coastal Country Music Festival this exhibition presents an exciting selection of works in painting, sculpture, textile and millenary craft.

The participating artists are: Clare Barry, Julie Casey, Peter Mortimore, Wendy Powitt, Susanne Fraser, Ruth Park and Louise Fulton.

Clare Barry, *Barrell Racing at Maclean*, 2014



TWO DAY WORKSHOPS...FOR ADULTS

with 'Portrait of a Tea Cosy' artist Loani Prior

Saturday 19 July and
Sunday 20 July

Northern Rivers Community Gallery is excited to offer a unique 2-day adult workshop with 'Portrait of a Tea Cosy' artist Loani Prior on Saturday 19 July and Sunday 20 July 2014.

Loani's tea cosies are the haute couture of the gentle arts. She will share with you her voracious lust for colour, good design and beautiful wool. Tea Cosies are funny even when they are not meant to be funny AND a tea cosy is the perfect little project to learn a great number of knitting skills.

If you can knit a stitch and purl a stitch and cast on and cast off, you can join this class. If you consider yourself to be an advanced knitter and would like to lurch a great leap away from your woolly comfort zone, this might also be the class for you.

Be sure to book early as places are limited to 10. Cost is \$270 for the two-day workshop and includes materials and lunch. For bookings, contact the Northern Rivers Community Gallery on telephone 02 6681 6167.

Loani Prior, *Jimmy*, 2012



What to do during the *School Holidays*

Looking for something to do with the kids or grandchildren over the Winter school holidays? It's all happening in the Ballina Shire with lots of sporty, fun, creative and educational activities to keep the kids entertained.

EDUCATIONAL

Australian Seabird Rescue Tours

Daily Educational Tours
\$5 entry fee
10am - 11am
Monday to Fridays during school holidays
264 North Creek Road, Ballina
Ph: 6686 2852
admin@seabirdrescue.org
seabirdrescue.org

Crawford House Museum

Enjoy local history and displays in an original farmhouse
Open: Fridays 10am to 4pm
Sundays 1pm - 4pm
10 Wardell Road, Alstonville
Ph: 6628 5457
info@aphsmuseum.org.au
aphsmuseum.org.au

Ballina Library

Storytime (2-5yrs)
Tues & Fri 11am
French Knitting (8-12yrs)
Wed 2 July 2-3.30pm
Pom Pom Critters (5yrs+)
Thurs 3 July 10.30-11.30am
8 River Street, Ballina
Ph: 6686 2831
rtrl@rtrl.nsw.gov.au
rtrl.nsw.gov.au

Lennox Head Library Workshop

Build Your Own Shadow Puppet Theatre Thurs 10 July from 10.30am
Lennox Head Cultural & Community Centre
Ph: 6687 6398
rtrl@rtrl.nsw.gov.au
rtrl.nsw.gov.au

Ballina Naval & Maritime Museum

Explore the history & enjoy the extensive displays
9am to 4pm. Open 7 days
Regatta Avenue, Ballina
Ph: 6681 1002
ballinamaritimemuseum.org.au

FAMILY FUN

Amaze N Place

Free alpaca feeding every day at 11am plus lattice maze, puzzles, sandpit, cubby house and café
Open 10am - 4.30pm
28 June - 13 July
149 Wardell Road, Alstonville
Ph: 6628 6286
amaze-n-place.com.au

Ballina Tenpin Bowl

Holiday Special 2 Games for \$14 with Glow in the Dark Bowling
12-4pm. Open 7 days
16 Clark Street, Ballina
Ph: 6686 5342
ballinatenpinbowl.com.au

Macadamia Castle

Full program of daily activities, animal feeding & new Frog Pod Conservation Research Centre
8am - 5pm
Open 7 days
1699 Pacific Highway, Knockrow
Ph: 6687 8432
info@macadamiacastle.com.au
macadamiacastle.com.au

Summerland House Farm

Tractor ride, water spray park, gardens, playground, mini golf, heritage cottage, The Grocer & Café
9am-4pm. Open 7 days
253 Wardell Road, Alstonville
Ph: 6628 0610
summerlandhousefarm.com.au

Teven Valley Golf Course

Holiday Special Kids hire clubs free when playing with an adult
8am to dusk. Open 7 days
1684 Eltham Road, Teven
Ph: 6687 8386
tevenvalleygolfcourse.com.au

Thursday Plantation

Enjoy the Verandah Café, Rainforest Walk, Sculpture Garden and Tea Tree Maze
Weekdays 9am - 5pm
Weekends 10am - 4pm
Gallans Road, Ballina
Ph: 6620 5150
thursdayplantation.com

Victoria Park Nature Reserve

300m boardwalk loop with BBQ and picnic facilities in the picturesque "Big Scrub" remnant. Collect the 30 Great Walks brochure from the Visitor Centre for many more walks in the region.
Victoria Park Road, Dalwood

Richmond Princess River Cruises

Enjoy morning or afternoon tea aboard the Richmond Princess cruising the Richmond River
10am-12noon or 2-4pm
Wed and/or Sat/Sun
Bookings Essential
Regatta Avenue, Ballina
Ph: 0427 699 317
rrcruises.com.au

SPORTY FUN

Kayak Ballina

Guided Kayak Tours of Ballina's beautiful waterways. Basic skills lesson included
Daily. Open 7 days
Ph: 6681 4000
kayakballina.com

Tassiriki Ranch Beach Horse Riding

Daily tours. Open 7 days
Moylans Road, Empire Vale
Ph: 6683 4602
tassirikiranch.com.au/

Lennox Head Sport & Recreation Centre

Sailing for Beginners - \$55
Sailing Regatta Day - \$55
Surf Clinic - \$130
Lake Ainsworth Activity Day - \$55
7 -11 July
Info and bookings: 13 13 02
dsr.nsw.gov.au

Lennox Head Skate Park

Park Lane, Lennox Head

Missingham Skate Park

Kingsford Smith Drive, Ballina

Byron Bay Air Charters

Scenic Coastal Flights
Departs Ballina-Byron Gateway Airport
Daily Tours. Open 7 days
Southern Cross Drive, Ballina
Ph: 6686 4876
info@byronbayaircharter.com.au
byronbayaircharter.com.au

Classic Aero Adventure Flights

Take a scenic flight in a genuine ex-RAAF warbird plane.
Departs Ballina-Byron Gateway Airport
Daily Tours. Open 7 days
Southern Cross Drive, Ballina
Ph: 0432 318 282
classicaero.com.au

Sunrise Cycles

Hire a bike and ride along the Richmond River
Mon - Fri 8am - 5.30pm
Sat 8am - 2.30pm
3 Hogan Street, Ballina
Ph: 6686 6322
facebook.com/sunrisecyclesballinabyron

Transition Cycles

Hire a bike and ride along the Richmond River
Mon, Wed & Fri 9am - 5pm,
Thurs 9am - 5.30pm
& Sat 9am - 1pm
49 River Street, Ballina
Ph: 6686 6522
facebook.com/transitioncyclesballina

Kool Katz

Learn how to hang ten with surf lessons. All equipment provided.
Daily lessons. Open 7 days.
Ballina & Lennox Head
Ph: 6685 5169
koolkatzsurf.com

If you are hosting school holiday activities contact the Ballina Visitor Information Centre on telephone 1800 777 666 or email balinfo@ballina.nsw.gov.au to include your details on School Holiday Activities program. This is also made available to visitors via the website discoverballina.com



Mojo Surf

Learn how to surf or rent a stand up paddle board. All equipment provided.
Daily lessons. Open 7 days.
Ballina & Lennox Head
Ph: 1800 113 044
mojosurf.com

GET CREATIVE

Northern Rivers Community Gallery

Drop in for a self guided art making activity.
44 Cherry Street, Ballina
Ph: 6681 6167

Ballina Players

FunSing Workshop Concert - \$160
7 - 10 July
Swift Street, Ballina
Ph: 6681 1149 (Kim)
ballinaplayers.com.au

Kidz Klub at Lennox Head Cultural & Community Centre

2 - 4 July, 9 - 11 July
\$20 per session per child or
\$40 per child full day
Morning, Afternoon or Full Day
Bookings essential
1 Mackney Lane, Lennox Head
Ph: 6687 6291

Alstonville Dance Studio Holiday School

9 - 11 July
Contemporary, jazz, hip-hop and drama dance school with 3 special guest teachers.
Open to people with and without disabilities.
Ph: 0428 748 294

The Kids Shed

Art Classes for Crafty Kids
1 - 2 & 8 - 9 July
\$25 each workshop
52 Norton Street, Ballina
Ph: 0402 416 782

Riley Burnett Workshops

Beading 30 June & 8 July
Mystical Dolls 1 & 11 July
Dream Catchers 3 & 7 July
Craft chain jewellery & mobile making 4 & 10 July
Each class \$25
Morning tea & cupcakes provided
Ph: 6687 5739

community group focus on... ballina toy library

The Ballina Toy Library is a non-profit, community-based service that provides a cost-effective alternative to purchasing expensive toys.

Babies up to 6-year-olds are catered for with a large variety of toys including baby toys, puzzles, games, construction sets, musical toys, playsets and a range of Fisher Price and Little Tikes toys. For a small membership fee toys can be borrowed for a period of two weeks.

The Ballina Toy Library is located at 9 Regatta Ave, Ballina (Swimming Pool end of River Street, opposite the Ballina Naval & Maritime Museum) and is open Saturdays 10am to 1pm, Tuesdays and Wednesdays 11am to 1pm.

For enquiries contact Ann on 0411 719 074 or Alison 0428 866 273.



staff profile

Position with Council and some details about your duties in that position? Gallery Coordinator – facilitating the administrative, curatorial and financial operations of the Gallery

How long have you been with Council? 3 months

What aspects of your job do you like most? Working with stakeholders to develop innovative new programs that promote not only the Gallery but foster the sustainability of practicing artists in the region.

What were you doing prior to working for Council?

Developed, implemented and delivered a broad range of arts projects most recently with the City of Sydney Council as part of the Special Projects – Public Art team and previously with Indigenous design and public art studio the Jumbana Group as their Project Manager; and internationally renowned artist Janet Laurence. Whilst with the Jumbana Group I managed the development & delivery of the Jezzine Barracks Interpretive/Public Art (14.9 hectare) precinct in Townsville and the painting of a Qantas Boeing 737-800 with an Indigenous Artwork based on an original artwork by the late Paddy Bedford. I am also a multi-disciplinary arts practitioner with experience across exhibition, education and curatorial as both artist and facilitator in Australia, the US and the UK.

What do you like to do in your spare time? What spare time?

What's the best movie you've seen? Donnie Darko

Most amazing place you've been to? Harding Ice Field, Alaska

What music do you listen to? At the moment lots of Lana Del Ray but anything except heavy metal

What can't you live without? Chocolate

Where were you born and raised? Half City / Half Country – Born Sydney but shipped off to grandparents farm in Glen Innes or Tamworth every school holidays! Got the best of both worlds.

If I won a lot in the lotto I would... Buy my sister a hobby farm (she is like Dr Doolittle), then set-up my own studio in the Canadian Rockies and ski/make art in the winter and travel in the summer.

I wish I had a special talent for... Making music! So envious of people with talents to create art with lyrics and music!

GROUP FITNESS & BOOT CAMPS ON PUBLIC LAND

Commercial fitness businesses must have a licence to train people on public land.

Licenses for fitness groups and personal trainers ensure the trainers are suitably qualified, insured and respect other members of the community while using public spaces.

Information about how to get a fitness licence is available from Council's website. Enquiries James Brideson, Civil Services telephone 6686 4444.





register
your pet

Register your pet:
it's cheaper than a fine

All cats and dogs in NSW must be microchipped by the time they are 12 weeks old or before being sold or given away. They must also be registered with Council when they are six months old.

Council is currently conducting an audit of the NSW Companion Animal Register of all cats and dogs in the Shire and following up on those not registered.

Failure to microchip and register your pet may result in a penalty infringement notice of \$275. It is far cheaper to register your pet than cop a fine.

If you are unsure how to microchip and register your pet please phone our Rangers on 6686 1210 or visit our website ballina.nsw.gov.au

Thank you to the 155 community members that came out to the 12th Tree Planting Day and planted 1,000 seedlings on Lennox Headland. Images: Tony Partridge



ON THE EDGE - SAVING THE COASTAL FONTAINEA

Ballina Shire Council has been awarded \$99,250 from the NSW Environmental Trust and additional funding from the NSW Office of Environment and Heritage "Saving our Species" funding to help save one of the world's rarest trees. Until recently there were only 10 Coastal Fontainea trees in existence, all of them at Lennox Head.

The grant will be spent over three years as part of a project called *On the Edge: Lennox Head Littoral Rainforest and Grassy Headland Recovery Project*. Its aim is to ensure the future of the Coastal Fontainea as well as restore the natural habitat around Lennox Headland and Boulder Beach.

A recovery project involving the NSW Government, Ballina Shire Council, North Coast Local Land Services, bush regenerators and Landcare volunteers has so far been successful with more than 130 plants propagated from cuttings. They have been planted at various Lennox Head locations, and are also growing in the Lismore Rainforest Botanic Garden and the Australian Botanic Gardens.



Image courtesy of The Northern Star.



RURAL CHARACTER STATEMENTS

Thank you for your participation

During May over 150 community members attended meetings across the Shire to explore and discuss the special qualities, features and the uniqueness of their rural settlements.

From this community input Council is preparing rural settlement character statements for the Fernleigh, Tintenbar, Newrybar, Meerschaum Vale, Rous, Rous Mill, South Ballina, Keith Hall, Empire Vale and Patchs Beach areas.

These character statements will be used by Council to inform various planning processes over time.

Further information about the character statements will be available in the near future.

Enquiries: Suzanne Acret, Strategic and Community Facilities Group, Ph: 6686 1284.

Aussie spirit alive in Ballina

The friendly team at the Ballina Visitor Information Centre witnessed the start of an international friendship recently when Richard and Marilyn Elliot, a couple on holiday from Texas in the US, met George the plumber from Sydney.

Waving the Elliots goodbye in their RV, George caught sight of the local products on sale at the Visitor Centre and he couldn't resist buying some Emu jerkey for the Elliots to take on their travels. Worried he'd miss them, he bounded out of the Visitors Centre like a kangaroo, leaping into the middle of the road to bring their vehicle to a stop.

The Elliots were touched by this warm gesture and Aussie hospitality. This image captured the candid moment and was immediately shared on facebook here and across America.

The Ballina Visitor Information Centre is open 7 days (9am – 5pm), and stocks a wide range of regional produce and souvenirs and provides a gift hamper service.

See what's happening in your local area and follow us at [facebook.com/ballinacoastandhinterland](https://www.facebook.com/ballinacoastandhinterland).



The Elliots from Texas USA (left) and George Bailey from Sydney (right).

launch of new *ballina coast & hinterland* visitor guide



The new Ballina Coast & Hinterland Visitor Guide is hot off the press.

This popular glossy publication is an important tool used to encourage visitors to "Discover Ballina". Hundreds of copies were snapped up at the recent Brisbane Caravan and Camping Show. The guides are also distributed to Visitor Information Centres around NSW and interstate.

Tourism in our area continues to grow steadily and the increasing passenger numbers at the Ballina Byron Gateway Airport are breaking records. 400,000 people went through the airport last year making it one of the busiest in regional NSW.

The Visitor Guide is full of information about accommodation, tours, activities, maps, event & market guides and a local directory to inspire visitors to enjoy our piece of paradise and share it with their family and friends.

The Visitor Guide is complemented by the Dining Guide featuring local restaurants, cafés, clubs and pubs, takeaways and the many other special dining options across the Ballina coast and hinterland. The region is becoming known nationally and internationally as an award-winning area for high quality, fresh produce.

water talk

ISSUE 25

Hi, I'm Crystal the Recycled Waterdrop.

I'm excited to see water recycling in Ballina Shire is taking huge steps forward.

New households will be able to use recycled water on their gardens, in their toilets and cold water washing machine taps.

Some people are getting a bit confused by all the new water words. Here's what they mean....

Drinking Water also known as 'potable water' and means 'safe to drink' or 'drinkable'. Most of Ballina Shire's drinking water comes from Rocky Creek Dam and we use it to shower, cook, garden and drink.

Wastewater is all the water that leaves our home as waste. It may be 'greywater', 'blackwater' or more likely a mixture of both.

Grey Water is the wastewater from your sinks, showers, baths and washing machines.

Blackwater is the wastewater from your toilets.

Trade Waste is the liquid wastes from non-residential, commercial & industrial processes.

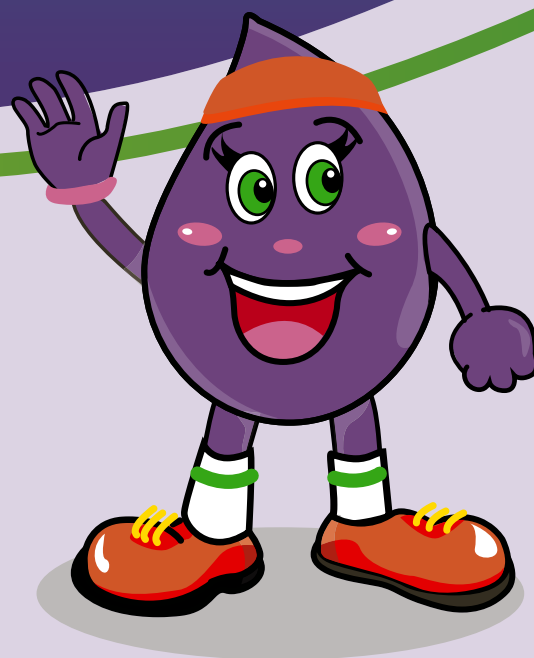
Wastewater Treatment Plants are also known as 'reclaimed water facilities' or 'sewage treatment plants'. Ballina Shire has four wastewater treatment plants which all have different treatment processes. The effluent (treated wastewater) that flows out of them can be reused for different purposes or released into waterways.

Waterways can include rivers, lakes, estuaries, seas, oceans, and canals.

Fit-for-purpose refers to the quality of water and what we can use it for.

Recycled Water is also called 'reclaimed water'. In Ballina Shire it refers to treated wastewater for non-drinking purposes such as industry, toilets, cooling towers, and irrigation of gardens, lawns, parks and crops.

Dual reticulation refers to properties which are supplied or have access to both standard drinking water and recycled water. 'Dual' means 'two parts' and 'reticulation' means a 'system of pipes'. Recycled water must always pass through purple pipes so it is clear the water has been recycled.



CRYSTAL KEEPS CHARITY WALKERS HYDRATED

Ballina's recycled water drop 'Crystal Clear' was at the Westpac Charity Walk a few weeks ago handing out drinking water to thirsty participants.

The purple water drop represents the new recycled water that will start flowing to housing estates hopefully towards the end of this year.

Some walkers were confused as to why a recycled water drop (not for drinking) was handing out drinking water. Ballina Shire Council's Water Education Officer Kate Pye was quick to explain the connection; "Recycled water can flush toilets, wash clothes and water gardens to take pressure off our drinking water supplies. The two types of water make a brilliant partnership".

For further information visit the water section on Council's website ballina.nsw.gov.au

Enquiries: Kate Pye, Water Education Officer, Ph: 6686 1458





waste watch

Meet some of Ballina Shire Council's Waste Management Officers. They are a great bunch of blokes who start work early emptying the bins and keeping the streets clean.

EZIO



How long have you been working for Ballina Shire Council? 17 years.

Brief life/work history I was born in Casino and grew up at Naughton's Gap. I worked on my parent's banana farm before taking a job at Hurford's timber yard where I worked for 7 years.

What annoys you about your job? When people call up and complain that I missed their bin but they really didn't have it out. This can't happen anymore as we've just installed new software in the trucks so we know if it's not presented.

What do you love about your job? Good working conditions.

Weirdest thing you've found in a bin? A Datsun 120Y Engine.

GREG



How long have you been working for Ballina Shire Council? 5 years.

Brief life/work history I was born in Camperdown in Sydney and moved to Ballina when I was one. I worked for Richmond Waste for 16 years and on a fishing trawler for a number of years prior to that. I've worked hard to give my kids a good education and am proud to say one has just finished Criminology and the other is studying law.

What annoys you about your job? Nothing – I love my job.

What do you love about your job? The nice guys I work with.

Funniest thing that's happened on the job? A woman ran out early one morning with her bin but forgot her pants.

NEIL (AKA WILBUR)



How long have you been working for Ballina Shire Council? 9 years.

Brief life/work history I was born on Cabbage Tree Island. My first job was working as a picker on a macadamia farm when it was done by hand. We got 80c per kilo and filled 20 litre buckets by picking them up off the ground. I then did a carpenter/joiner apprenticeship before working as a casual for Ballina Shire Council through an agency called IBL in Alstonville.

What annoys you about your job? When people park their cars in front of bins and our trucks can't get to them.

What do you love about your job? Kids coming out and waving at me like I'm famous. There is one little boy up at Knockrow who puts his miniature bin out just like his parents and is fascinated by the truck.

Craziest thing that's ever happened at work? My truck caught on fire because someone put a gas bottle in their garbage bin (Gas bottles must be safely disposed of at the Ballina Waste Facility for a small fee).

HARLEY



How long have you been working for Ballina Shire Council? 17 years.

Brief life/work history I was born in Bellingen and grew up in Bowraville. I left school when I was 15 to start work at my dad's sawmill. I had to make banana boxes which involved hammering 52 nails into each box and got paid 4 pence ha'penny per box. I soon wished I hadn't left school.

I joined the Public Works Department in 1967 and travelled NSW doing different jobs. One job involved doing a hydro optical survey of the Richmond River 35 years ago and I never left the area.

What annoys you about your job? People putting their bins too close together and the truck arms cannot get in between them.

What do you love about your job? Being able to work on my own for most of the day and the early finishes.

Weirdest thing you've found in a bin? A pig's head.



COMPOSTABLE NAPPIES NOT ALLOWED IN GREEN BIN

Currently our kerbside organic waste goes to Lismore where it is turned into compost. Market demand for "certified organic compost" means compostable nappies can no longer enter the organic waste stream.

Not allowing compostable nappies and human faecal matter is necessary to gain certification from Australian Organic Limited. Compostable nappies are still a better alternative to regular disposables as they break down in landfill, however they need to go into the red-lidded or dark green bin.

Compostable nappies are available at Nourish All Of You on Cherry Street and Ritchies IGA in Ballina.



Hi. Remember me?

I'm Green Bea, Ballina Shire Council's *Officer for Environmentally Cool Things*. It's been a while since I last spoke to you in Community Connect. I have been beezy, beezy, beezy.



I've been buzzing about working with the beautiful staff at Council and the Ballina Byron Gateway Airport on cool environmental projects such improving our energy efficiency and reducing the amount of money Council spends on its electricity bills.

We've been up to loads of stuff and have made some major changes to the way we do things. Have a look...

Council is also looking for opportunities to reduce its energy usage and save money. We have already fitted solar panels to many community buildings including the Ballina Library, Kentwell Community Centre, Ballina Waste Centre, Alstonville Leisure and Entertainment Centre and the Lennox Head Cultural and Community Centre (totalling 80 kilowatts). These solar panels are using energy from the sun to make the electricity required to run the community buildings.

Streetlighting

Street lighting is a large and expensive part of Council's energy budget. During 2011/2012, much of the suburban street lighting was retrofitted with energy efficient fluorescent fittings. The impact this has had on energy reduction is fantastic. The consumption for the 2011 period was 1,825,141 kWh and in 2013 it was 1,329,149 kWh a reduction of approximately 27 percent. This also equated to a reduction of 539 tonnes of CO₂ emissions.

Lighting Council buildings

Electricity network costs and other charges have increased significantly in recent years, and now represent more than 60% of our total electricity bill.

We are progressively retrofitting lights throughout our Customer Service Centre and will report on this in future editions of Community Connect.

Solar Farm

Council is working on developing a 'solar farm' at the Ballina Wastewater Treatment Plant to help pay some of the electricity costs associated with running the plant. This would be a double win for the environment because the Wastewater Treatment Plant 'recycles' wastewater that can then be used in laundries, toilets and on the gardens of new homes that have the purple dual reticulation service, as well as businesses such as plant nurseries.

Did you know?

Annual energy usage in the Ballina Shire is approximately 340 gigawatt hours (340,000,000 kwh) annually. This equates to about 8,432 kWh per person.

So where is all this energy used? And who is paying for it? And are our solar panels making any difference at all?

We depend heavily on electricity. It is needed for lighting, heating and cooling, at home and at work. It is used for pumping our water too, and removing wastewater from our homes. It is used to run manufacturing, street-lighting, at the airport, traffic lights, charging our phones.... electricity is in high demand!

Electricity is expensive so it is in all our interests to manage how we use it, either by

directly reducing our own energy demands or by finding an alternative source of energy, such as the sun.

Ballina Shire residents have a very high take-up rate for solar panels. Of 16,369 households, 3,616 (22%) have solar panels on their roof, with a total of 8,604 kW capacity. Over an average year, this has the potential to generate 23,553,450 (8,604 x 10hrs average per day x 365 (days per year) x 0.75% of the time sunny) kWh of energy, or about 7% of our total energy needs.

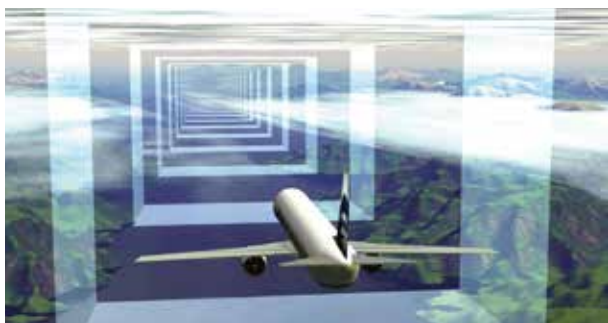
Four thousand homes across the Shire also have solar hot water.



As someone who loves flying I always get a buzz seeing the planes at the Ballina Byron Gateway Airport.

Neil and the staff at the airport have been working on a range of projects to reduce carbon emissions, save money, increase safety and improve services to travellers.

Smart Tracking



Smart Tracking allows commercial pilots approaching Ballina Byron Gateway Airport to use technology to ensure that flights closely follow the designated arrival flight path and land safely when visibility is down to 400 feet.

This not only saves significant amounts of fuel, but reduces the inconvenience to passengers if the plane is diverted to the Gold Coast because pilots cannot land at Ballina.

It is estimated that each diversion costs \$12,000 to \$15,000 so improving the ability to land during inclement weather is a big winner for airlines and passengers.

Smart Tracking is only being used by Jetstar at the moment, but can be used by other airlines, provided pilots have been trained and have the required equipment in their aircraft.

Smart Tracking also complements new indicator lights at the end of the runway that have been installed as part of the safety improvements program.

Electricity Use

All lighting in public areas of the airport has been replaced with LED lighting which use significantly less electricity. We will also be installing new lights in the carparks and under awnings which will be activated by a sensor, only turning on when it is dark or natural light is low.

Solar power panels, solar hot water and low water use toilets will be installed during the next terminal expansion phase to reduce electricity use.

Recycling bitumen from the runway

A new runway overlay was installed in November 2013 and the bitumen removed during this exercise was re-milled and used for access tracks along the airport perimeter fences, allowing us to undertake perimeter security and safety inspections. Approximately 400 tonnes of bitumen was recycled, saving space in landfill as well as the cost of new materials to resurface the access tracks.

New fire station to be built at Ballina Byron Gateway Airport

A new \$12 million fire station is to be built at the airport. Air Services Australia is responsible for the project with work expected to start before the end of the year.

The fire station will meet strict environmental standards including, a new stormwater treatment system that will reduce oils and other pollutants from leaving the site. The propellant used in fire fighting equipment will be substituted for one that is less harmful to the environment. (see article on page 20 for further information on this project)

Carbon neutral travel

Jetstar reports that 24% of its passengers flying to Ballina are offsetting the carbon generated by their flights. Jetstar utilises Climate Friendly™ to ensure carbon credits purchased are effectively distributed. Virgin Australia also provides the ability for passengers to offset the carbon generated by their flight through the Australian Government's National Carbon Offset Standard - Carbon Neutral scheme.

Watch this space....

New initiatives are always being evaluated by airport staff for their practicality, cost savings, environmental performance and usefulness. Projects in the pipelines include a new landing approach system which will have 32 lamps instead of the current 80 lamps. This project will have a five-year payback period. The lamps will be cheaper to purchase and there will be significant maintenance and electricity savings.

This project meets the following Environmental Action Plan and Community Strategic Plan aims:-

- CC1.3 Upgrade street lighting across the Shire
- HE3.2.2 Reduce impact of Council energy consumption on the environment
 - Reduce CO² emissions from Council's Built Assets
- EL2.1 Reduce energy consumption (dollar value) from Council's Built Assets

Do you have any ideas on how Council can save money and be more energy efficient? Don't be shy. Email the Green Bea, Council's Officer for Environmentally Cool Things greenbea@ballina.nsw.gov.au

If you are interested have a look at our Ballina Environmental Action Plan at ballina.nsw.gov.au/greenbea



CONSTRUCTION COMMENCES ON AVIATION FIRE STATION

Airservices Australia, which is a Federal Government owned organisation providing safe, secure, efficient and environmentally responsible services to the aviation industry, is in the process of fully funding and constructing a new \$12.5 million aviation rescue fire station at the Ballina Byron Gateway Airport.

The new fire station is being built following a sustained increase in passenger numbers. Once the threshold of 350,000 passengers per annum is reached it is mandatory for airports to have an airport fire service. Passenger numbers at the Ballina Byron Gateway Airport are above the regulatory trigger with over 400,000 passenger movements for the most recent 12 months.

The Ballina Byron Gateway Airport fire station is based on a modular, standardised design which includes two vehicle bays, a vehicle maintenance bay and workshop and administration areas. Onsite training facilities will include a classroom and a combined cold smoke, gas fire and ladder access training facility. At least five full time fire fighters will be permanently stationed at the airport. Construction is due to be completed by November 2014 followed by fit-out and commissioning with services due to commence in early 2015.

This significant infrastructure investment continues to reinforce the Ballina – Byron Gateway Airport as one of the leading airports in regional Australia, with the airport operations making a significant contribution to the economy of the Ballina Shire and the Northern Rivers Region.



CBD Parking Restrictions



It's great to see the Ballina, Alstonville and Lennox Head town centres buzzing with activity. These are busy areas and Council aims to ensure everyone has access to parking.

Parking restrictions apply to busy parts of the towns. Council Rangers and Parking Officers conduct regular patrols in these areas. Please check the timed parking restrictions where you are parking to ensure you are not issued with a penalty infringement notice.



Future Ballina

On 20 May 2014, Council held the Ballina Major Regional Centre Strategy Futures Forum at the Ballina RSL Club. Participants were asked to imagine how Ballina might look and feel as an appealing major regional centre over the next 20 years.

Key ideas raised included cultural activity, housing options, management of potential climate change impacts, transport links and improvements, food production opportunities, appreciation of the natural environment, utilisation of the river and employment opportunities.

The Futures Forum is Council's first step in the delivery of the Ballina Major Regional Centre Strategy over the next 18 months. With funding support from the NSW Department of Planning and Environment, Council will be exploring options, ideas and key issues associated with the emergence of Ballina as a major regional centre on the North Coast.

Council will shortly launch the project website with further information about the strategy. Interested members of the community can also find out more about the project by contacting Council's Strategic and Community Facilities Group on telephone 6686 1284.

THE BLACKWALL BUGLE IS GOING DIGITAL

From August 2014 The Blackwall Bugle will be available as an electronic download from the Ballina Shire Council website. You will be able to view the Bugle on your smartphone, iPad or personal computer; or print it at home if you like to read your Bugle on paper.

To make sure that you never miss an edition, visit the Blackwall Bugle webpage and subscribe to our email notification service.

To subscribe visit
ballina.nsw.gov.au/blackwallbugle





stop illegal waste dumping

The illegal dumping of household and garden waste as well as building and commercial rubbish is a continuing problem, polluting our waterways, neighbourhoods and bushland. So far this year there have been more than 180 reported cases of illegal dumping in the Ballina Shire.

Garden waste is also a huge problem, spreading weeds into the environment as well as creating a fire hazard. Council has to clean up and dispose of the illegally dumped waste and investigate each incident. This is time consuming and costly.

Penalty Infringement Notices (PINs) of up to \$1,500 for individuals and \$5,000 for corporations apply to those caught illegally dumping. Offences under the Protection of the Environment Operations Act can reach up to \$250,000 and possible jail time.

If you see someone dumping rubbish please record details, particularly a rego number, and report the incident to Council on 6686 1210 or go to illegaldumping.com.au/report/html or Council's website ballina.nsw.gov.au/illegaldumping.

This boat full of rubbish was recently dumped in Ballina. If you know any details please contact Council. Illegal dumping costs Council and the community more than \$100,000 a year to clean up.



SCHOOL DEBATING

Alstonville Public School and Alstonville High School are the winners of the Ballina Shire Council's 2014 "Debate the Change" competition which is designed to get students to take a fresh look at environmental issues.

Alstonville High School won the Year 7/8 division final against Southern Cross K-12 School, successfully arguing against the topic 'Individually, we don't make a difference to climate change'.

The Year 5/6 division was won by Alstonville Public School, whose team line was "It's the children's futures, of course they care". Despite some stiff opposition from Emmanuel Anglican College they convinced the adjudicators by arguing against the topic "Young people don't care about the environment".

This year's winners have the opportunity to address the elected Council on an environmental issue of their choice at the June Council meeting.

Thank you to Emmanuel Anglican College, Southern Cross K-12 School, Alstonville Public School, Empire Vale Public School and Alstonville High School for participating in this year's Debate the Change competition.

Public Art Work – Chickiba Lake Wastewater Pumping Station

Ballina can boast one of the best looking wastewater stations in NSW.

Students from Southern Cross K-12 School have transformed the wastewater pumping station by painting a stunning mural on the building. Art teacher Nadine Ebb and prominent local indigenous artist Digby Moran mentored and helped the students with the design which was inspired by the natural environment of Chickiba Lake.

The pump station which is located in East Ballina pumps wastewater up to the Lennox Head Wastewater Treatment Plant where it is treated, then either released into our waterways or will soon be recycled to new housing estates.

Thanks to members of the Rotary Club Ballina on Richmond, Ballina Shire Council's water section and field staff as well as Bunnings for the donation of the paint.



What's On! at your local community facility

Ballina Shire Council has five community facilities across the Shire available to hire for meetings, functions and events. If you are interested in starting a new interest group, sporting activity or community event phone our friendly staff on 6687 6291 or email communityfacilities@ballina.nsw.gov.au.



LENNOX HEAD CULTURAL & COMMUNITY CENTRE
1 Mackney Lane, Lennox Head



KENTWELL COMMUNITY CENTRE
20 Bangalow Road, Ballina



THE RICHMOND ROOM
Regatta Avenue, Ballina



BALLINA SURF CLUB FUNCTION ROOMS
65 Lighthouse Parade, Ballina



ALSTONVILLE LEISURE & ENTERTAINMENT CENTRE
42-46 Commercial Road, Alstonville

EVENT VENUES

- LHCCC:** Lennox Head Cultural & Community Centre
- KCC:** Kentwell Community Centre
- RR:** The Richmond Room
- Ballina SC:** Ballina Surf Club Function Rooms
- ALEC:** Alstonville Leisure & Entertainment Centre

COMMUNITY GROUPS

- Alstonville Book Club**
ALEC
1st Monday of the Month
10:30am – 12:00pm
Alstonville Library
6628 5527
- AMORC**
KCC
3rd Saturday of the Month
2:00pm – 4:00pm
Helen Luxor
6685 7736
amorc.org.au

- Ballina Camera Club**
KCC
2nd and 4th Thursdays of the Month
6:00pm – 9:00pm
Mark Davis
6686 6915
email mark@baaf.com.au

- Lennox Head Residents Association**
LHCCC
1st Monday of the Month
7:00pm – 9:00pm
Fred 6687 7790

- Sing Australia**
KCC
Every Tuesday Evening
7:00pm – 9:00pm
Brian 0407 358 717

The Silver Smiths

- KCC
Every Wednesday Evening
5:00pm – 6:00pm
Helen 6681 6357 or
Norma 6686 3506

COMMUNITY SERVICES

Broadband for Seniors

- KCC
Mondays and Thursdays
8:30am – 12:30pm
Phone 6687 6291

Interrelate Family Centres: Outreach Program

- KCC
Wednesdays and Fridays
9:00am – 5:00pm
Phone 6623 2750

Northern Rivers Gambling Counselling Service

- KCC
Thursdays
By Appointment
Phone 6687 2520

RSL Tibouchina Day Club

- ALEC
Wednesday
10:00am – 2:00pm
Graham 6628 7196

Ballina Lighthouse RSL Day Club

- RR
Thursdays
10:00am – 2:00pm
Fay 6686 3517
Lorraine 6687 4350

HEALTH & WELLBEING

Australian Red Cross Blood Service

- RR
Various Mondays and Tuesdays
Each Month
1:30pm – 7:00pm
Pre arrange an appointment.
Phone 13 14 95

Breast Cancer Support Group

- KCC
1st Thursday of the Month
10:00am – 11:30am
Robyn 0413 027 446

General Cancer Support Group

- Ballina SC
2nd Thursday of the Month
10:00am – 11:30am
Robyn 0413 027 446

Deirdre Middlehurst Clinical Psychologist

- LHCCC
Thursdays
8:00am – 5:00pm
Deirdre 0467 244 233



Ujali Yoga with Jess

- LHCCC
Tuesdays, Wednesdays & Thursdays
6:00pm – 7:30pm
Jess 0468 348 015

Rachel Reid's Dance Academy

- LHCCC
Wednesdays
4:30pm – 7:30pm
Rachel
0402 424 504

INTRA: The Buttery's Drug & Alcohol Outreach Program

- KCC
Wednesdays
1:30pm – 3:00pm
Phone 6687 2835

Physical Culture

- LHCCC
Every Thursday
5:15pm – 6:15pm
Sharyn 6687 4835
Margaret 6688 2126

Physical Culture

- ALEC
Tuesdays
3:30pm – 6:30pm
Jenna
0406 774 992



Bulk Billing Psychologist

LHCCC
Every Tuesday
8:00am – 5:00pm
Chris 0413 725 471

Veda Yoga for Surfers

LHCCC
Monday 6:00pm – 7:30pm
Daniel 0404 833 855

Paediatrician

LHCCC
Every Wednesday & Friday
8:00am – 6:00pm
Dr Uli Schmidt
02 5622 6020
email kilu11@gmx.de

SOL North Coast Nutrition

KCC
2nd and 4th Monday
8:00am – 6:00pm
Christina 6680 8576

Sacred Women's Circle

LHCCC
Monthly – full moon dates
7:30pm – 9:00pm
Dominica 0439 678 866

Iyengar Yoga with Liz

LHCCC
Tuesday 6:00pm – 7:30pm
Phone 0402 770 441

Purna Yoga with Tamika

Ballina SC
Tuesday 6:00pm – 7:00pm
Phone 0439 451 493

Feldenkrais Movement Class

LHCCC
Tuesdays
11:00am – 12noon
and 4:30pm–5:30pm
Lyn 6687 6815

Healthy Lifestyles by CHEGS

LHCCC
Wednesday 9:00am–10:00am
Bernadette
6687 8989

Alstonville Aikido

ALEC
Mondays and Wednesdays
7:30pm – 9:00pm
Jim 0404 281 003

Northern Rivers Occupational Therapy

LHCCC
Thursdays (fortnightly)
8:30am – 8:30pm
Roshan 6681 6995 or
0430 358 301

Counsellor/ Psychotherapist

LHCCC
Mondays
9:00am – 9:00pm
Judith 0404 386 399

SPORT, GAMES AND COMPETITIONS



Ballina Netball Association

ALEC
Mondays 7:00pm – 8:30pm
Wednesdays 5:30pm – 8:30pm
Thursdays 6:00pm – 9:00pm
Lauren or Taryn 6686 7191

Lennox Head Life Ball

LHCCC
Tuesdays
9:30am – 11:30am
Yvonne
6687 6238

Wheelchair Sports

LHCCC
Last Thursday of the Month
10:00am – 1:00pm
Phone 6620 6600

Alstonville Life Ball

ALEC
Mondays
10:00am – 12:00pm
Julie
0413 086 325

United Gymnastics Academy

ALEC
Mon, Wed and Thurs
4:00pm
Kindy Gym 9:30am
Tanya 6628 3533

KIDS & BABIES

Angelina Ballerina Dance Academy

LHCCC
Tuesdays
10am – 11am
Phone 6629 1014



Heart of Dance

LHCCC
Mondays
5:00pm – 8:00pm
Phone 0422 846 278

Lennox Head Playgroup

LHCCC
Tuesdays and Fridays
9:30am – 11:30am
Babies group Wednesdays
11:00am – 12:00pm
(during school terms only)
Tonya 6687 5745



Kidz Klub

LHCCC
July School holidays
9:30am – 4:00pm
Trudi 0429 770 147
See page 13 for details

IN THE LENNOX LIBRARY

Baby Bounce

Every Wednesday Morning
10:30am – 11:30am
Phone 6687 6398

Story Time

Every Thursday Morning
10:30am – 11:30am
Phone 6687 6398

For further information on the events listed above download the What's On! Program at ballina.nsw.gov.au/communityfacilities

market calendar

There is a market or two held every weekend in Ballina Shire. Discover original artworks, handicrafts, fashion, jewellery, second hand goods, as well as fresh local produce....or just sit, relax and enjoy fabulous food and the sights and sounds of your local market.

BALLINA MISSINGHAM FARMERS MARKET

Kingsford Smith Drive
Every Sunday
6am – 12noon
0416 048 241

ALSTONVILLE FARMERS MARKET

Bugden Lane Carpark
(behind Quattro Country)
Every Saturday
8am – 12noon
0478 163 038

ALSTONVILLE COMMUNITY MARKET

Alstonville Showground
2nd Sunday
8am – 12.30pm
6628 1568

BALLINA COMMUNITY MARKETS

Canal Road
3rd Sunday
7am – 1pm
6687 4328, 6686 4546

LENNOX COMMUNITY MARKETS

Williams Reserve
2nd & 5th Sunday
From 8am
lennoxmarket@gmail.com

NORTH COAST KIDS & BABIES MARKETS

Lennox Head Cultural & Community Centre, Cnr Mackney & Park Lanes
August 9th, October 18th, December 6th
9am – 1pm
0481 085 920



WOLLONGBAR ESTATE – LAND SALE



Wollongbar Estate could be the place to build your new home. Civil construction works on Stage 1 of Council's Wollongbar Estate have now commenced and are due to be completed in October 2014. This Estate is proving to be popular with six lots already pre-sold. Why not make enquiries today with your local real estate agent to see what may suit you. Favourable incentives are still available for eligible applicants. Details on lots and incentives available include:

- 7 lots available
- sized from 626m²
- priced from just \$190,000
- settlement October 2014 (approx)
- first home buyers' grants \$15,000 and free stamp duty to eligible applicants
- land buyers' subsidy \$25,000 to eligible low to middle income earners.

Not only is Council providing land at a competitive price for housing, but proceeds from land sales at Wollongbar Estate will go towards funding community infrastructure projects. Projects that have been partially or fully funded from Council's commercial and other land sales in the Ballina Shire include the Lennox Head Cultural & Community Centre, Ballina Surf Club, Wollongbar Sport Fields and the Coastal Shared Path.

General enquiries: Ballina Shire Council Commercial Services on telephone 6686 1200 or visit ballina.nsw.gov.au

Sales enquiries: Contact any local real estate agent.

Don't dispose of me yet

Use this issue of Community Connect to wrap kitchen waste and dispose in the green organics bin.



contacting your councillors

Councillors are here to represent your views. You can contact Councillors in person, by phone or email.

Mayor



David Wright
Mayor
phone 0415 965 403
davidwright@ballina.nsw.gov.au



Susan Meehan
phone 0431 685 666
smeehan@ballina.nsw.gov.au



Sharon Cadwallader
phone 0419 973 166
crsharonc@nor.com.au



Paul Worth
phone 0428 280 082
pworth@ballina.nsw.gov.au



Robyn Hordern
phone 0410 562 758
robynh@ballina.nsw.gov.au



Jeff Johnson
phone 0438 677 202
jeffjohnson@ballina.nsw.gov.au



Keith Johnson
phone 0407 435 573
kjohnson@ballina.nsw.gov.au



Ken Johnston
phone 0437 601 715
kenj@ballina.nsw.gov.au



Keith Williams
phone 0418 504 644
keithw@ballina.nsw.gov.au



Ben Smith
Deputy Mayor
phone 0415 482 412
bens@ballina.nsw.gov.au

COUNCIL CONTACT INFORMATION

Ph: 02 6686 4444
Fax: 02 6686 7035
Email: council@ballina.nsw.gov.au

Web: ballina.nsw.gov.au

Street Address:
40 Cherry Street, Ballina

Postal Address:
PO Box 450, Ballina 2478

Office Hours:
8.15am to 4.30pm Monday to Friday
(excluding public holidays)

After hours contact:
02 6626 6954

Council's Community Access Points:

Meeting agendas and documents on exhibition can be viewed at Council's Customer Service Centre; Alstonville, Ballina and Lennox Head Libraries and Council's website ballina.nsw.gov.au



Council publishes public notices weekly and Community Notices on the fourth Thursday of the month in the Ballina Shire Advocate.