

A 00-00 ROOM SCHEDULE		
NUMBER	NAME	AREA
G.000	ENTRY	Not Enclosed
G.001	FOYER	286.03 m²
G.002	SPORTS COURTS	1877.37 m²
G.003	RETRACTABLE SEATING STORAGE	62.45 m²
G.004	STORAGE	96.07 m²
G.006	KIOSK	17.18 m²
G.007	RECEPTION / BOX OFFICE	17.21 m²
G.008	STORAGE	6.85 m²
G.009	COMMS	6.84 m²
G.010	REFEREE CHANGE	12.88 m²
G.011	FIRST AID	7.29 m²
G.012	FEMALE TOILET	23.09 m²
G.013	CHANGE ROOM 1A	27.10 m²
G.014	CHANGE ROOM 1B	27.10 m²
G.016	PWD TOILET & SHOWER	7.80 m²
G.017	PWD TOILET & SHOWER	7.80 m²
G.018	CLEANERS	5.76 m²
G.019	CHANGE ROOM 2A	27.10 m²
G.020	CHANGE ROOM 2B	27.10 m²
G.021	MALE TOILET	23.01 m²
G.022	MEETING ROOM 2	42.93 m²
G.023	CONSULT ROOM 2	18.83 m²
G.024	EQUIPMENT STORAGE	42.98 m²
G.025	PASSAGE / LINK	113.62 m²
G.027	MEETING ROOM 1	27.53 m²
G.028	REFEREE CHANGE	15.54 m²
G.029	STORAGE	6.93 m²
G.030	STORAGE	9.86 m²
G.031	BIN ENCLOSURE	10.36 m²

COPYRIGHT
All rights reserved. This work is copyright and cannot be reproduced or copied in any form or by any means (graphic, electronic or mechanical, including photocopying) without the written permission of pdt architects. Any licence, express or implied, to use the document for any purpose whatsoever is restricted to the terms of the agreement or implied agreement with PDT Architects.

DIMENSIONS
Use figured dimensions only. DO NOT SCALE. Check all dimensions on site prior to fabrication or setout.

0 2 4 6 8 10 m

SCALE 1:200

tender issue

drawing authors

sheet setup date	
dwg authors	M. SEVILLA
project leader	O. THESSMAN

authorised for issue by project leader

signature _____ date _____

amendments	date	issue	description	checked by	auth	proj	ldr
10.11.17	1		DRAFT PRELIMINARY ISSUE	MS	OT		
15.11.17	2		REVISED DRAFT PRELIM ISSUE	MS	OT		
24.11.17	3		DA ISSUE	MS	OT		
11.12.17	4		DA ISSUE	MS	OT		
19.01.18	5		UPDATED DA ISSUE	MS	OT		
13.03.18	6		CHANGES TO CARPARK	MS	OT		
23.03.18	7		REVISED DA ISSUE	CH	OT		
06.04.18	8		PRELIM. TENDER ISSUE	CH	OT		
23.04.18	9		PRE-TENDER ISSUE	CH	OT		
22.06.18	10		TENDER ISSUE	CH	OT		



pdt.
architects

www.pdt.com.au
level 3, 100 mcclachlan street fortitude valley 4006 1+61 7 3232 1300
po box 607 fortitude valley qld 4006 quality assurance AS/NZS ISO 9001

project details

BALLINA INDOOR SPORTS CENTRE
40 CHERRY STREET BALLINA NSW

sheet title
SITE PLAN - SHEET 2

issue date	scale @ A1	stage
22.06.18	As indicated	SD
job no.	dwg no.	revision
8385	A 01-04	10

original sheet size A1 (594 x 841mm)

GENERAL NOTES

- ALL DRAWINGS ARE TO BE READ IN CONJUNCTION WITH THE GENERAL NOTES. **DWG. A 00-02**
- USE FIGURED DIMENSIONS ONLY. DO NOT SCALE FROM DRAWINGS. CHECK ALL DIMENSIONS ON SITE BEFORE SETOUT OR FABRICATION.
- THE CONTRACTOR MUST VERIFY AND CHECK ALL SITE CONDITIONS INCLUDING CEILING HEIGHTS AND DIMENSIONS BEFORE COMMENCING WORK ON SITE.

ABBREVIATIONS

HWN	HIGH LEVEL WINDOW
LV	GLASS LOUVRES
LVISC	SAFETY LOUVRES WITH POWDERCOATED SECURITY SCREEN
RD	POWDERCOATED ROLLER DOOR
RS	POWDERCOATED ROLLER SHUTTER
RWT	RAINWATER TANK - CONNECT ROOF WATER DRAINAGE TO RWT, REFER TO HYDRAULIC ENGINEER
WN	WINDOW

COPYRIGHT

All rights reserved. This work is copyright and cannot be reproduced or copied in any form or by any means (graphic, electronic or mechanical, including photocopying) without the written permission of pdt architects. Any licence, express or implied, to use the document for any purpose whatsoever is restricted to the terms of the agreement or implied agreement with PDT Architects.

DIMENSIONS

Use figured dimensions only. DO NOT SCALE. Check all dimensions on site prior to fabrication or setout.

0 1 2 3 4 5 m

SCALE 1:100

tender issue

drawing authors

sheet setup date	
dwg authors	M. SEVILLA
project leader	O. THESSMAN

authorised for issue by project leader

signature _____ date _____

amendments

date	issue	description	checked by	auth	prj	ldr
10.11.17	1	DRAFT PRELIMINARY ISSUE	MS	OT		
15.11.17	2	REVISED DRAFT PRELIM ISSUE	MS	OT		
24.11.17	3	DA ISSUE	MS	OT		
11.12.17	4	DA ISSUE	MS	OT		
19.01.18	5	UPDATED DA ISSUE	MS	OT		
23.03.18	6	REVISED DA ISSUE	CH	OT		
06.04.18	7	PRELIM. TENDER ISSUE	CH	OT		
23.04.18	8	PRE-TENDER ISSUE	CH	OT		
22.06.18	9	TENDER ISSUE	CH	OT		

COURT MARKING NOTES

- ALL BASKETBALL LINE MARKINGS, CLEARANCES AND EQUIPMENT TO COMPLY WITH THE INTERNAL BASKETBALL FEDERATION (FIBA) STANDARDS, RULES AND REGULATIONS.
- ALL NETBALL LINE MARKINGS, OVERRUN CLEARANCES AND EQUIPMENT TO COMPLY WITH THE INTERNATIONAL NETBALL FEDERATION (INF) STANDARDS, RULES AND REGULATIONS.

GENERAL NOTES

- ALL DRAWINGS ARE TO BE READ IN CONJUNCTION WITH THE GENERAL NOTES, **DWG. A 00-02**
- USE FIGURED DIMENSIONS ONLY. DO NOT SCALE FROM DRAWINGS. CHECK ALL DIMENSIONS ON SITE BEFORE SETOUT OR FABRICATION.
- THE CONTRACTOR MUST VERIFY AND CHECK ALL SITE CONDITIONS INCLUDING CEILING HEIGHTS AND DIMENSIONS BEFORE COMMENCING WORK ON SITE.

OCCUPANCY

- AMENITIES
- FOYER / CIRCULATION
- KIOSK / OFFICE
- SPORTING FACILITY
- Calculating...



pdt.
architects

www.pdt.com.au
level 3, 100 mcclachlan street fortitude valley 4006 1 +61 7 3232 1300
po box 607 fortitude valley qld 4006 quality assurance AS/NZS ISO 9001

project details

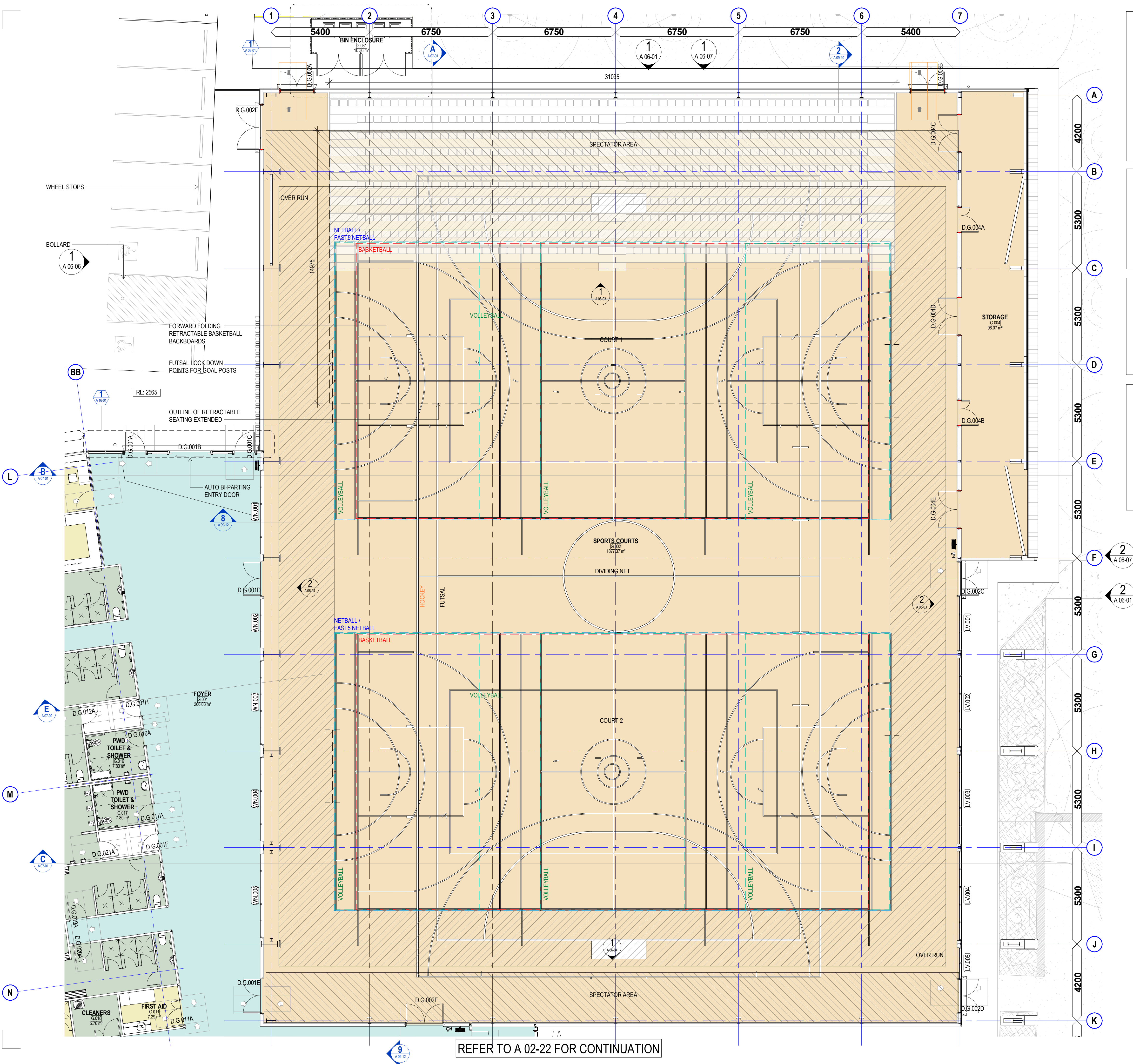
BALLINA INDOOR SPORTS CENTRE
40 CHERRY STREET BALLINA NSW

sheet title

GENERAL ARRANGEMENT PLAN (PART A)

issue date	scale @ A1	stage
22.06.18	1 : 100	SD
job no.	dwg no.	revision
8385	A 02-21	9

original sheet size A1 (594 x 841mm)



REFER TO A 02-22 FOR CONTINUATION

COPYRIGHT
All rights reserved. This work is copyright and cannot be reproduced or copied in any form or by any means (graphic, electronic or mechanical, including photocopying) without the written permission of pdt architects. Any licence, express or implied, to use the document for any purpose whatsoever is restricted to the terms of the agreement or implied agreement with PDT Architects.

DIMENSIONS
Use figured dimensions only. DO NOT SCALE. Check all dimensions on site prior to fabrication or setout.

0 1 2 3 4 5 m

SCALE 1:100

tender issue

drawing authors

sheet setup date

dwg authors

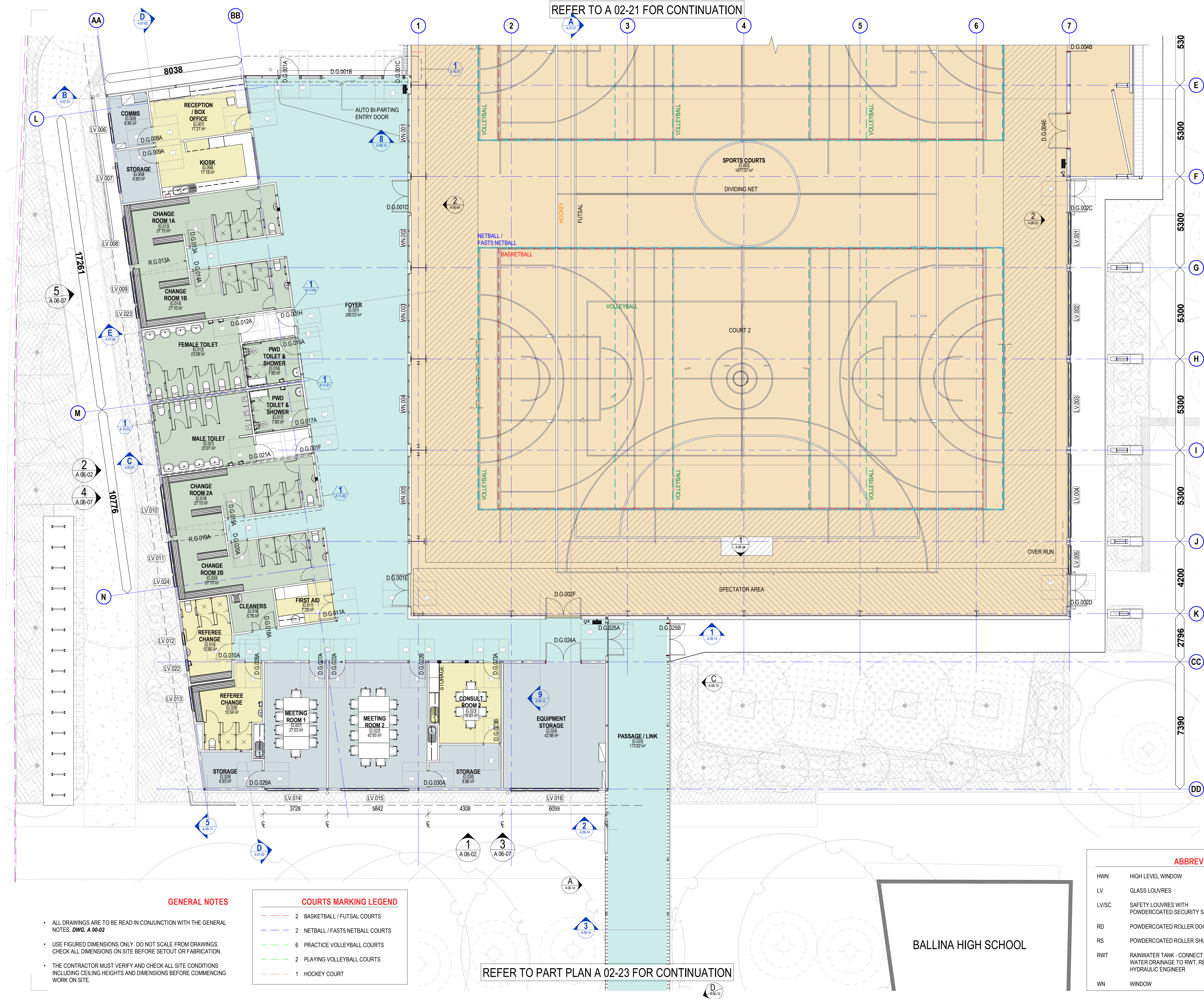
project leader

authorised for issue by project leader

signature

date

amendments	date	issue	description	checked by	auth	proj	ldr
10.11.17	1		DRAFT PRELIMINARY ISSUE	MS	OT		
15.11.17	2		REVISED DRAFT PRELIM ISSUE	MS	OT		
24.11.17	3		DA ISSUE	MS	OT		
11.12.17	4		DA ISSUE	MS	OT		
19.01.18	5		UPDATED DA ISSUE	MS	OT		
23.03.18	6		REVISED DA ISSUE	CH	OT		
06.04.18	7		REVISED AMENITIES	CH	OT		
06.04.18	8		PRELIM. TENDER ISSUE	CH	OT		
23.04.18	9		PRE-TENDER ISSUE	CH	OT		
12.06.18	10		REVISED REF' CHANGE AND KIOSK / OFFICE	CH	OT		
22.06.18	11		TENDER ISSUE	CH	OT		



ballina shire council

pdt.
architects

www.pdt.com.au
level 3, 100 mcclachlan street fortitude valley 4006 1 +61 7 3232 1300
po box 607 fortitude valley qld 4006 quality assurance AS/NZS ISO 9001

project details

BALLINA INDOOR SPORTS CENTRE
40 CHERRY STREET BALLINA NSW

sheet title

GENERAL ARRANGEMENT PLAN (PART B)

issue date

22.06.18

scale @ A1

1:100

stage

SD

job no.

8385

dwg no.

A 02-22

revision

11

original sheet size A1 (594 x 841mm)