

communityconnect

the magazine of ballina shire council

inside

Local Lifeguards



Plan Ballina Shire's Future



Recycled Water



NRCG Exhibitions



Australia Day special guest **Alisa Camplin**

Australia's first female Winter Olympic Gold Medallist, Alisa Camplin, will be our guest speaker at the official Ballina Shire Australia Day ceremony on 26 January 2017.

"I can't think of a better place to spend celebrating Australia Day, and I am truly looking forward to sharing my story with (and hopefully inspiring) the wonderful people of the Ballina Shire," Alisa said.

Alisa didn't learn to ski until she was 19 years of age and broke nearly every bone in her body as she climbed through the ranks, brought home back-to-back Olympic medals and dominated the sport of Freestyle Aerial Skiing.

As well as competing, Alisa built a global career with corporate giant IBM, leading \$200M+ businesses as a senior executive working across brand strategy, sales, business development and service delivery.

Proving that success is a choice, Alisa then turned heart-wrenching personal adversity into an opportunity to improve the lives of others, raising more than \$1M through her charity Finnan's Gift.

Alisa will be delivering a special address at our Australia Day Ceremony not to be missed. The athlete is known for her rare story telling ability that inspires, entertains and transfers knowledge.

Alisa is fresh, honest and deliberate in her pursuits, combining business fundamentals with an authentic resilient attitude in order to succeed.

The event will start at 9am at the Lennox Community Centre with a full program including a Welcome to Country, citizenship ceremony and music performance. All members of the community are invited to attend.

Council will be providing a free bus, departing from various locations throughout the Ballina Shire. Bookings are essential by contacting the Ballina Visitor Information Centre on free call 1800 777 666 (refer to bus timetable on page 20).

To find out more about what's happening this Australia Day see page 20 or visit discoverballina.com or ballina.nsw.gov.au

Arrangements were made through Celebrity Speakers celebrityspeakers.com.au

MERRY Christmas & HAPPY NEW YEAR

There's loads of Christmas spirit with the town centres of Alstonville, Ballina, Lennox Head and Wardell adorned with decorations, flags and lighting.

Ballina Shire Councillors and staff wish our residents and visitors a safe and happy Christmas and a prosperous New Year.



our *vision*

serving the
community
of today while
preparing for the
challenges of
tomorrow

contents

engaged leadership

From the Mayor's Desk	3
Road and footpath project update	4
Help us plan for Ballina Shire's future	5 – 6
Top ten tips for surf safety	7
Patrolled beaches	7
Your local lifeguards	7
Land buyers' subsidy a success	8
Looking for a Justice of the Peace	8
Register for eRates	8
First shark nets off Ballina	9

healthy environment

Holiday parking	10
Buying a 4WD permit	10
Lake Ainsworth is a dog free zone	10
Off-leash dog exercise areas	11
Pooches in public places to be on a lead	11
Random dog checks	11
Waste Watch – Issue 15	12 – 13
Backyard burning permits	14
Food safety during a power failure	14
Urban Stormwater Team	14
On-site sewage management roles & responsibilities of government	15
A coffee over Christmas?	15
Water Talk – Issue 35	16 – 18
Protecting your public health – Mosquitoes	19

connected community

Ballina Shire Australia Day celebrations	20
Are you organising a special event this festive season?	21
BreastScreen NSW mobile unit returns to Ballina	21
Calling all animal welfare volunteers	21
New Seniors Card Directory 2017	21
Buy local and invest in the place we call home	21
Community Events – What's On?	22
What to do during the school holidays	23
Market Calendar	23
Arts Connect – Northern Rivers Community Gallery	24 – 25
CBD Roundabout Public Art Project	26
12 Days of a road-safe Christmas	26
Play it safe this festive season	27
Road safety Bingo card	27
Christmas hampers	27
Community Spaces	28
Engineering Awards	29
2016 Local Government Environment Awards	29
Novaskill Awards	29

prosperous economy

Ballina Byron Gateway Airport	30
Council releases online Interactive Mapping	30
Around the Business Chambers	31
Council services over Christmas/New Year period 2016/2017	32



from the mayor's desk

"After a recent shire tour with staff and councillors it is apparent that our shire really is a magnificent place to live in. I don't know of many areas where the population and visitors can share such a magnificent scenario of beautiful beaches, rainforests, primary production, river, heath lands and waterfalls on an ever improving road network."

I'm proud of Council's continued development and improvements to our infrastructure with four wastewater plants of the highest quality, community buildings that offer a variety of styles and uses, industrial land providing essential jobs, a growing airport, and vibrant shopping experiences in spaces where the customers benefit from great service and incredible local products.

Over the break, please take a walk along the new section of the Coastal Recreational Path. When completed with the interpretive signage early in the New Year, the experience will be world class. This project has been a long time coming and I thank all those involved over the years to make this happen.

In 2017, Council will build two new state-of-the-art pools at Ballina and Alstonville. There will also be a six lane, 25 metre lap/learn-to-swim pool at each venue. Ballina will also get a new amenities building and transparent fencing along the Richmond River.

A new departure lounge will be built at the airport and nearby industrial land will be filled to allow more development. Planning for the Airport Boulevard as a new entrance to the airport will also be undertaken.

The masterplan for the south-eastern precinct of Lake Ainsworth will be completed and will give residents and visitors a magnificent open space with great facilities.

I have been fortunate to visit many incredible groups over the last twelve months and on behalf of the whole community, I thank those organisations for what they do to help others in our community.

Recently, I was fortunate to be invited to a group of small businesses who are building a network of support to help each other.

In their words: "The Ballina Business Alliance is a group of dynamic local leading business men and women who meet on a weekly basis to network, share referrals, support each other and help grow one another's businesses."

The group meets weekly at the Ballina Surf Club and the enthusiasm on display was evident.

I really hope that businesses and families have a great holiday break and that safety in the water and on the roads is paramount.

Please enjoy family time over the holiday period and take a pause to appreciate all the hard-working volunteers who give up their time to make Ballina Shire such a great place to live.

See what you can do to make someone's Christmas a little better. Whether it's a few words of greeting, an offer to help, an inclusion to join a meal or a small gift – your generosity might be the exact thing that helps someone experience a time of joy and fellowship.

Cr David Wright

our *values*

creative

accessible

respectful

energetic

safe

road and footpath project update

RECENTLY COMPLETED	CURRENT PROJECTS	FUTURE PROJECTS – EARLY 2017 CALENDAR
Fenwick Drive, East Ballina Road reconstruction has been completed between Nimbin Place and Sharpe Street including pavement sealing, for an approximate cost of \$150,000.	Skinner Street, Ballina Road reconstruction has commenced between North Creek and Martin Street which will also include drainage improvement and kerb realignment. Budget is approximately \$150,000 but is being reassessed due to additional works.	Grant Street, Ballina Reconstruction of part of Grant Street between River Street and Tamar Streets, which will also include drainage replacement. Road closures will be in place for this work.
Hickey Place, Ballina Road reconstruction of a small cul-de-sac which also included resurfacing with asphalt due to tight turning has been completed. Approximate cost \$150,000.	Missingham car park, Kingsford Smith Drive, Ballina The finalisation of the car parking area and the associated landscaping is in progress with completion before Christmas. This will provide for an improved amenity at this popular riverside location. Budget \$150,000.	Teven Road, Teven Road reconstruction for a section of Teven Road approximately 700m south of the Tintenbar Road intersection. This will connect to previous works. Budget \$210,000.
Skennars Head Road, Skennars Head Road reconstruction has been completed between west of Henderson Drive to North Creek Road. This reconstruction is adjacent to the newly formed shared path facility and completes upgrading along this stretch of road. Approximate cost \$280,000.	Coastal Recreational Path, East Ballina The contractor has now commenced work on the modified route section east of Flat Rock Tent Park, and the Council team is currently working on the Angels Beach section. The Angels Beach section will include a small car park at the current entry location. The path construction is due for completion in December 2016, and Aboriginal Cultural Ways installations are due for completion in January 2017. The overall budget for the Angels Beach to Sharpes Beach path, boardwalk and Aboriginal Cultural Ways project is \$2M.	Skennars Head Road and The Coast Road roundabout, Skennars Head This project is scheduled to commence early 2017 (subject to receiving final approvals) and will reconfigure the current T intersection to a roundabout. Early works will be undertaken west of The Coast Road to provide filling for the new roundabout which will also be raised to reduce the dip at the intersection. The project is funded by the RMS Safer Roads Program with an approximate value of \$2M.
	Friday Hut Road, Brooklet Road reconstruction including drainage improvements and road sealing is underway for an approximate length of 600m of Friday Hut Road, north of the Fernleigh Rd / Brooklet Rd intersection. Budget \$390,000	
	The Wardell boardwalk is set to resume in late January 2017 when the contractor returns after a December/January break. Council teams will then follow up with the concrete footpath connection through to Cedar Street after the contractor works are complete. This will see the completion of the project into April 2017.	

our community our future

WIN
an Apple
iPad!

HELP US PLAN FOR BALLINA SHIRE'S FUTURE!

The newly elected Council is now reviewing our Community Strategic Plan (CSP).

This is a 10-year plan prepared by Council on behalf of the community.

You can download the current plan at www.ballina.nsw.gov.au

The CSP provides a broad overview of where we wish to head as a community, along with identifying the items that are important to us. It does not provide specific detail on the works program as to how we get there. This information is contained in the Delivery Program, which is also available on our website.

If you are interested in assisting us in preparing this new CSP please complete the following survey or online at www.ballina.nsw.gov.au and go into the draw to win an Apple iPad.

ABOUT YOU *(please tick)*

- ☐ Male
☐ Female

- ☐ Under 18
☐ 18-34
☐ 35-49
☐ 50-64
☐ 65+

I live in:

- ☐ East Ballina
☐ West Ballina
☐ Ballina Island
☐ Ballina Heights
☐ Alstonville
☐ Lennox Head
☐ Skennars Head
☐ Wardell
☐ Wollongbar
☐ Other

OUR COMMUNITY'S VISION

Think about the community you want to live in....what five words best describes this.

1.
2.
3.
4.
5.

The current Community Strategic Plan identifies four interrelated directions, a range of outcomes, and what Council will do to achieve these outcomes.

The directions we have chosen are based on the principles of Quadruple Bottom Line (QBL), which is part of the framework from the Office of Local Government.

The four directions we have chosen are:

- **CONNECTED COMMUNITY (SOCIAL)**
- **PROSPEROUS ECONOMY (ECONOMIC)**
- **HEALTHY ENVIRONMENT (ENVIRONMENT)**
- **ENGAGED LEADERSHIP (CIVIC LEADERSHIP)**

SATISFACTION WITH OUTCOMES

Listed are broad community outcomes. An outcome is a statement of what Council will strive to achieve over the next ten years.

Please rate your satisfaction levels with Council's proposed outcomes by numbering the boxes 1 to 5:

- 1 not at all satisfied
2 not very satisfied
3 somewhat satisfied
4 satisfied
5 very satisfied

DIRECTION 1: A CONNECTED COMMUNITY

- ☐ We feel safe
☐ We feel connected to the community
☐ There are services and facilities that suit our needs

DIRECTION 2: PROSPEROUS ECONOMY

- ☐ We attract new business and visitors
☐ My business can grow and diversify
☐ Improve liveability in the Ballina Shire

DIRECTION 3: HEALTHY ENVIRONMENT

- ☐ We understand the environment
☐ We use our resources wisely
☐ Our built environment blends with the natural and cultural environment

DIRECTION 4: ENGAGED LEADERSHIP

- ☐ Our Council works with the community
☐ Council's finances and assets are well managed
☐ We are all valued citizens

Are there any other outcomes you would like to see Council achieve?

P.T.O.

.....
.....
.....

SURVEY CLOSING: MONDAY 30 JANUARY 2017

Survey continued...

SATISFACTION WITH ACTIONS

Once we have identified the outcomes we are seeking, we then move to action. Below is a list of broad community actions. These actions detail how Council will go about achieving the outcome.

Please rate your satisfaction levels with Council's proposed actions by numbering the boxes 1 to 5:

- 1 not at all satisfied
- 2 not very satisfied
- 3 somewhat satisfied
- 4 satisfied
- 5 very satisfied

Direction 1: A Connected Community

OUTCOME: WE FEEL SAFE

Actions

- ☐ Actively promote safety and well-being strategies
- ☐ Ensure adequate plans are in place for natural disasters and environmental changes
- ☐ Monitor the built infrastructure and the services delivered to the community to ensure relevant standards are being met

OUTCOME: WE FEEL CONNECTED TO THE COMMUNITY

Actions

- ☐ Encourage community interaction and volunteering
- ☐ Create events, strategies and activities that promote interaction and education, as well as a sense of place
- ☐ Assist disadvantaged groups within our community

OUTCOME: THERE ARE SERVICES AND FACILITIES THAT SUIT OUR NEEDS

Actions

- ☐ Provide equitable access to a range of community services and facilities
- ☐ Provide young people with a range of leisure activities along with opportunities for personal development
- ☐ Provide strategies for older residents to be part of our community

Direction 2: A Prosperous Economy

WE ATTRACT NEW BUSINESS AND VISITORS

Actions

- ☐ Promote our area as an attractive place to invest and visit
- ☐ Provide opportunities for new business
- ☐ Encourage diversification and enhance the image of the local economy

MY BUSINESS CAN GROW AND DIVERSIFY

Actions

- ☐ Enhance transport and other business networks
- ☐ Facilitate a range of Council business activities to support economic development
- ☐ Provide efficient and cost effective regulatory environment for doing business

IMPROVE LIVEABILITY IN THE BALLINA SHIRE

Actions

- ☐ Support residential development that delivers services close to home
- ☐ Facilitate and provide affordable infrastructure
- ☐ Improve connectivity in the shire

Direction 3: A Healthy Environment

WE UNDERSTAND THE ENVIRONMENT

Actions

- ☐ Our planning considers past and predicted changes to the environment
- ☐ Undertake and promote initiatives that improve our waterways
- ☐ Enhance our open spaces, reserves and natural areas and their heritage values

WE USE OUR RESOURCES WISELY

Actions

- ☐ Implement total water cycle management practices
- ☐ Reduce, reuse and recycle our resources
- ☐ Pursue innovative technologies

OUR BUILT ENVIRONMENT BLENDS WITH THE NATURAL AND CULTURAL ENVIRONMENT

Actions

- ☐ Develop and implement plans that balance the built environment with the natural environment
- ☐ Minimise negative impacts on the natural environment
- ☐ Match infrastructure with development

Direction 4: Engaged Leadership

OUR COUNCIL WORKS WITH THE COMMUNITY

Actions

- ☐ Facilitate and develop strong relationships and partnerships with the community
- ☐ Involve our community in the planning and decision making processes of Council
- ☐ Actively advocate community issues to other levels of government

COUNCIL'S FINANCES AND ASSETS ARE WELL MANAGED

Actions

- ☐ Proactively pursue revenue opportunities, cost savings and efficiencies
- ☐ Utilise modern operating systems and apply contemporary practices
- ☐ Provide effective risk and safety practices

WE ARE ALL VALUED CITIZENS

Actions

- ☐ Provide prompt, knowledgeable, friendly and helpful advice
- ☐ Deliver responsive and efficient services
- ☐ Encourage a motivated and adaptive workforce

Do you have any other comments to make?

.....

.....

.....

.....

.....

WOULD YOU LIKE TO KNOW MORE ABOUT OUR COMMUNITY STRATEGIC PLAN? (please tick)

☐ Yes ☐ No

If you have answered yes to the above, or would like to go into the draw to **WIN AN APPLE IPAD** please provide your contact details:

Name:

Daytime Phone:

Email:

NOTE: Council will only use your personal details to get in contact for the purposes identified above.

Post to: Ballina Shire Council, Reply Paid 450, Ballina NSW 2478

Online: www.ballina.nsw.gov.au

Survey closes: Monday 30 January 2017
Winner will be announced Friday 3 February 2017.

Terms and Conditions apply. Entry is open to all residents, regardless of age. Authorised under NSW Permit No LTPS/16/09931. Full terms and conditions available at www.ballina.nsw.gov.au





stay safe
at the
beach this
summer

TOP TEN TIPS FOR SURF SAFETY

- 1 Never swim or surf alone.
Children should always be supervised
- 2 Always swim or surf at places patrolled by lifesavers or lifeguards
- 3 Swim between the red and yellow flags
- 4 Never swim under the influence of alcohol or drugs
- 5 If you get into trouble in the water, stay calm, signal for help, float and wait for assistance
- 6 If you are unsure of surf conditions, ask a lifeguard or lifesaver
- 7 Read and obey the signs on the beach, e.g. "no diving", "no fishing", "no surf craft"
- 8 Never swim at night
- 9 Never run and dive into the water, even if you have checked before, water conditions can change
- 10 Never swim directly after a meal.

your local lifeguards



If you are on the beach in the Ballina Shire this summer look out for Ruben Roxburgh and Hayden Thomas. They are two of the region's most experienced lifeguards and they join a number of other professional lifeguards who are patrolling our beaches in 2016/17.

Hayden and Ruben grew up on the far north coast. Hayden has been a familiar face at local surf clubs for more than 10 years, starting out as a nipper at Shelly Beach.

"Joining Nippers is the best way for kids to understand and respect the ocean," Hayden said.

"Nippers is a great training ground because it gives kids the skills and confidence to graduate to patrolling as a volunteer surf lifesaver," he said.

"I am passionate about surf lifesaving and I have taken it one step further, making the transition to a professional lifeguard," Hayden said.

Hayden was named Byron Bay's 2016 Lifeguard of the Year and he has been involved in many rescues on far north coast beaches.

Like Hayden, Ruben Roxburgh has also received bravery commendations for rescues on local beaches.

Ruben has a long surfing pedigree, joining the Professional Longboard Circuit at the young age of 16.

While still a keen surfer he has been fortunate to make a career out of professional lifeguarding.

"There's nothing better than watching people enjoy themselves at the beach," Ruben said.

"My message to everyone is to swim between the flags," he said.

"If you are not between the flags and further up the beach we can't see you, and if we can't see you we can't save you if you get into trouble," Ruben said.

engaged leadership

patrolled beaches



Surf lifesavers are trained volunteers who patrol our beaches on weekends and public holidays during the summer season.

In Ballina Shire volunteer lifesavers are members of the Ballina Lighthouse and Lismore Surf Lifesaving Club or the Lennox Head Alstonville Surf Lifesaving Club. In comparison, professional lifeguards are employed by NSW Australian Lifeguard Service and provide beach safety services to Ballina Shire Council.

BEACH	PATROLS START	PATROLS FINISH	DETAILS
Lennox Head Beach	26/09/2016	24/04/2017	9am – 5pm Professional Lifeguards Mon-Fri Volunteers on weekends and public holidays
Sharpes Beach	19/12/2016	29/01/2017	9am – 5pm Professional Lifeguards 7 days a week
Shelly Beach	19/12/2016	29/01/2017	9am – 5pm Professional Lifeguards 7 days a week
Lighthouse Beach	19/12/2016	27/01/2017	9am – 5pm Professional Lifeguards Mon-Fri Volunteers on weekends and public holidays



land buyers' subsidy a success....

Council received Federal Government Funding under the Building Better Regional Cities Program for Wollongbar Sports Fields and Ballina Heights Drive.

As part of the Funding Agreement Council was able to provide 96 land buyer subsidies within the Wollongbar Urban Expansion Area and 120 subsidies in the Ballina Heights Estate to low to moderate income earners.

The land buyers subsidy scheme for Wollongbar is now complete, yet there are still 34 grants available for Ballina Heights.

The scheme has been very successful in stimulating the local housing construction market and providing assistance for low to moderate income earners in purchasing land for housing.

General enquiries: Ballina Shire Council Commercial Services on telephone 6686 1239 or visit www.ballina.nsw.gov.au

Sales enquiries: Contact any local real estate agent.



Looking for a Justice of the Peace?



Did you know that Ballina and Lennox Head libraries offer a Justice of the Peace service? This is a free service offered to the whole community. To avoid waiting, book an appointment in advance.

BALLINA LIBRARY

6 River St, Ballina

02 6686 2831

JP on-site: Monday's and Friday's between 9am and 5pm.
Saturday's between 9am and 12noon.

LENNOX HEAD LIBRARY

Lennox Head Community Centre,
Cnr Park Lane & Mackney Lane,
Lennox Head

02 6687 6398

JP on-site: Wednesdays and Thursdays between 9am and 5pm.

Register for
eR@tes

Make the environmentally friendly choice today and put your rate payer money to better use. Receive your rates notice electronically by using eRates.

TO REGISTER

Visit Ballina Shire Council's website
www.ballina.nsw.gov.au

Click on eRates and follow the prompts.
Your next rates notice will be delivered direct to your inbox.



www.ballina.nsw.gov.au



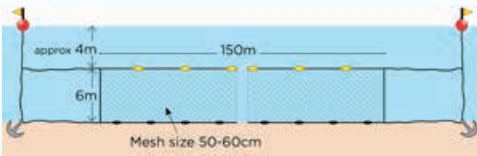
FIRST SHARK NETS OFF BALLINA

After extensive consultation with the local community, shark nets are being trialled at Lighthouse Beach, Shelly Beach and Sharpes Beach at Ballina, Seven Mile Beach at Lennox Head and Evans Head Beach.

The trial nets are similar to those used in the Newcastle to Wollongong shark meshing area, where there has been only one fatality at a netted beach in more than 70 years. The nets are 150 metres long, 6m deep and usually set in water 10-12m deep.

Nets are fitted with the most sophisticated dolphin pingers and whale alarms available to deter marine mammals away from the nets.

The mesh nets will be checked twice a day by a contractor, weather and sea conditions permitting, or following reports of caught marine life.



The community was consulted as part of the decision-making process regarding locations for the six month net trial.

The beaches selected received strong support during recent phone and online surveys, which showed 54 per cent of 600 Ballina and Evans Head residents surveyed felt the trial would have a positive impact on the community (12 per cent were against).

These nets will complement the Government's \$16 million shark strategy, which is leading the world in testing new technologies, including drones, listening stations and sonar technology, to better protect swimmers and surfers. These trials are currently underway.

Drones with a camera attached are being trialled for shark surveillance using locally-based operators in Evans Head, Lennox Head, Lighthouse Beach (Ballina), Redhead and Kiama. Results have so far been promising and led to the evacuation of some beaches following the identification of dangerous sharks close to swimmers and surfers.

Ongoing helicopter surveillance is providing more patrols along the NSW coastline. This 'eye in the sky' is able to detect sharks in the water and alert surfers and swimmers. School holidays and weekends are the focus period.



The number of SMART drumlines available in NSW is increasing from 15 to 100. SMART drumlines are linked to a satellite and use a special trigger mechanism to alert DPI scientists via phone and email when an animal is hooked. The scientists then respond to tag and release the shark.



More than 60 white sharks and 80 bull sharks have been tagged by NSW DPI. The tags transmit valuable positional information to satellites and recently installed VR4G listening

stations when the tagged shark is nearby. Many of these tagged white sharks have made their way south, some as far as Flinders Island in South Australia. One even made its way to New Zealand.



VR4G listening stations have been set about 300 metres off-shore along the NSW coast. These listening stations detect nearby sharks fitted with acoustic tags and transmit the information in near real-time to be broadcast automatically via the DPI Twitter account @NSWSHarkSmart and also on the SharkSmart app.



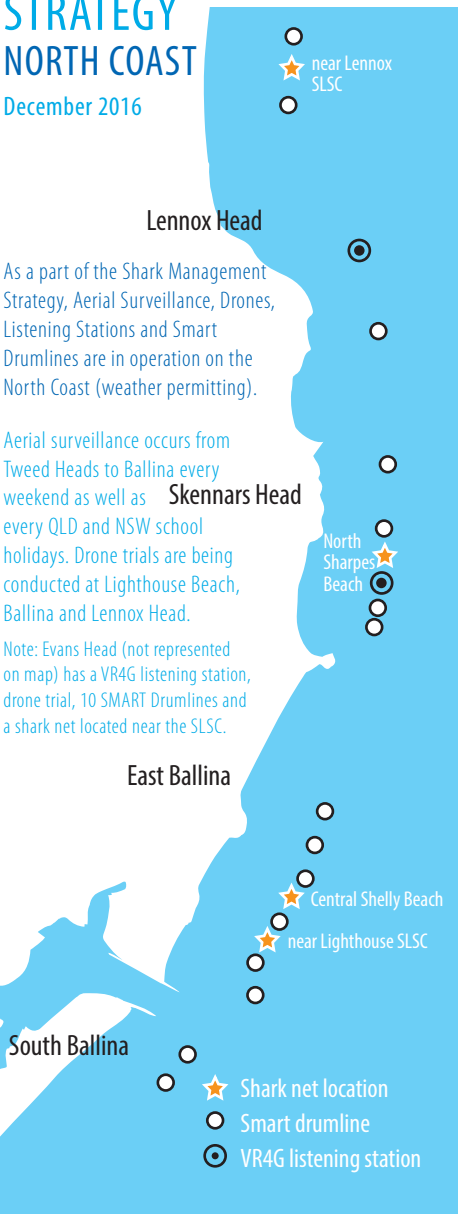
Department of Primary Industries



Department of Primary Industries

SHARK MANAGEMENT STRATEGY NORTH COAST

December 2016



www.dpi.nsw.gov.au



engaged leadership

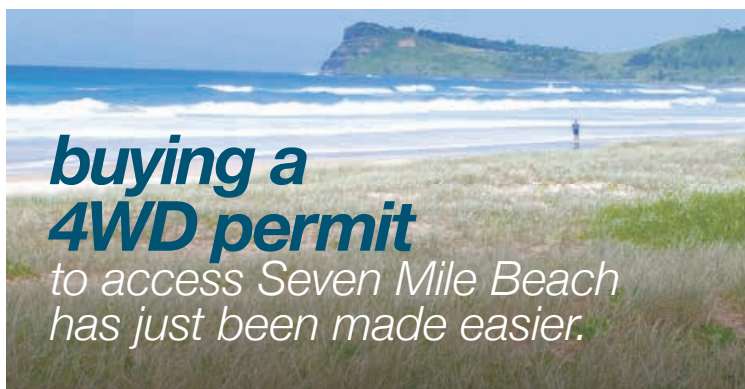


HOLIDAY PARKING

The Christmas holidays are looming and that means parking is in great demand in our town centres. To ensure people have access to parking, restrictions are in place in these areas.

Please check timed parking restrictions to avoid receiving a Penalty Infringement Notice (PIN). Council Rangers and Parking Officers conduct regular patrols in these areas, including weekends.

Fines of \$108 will be issued for overstaying the sign posted time limit and there is a \$541 penalty plus 1 demerit point for parking in a disabled parking space without a current permit.



An automated kiosk is situated opposite the Surf Club approaching Camp Drewe Road.

1 day permit	\$12.00
30 day permit	\$36.00
6 month permit	\$54.00
Annual permit	\$90.00

Payment by Card Only.

For more information visit ballina.nsw.gov.au or telephone 6686 4444

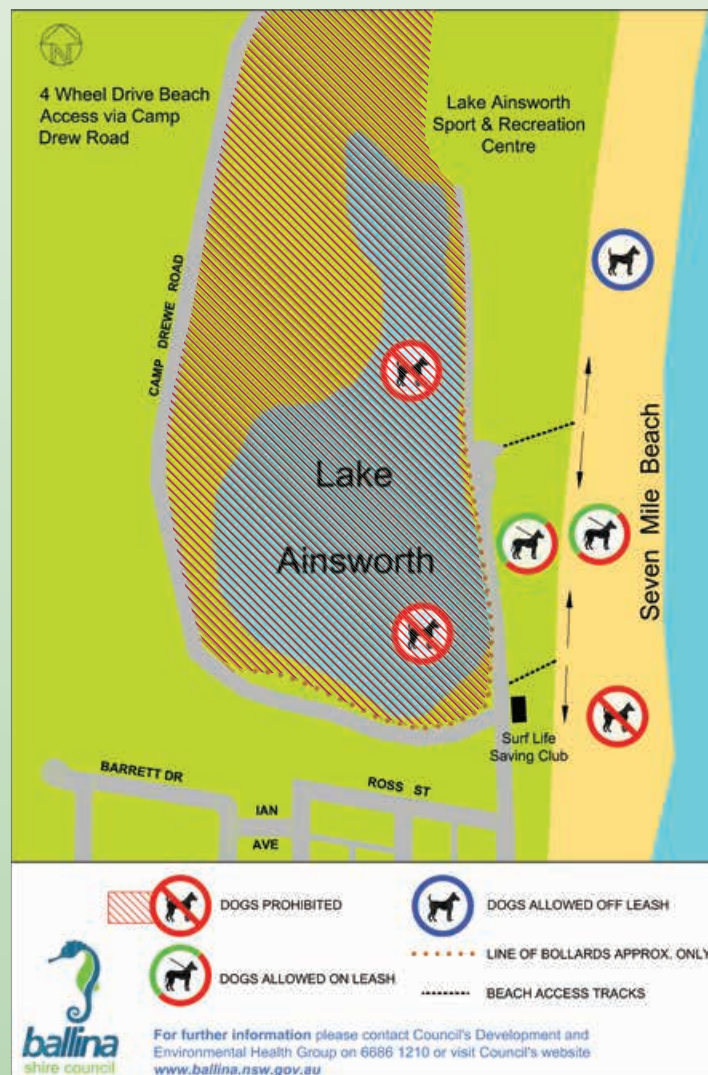


Lake Ainsworth is a Dog Free Zone

Lake Ainsworth is an important recreational area for locals and visitors and is situated in a sensitive ecological location. For this reason, dogs are banned from swimming in the Lake. Council has recently received complaints regarding the number of dogs swimming in the Lake.

To respond to these community concerns, Rangers will be increasing patrols in and around the Lake Ainsworth area. If a dog is found to be on the Lake side of the bollards, the owner or person in charge of the dog may be issued a \$330 penalty infringement notice.

Council Rangers have recently hosted information sessions at the Lake to encourage awareness on the regulations in the area. Council and the Rangers would like everyone visiting the Lake to enjoy its natural beauty, so please remember to do the right thing. Please refer to the map below on where dogs are banned in the Lake Ainsworth vicinity.





Off-leash dog exercise areas

-  **Bicentennial Gardens**
(Northern area of the reserve), Ballina
-  **Compton Drive**, East Ballina
-  **Gap Road**, Alstonville
-  **Seven Mile Beach**, North of Lake Ainsworth,
Lennox Head (old 4WD access)
-  **Ballina Heights Estate**,
Eastern Reserve Area, Ballina Heights
-  **Headlands Drive Drainage Reserve**,
Skennars Head
-  **The Spit**, Ballina

conditions of use

1. Your dog must always be under effective control. 'Effective control' means your dog responds to your command and remains close to you.
2. If your dog is not sufficiently trained to be under your effective control and shows signs of anti-social behaviour and aggression you must remove the dog immediately from the area.
3. Pick up your dog poo and dispose in a waste bin.
4. Be considerate of all other users of the area. It is not for the exclusive use of dogs and their owners.
5. Your dog must be accompanied at all times by an adult or person over 16 years.

WARNING: Dogs not being managed responsibly in these areas will be seized by Council Rangers. Thank you for your co-operation.



Pooches in public places to be on a lead

Dogs in public places must be on a lead that is controlled and held by a competent person over 16 years of age.

Dogs are not allowed in areas termed 'prohibited' such as playgrounds, The Serpentine, Shelley Beach, Lighthouse Beach and the southern end of Seven Mile Beach, Lennox Head.

Dogs are allowed on Angels Beach, Sharpes Beach and Flat Rock Beach but they must be on a lead. It's a good idea to check the signs in public places to see if dogs are allowed in that location.

For off-leash areas refer to the adjacent article.



random dog checks

Council Rangers will be increasing their patrols particularly around beaches this summer. Random checks will also be done to make sure dogs are registered and microchipped.





Frequently asked questions

WHAT HAPPENS IF MY GARBAGE COLLECTION DAY IS A PUBLIC HOLIDAY?

All kerbside waste collection services remain unchanged over the holiday period.

WILL THE LANDFILL CLOSE OVER CHRISTMAS?

The Ballina Waste Management Facility will be closed on the following public holidays:

Sunday 25th December,
Monday 26th December,
Tuesday 27th December 2016,
Sunday 1st January and
Monday 2nd January 2017

It will be open from 8 am to 4 pm all other days.

what's new?

We're working to make recycling easy. Keep an eye out for the updated dirty dozen recycling tips in our local papers.

The Twelve DOs of Christmas

In 2015 Ballina Shire Council collected a whopping 47% more recycled material in the week after Christmas compared with the previous collection week.

To make sure we're recycling right, we've put together some helpful hints to make recycling over the festive season easy.

- 1 Plan ahead to prevent food wastage.** For tips on serving sizes, the best way to store food, and recipes that use leftovers, visit LoveFoodHateWaste.nsw.gov.au
- 2 All food scraps** including meat, seafood, bones, dairy, bread, rice, pasta and of course vegie scraps can all be placed in the organics (light green lid) bin.
- 3 Don't forget all cardboard food packaging** such as paper plates, cardboard burger boxes and pizza boxes can all go in the organics (light green lid) bin.
- 4 Buy a good quality artificial tree** so it will last many years. Please do not put artificial trees in your recycling bin.
- 5 If you have a live Christmas tree**, once Christmas is over smaller live trees can be cut up and put in your organics (light green lid) bin, or bigger live trees are best taken to the Ballina Waste Facility for mulching.
- 6 Paper wrapping, cards and cardboard boxes** can go in the recycling (yellow lid) bin, or be stored to reuse whenever possible. For something different, why not personalise your wrapping paper by using some of the kid's fabulous artwork.
- 7 All hard plastics** from packaging to broken toys and even pot plants can be placed loosely into the recycling (yellow lid) bin.
- 8 Got a new phone for Christmas?** Pop into Council or your local library and pick up a resource recovery satchel to dispose of any old mobile phones and accessories, or small electronic devices. Place this satchel in your recycling (yellow lid) bin.
- 9 Save your old batteries** and either drop them off for free at our Community Recycling Centre at the Ballina Waste Facility or grab a resource recovery satchel pop the batteries in this satchel which can be placed in your recycling (yellow lid) bin. Please don't place them loose in the recycling bin.
- 10 Got a new TV, computer, printer or DVD player?** Drop off your old electronic appliances at the Ballina Waste Facility (free of charge for most E-waste).
- 11 All your glass can now go into the recycling** (yellow lid) bin. This includes bottles, jars, drinking glasses, crockery and ovenproof glass.
- 12 Like your fruit mince pies?** All your aluminium foil, whether clean or dirty, can be placed in your recycling (yellow lid) bin.

TOP TIP: Freeze seafood and foods with strong odours until the day of your bin collection.



Ballina Community Recycling Centre reuses and recycles old paint

More than 100,000 kilograms of problem waste, including paint, has so far been collected from the region's seven Community Recycling Centres (CRC).

The Ballina CRC is located at the Ballina Waste Management Centre, 167 Southern Cross Dr, Ballina and is open Mon to Sun 8am – 4pm.

The Community Recycling Centres are all about making it easier for householders to dispose of their problem waste including paint, gas bottles, oil, batteries, smoke detectors and fluoro lights.

The Community Recycling Centres are free to all NSW residents and are open year round, providing a place for people to safely dispose of their household problem waste.

Paint is the most common item dropped off at the centres, which is either sold on at the tip shop for reuse, or collected and mixed with other waste solvents to be used as an alternative to fuel in cement kilns. The metal containers are recycled. This is just one example of how the centres provide a long-term solution for disposing of problem waste and help improve recycling and reuse rates.

Most people have had these problem waste items stored in their garages or homes at some time. They can pose a danger to household members and the environment as they start to age and breakdown, and need to be disposed of appropriately.

The Community Recycling Centres are operated by your local council, working in partnership with the EPA. They are supported by the Environmental Trust as part of the EPA's Waste Less, Recycle More initiative funded from the waste levy.

To find out more about your Community Recycling Centre contact Ballina Shire Council on ph. 6686 1287 or visit www.newaste.org.au

OIL AND BINS DON'T MIX

There has been a noticeable increase in waste oil-filled containers being placed in Ballina Shire wheelie bins for kerbside collection. This is having a significant environmental impact and posing a serious safety risk to Council staff.

Waste oil containers are not always secure and often cannot handle the compaction process within the collection truck. This often results in the oil spilling or exploding over the truck, compactor, and onto the road reserve.

There is also a potential fire risk when oil drops onto a hot surface such as the exhaust adjoining the hopper.

Waste oil can be disposed of at Ballina's Waste Management Facility in a safe and environmentally friendly manner free of charge. Up to 20L per vehicle per day can be accepted.

For further enquires please contact Ballina Waste Management Facility on 6686 1287.



Waste matters
Drop off your household
problem waste



 **Community
Recycling Centres**

**Your local Community Recycling Centre
is open. You can drop off:**


Paint


Gas bottles and
fire extinguishers


Fluoro globes
and tubes


Household and
car batteries


Smoke
detectors


Motor and
other oils

Your Community Recycling Centre is located at:
Ballina Waste Management Centre
167 Southern Cross Drive, Ballina

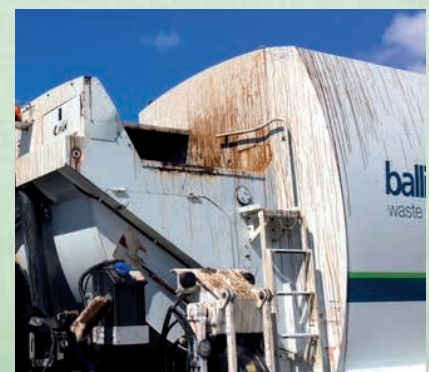
Hours: 8am–4pm every day (closed public holidays)

For more information call Ballina Shire Council on
02 6686 1287 or visit www.newaste.org.au



Only household quantities accepted 20kg or 20L
maximum container size.
This project is a NSW EPA Waste Less, Recycle More initiative
funded from the waste levy. Visit www.epa.nsw.gov.au





BACKYARD BURNING PERMITS

Ballina Shire Council has a Backyard Burning Policy that aims to prevent air pollution and eliminate smoke and odour from inefficient backyard burning.

Restrictions apply to backyard burning in urban and closely settled areas such as Alstonville, Ballina, Cumbalum, Lennox Head, Wardell and Wollongbar, however some exceptions do apply. Maps showing restricted areas can be downloaded from Council's website. Even with an exemption, obligations to prevent or minimise pollution and take into account the potential impacts on any person still apply. Breaches may lead to a penalty infringement notice of up to \$1,000.

During the Bush Fire Danger Period a fire permit may be required for fires lit in the open. There are other general requirements at other times of the year.

For further information contact Council on 6686 4444 or visit ballina.nsw.gov.au. Alternatively, phone the Bush Fire Information Line – Rural Fire Service 1800 NSW RFS (1800 679 737) or visit rfs.nsw.gov.au

Food safety during a power failure

Power failures can cause disruption to the home, and especially to the contents of a fridge.

Some simple rules can help you make the best decisions to keep you, your loved ones, or your business and customers safe from food poisoning during power failures.



- 1 **The first rule is always...if in doubt throw it out!**
- 2 **Be prepared:** stock some non-perishable foods that do not need to be refrigerated or heated up, for example UHT milk, canned foods
- 3 **Keep it cold:** keep the refrigerator door closed as much as possible. A closed refrigerator should keep food cold for 4 hours. If refrigerated food is allowed to warm for 2 hours or more, do not eat it
- 4 **Freezer:** the freezer should keep food frozen for up to 24 hours, if the door is not opened. If frozen foods have thawed out, do not re-freeze them, keep them cold and use them as soon as possible
- 5 **Caught out while cooking your meal?** If the power remains out for 2 or more hours any partially cooked food should be thrown out
- 6 **Refrigerated medications?** Please contact your pharmacist before using them

If you want to know more about food safety during power outages visit the NSW Food Authority Resource Centre website: www.foodauthority.nsw.gov.au or the NSW Health website: www.health.nsw.gov.au

Urban Stormwater Team

Back in 2012, Council adopted the Urban Stormwater Management Plan. Its aim has been to provide sustainable and effective urban stormwater systems and assets that protect the natural, social and economic values of the Richmond River, its tributaries, and the Ballina coastline.

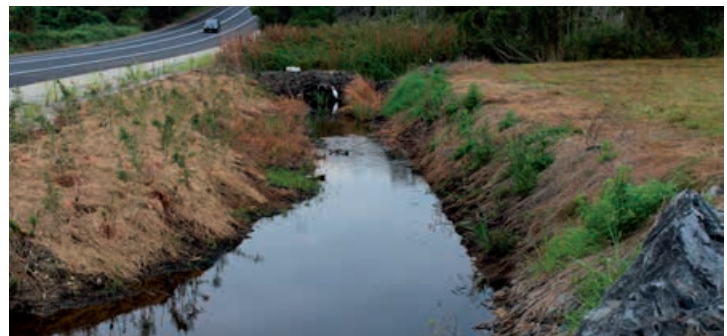
The Plan is being managed by a team of enthusiastic staff, drawn from all sections of Council in recognition of the multi-disciplinary approach needed to tackle stormwater issues, both existing and into the future. Examples of recent projects include:

- **The first stage of the Alstonville creek rehabilitation project.**

Over 3,000 (big scrub rainforest) plantings have been put in, and one metre of rubbish and sediment build up has been removed.



- **Another great success this year was the Chickiba Wetland restoration project.** This entailed clearing a one kilometre long drain and the construction of an innovative weir to allow the incremental draining of the wetland. Regrowth is already evident in numerous parts of the wetland indicating the success of this project.



- **Recognising the importance of community education, Council has just received \$95,000 in grant funding** from the NSW Environmental Trust Education Grant. This funding will be used to produce three animated videos highlighting issues surrounding the subjects of urban stormwater, rural stormwater and recycled water.



Mayor David Wright (centre) accepting the Environmental Trust Education Grant from Nationals Duty MLC for Ballina Ben Franklin and Parliamentary Secretary for Northern NSW Adam Marshall.



ON-SITE SEWAGE MANAGEMENT ROLES AND RESPONSIBILITIES OF GOVERNMENT

The design, installation and operation of on-site sewage management systems are regulated under the Local Government Act 1993.

The Role of Local Government

Is to determine applications for:

- the installation, construction or alteration of a human waste treatment device or storage facility and connected drains
- the ongoing operation of an on-site management system
- Council conducts a monitoring program of on-site sewage management systems within the local government area to ensure that those systems comply with relevant performance standards.



Council has powers to issue Orders requiring a person:

- to comply with an approval
- to take action to maintain premises in a healthy condition
- to store, treat or dispose of waste
- not to use or permit a human waste storage facility to be used, and/or
- to connect premises to a public sewer when the sewer is within 75 metres.

Orders may be given to the owner or occupier of the premises or to the person responsible for the waste or the container in which the waste is stored.

The Role of NSW Ministry of Health

Under the provisions of Clauses 40 and 41, Local Government (General) Regulation 2005, a local Council must not approve the installation of certain sewage management facilities unless they have been accredited by the NSW Ministry of Health. A certificate of accreditation may include specific requirements for the installation, operation and maintenance of the accredited on-site sewage management system.

The types of sewage management facilities to which accreditation applies include septic tanks, collection wells, aerated wastewater treatment systems, greywater treatment systems and composting toilets.



Badly maintained septic systems can cause environmental problems up to 50km downstream.

Further information about on-site sewage management systems and accreditation can be sourced from NSW Ministry of Health.



A coffee over Christmas?

Was your last year's New Year's resolution to reduce packaging?

Council staff take their coffee seriously....

And they are also taking the environmental impact of the daily coffee habit seriously too.

Coffee, for many of us, is a daily pleasure. But our takeaway cups are not such a great way to enjoy our coffee because their disposal can leave a lasting negative legacy. Most of us are guilty of using more packaging than we intend to, and kudos to some Council staff who decided to take action.

Members of our Development and Environmental Health Group have clubbed together and purchased a 'job lot' of reusable coffee cups which are user friendly for both the coffee drinker and the barista. They fit perfectly under the coffee machine and they are light to carry around when they are empty.

There are a number of companies making reusable coffee cups, and whilst we can't recommend any particular one, here are some tips for selecting a great reusable cup. Maybe there is a Christmas present idea here too?

- It should be a standard 8oz or 12oz** size so that it easily fits underneath the coffee machine.
- A lid is really good**, especially for when you are walking or driving!
- It should be easy to wash** and made from materials which are inert and not toxic to your health.
- It should look great** and you should love using it. If you don't, you'll forget it more often than not...

Finally, enjoy a local coffee in your reusable cup and you are also supporting local growers.

BALLINA MAKES WAVES IN NATIONAL WATER SCENE

Ballina Shire Council is making waves in the national water scene, with its admirable water services being rated by experts in the field and even in the Parliamentary Inquiry into Water Augmentation.

In fact, the latest Water Journal produced by the Australian Water Association (AWA) features an article with Dr Nanda Altavilla, the DPI's Recycled Water Specialist.

When asked by the AWA what she thought were the most exciting recycled water projects currently being undertaken, Dr Altavilla replied: "The one I'm most proud of that DPI Water and I were both involved with is the dual-pipe reticulation scheme operated by Ballina Shire Council, in Lennox Head."

"That's the first one in a Regional area to be approved in NSW," Dr Altavilla told the AWA.

"Initially it's small but it will be rolled out to 3700 homes over 30 years in Ballina Shire. The good thing about this one is that they're a small utility. They're not Sydney Water or another utility that has had wide experience and I think that they prove that small utilities can do this and do this well. They were independently audited and the auditor said it was one of the best schemes she had seen," she said.

Council is thrilled to be receiving recognition for its service on a national stage and thanks its dedicated Civil Services team for the implementation and operation of the recycled water service.



Community gives recycled water thumbs up

"I think the quality is excellent and I support the inclusion of recycled water into our shire over the long term." This was one of a number of similar responses obtained from a recent survey conducted by Council to gauge the level of satisfaction of local residents who were turned on to recycled water during the service's initial roll out phase in July this year.

According to the survey, a majority of recycled water users were satisfied with the quality of the service, which included its pressure, clarity and convenience.

Strategic Engineer Water and Wastewater Andrew Swan said that he was happy with the level of satisfaction depicted in the survey results but said the level of understanding could be improved.

"Two thirds of survey respondents understood that recycled water was safe for use in homes, however, results indicate that users were predominantly expending their recycled water outdoors only, and we want to emphasise that the quality of recycled water is absolutely safe for some indoor use at home, including washing clothes," Mr Swan said.

The recycled water survey not only sought feedback from local recycled water users, but from the entire community in regards to its general knowledge of recycled water to understand in some measure, how effective its community engagement on the subject had been.

"It was pleasing to see that a majority of all survey respondents agreed that the main benefits of recycled water included reducing discharge into the ocean and river, saving water, protecting the environment, planning for the future, drought, and treating wastewater as a valuable resource," Mr Swan said.

Despite Council's efforts to educate the community about recycled water, more than 70 per cent of locals surveyed reported they would like to know more.

Mr Swan said that while Council had undertaken community consultation, developed a dedicated Ballina Water website, published a regular Water Talk feature in the newspaper, distributed service updates to the local media, and had provided information kits and spoken one-on-one to residents receiving the service, "Council would listen to its stakeholders and strive to do more in this space."



WHO WOULDN'T APPRECIATE RECYCLED WATER?

Coastal Grove Estate in Lennox Head was turned on to recycled water in July this year, around the same time that Glen and Tina Davies moved in to their new home within the estate.

Glen and Tina said they couldn't understand why anyone wouldn't appreciate the service.

"It's great for the environment, good for the community and it serves its purpose of providing our home with ample quality water," Mr Davies said.

The Davies' use their recycled water for washing their car, pressure cleaning, have it hooked up to their washing machine and toilet, and use it a lot for gardening.

"We turfed the front lawn a few weeks ago and there hasn't been much rain, so we've been using the recycled water on it every day and it's looking phenomenal," Mr Davies said.

Mrs Davies said that they'd received a pack from Council about recycled water when they moved into their new home which helped them to understand more about the service.

"The pipes were all fitted before we moved in and there are purple taps to indicate where the recycled water is connected" Mrs Davies said.

Recycled water is a drought-proof source, which means it can be used during a drought. "And while the community isn't in drought at the moment, it's reassuring to know that recycled water will heavily assist if a drought transpires in the future."

According to DPI's Recycled Water Assessment Specialist Dr Nanda Altavilla in a recent interview with the Australian Water Association: "The right time to invest in water infrastructure is not when we're in crisis, but at a point when we can have a long-term vision of integrating the whole water cycle and looking at all options" – which is what Ballina Shire Council has done.



Who knew a treatment plant could be so interesting?

Council is encouraging the community to visit and receive a tour of either the Lennox Head or Ballina wastewater treatment facilities to learn how recycled water is treated into high quality water, and why.

Eddie Lee is a Year 11 student from Xavier Catholic College in Ballina who recently visited the Ballina Water Treatment Plant with his class on an excursion in relation to their environmental health studies.

Eddie said that he learnt the entire treatment process of recycled water that he'd never have known without visiting the site.

Eddie said that he learnt how recycled water is good for the community because it renews resources, particularly during periods of unsustained rainfall or drought periods.

"I really enjoyed seeing the inner functions of the treatment plant," Eddie said.

Eddie's teacher, Tanya Pearson, said the site tour was very successful and that students learnt a lot about recycled water. As a teacher, it's Tanya's job to think about her students and their futures.

"Water conservation (especially drinking water) is essential for the future of our community," Tanya said.

"It's fantastic that we are able to utilise recycled wastewater for sports fields and reticulated domestic supply rather than it being released into an estuary environment," she said.

Site tours to Ballina Shire Council's wastewater treatment facilities are available for community groups and senior students upon request. Group sizes are 10 to 15 people. For more information please email council@ballina.nsw.gov.au or phone 02 6686 4444.



A gardener's secret

Jennifer Brewley waters her vegetable garden with recycled water and says the garden is growing tremendously.

"I've had spinach, lettuce, parsley and tomatoes in there and they've grown far and wide across the span of our garden bank," Jennifer said.

Jennifer and her husband built their home in Aspects Estate in Lennox Head and part of the requirements of the new house in the estate was a connection to recycled water.

"It was required by Council and we knew it was good for the environment so didn't hesitate," Jennifer said.

"I now use it in the garden, to wash the car, and for other approved uses – and the pressure is fantastic."

Jennifer is one of many satisfied recycled water users in the community using the service after its initial launch in July, and Council is pleased that it's been such a success.

The recycled water service in the Ballina Shire originated when the community expressed a desire to reduce the amount of treated effluent being discharged into our estuaries and the ocean. Council listened, devising a plan which now uses effluent as a resource rather than something needing to be disposed of. It's no longer a problem to deal with, but a huge benefit to the community.

WATER HARDNESS

Water hardness is the measure of predominantly calcium and magnesium carbonates in water. The term results from the fact that increased levels of calcium and magnesium ions in water make it "hard" to get soap suds to form.

Hard water is formed when water passes through or over limestone and chalk deposits prior to the treatment process. The minerals are naturally occurring in all water sources. The minerals are also important components in the development of bones or shells of aquatic organisms (calcium) and nutrient for plant growth (magnesium).

The Total Hardness of the drinking water supplied within the Ballina Shire is typically in the region of 60 mg/l (there is a small variance according to the season and rainfall received). This water is classified on the border of moderately soft and moderately hard. Ideal drinking water quality should have no more than 80mg/l. The recycled water currently supplied out of the Lennox Head Treatment Plant has a water hardness of approximately 90mg/l. The hardness in the recycled water also fluctuates due to the varying weather conditions.

The table below indicates the classification levels of water hardness.

TOTAL HARDNESS CLASSIFICATION	
(mg/l as calcium carbonate CaCO ₃)	SOFT 0-30
	← MELBOURNE (26)
	← WARDELL (30)
	← CANBERRA (40)
MODERATELY SOFT 30-60	← SYDNEY (60)
	BALLINA SHIRE (60)
MODERATELY HARD 60-120	← BRISBANE (100)A
	← ADELAIDE (150)
HARD 120-180	

The evidence left in the home from hard water includes deposited off-white solids on the inside surfaces of pipes and heat exchangers (eg kettles, hot water system etc). It is usually visible on elements in kettles and can occasionally break free leaving small off-white flakes in the water. This is completely harmless to drink (and in fact the magnesium and calcium have been shown to have health benefits). The water supplied within the Ballina Shire has little detrimental effect on domestic hot water systems, dishwashers, kettles and the like, with little scaling occurring. White scale marks will also be visible on windows and other surfaces (eg your car after washing) if not wiped dry after cleaning.

Note: Wardell's water source is Marom Creek.



PROTECTING YOUR PUBLIC HEALTH



AVOID PEAK MOSQUITO BITING TIMES

In NSW most mosquitoes become active at dawn and dusk, so it's important to take extra care during these times by avoiding the outdoors, wearing appropriate clothing or applying repellent.



BE CAREFUL WHEN TRAVELLING

Stay and sleep in screened or air-conditioned rooms. Use a bed net if exposed to the outdoors. Avoid known areas of high mosquito-borne disease transmission or outbreaks.



WEAR APPROPRIATE CLOTHING

Minimising the amount of exposed skin reduces the risk of mosquito bites. Wear loose, light-coloured clothing with long sleeves and pants.



PREPARE YOUR HOME

Some mosquitoes only need very small amounts of water to breed. Remove all water containers from your yard, keep drains and gutters clear and secure screen doors, windows, and openings of rainwater tanks.



APPLY MOSQUITO REPELLENT

Use a mosquito repellent on all exposed skin areas. Avoid putting repellent near the eyes and mouth, or over open wounds, broken skin or abrasions. Always follow the product label instructions. Reapply the repellent according to instructions or when you notice mosquitoes biting.

Protect you and your family from
MOSQUITOES

Ballina Shire Council is actively involved in mosquito monitoring during the warmer months and data is given to NSW Health to help manage mosquito-borne risk. Council is also working with developers to ensure new residential areas are designed to minimise exposure to mosquitoes.

*For further information contact Council's Public and Environmental Health Section
Phone 6686 1210 or visit ballina.nsw.gov.au/Mosquitoes or health.nsw.gov.au*


ballina shire

AUSTRALIA DAY CELEBRATIONS

THURSDAY 26 JANUARY 2017

official ballina shire australia day ceremony

The official Australia Day ceremony will commence at 9am inside the Lennox Head Cultural and Community Centre and everyone is invited to attend the official proceedings.

The official ceremony includes a Special Guest Address by Alisa Camplin, Australia's first female Winter Olympic Gold Medallist, the Ballina Shire Citizenship Ceremony, and the highly anticipated 2017 Ballina Shire Australia Day Awards Announcement.

More information 6686 4444 or visit
www.ballina.nsw.gov.au



TAKE THE FREE BUS THIS AUSTRALIA DAY

Leave the car at home and catch the bus to the official Australia Day ceremony at the Lennox Head Community Centre.

The FREE wheelchair accessible bus will pick-up from the following locations:

- 7.30am** Main Street bus stop, Alstonville
- 7.45am** West Tower Shopping Centre, Kalinga Street, West Ballina
- 8.00am** Ballina Visitor Information Centre, 6 River Street, Ballina
- 8.05am** Angels Beach Drive bus stop (opp Flat Rock Road)
- 8.15am** Arrive at the Lennox Head Cultural and Community Centre

Seats are limited. Call the Ballina Visitor Information Centre on free call 1800 777 666 to book your seat.

free
shuttle
bus



australia day celebrations across the shire

Alstonville Plateau Bowls & Sports Club

10 Deegan Drive, Alstonville

Market stalls, thong throwing competition, pie eating competition, chocolate wheel, The Plateau Bogan of the Year Fashion Parade, kids show rides, face painting, bare foot bowls competition, lamington drive, free giveaways, BBQ and food stalls.

More information: 02 6628 0497

Ballina RSL Club

240 River Street, Ballina

From 10am kids entertainment including face painting, balloon twisting and a fishing competition. Jazz music by the Jim Kelly Duo live from 12 noon.

More information: 02 6681 9500 or www.rsl.ballinarsl.com.au

Ballina West Tower Tavern

89-93 Kalinga Street, West Ballina

Thong toss, dunny roll throwing, Publican's BBQ, prizes for best dressed, jumping castle. Live entertainment from 3pm. This is a free event.

More information: 02 6686 7272 or www.westowertavern.com.au

The Lennox Hotel

17 Pacific Parade, Lennox Head

JJJ Hottest 100. No cover charge.

More information: 02 6687 7312

Lennox Head Club Lennox

10 Stewart Street, Lennox Head

Free BBQ sausage sizzle 12-2pm, live music by Goldie Licious from 3-6pm and barefoot bowls \$5pp.

More information: 02 6687 4313

Other venues with live entertainment

Acts to be confirmed. Contact the venues for details.

Australian Hotel: 103 River Street, Ballina | 02 6686 2015

Slipway Hotel: 56 River Street, Ballina | 02 6686 2135

Shaws Bay Hotel: 3 Brighton Street, East Ballina | 02 6686 2034.



Are you organising a special event this festive season?

It could be a meal on Christmas Day, New Year's Eve event, Australia Day event or school holiday activity.

If you are organising something festive please let the Ballina Visitor Information Centre know so that they can inform enquiring visitors and get it listed on the destination website discoverballina.com

Get in touch with Ballina Visitor Centre staff by telephone on 1800 777 666 or email balinfo@ballina.nsw.gov.au

BREASTSCREEN NSW MOBILE UNIT RETURNS TO BALLINA

The BreastScreen NSW North Coast mobile unit will be returning until late January 2017.

BreastScreen NSW North Coast is encouraging women aged between 50-74 years living in Ballina and the surrounding region to make an appointment for a free two-yearly screening mammogram. A GP referral is not necessary, appointments take only 20 minutes.

It's important. It's free. It could save your life.

Ring 13 20 50 for an appointment now!

www.breastscreen.nsw.gov.au



Calling all animal welfare volunteers

WIRES Northern Rivers is an all-volunteer organisation seeking new members throughout the Ballina Shire. WIRES rely heavily on the generosity of caring people as it is a charity – not a government service.

If you are interested in becoming a volunteer, or need to report an injured animal sighting call WIRES 24 hour hotline on 6628 1898, or visit www.wiresnr.org to discover the many ways you can help.

New Seniors Card Directory 2017

INFORMATION AND DISCOUNTS FOR SENIORS

NSW Seniors Card has issued its annual Discount Directory for 2017.

The Directory provides information, discounts and special offers from thousands of participating businesses across NSW.

The NSW Seniors Card is one of the most commonly used services for NSW residents over the age of 60. Because of this, the NSW Government has committed additional funds to increase the number of businesses offering discounts, providing even greater value to NSW Seniors Card members.

If you are a Seniors Card holder collect your discount directory from Council's Customer Service Centre, shire libraries, Australia Post outlets and MP offices.

www.seniorcard.nsw.gov.au



buy local and invest in the place we call home

Take the stress out of last minute Christmas shopping and do it locally...

One of the best presents you can give your community is to do your shopping in our local shops.

Ballina Shire has a great range of stores and speciality shops offering loads of gift ideas, quirky treats and personalised customer service.

Make a day of it, starting with breakfast in Alstonville, lunch in Ballina and a glass of wine in Lennox in the afternoon. Fill the rest of the day browsing all of the shops in each town. Venture further afield and explore our hidden gems in Newrybar, Wardell and Eltham.

Each purchase you make helps keep someone employed and is an investment in the place we are lucky enough to call home.



What's on? COMMUNITY EVENTS

Events listed are correct at time of publication.

Visit discoverballina.com or telephone 1800 777 666 for event details.



BOXING DAY RACES

MONDAY 26 DECEMBER

Ballina Jockey Club

www.ballinajockeyclub.com.au

Family, Fun Racing is what the Boxing Day Races have come to be known. The Ballina Jockey Club has a history dating over 110 years and has been an important part of the Ballina community. The Boxing Day Races are a great local annual tradition that brings many former residents back together to celebrate and it's also a chance for visitors to enjoy the warm and friendly atmosphere.

Early Bird Tickets \$10 adults, Tickets at Gate \$15 – kids under 18 FREE.

Great entertainment for the kids including jumping castle & face painting.

Free bus transfers to and from the racecourse.

Please drink and gamble responsibly.



ALSTONVILLE NYE FAMILY FESTIVAL

**SATURDAY 31 DECEMBER
5PM – 10PM**

Alstonville Showground

Like us on Facebook

The popular Alstonville New Year's Eve event is back on again this year.

The Family Festival is being organised by the local Alstonville Agricultural Society with past festivals attracting up to 5000 people.

The event starts at 5pm and is a perfect celebration for the whole family with fun activities including great rides, kids character shows, food & drink stalls and live music and entertainment. It is an alcohol-free event and there is plenty of parking and entry is only \$2 each.

Don't miss the fantastic fireworks display, which is scheduled to start at 9.30pm.



27TH NORTH COAST STREET MACHINES ANNUAL SHOW N SHINE

SUNDAY 15 JANUARY 2017

Ballina Rugby League Football Grounds, Bentinck Street

www.northcoaststreetmachines.com.au

There will be street machines, vintage and veteran cars, hot rods and special interest vehicles, trade displays, full catering, tappet cover racing, a wheel changing competition and plenty to keep everyone occupied.

Australian Street Machine Federation members will be judging the top 10 vehicles, with many other trophies up for grabs.

It truly is a show not to miss!

Cars setup from 7am, with gates opening to the public from 9am.

North Coast Street Machines is a local not for profit car club based in Alstonville. Proceeds from this year's Show n Shine will be donated to Jodie's Inspiration to raise funds to purchase medical equipment for Lismore's oncology units. www.jodiesinspiration.com.au

coming soon

CANCER COUNCIL NSW – BALLINA SHIRE RELAY FOR LIFE

25 AND 26 MARCH 2017

Ballina Rugby League Football Grounds, Bentinck Street

www.relayforlife.org.au/ballina

The Ballina Relay For Life Committee pictured have been busy making preparations for the 2017 Relay For Life Event.

Relay For Life is a fun and moving overnight experience that raises vital funds for the Cancer Council's research, prevention, information and support services. Relay is a chance for the Ballina Shire community to recognise and celebrate local cancer survivors, patients and their carers, to honour and remember loved ones lost to cancer and to raise money to help save more lives.

Join the thousands of Australians who take part in Cancer Council's Relay For Life each year in the fight against cancer. Make preparations to start or join a team in the Ballina Shire 2017 Relay today!





ballina

coast & hinterland

WHAT TO DO DURING THE SCHOOL HOLIDAYS?

Looking for something to do with the kids or grandkids over the school holidays? There's something to please all interests including educational, sporting, family fun and creative activities to keep the kids, and you, entertained.

Visit the Ballina Visitor Information Centre, 6 River Street, for your copy of the School Holiday Program or download a copy from discoverballina.com

If you're hosting an activity in the Ballina Shire contact the Visitor Information Centre on 1800 777 666 or email your details to balinfo@ballina.nsw.gov.au



Discover Your Own Backyard

The new Ballina Coast and Hinterland Visitor Guide is filled with information about what to see and do around our beautiful shire and is a great resource for visitors and locals.

We have printed 110,000 copies that have been distributed to visitor centres in NSW and south east Queensland. We have also sent some down to Melbourne.

Our aim is to encourage visitors to explore our region, stay longer and come back again.

If you would like a copy of the 2016/17 Ballina Coast and Hinterland Visitor Guide please contact the Ballina Visitor Information on 1800 777 666 or visit us at 6 River Street, Ballina.

market calendar

Discover original artworks, handicrafts, fashion, jewellery, secondhand goods, as well as fresh local produce...or just sit back, relax and enjoy the sights and sounds of your local market.

BALLINA FARMERS MARKET (Weekly)

Every Sunday morning

Closed Christmas Day.

Open New Years Day.

7am - 11am

Commemoration Park
Bentinck Street
Ballina

EAST BALLINA LIONS CLUB COMMUNITY MARKET (Monthly)

Every third Sunday

7am - 11am

Canal Road (between Saunders
Oval and Ballina RSL Bowling Club)
Ballina

LENNOX HEAD COMMUNITY MARKET (Monthly)

**Every second and fifth
Sunday of the month**

8am - 2pm

Lennox Head Community Centre
Lennox Head

THE PLATEAU MARKET AT ALSTONVILLE (Monthly)

Every second Sunday

8am - 2pm

Alstonville Showgrounds
Alstonville

There's a craft market, a car-boot market or a farmers market, somewhere in the Northern Rivers, every weekend.

View the Northern Rivers Market Guide at discoverballina.com to see where the markets are this week!

connected community



current exhibitions

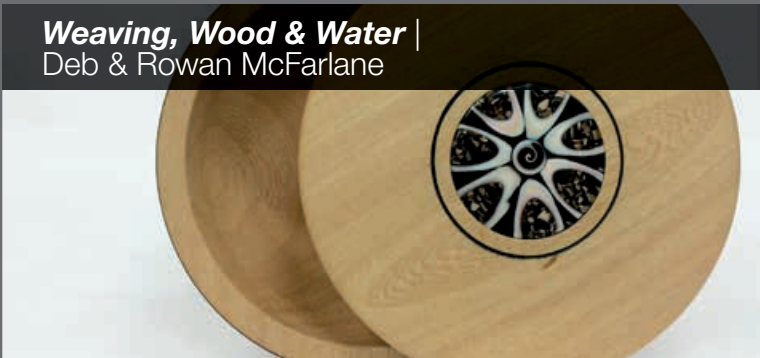
Exhibition Dates: 4 January – 29 January 2017 | Launch Event: Thursday 5 January 2017



Secrets of the Rainforest | Tim Roberts

Inspired by Tim's daily work as a professional bush regenerator. This exhibition presents a series of illustrations of the foliage, flowers and fruits of our local rainforest plants. The originals are drawn 'live', on clear acetate cell, with nib pen dipped in ink, then coloured with acrylic paint.

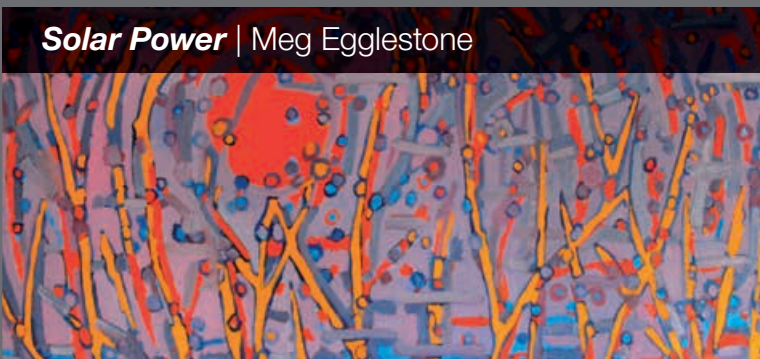
Image: Tim Roberts, *Stenocarpus sinuatus*



Weaving, Wood & Water | Deb & Rowan McFarlane

Deb's freestyle picture weavings and Rowan's ingenious wood turning skills combine to present a unique and interesting blend of raw materials that are inspired by and represent a vibrant coastal landscape.

Image: Rowan McFarlane, *Wood turned box*



Solar Power | Meg Egglestone

Solar Power is an exhibition that can only be described as an adventure into the spontaneity of abstraction through painting. A passion for the power and warmth of the sun and a sense of being a singular entity in this vast universe stretches the artist's imagination.

Image: Meg Egglestone, *Mull and Muse*

JANUARY 2017

the gallery shop



The **NRCG Gallery Shop** features unique and locally handcrafted jewellery, giftware and greeting cards and is a popular destination for locals and visitors seeking special gifts and homewares this holiday season. Every purchase from the NRCG shop supports local artists and craft people throughout the region.

Images (L-R): Jen Banks; Zani McEnnally; Lucille Atkins; Brooke Clunie; Penny Evans.

nrcg
northern
rivers
community
gallery



art at the airport

Exhibition Dates: 3 November 2016 – January 2017

Nikky Morgan-Smith



The works of local artist Nikky Morgan-Smith are both humorous and dark, embodied in metaphors that carry stories and observations of the artists life. Wing Song is an exploration of flight and movement.

The idea of flight is often associated with human aspiration for release from physical limitation. Many people have experienced dreams of flying and the sensations that these subconscious excursions evoke.

Image: Nikky Morgan-Smith, *The Wings that Make us Fly*

ART AT THE AIRPORT

upcoming exhibitions

Exhibition Dates: 1 February – 26 February 2017 | Launch Event: Thursday 2 February 2017

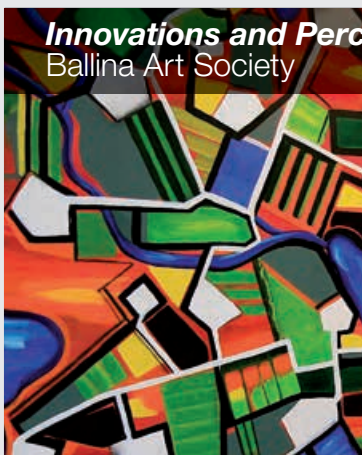
Replanting Riverbanks | Michael Chapus



Paintings about paintings, to please the eyes; To entice the gaze, and to harmonise; Collected impressions of fleeting locations; Evolving through time and fomenting mutations; Resting places for contemplative minds.

Image: Michael Chapus, *Composition no. 10*

Innovations and Perceptions | Ballina Art Society



Ballina Art Society proudly presents its best and innovative works produced in recent years leading up to 2016.

Image: Helen Craig, *Green Fields or Gas Fields*

FEBRUARY 2017

Exhibition Dates: 1 March – 26 March 2017 | Launch Event: Thursday 2 March 2017

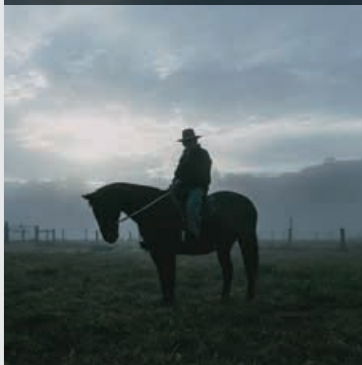
Our Ballina Table | Group Exhibition



Our Ballina Table is a collection of recipes and stories from a school community and a window onto Ballina's gorgeous, fragrant and colourful backyard. Our Ballina Table is a fundraising initiative by Emmanuel Anglican College.

Image: Wanda Chin, *Chilli Prawns*

If These Halls Could Talk | Arts Northern Rivers



If These Halls Could Talk was a multi-arts project developed by Arts Northern Rivers who commissioned renowned artists to transform seven halls across the Northern Rivers into site-specific works. This exhibition showcases some of the outcomes achieved.

MARCH 2017

nrcg | northern rivers
community gallery

44 cherry street, ballina nsw 2478 | ph 02 6681 6167
open wed – fri 10am – 4pm | weekends 9.30am – 2.30pm (closed public holidays)



CBD Roundabout Public Art Project

Artist Leith Walton has been selected by the Public Art Advisory Panel to provide artworks for two roundabout sites in the Ballina CBD at Cherry/Tamar Streets and Fawcett/Moon Streets.

The artwork depicts local seabirds, an osprey on the Cherry Street roundabout and a sea eagle on the Moon Street roundabout. The metal birds are supported on poles made from timber sourced from the old Teven bridges. The birds are to be constructed from laser cut cor-ten metal and powder coated stainless steel with wing designs inspired by local waterways and coastlines. The upright poles are to be adorned with fish designed by local students.

The selection follows a two-step process that involved an initial Expressions of Interest for concept ideas where 11 artists submitted proposals. After assessment and ranking of the proposals received, two artists were invited to participate in Stage Two of the project. This stage of the project involved the artists developing their preliminary concept ideas to include detailed visual documentation of the work, a conceptual statement about the proposed work describing its relationship with the site and its impact on the public domain, a summary of anticipated maintenance requirements, and a detailed cost plan.

The next stage of the project will involve the formal commissioning of the artist, design development, fabrication, construction, and installation. The current timeframe for finalising this project indicates August 2017, however it is anticipated that the works may be installed sooner.



12 DAYS OF A ROAD SAFE CHRISTMAS

What better gift than keeping your family safe on the road this Christmas? These 12 tips will help you:

BIKE SAFETY:

1

If you're buying a new bike, make sure it's the right size (do the Fit Test) and the right type. Get a practical model for riding to school and around town. Consider a mountain bike for off-road trails. Cyclists must also have a helmet (choose one that meets Australian Safety Standards) and a bell.



2

MOTORISED SCOOTERS:

Buy a flag to improve your visibility for pedestrians and motor vehicles.

SKATEBOARDS & SCOOTERS:

3

Remember to get wrist, knee and elbow guards. Skateboard helmets are not the same as bike helmets. Skateboard helmets are designed to protect your head from small crashes (like falling off at low speed at skate parks and driveways), while bike helmets help protect your head from a big crash (like colliding with a car).



4

DRIVING LESSONS:

If you have a new or learner driver, consider the gift of driving lessons. Also check out the Safer Drivers Course at www.geared.com.au

KIDS BIKE SEATS:

5

If you are taking small children out on your bike, invest in a children's bike seat and get the seat belts fitted correctly. Check the Handbook for Bicycle Riders at www.rms.gov.au

MOTORBIKE PROTECTION GEAR:

6

Helmets, jackets, boots, gloves, and impact protectors can reduce injury in a crash. Check out the Roads We Ride – Putty Road motorbike safety video on YouTube. Pick up your Base Ballina Motorcycle Touring Guide from the Visitor Information Centre, 6 River Street, Ballina.

PET RESTRAINT:

7

If your pet dog or cat is travelling with you in the car, make sure they are secured in a travel crate, or with a harness and restraint. This will help keep them safe in a crash, and reduces driver distraction.



8

CARAVANS:

Know your tow ball weight limits and use ball weight scales to make sure you are loaded correctly to prevent sway.

SPLURGING ON A NEW OR USED CAR?

9

Check the ANCAP safety ratings of new cars at www.ancap.com.au, and used cars at www.howsafeisyourcar.com.au. **Note:** Motorised skateboards (electric or petrol engines), motorised segways, and petrol powered bicycles are not for use on footpaths, in car parks or in parks.

CHILD RESTRAINTS:

10

It is a legal requirement for children to be in a child car seat. Choose the correct size and type for your child's age. Visit www.childcarseats.com.au or check out The Wiggles' new song about buckling up on YouTube.

REFLECTIVE GEAR AND PORTABLE FIRST AID KITS:

11

Bike reflectors and reflective vests in case you need to change a tyre. Pop a first aid kit in the boot or under the car seat in case of emergency.



12

HEAVY VEHICLES:

Vehicles or vehicles with trailers with a Gross Vehicle Mass over 12 tonnes are required to carry three warning triangles.



Play it safe this festive season

Play it safe this holiday season by making sure children are supervised and are playing in a safe place. Roads, carparks, footpaths and driveways are not safe.

Make some family rules and stick with them:

- Always play in the backyard
- Don't play in the driveway
- Don't follow your ball onto the road.

Avoid a driveway tragedy:

- **Supervise:** When kids are around driveways, make sure they are supervised by an adult holding their hand
- **Separate:** Treat the driveway like the road. Separate children's play areas from garages and driveways
- **See:** All vehicles have a blind spot. Drivers should walk around their vehicle before starting the engine or moving it. Make sure children and visitors are in a safe place before starting the engine.



Road safety bingo card

If you have a long trip coming up, why not keep the kids occupied and educated with this road safety bingo card?



Christmas Hampers

Ballina Visitor Information Centre has Christmas all wrapped up so you can relax and spend time with those who matter most.

They have a huge range of local produce to make your special someone their very own Christmas Hamper.

Choose from indulgent local giftware, natural cosmetics, handmade craft ware, jewellery and scrumptious gourmet produce including Ballina Honey, Duck Creek or Summerland House Farm Macadamia Nuts, Hightrees Estate Coffee, Koala Tea, Brookfarm Muesli, Wallaby Bites, or Rainforest Food conserves.

Gift hampers can be made to order to the value of your choice starting from \$25 per hamper.

Come in to the Ballina Visitor Information Centre at 6 River Street or phone 1800 777 666 and discover for yourself the magic of giving this season.



park lane theatre
lennox head presents...



The Australian Bee Gees Show
40th Anniversary of Saturday Night Fever
Wednesday 23 August 2017, 8.00pm



Damien Leith performs Roy – A Tribute to Roy Orbison – The Hall of Fame Tour
Saturday 8 April 2017, 8.00pm



RAW: Northern Rivers Presents CUSP

On Thursday 16 March 2017, Park Lane Theatre, Lennox Head will come alive with displays and performances from up to 30 of the local region's most exciting creatives.

RAW: natural born artists is an artistic showcase that is designed to create a platform for emerging artists. Originating in the United States, the RAW brand showcases in over 70 cities around the world, and now it's coming to Lennox Head, debuting RAW, Northern Rivers.

RAW showcases are dynamic displays of the best of what our cultural community has to offer; each event could be a mix of anything from visual art, jewellery making, sculpture, dance, live music, fashion parades, performance art, design, photography, and much more.

It is an exciting, vibrant night of variety in its layout and program, and a fantastic opportunity for local creatives to network and enjoy a shared experience. RAW also provides opportunities for artists to learn how to promote their work, and build their brand.

Featured artists include Pretty Soul, The Froth Lab, The Paper Quill, Art Circle, Amy Leone, Caroline Lejeune, Sugarbeam, Jarrah Wells, Sarah Jane Jones, Julz Davidson, I Am Elini, Julia Jay, and more still to be announced.

RAW 'CUSP' will debut at Park Lane Theatre Thursday 16 March, 2017. Doors open 7pm. Show commences 7:30pm.

To book tickets visit <https://www.rawartists.org/tickets/purchase/2017>

For more information visit: <http://www.rawartists.org/northernrivers/cusp>

Park Lane Theatre is a licensed venue. Food and beverage will be available at the abar. All patrons under the age of 15 must be accompanied by a responsible adult. Artists are encouraged to register at www.rawartists.org



Looking for fun and affordable activities for the kids these holidays?

Come along to a jam-packed school holiday Kidz Klub at Lennox Community Centre, featuring a fantastic array of activities including sport-based games, arts and crafts, dress ups and so much more!

Kidz Klub is great value at just \$25 per half day, or \$50 for a full day, and you know your kids will have a fantastic time in a safe and exciting environment.

Kidz Klub starts 4 January 2017, so call 02 6687 6291 or email communityspaces@ballina.nsw.gov.au to secure your place today.



To find out what is happening in your local community space visit communityspaces.com.au or Like us on Facebook.



Engineering Awards

Ballina Shire Council has received a highly commended in the Institute of Public Works Engineering Australasia (IPWEA) NSW Engineering Excellence Awards for the category Design and Construction of a Local Government Public Works Project.

The project nominated for the award was the Changing Places toilet facility located in Tamar Street Ballina, which opened earlier this year. The facility includes two unisex toilets and a conventional accessible toilet. The facility allows people with a severe or profound disability and their carers to enjoy day to day activities many of us take for granted.



Andrew Swan, Council's Water and Wastewater Engineer accepting the award on Council's behalf. Andrew also received a highly commended for his contribution to engineering.

2016 Local Government Environment Awards

Are we sustainable yet?

The LGNSW Awards for Environmental Excellence judges think we are at least on the right track. Ballina Shire Council was the 2016 recipient of the Local Sustainability Award, an award which is hotly contested amongst councils each year. Ballina was able to demonstrate that we had substantially improved our environmental performance across the areas we work in during 2015 and 2016 using teamwork, innovation and persistence. This award was not due to any one particular project, but a cumulative improvement across the board. We are very proud of all our staff in any case, but particularly in terms of saving money, energy, water, carbon emissions and generally helping Ballina Shire to be a beautiful place to live and work.

Council also won an award in the Water Conservation category for its Pressure Leakage Management Plan, the implementation of which saves very large amounts of water by ensuring the pressure is optimal throughout the water supply system. It sounds simple, but getting this right is quite complicated so Council was very pleased to also win this award.

Finally, Council also received a Highly Commended for its work on the Chickiba Wetlands area adjacent to Angels Beach Drive.



Suzanne Acret, Council's Sustainability Programs Coordinator with Council's awards.

Novaskill Awards

The Novaskill 2016 Northern Rivers Apprentice and Trainee Awards were held on Thursday 17 November.

The awards celebrate outstanding achievements of apprentices and trainees and vocational students in our region.

Council apprentice Myles Burgess was awarded "Apprentice of the Year" and trainee Bridget Hogan was awarded "RTO Trainee of the Year". Council achieved the "Large Employer of the Year" Award.

Congratulations to Myles and Bridget for this achievement early in their careers.



RTO Trainee of the Year – L to R: Bridget Hogan with Paul Hickey, General Manager, Ballina Shire Council.



Apprentice of the Year – L to R: Simon Osbiston, Myles Burgess and Paul Hickey.



LATEST NEWS FROM *ballina byron* gateway airport

Departures				
Departs	Airline	Destination	Arrivals	
06:30	REX	SYDNEY	08:20	
09:15	JETSTAR	SYDNEY	10:40	
11:30	FLYPELICAN	NEWCASTLE	12:50	
11:45	JETSTAR	SYDNEY	13:10	
12:30	JETSTAR	MELBOURNE	14:40	
12:50	VIRGIN	SYDNEY	14:15	
13:20	REX	SYDNEY	15:10	
15:00	VIRGIN	SYDNEY	16:25	
16:45	JETSTAR	SYDNEY	18:10	
18:50	JETSTAR	MELBOURNE	21:00	

*All flights/times are subject to change. Details must be confirmed with the relevant airline.

Please Take Your Seat

Ballina Byron Gateway Airport has received fantastic news with some 12,500 extra seats provided for the upcoming summer holiday period (Dec 2016 and Jan 2017).

These additional seats include some 7,500 more seats to and from Melbourne, 4,500 on the Sydney route and 500 extra seats on the Newcastle service.

This additional capacity is a great show of confidence from our airline partners in the local region and the local airport. This adds to our reputation as a fantastic destination and a rapidly growing airport.

The annual passenger figures at September 2016 have now reached a new record of 474,144 (up 7 per cent on September 2015) and are now forecast to reach 500,000 in 2017.

The average load factor across all destinations and in both directions was 81 per cent for the past 12-month period.

The additional seat capacity will provide for more visitors to our region, more options for local residents to travel interstate and intrastate, and more frequency of airline services.

We believe that this extra capacity will provide for even more destinations and more services in the near future and improved opportunity for everyone to fly local.

CAGRS DUE TO COMMENCE

The Certified Air Ground Radio Service (CAGRS) at Ballina Byron Gateway Airport is due to commence operations in January 2017.

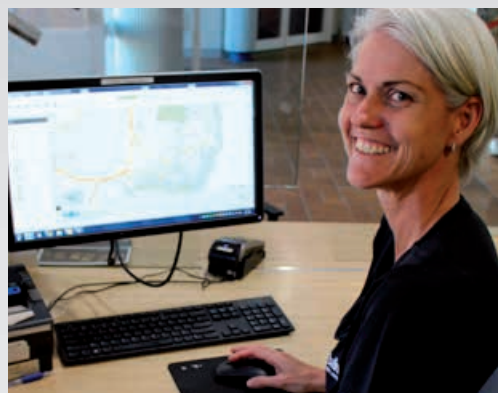
By providing improved communication between the airport and pilots, the arrangements essentially mean a radio operator located within the fire station can advise aircraft on approach of the location of other aircraft in the area for enhanced safety.

A CAGRS will operate for all regular passenger transport in and out of the airport in line with Civil Aviation Safety Regulations.

Ballina Byron Gateway Airport General Manager, Neil Weatherson, said "the airport was pleased to have come to this arrangement with Airservices Australia. This new and improved level of communications will see a radio operator work from within the elevated Airservices Aviation Fire Station and advise incoming and departing aircraft of other aircraft within sight of the runway."

This new service meets a recommendation made by the Civil Aviation Safety Authority in a regular Supplementary Airspace Review.

The contractual arrangement provides for access to the fire station under a site licensing agreement and for cost recovery by Airservices.



Council releases online Interactive Mapping

Council is working towards providing more of their services online. Council's latest project was to include an Interactive Mapping solution as part of its Online Services suite.

Here you will find maps created by Council's Geographical Information System (GIS) section. The public mapping service allows you to:

- search for properties within the Ballina Shire Local Government Area
- take a look at the Local Environment Plan (LEP)
- search for parks, open spaces, community facilities and aerial imagery
- check out environmental information and much more.

To access, visit Council's website at www.ballina.nsw.gov.au, under 'Online Services' section there is a link to 'Interactive Mapping' or phone Ballina Council's GIS team on 02 6686 4444.



around the **business chambers**

ALSTONVILLE WOLLONGBAR CHAMBER OF COMMERCE

With the holiday season now upon us the Alstonville Wollongbar Chamber of Commerce is participating in two great upcoming events.

The Ballina Shires only community New Years Eve event is being held at the Alstonville Showgrounds. This all weather festival will have loads of entertainment for the whole family, with Prime Possum, What's Cooking and Outback Capers entertaining the young ones and spectacular fireworks at 9.30pm. The Chamber is also sponsoring a "Bogan Style" Australia Day celebration at the Alstonville Plateau Sports Club.

So for those of you who think you're fitter than a Mallee bull you can try your luck at the thong-throwing and pie eating competitions.

There will also be a bogan fashion parade and more BBQs and aussie food than you can poke a stick at.



BALLINA CHAMBER OF COMMERCE

Ballina Chamber will be kicking off its 2017 program with a Business After Hours on Tuesday 7 February.

Business After Hours are run by the Chamber and hosted by a different Chamber Member every month. These events provide members with a valuable networking opportunity in an informal setting and give the host a chance to showcase their product and service to fellow members who, in turn, become a powerful marketing force via word of mouth. Business operators across the Ballina Coast & Hinterland are encouraged to come along to a Chamber event to see if Chamber membership will be of benefit to them.

On Thursday 9 March the Chamber will be hosting its annual International Women's Day Lunch at the Ballina RSL Club. International Women's Day is a global celebration of the economic, political and social achievements of women in the past, present and future. It is a day when women are recognised for their achievements, regardless of divisions, whether national, ethnic, linguistic, cultural, economic or political.

Keep an eye on the Chamber website www.ballinachamber.com.au for details of speakers. Tickets will go on sale early February.

If you're stuck for Christmas gift ideas here's the perfect chance to get your last minute shopping done all in the one place.

You can support our local Ballina businesses and take the hassle out of last minute Christmas shopping at the River Street Footpath Sale on Thursday 22 December from 5pm-8pm.

It's easy shopping with tables out the front of participating businesses in River Street. There will be a huge variety of gifts available to suit everyone with plenty already gift wrapped and ready to go!

LENNOX HEAD CHAMBER OF COMMERCE

The year 2016 has been a very effective one for the Lennox Head Chamber of Commerce Inc.

We have delivered a highly successful Love Lennox Festival – for the fourth year running, 2015 Lennox Community Carols event, monthly Business After Hours networking events and bi-monthly Business Breakfasts featuring entertaining and informative guest speakers. And who could forget the hugely successful, progressive and fun 2016 Lennox Head Business Awards.

On Wednesday, 23 November 2016, the Annual General Meeting was held at Club Lennox, Lennox Head. During this meeting the new Executive Committee was elected for 2017. It is with great pleasure and pride that we announce the new team.

PRESIDENT:

Debbie Smith
North Coast Holiday Parks Lennox Head

VICE PRESIDENT:

Jason Shrieves
Boat Channel Boardracks

SECRETARY:

Aga Deblaise
The Media Cauldron

TREASURER:

Sue Brennan
Lines End Pty Ltd

COMMITTEE MEMBERS:

Christopher Nott – *CN2480 Photography*
Steve Plummer – *Lennox Holiday Apartments*
Clayton Papillon – *Lois Buckett Real Estate*
Jason Dwyer – *Lake Ainsworth Sport & Recreation*
Josh McIntosh – *All Pest Solutions*

Through this new and stellar line up of local volunteers we're looking forward to kicking off 2017 with renewed enthusiasm, abundance of energy and bright ideas. We, the Executive Committee, can't wait to reach out to our local businesses with relevant information, events and membership benefits.

We'd like to invite all local businesses to join or re-join our Chamber membership in 2017. Connect with your fellow business community members in building up our great region for our businesses, residents and visitors.

See you in 2017.

Council services over Christmas / New Year period 2016/2017

LOCATION	CLOSING	REOPENING
Customer Service Centre	3pm Friday 23 December 2016	8.15am Tuesday 3 January 2017
Libraries Alstonville, Ballina and Lennox Head	12noon Saturday 24 December 2016	9am Tuesday 3 January 2017 for Ballina and Lennox Head 9.30am Tuesday 3 January 2017 for Alstonville
Northern Rivers Community Gallery	Gallery Shop closed from 2.30pm Friday 23 December 2016 Gallery Exhibition spaces will be closed for maintenance from Wednesday 21 December	Shop 10am Wednesday 4 January 2017 Gallery 10am Wednesday 4 January 2017
Waste Management Centre	Sunday 25 December 2016 Monday 26 December 2016 Tuesday 27 December 2016 Sunday 1 January 2017 Monday 2 January 2017 Bins will be collected as usual on public holidays	8am - 4pm 7 days a week except public holidays Please have bins kerbside by 5am on your normal collection day, as start times and the order of collection may vary.
Alstonville Swimming Pool	Christmas Day only	10am - 6pm Boxing Day and New Years Day, usual hours of operations: 6am - 6pm Monday-Friday, 8am - 6pm Saturday, 10am - 6pm Sunday
Ballina Pool and Waterslide	Christmas Day only	Ballina waterslide open from 10am - 4pm 9am-5pm from Boxing Day until and including New Years Day usual hours of operation: 6am - 6pm Monday-Friday, 8am - 6pm Saturday, 9am - 6pm Sunday
Burns Point Ferry	12noon Sunday 25 December 2016	5.30am Monday 26 December 2016
Community Spaces Alstonville Leisure & Entertainment Centre Ballina Surf Club Jingi Wahla rooms Kentwell Community Centre Lennox Head Cultural & Community Centre Richmond Room	Administration office closes 3pm Friday 23 December	8.30am Tuesday 3 January 2017 The Community Centres may be hired on public holidays by prior arrangement with Council staff.
Visitor Information Centre	Christmas Day only	9am - 5pm 7 days a week
After hours emergency number 6626 6954	Emergency calls concerning water, sewerage, roads, stormwater and health matters.	

Don't dispose of me yet

Use this issue of Community Connect to wrap kitchen waste and dispose in the green organics bin.

Councillors are here to represent your views. Councillors are elected in Wards, however each Councillor represents the entire community and can be contacted on any matter. You can contact Councillors in person, by phone or email.

your councillors



Cr David Wright
phone 0415 965 403
david.wright@ballina.nsw.gov.au

MAYOR



Cr Keith Williams
phone 0418 504 644
keith.williams@ballina.nsw.gov.au

WARD B



Cr Phillip Meehan
phone 0408 349 833
phil.meehan@ballina.nsw.gov.au

WARD A



Cr Jeff Johnson
DEPUTY MAYOR
phone 0407 651 948
jeff.johnson@ballina.nsw.gov.au

WARD B



Cr Stephen McCarthy
phone 0407 841 149
stephen.mccarthy@ballina.nsw.gov.au

WARD A



Cr Sharon Parry
phone 0408 683 052
sharon.parry@ballina.nsw.gov.au

WARD C



Cr Nathan Willis
phone 0434 154 782
nathan.willis@ballina.nsw.gov.au

WARD A



Cr Benjamin Smith
phone 0415 482 412
ben.smith@ballina.nsw.gov.au

WARD C



Cr Sharon Cadwallader
phone 0413 091 440
sharon.cadwallader@ballina.nsw.gov.au

WARD B



Cr Eoin Johnston
phone 0407 416 149
eoin.johnston@ballina.nsw.gov.au

WARD C



council contact information

Ph: 02 6686 4444
Fax: 02 6686 7035
Email: council@ballina.nsw.gov.au
Web: ballina.nsw.gov.au
Street Address:
40 Cherry Street, Ballina
Postal Address:
PO Box 450, Ballina 2478
Office Hours:
8.15am to 4.30pm Mon-Fri
(excluding public holidays)
After hours contact: 02 6626 6954

Council's Community Access Points:

Meeting agendas and documents on exhibition can be viewed at Council's Customer Service Centre; Alstonville, Ballina and Lennox Head Libraries and Council's website ballina.nsw.gov.au

Photo contributors: Tony Partridge (cover banner), Chris Nott of CN2480, Northern Star, NSW DPI, Novaskill, IPWEA, Eventpix.