

## Maintaining Sediment and Erosion Controls

Proper maintenance of erosion and sediment controls is vital to their success.



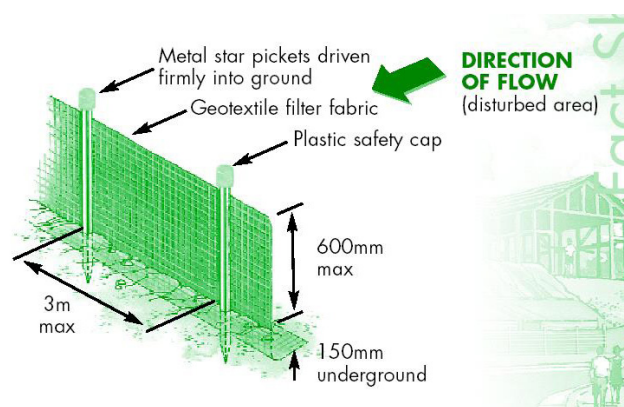
All sediment and erosion controls should be checked at least once each week and after each rainfall event to ensure they are working correctly and identify required maintenance.

Maintenance may include:

- removing sediment trapped in sediment fences, catch drains or other areas
- topping up the gravel on the stabilised entry/exit point
- repairing any erosion of drainage channels
- repairing damage to sediment fences.

Remember that sediment and erosion controls might need to change as the slope and drainage paths change during the construction phase.

Best practice includes anticipation of the potential risks and being prepared for unusual circumstances, such as having spare sediment fence material on site and keeping an eye on the weather.



### Further Information

Ballina Shire Council  
Development and Environmental Health  
Ph: 02 6686 1210  
[www.ballina.nsw.gov.au](http://www.ballina.nsw.gov.au)