



LENNOX
COMMUNITY GARDENS

Lennox Community Gardens application

"AS LONG AS ONE HAS A GARDEN, ONE HAS A FUTURE"

- FRANCES HODGSON BURNETT, **THE SECRET GARDEN**

EXECUTIVE SUMMARY

Organisation Name	Lennox Community Gardens Inc
Structure	Incorporated, not-for-profit community group
Incorporation Registration	INC1501033
Insurance	Site management and public liability (\$20 million max. liability)
Primary Contact Person	Jimi Gatland (President)
Mobile No.	0410 174 050
Email Address	lennoxcommunitygardens@gmail.com
Website	www.lennoxcommunitygarden.weebly.com

DEFINITIONS

The Garden	The community garden proposed to be constructed within Ocean Breeze Reserve
The Group	The incorporated entity formally known as Lennox Community Gardens Inc



TABLE OF CONTENTS

1.0 BACKGROUND	3
2.0 LENNOX COMMUNITY GARDENS INC	4
2.1 Management Committee.....	4
2.2 Meetings.....	4
2.3 Partnership with MullumSEED	4
2.4 Aims & Objectives.....	5
2.5 Gardening Method	5
2.6 Welcome Pack	5
3.0 EXISTING COMMUNITY GARDENS.....	6
4.0 OCEAN BREEZE RESERVE	7
4.1 Location	7
4.2 Redeeming Features	7
5.0 GARDEN DESIGN.....	10
5.1 Staging	11
5.2 Easements.....	11
5.3 Fencing	11
5.4 Access	11
5.5 Car Parking	12
5.6 Materials.....	12
5.7 Water	12
5.8 Composting.....	12
5.9 Garden Beds.....	12
5.10 Orchard.....	12
5.11 Native Bees.....	13
5.12 Tool Shed.....	13
5.13 Other Structures	13
6.0 FUNDING	14
6.1 Membership Fees	14
6.2 Sale of Goods	14
6.3 Special Events	15
6.4 Donations	15
6.5 Grants.....	16
6.6 Reuse & In-Kind Support.....	16
7.0 PARTNERSHIPS & COMMUNITY ENGAGEMENT.....	17
APPENDIX A: LETTERS OF SUPPORT	18
APPENDIX B: WELCOME PACK.....	23
APPENDIX C: SOIL TEST RESULTS	26

1.0 BACKGROUND

The idea for a community garden in Lennox Head was born in 2013 with a small group of motivated local residents. The Group was officially incorporated as a not-for-profit community group on 22 July 2015.

With the assistance of the Ballina Shire Council, two sites were identified as being suitable for a community garden – one at the corner of Gibbon and King Streets and the other within the Ocean Breeze Reserve. An application was submitted on the former site in October 2015, however consent was not granted due to the unsuitability of the site. This second application focuses on Ocean Breeze Reserve which, due to a number of redeeming features outlined in **Section 4.2**, is considered The Group's preference.

On 7 June 2016, The Group met with Geoff Lawton and other members of The Permaculture Research Institute to undergo an initial site assessment and begin working on the first stages of the design process.

On 28 July 2016, Council resolved to prepare a master plan for the reserve. Phase 1 included consultation with key stakeholder groups, including The Group. Phase 2 consisted of consultation with the broader community via an on-line survey. The survey received 150 responses.

A Councillor Briefing was held on 6 June 2017 to discuss the draft Ocean Breeze Master Plan and three draft concept designs prior to it being placed on public exhibition. The material was exhibited from 15 August until 2 October 2017. 132 survey responses and two written submissions were received over this period. **A community garden was identified as the most desirable element of all proposed across the three concepts. It was identified by over 80% of participants as one of their four most desired elements.**

At Council's meeting on 14 December 2017, all Councillors voted unanimously to adopt the Ocean Breeze Reserve Master Plan, including a community garden.

The Group now seeks to enter into a tenure agreement with Council to occupy an area of land to the northeast of The Reserve. It is intended that this agreement will allow for construction of a community garden for the shared benefit and enjoyment of all Lennox Head residents.

2.0 LENNOX COMMUNITY GARDENS INC

2.1 Management Committee

The Group is an incorporated not-for-profit community group driven by an elected management committee and governed by a constitution.

On 12 August 2015, the committee was voted in at The Group's first Annual General Meeting held at Club Lennox. Its current members are as follows:

Position	Name
President	Jimi Gatland
Vice President	Fiona Kable
Treasurer	Carmen Watson
Secretary	Ricky Ballard
Ordinary Committee Member	Grant Jenkins
Ordinary Committee Member	Yolanda Bowron-Walker
Ordinary Committee Member	Nicola Foster
Public Officer	Fiona Kable

2.2 Meetings

The committee meets on the second Wednesday of every month at Club Lennox. Members of the public are also welcome to attend. Additional meetings are called as required.

Three Annual General Meetings have been held to date.

2.3 Partnership with MullumSEED

MullumSEED is a registered environmental charity which supports 12 local not-for-profit community organisations including Mullumbimby Community Gardens and Shara Community Gardens (Ocean Shores). The Group has signed a Memorandum of Understanding with MullumSEED which offers a range of benefits including:

- Advice and guidance given previous experience in establishing other community gardens
- Insurance coverage for site management and public liability (\$20 million max. liability)
- Deductible Gift Recipient status
- Auspicing for grants/funding and updates on availability
- Connections with other MullumSEED partners
- Access to useful documentation (e.g. forms and templates)
- Media and marketing support

2.4 Aims & Objectives

Our **aim** is to:

Create a working model of a cooperative, community-based garden which demonstrates, promotes, educates and advocates for environmental and economic sustainability in a healthy, diverse and supportive community.

Our **objectives** are to:

1. Produce local organic food within the town of Lennox Head

and promote ecological practices and a healthier lifestyle by growing organic produce and developing an ecosystem around this.

2. Strengthen the sense of community within the town of Lennox Head

by becoming a hub for local people, groups and families to meet in a safe place and relax and develop friendships and links.

3. Address global environmental issues

by applying local sustainable living practices and providing a site for environmental education, demonstrating sustainable gardening, recycling and living.

We hope that The Garden will become an important and vital local community hub for the Lennox Head community to actively participate.

2.5 Gardening Method

The Garden will be managed according to the principles of organic gardening which, among other things, require:

- Growing without the use of artificial fertilisers and pesticides, and
- Using open pollinated seed which is free from genetic engineering.

2.6 Welcome Pack

A welcome pack has been drafted based on that adopted by our associates at Ballina Community Gardens. Among other things, it suggests ways in which to minimise conflict and permit constructive decisions to be negotiated in the interests of all members. It sets out standards of conduct expected of members so that the experience of gardening is personally fulfilling and so that the shared experience is harmonious. A copy of the pack is attached to this application at **Appendix B**.

The pack will be provided to prospective members before they sign up, so that they have time to consider whether they are prepared to comply with its requirements.

3.0 EXISTING COMMUNITY GARDENS

Over the past few decades there has been a growing movement towards establishing community gardens and local food supplies. In the Northern Rivers alone this includes the following 19 gardens, only one of which is located in the Ballina Shire.

Location	Website
Ballina	http://ballinacommunitygardens.com.au/wp/
Cabarita Beach	https://www.facebook.com/CabaCommunityGarden
Casino	http://www.casinoneighbourhoodcentre.org.au/
Chillingham	N/A
Evans Head	http://thehivecommunitygarden.blogspot.com.au/
Grafton Healing Garden	http://www.gurehlgam.com.au/
Kyogle	http://www.kyoglefamilysupportservices.org/community-garden
Lismore	http://www.rrcf.org.au/lismore-community-garden/
Mullumbimby	www.facebook.com/MullumbimbyCommunityGardens
Murwillumbah	https://murwillumbahcommunitygarden.wordpress.com/
Nimbin	http://www.nimbinweb.com.au/resources/community_garden.htm
Pottsville	Pottsville http://www.pottsvillebeachnc.org.au/
South Golden Beach	http://www.sharacommunitygardens.org/
South Grafton	https://www.facebook.com/southgraftoncommunitygarden/
Southern Cross University	http://lexsa.com.au/your-association/clubs-societies/our-clubs-societies.html
Suffolk Park	https://www.facebook.com/Suffolk-Park-Community-Garden-101413057034066/?fref=ts
Tweed Heads	http://enidstreetcommunitygarden.wordpress.com
Uki	www.ukivillage.com.au/community/clubs/uki-garden-club-inc/
Yamba	https://www.facebook.com/Yamba-Community-Garden-301359559991356/

More information on community gardening in Australia can be found on the Australian City Farms & Community Gardens Network website at www.communitygarden.org.au

4.0 OCEAN BREEZE RESERVE

4.1 Location

Ocean Breeze Reserve is located within a residential precinct between Ocean Breeze Drive and Hutley Drive. The site is west of Byron Bay Road and the Coast Road roundabout. The reserve can be accessed on foot via pedestrian walkways from Ocean Breeze Drive and North Creek Road, or via vehicle from the eastern extent of Hutley Drive.

The reserve was dedicated to Council as part of a subdivision in 1989 and is now Council-managed land.

Land Number & Name	3102601 Ocean Breeze Reserve
Property Description	Lot 31, DP 787876
Categorisation	General Community Use
Zoning	RE1 Public Recreation under the Ballina Local Environmental Plan (LEP 2012)

4.2 Redeeming Features

The attributes that make this site highly feasible for a community garden include:

Ownership	Located on council-owned and managed land
Size	Approximately three acres of unimproved area
Slope	Generally level
Location	Central location within easy walking/cycling distance of most homes in Lennox Head
Security	Passive surveillance from 11 neighbouring houses who overlook the reserve plus passers-by. Further passive surveillance following completion of the Hutley Drive extension and construction of the adjacent Crest subdivision.
Accessibility	Multiple pedestrian and vehicular access points from Ocean Breeze Reserve and Hutley Drive
Sunlight	Limited shading and adequate year-round sunlight
Soil	Four soil samples supplied to Southern Cross University on 17 June 2016 showed good soil quality and no asbestos (refer Appendix C)
Open Space	No overhead cabling which would restrict planting
Amenity	Aesthetically pleasing location





Ocean Breeze Reserve Master Plan

Jackie Amos Landscape Architect

Master Plan

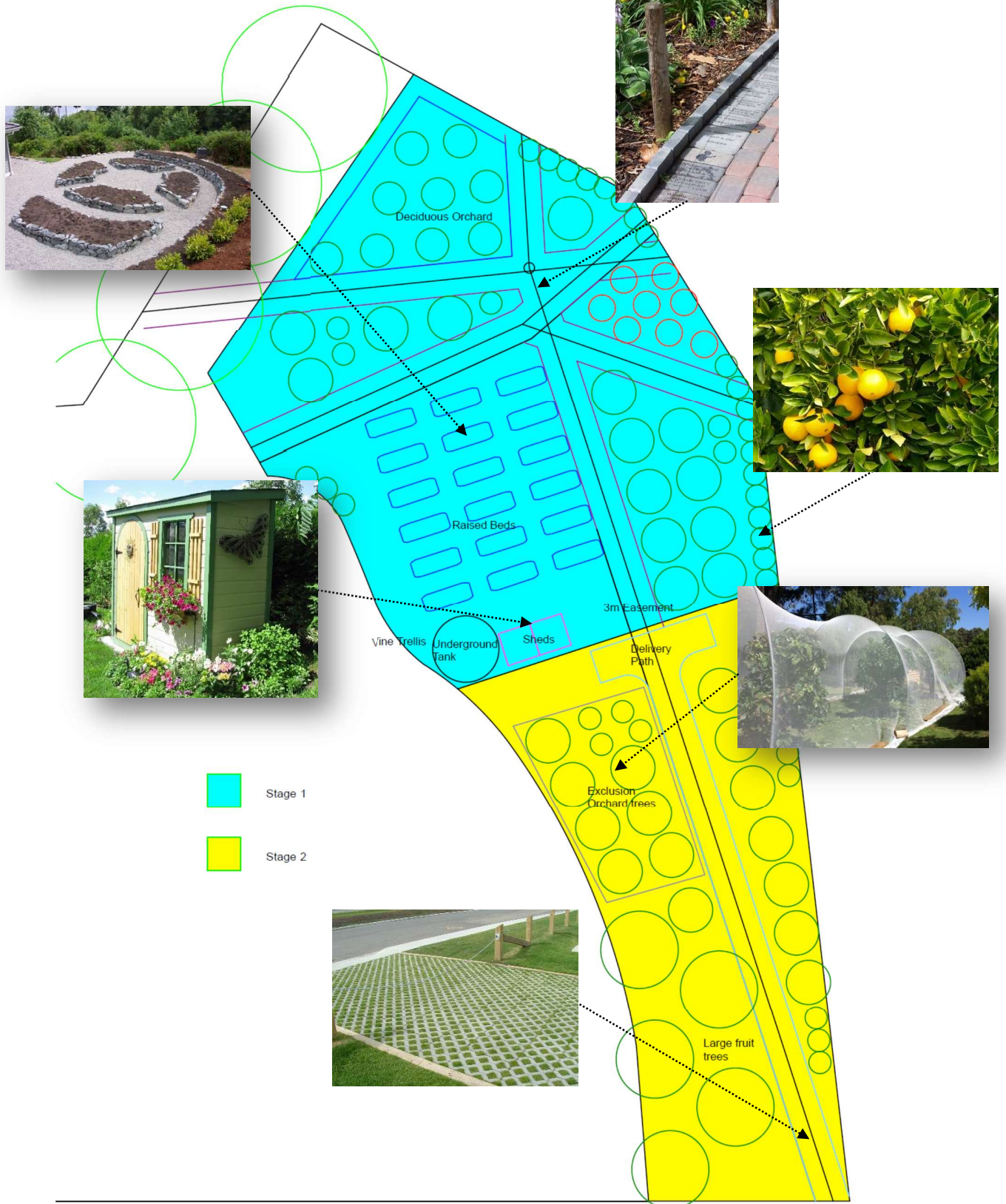


Scale 1:600

3

Nov 2017

5.0 GARDEN DESIGN



As responsible citizens of the Ballina Shire, The Group intends to make use of ecologically and socially sustainable gardening processes for the design, operation and management of the community garden.

5.1 Staging

As recommended by Council, The Group has opted for a staged approach to delivery of The Garden. The three proposed stages are detailed on the design on the previous page.

This approach will enable the founding members of The Group to establish and maintain a smaller and more manageable area until such time as funds and membership allow for expansion. It also affords greater quality control as smaller parcels of land are developed fully before moving onto latter stages.

The Group will seek Council's assistance with lawnmowing of undeveloped areas during the normal course of maintaining the reserve.

5.2 Easements

An assumed three metre easement has been incorporated into our drawings over storm water and sewer mains. No permanent structures or large trees (root issues) will be constructed/planted over these easement areas.

The Group seeks Council's direction regarding the exact location of the pipes.

5.3 Fencing

In keeping with the nature of the community garden as open for all members of the public to enjoy, The Garden will be unfenced and integrated into the wider reserve landscape. However, edible hedges will be used to:

- Provide privacy to neighbours,
- Create a visual separation from the rest of the reserve,
- Set the boundaries wherein garden rules apply, and
- Buffer against winds.

These hedges may incorporate thornless varieties of citrus, vines (e.g. passionfruit) or native plantings such as lily pily.

5.4 Access

Restricted vehicular access will be provided via the Hutley Drive extension upon its completion. This access will utilise reinforced turf cells and, when not in use, would form part of the reserve's open grassed space. Until completion of the extension, **The Group will seek Council's assistance in moving the road blocks at the current end of Hutley Drive to allow for occasional vehicular access for deliveries (e.g. soil and mulch).**

The Garden has been designed to allow for disabled access including the width of some paths and height of some raised garden beds.

5.5 Car Parking

There would be no dedicated on-site car parking for The Garden. However, public parking is currently available along Ocean Breeze Reserve and at the end of Hutley Drive. Further parallel parking will be available upon completion of the Hutley Drive extension.

5.6 Materials

Wherever possible, garden beds, paths and structures will be constructed using recycled materials, while considering aesthetics.

The Group will seek Council's assistance in sourcing reuse materials (e.g. timber sleepers, bricks, pavers etc) from demolition projects and/or the Ballina Waste Management Facility.

5.7 Water

In accordance with best practice community gardening, we intend to use water conservatively so as to minimise its consumption. This will be achieved through the:

- Creation of soils rich in organic matter and therefore capable of retaining soil moisture,
- Use of water conserving irrigation (e.g. drip lines, hand-held hoses and watering cans), and
- Use of mulch on garden beds to reduce evaporation.

Off-contour swales will be prepared to capture and control storm water run-off from the licensed area. This will be fed into a gravel and sand filtered underground tank and pumped via a solar-powered pump as needed for use.

5.8 Composting

Compost will be produced using sub-surface bucket systems which provide a safe, efficient, odourless, vermin-free approach to composting. Bucket systems are embedded into the soil of raised beds, providing nutrient directly to the surrounding soil and roots of plants. They act as a 'home-base' for worms, where they are able to feed on and process food waste before moving through the soil outside the container, excreting nutrient-rich humus and liquid and aerating the soil.

5.9 Garden Beds

Raised garden beds are The Group's preferred option. The dimensions of the beds will allow for a comfortable working height and reach access from both sides. The area between beds will be either mulched or constructed using decomposed granite or similar.

5.10 Orchard

The Garden's orchard will demonstrate basic permaculture principles of succession and polyculture by showcasing an assortment of native and exotic fruit trees and nitrogen fixing pioneer species. An exclusion orchard is proposed for the second stage of development using strictly "fauna friendly" netting (i.e. mesh size of less than 5mm).

The Group hopes to work with Council to determine appropriate native trees species for planting throughout the balance of the reserve.

5.11 Native Bees

The Group, in conjunction with local beekeeper Steve Maginnity of The Australian Native Bee Company, have been establishing several hives over the past two years with the intention of incorporating them into The Garden.



Workshop to split native bee hives

Native bees are a vital part of the Australian bush and are important pollinators of Australia's unique flora. They provide excellent pollination benefits, particularly given their ability to "buzz pollinate" which is critical for the production of some fruits and crops such as melons, pumpkins, capsicums, chillies and eggplants.

Importantly, these bees are stingless so pose no physical threat to humans.

5.12 Tool Shed

The Group intends to construct a tool shed which will be secured by way of combination lock. The code will be changed regularly and made known to all members.

Members and volunteers will be encouraged to bring their own tools to limit the number kept on-site.

5.13 Other Structures

The Group has identified toilet facilities and shade structures as being important, however not necessary during the initial stages of the garden's development. During this time, we will make use of portaloos and gazebos as required for events etc.

We note Council's intention to construct these amenities following the extension of Hutley Drive which would provide a long-term solution to this issue.

6.0 FUNDING

The financial model for a community garden differs from a traditional business model as, once initial costs are covered, community gardens can continue to develop as funds become available. When funds are not available, development progresses at a slower rate but does not result in complete “failure” as is often the case for businesses. This is particularly relevant given the staged approach proposed by Council which is also the preference of The Group.

The Group intends to be as self-supporting as possible, generating revenue from:

- Membership fees,
- Sale of goods,
- Special events,
- Donations, and
- Grants.

“In kind” donations of volunteer time and donated goods and services will also be leveraged.

6.1 Membership Fees

Our membership fees have been kept intentionally low at \$25 per year to encourage participation. Fees will be reviewed annually to determine whether they need to be increased to better reflect our costs.

6.2 Sale of Goods

The potential exists for The Group to earn income directly through the sale of goods.

Related to The Garden <i>Products produced through gardening activities</i>	Unrelated to The Garden <i>Traditional fundraising initiatives</i>
<ul style="list-style-type: none"> ■ Compost worms/worm juice ■ Seeds ■ Seedlings ■ Produce ■ Preserves ■ Honey 	<ul style="list-style-type: none"> ■ Recipe books ■ Entertainment Guides ■ Cake stalls ■ Lemonade stands ■ Sausage sizzles ■ Raffles

6.3 Special Events

Community gardens hold events for a number of reasons:

- To celebrate successes,
- To engage the broader community,
- To promote the garden, and
- To offer activities of value to the community (e.g. educational workshops).

Special events at The Garden can offer a good opportunity for fundraising through a variety of methods, including:

- Charging attendance fees,
- Collecting donations,
- Selling products during the event, and
- Signing up new members.

Ideas for events include:

- Garden busy bees,
- Workshops,
- Food swaps, and
- Harvest feasts.

6.4 Donations

Donations will form an important income stream for The Group and **importantly will be tax deductible due to The Group's Deductible Gift Recipient status**. We propose to collect donations in the following ways:

On-Site

We will set up a collection point for donations by people simply visiting/touring The Garden or those who attend special events.

At Other Locations

We will approach local businesses and supporters to see if they are willing to have a collection tin at their reception desk or point of sale.

Online Donations

Our Community offers a free online donation facility for Australian not-for-profit groups through www.givenow.com.au. Registering for this service would mean The Garden could take credit card donations 24 hours a day, seven days a week. Our Community does not take a commission or fees for this service. We will also include a link to the donations site on the home page of our website and promote it in our e-newsletter.

Saying Thank You

In return for donations, The Group plans to provide donors with one or more of the following (according to the level of contribution):

- Advertising signage opportunities (STCA),
- Acknowledgement on our website and in our e-newsletters,
- Invitations to our events, and
- Produce/seeds from The Garden.

6.5 Grants

Attracting grant funding for The Garden can be a useful way of covering costs, particularly those associated with:

- The initial construction of The Garden,
- The expansion and development of The Garden over time, and
- Running one-off projects and initiatives that expand on the range of activities on offer at The Garden or engage new community groups.

Many avenues are available to secure grants for community gardens, however **it is anticipated that our partnership and ability to auspice with MullumSEED will be particularly fruitful.** They have offered to assist with grant writing and keep us up-to-date with grant opportunities, as has MP Tamara Smith who approached us some time ago.

6.6 Reuse & In-Kind Support

Community gardeners are traditionally very skilful at turning waste into resources, as using recycled materials makes both financial and environmental sense.

We intend to investigate the following:

- Mulch from local sugar cane growers
- Woodchips from council and local arborists
- Animal manure (for composting) from local farms and the Ballina Jockey Club
- Food waste (for composting) from local restaurants, green grocers and residents
- Lawn clippings (for composting) from council, local mowers and landscapers
- Propagation material from other community gardens (to be reciprocated once The Garden is established)
- Out-of-date or root bound plant stock from local nurseries
- Recycled building materials from the Ballina Waste Management Facility and local demolition businesses.

7.0 PARTNERSHIPS & COMMUNITY ENGAGEMENT

The Group intends to enter into a range of partnerships to help meet our funding and other needs and to provide products and services back to the community. Opportunities include:

MullumSEED	Refer Section 2.3.
Other community gardens	Such as Ballina Community Gardens (through our relationship with Simon Scott) and Mullumbimby Community Gardens/Shara Community Gardens (through our partnership with MullumSEED).
Community service programs	Such as Meals on Wheels and Work for the Dole (where possible/compatible).
Markets/festivals	Such as Lennox Community Markets and Love Lennox Festival to promote The Garden and as an avenue to provide information to the community.
Educational institutions	Such as Lennox Head Public School and Lennox Head Pre-School to meet our educational objectives.
Local businesses	Who share similar principles of sustainability (e.g. encourage hospitality industries to dispose of coffee grounds and other food waste for compost).
The Indigenous Australian community	To leverage off ancient wisdom and promote a stronger understanding of sustainable practices and respect for the environment.

APPENDIX A: LETTERS OF SUPPORT



Ballina Council
40 Cherry St
Ballina 2478

13 April 2018

Dear Ballina Councillors & Staff

On behalf of Lennox Head Residents Association (LHRA), thank you for approving Lennox Community Gardens being located in Ocean Breeze Reserve.

With all the environmental, therapeutic, educational, inclusive and creative benefits that come with community gardening, I anticipate these gardens will become an invaluable community hub for many Lennox Head residents (green & brown thumbs alike).

Therefore, LHRA fully supports the approval of the Lennox Community Gardens' application stage of the process.

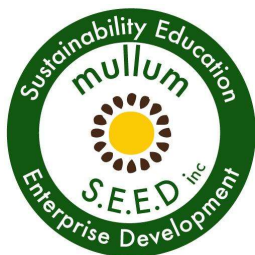
Yours sincerely

A handwritten signature in black ink, appearing to read "M.A. Wilcox".

Monica Wilcox

President, Lennox Head Residents' Association
for Lennox Head Residents' Association.





Mullum S.E.E.D. Inc. | Grow to Share, Share to Grow

Mullumbimby Sustainability Education & Enterprise Development

We are a not-for-profit volunteer based charity which aims to build a respectful, supportive and resilient community with interactive activities based around sustainability and environmental awareness.

Our projects include the Mullumbimby Community Gardens and Shara Community Gardens (Ocean Shores).

MullumSEED Inc is a registered Environmental Charity through which we support a wide range of community initiatives and we will welcome the opportunity to partner with the Lennox Community Gardens in order to strengthen and support this initiative.

Community Gardens offer a wide range of benefits to communities through education and connecting people to local food, organic gardening and sustainability. They also offer important biodiversity refuges for local wildlife.

Community gardens offer an important role in facilitating neighbourhood development, community resilience, cultural exchange and intergenerational connections.

We are confident that there is ample community support for a garden in Lennox Head and that through MullumSEED Inc and the broader Northern Rivers Community Gardens Network we will be able to offer the necessary support services to ensure the Lennox Community Gardens is a success.

We wish them all the very best

Kind Regards

Joel Orchard
President / Secretary
on behalf of
MullumSEED Inc

9/4/2018



Ballina Community
Gardens Inc.

POSTAL

PO Box 858
Ballina NSW 2478

PHONE

Simon Scott
0400 148 692

EMAIL

ballinacommunitygardens@gmail.com

WEB

www.ballinacommunitygardens.com

23 April 2018

James Gatland
Lennox Head Community Garden
LENNOX HEAD NSW
Emailed to lennoxcommunitygardens@gmail.com

RE: Support for Lennox Head Community Garden

Dear James,

The Committee and members of the Ballina Community Garden are pleased to support your group's proposal for the establishment of a community garden on Ocean Breeze Reserve in Lennox Head.

We wish you all the best in your endeavours and will be happy to assist in whatever way we are able to support your project.

Yours faithfully.

Megan Meyers
for Ballina Community Gardens Inc.

Simon Scott

To whom it may concern,

The Australian City Farms and Community Gardens Network (ACFCGN) represents city farms and community gardens from around Australia.

We are a community-based organisation linking people interested in city farming and community gardening across Australia.

The aims of the network include; facilitating the formation and management of community gardens and similar social enterprise by making available information and, where possible, advice.

Within the limits of its capacity, the network also offers:

- advocacy on behalf of community gardeners
- provides information on the website that is adequate and accurate
- provides presentations and advice to local government, other institutions and communities interested in establishing community gardens
- documents the development of community gardening in Australia
- provides a list of contacts through which the public may contact community gardens.

ACFCGN recognises the clear benefits that Community Gardens offer to their communities,

Community gardens are places where people come together to grow fresh food, to learn, relax and make new friends.

The benefits of community gardening include:

- easy access to fresh, nutritious food
- a sense of achievement that comes through growing some of your own food needs
- making friends with people in the neighbourhood
- learning the skills of gardening, shared decision making and cooperation, all of which are necessary to successful community gardens
- healthy outdoor exercise
- participating in a constructive and productive recreational activity
- improving the local environment.

The Australian City Farms and Community Gardens Network would like to offer its formal support for the Lennox Community Gardens

Kind Regards

Joel Orchard

ACFCGN

Secretary



10/4/2018

APPENDIX B: WELCOME PACK



New Member Welcome Pack

Welcome to our community garden, we hope you enjoy your experience here. We strive to make the gardens a happy and peaceful place to visit and garden. If you have any questions at all, please approach one of our committee members.

Monthly committee meetings are held on the second Wednesday of each month at 6:30pm at Club Lennox. These meetings tend to run for approximately two hours. All members are welcome to attend.

Key Contacts

Email Address	lennoxcommunitygardens@gmail.com
Facebook Page	https://www.facebook.com/lennoxcommunitygardens/
Website	https://lennoxcommunitygardens.weebly.com/

Position	Name	Phone No.
President	Jimi Gatland	0410 174 050
Vice President & Public Officer	Fiona Kable	0410 274 106
Treasurer	Carmen Watson	0401 029 727
Secretary	Ricky Ballard	0491 087 768
Ordinary Committee Member	Grant Jenkins	0431 530 865
Ordinary Committee Member	Yolanda Bowron-Walker	0430 783 595
Ordinary Committee Member	Nicola Foster	0413 607 412

Community Garden Guidelines

You are welcome to bring along visitors to tour our garden, however anyone working in the garden needs to become a member for insurance purposes.

LENNOX
COMMUNITY GARDENS

☎ +61 410 174 050

💻 lennoxcommunitygardens@gmail.com

🌐 lennoxcommunitygardens.weebly.com



When you become a member, you will be provided with the combination to access the shed which is for members' use only.

All members are expected to treat each other with respect and tolerance. Everyone is welcome. If you have any concerns regarding the behaviour of other members or visitors, please make your concerns known to one of committee members.

Important reminders:

- Tools are kept in the shed. Please ensure all tools you have used are cleaned and put away before you leave. Tools and garden supplies are not to be removed from the garden.
- If unfamiliar with a particular piece of equipment, please ask someone how to use it correctly.
- Only certified organic fertilisers and pest controls are to be used.
- A first aid kit is kept in the tool shed. If an injury occurs, please fill in an 'incident report' (copies are kept in the first aid kit) after having first applied first aid. Please give a copy of the incident report to one of the committee members.
- Harvesting from the garden is invited on the basis of an 'honesty system' of labour exchange, where members are expected to contribute in some way, such as planting, weeding or maintenance. Excess produce is donated to the local 'meal centre'.
- If you are the last to leave the garden, please ensure the taps are turned off.

Things you can do to assist with the running of the garden:

- Join the roster of regular gardening duties: watering, weeding and planting.
- General maintenance: building and path upkeep, painting, cleaning, sharpening and maintaining our tools.
- Join the Fundraising Team, help with grant writing.
- Help coordinate events.
- Order seeds and maintain the seed inventory.
- Become a first aid officer, keep regular checks of our first aid kit, audit and replenish items as needed.
- Share your writing and/or digital skills including social media, newsletters and website maintenance.
- If you have 'trade skills' you may be able to assist with our 'wish list' of projects.

APPENDIX C: SOIL TEST RESULTS

RESULTS OF SOIL ANALYSIS

4 soil samples supplied by Ballina Shire Council on 17th June, 2016 - Lab Job No. F1126
 Soil samples supplied were composited by EAL into 1 composite samples for analysis
 Analysis requested by James Brideson. **Your Job: Lennox Community Garden - Oceanbreeze**
 (PO Box 450 BALLINA NSW 2478).

ANALYTE	METHOD	Composite Sample 1 C1 (S1-S4)	RESIDENTIAL A Guideline Limit		COMMERCIAL/ INDUSTRIAL D Guideline Limit		Background Range
			Composite - Column A	Individual - Column A	Composite - Column D	Individual - Column D	
	Job No.	F1126/1	See note 1a	See note 1a	See note 1d	See note 1d	See note 2
TEXTURE (SAND, CLAY, SILT)	** inhouse	Silt
MOISTURE %	** C	14
SILVER (mg/Kg DW)	a	<1	na	na	na	na	na
ARSENIC (mg/Kg DW)	a	2	25	100	750	3,000	0.2-30
LEAD (mg/Kg DW)	a	26	75	300	375	1,500	<2-200
CADMIUM (mg/Kg DW)	a	<0.5	5	20	225	900	0.04-2.0
CHROMIUM (mg/Kg DW)	a	48	(<25)	(<100)	(<900)	(<3,600)	0.5-110
COPPER (mg/Kg DW)	a	22	1,500	6,000	60,000	240,000	1-190
MANGANESE (mg/Kg DW)	a	636	950	3,800	15,000	60,000	4 - 12,600
NICKEL (mg/Kg DW)	a	29	100	400	1,500	6,000	2-400
SELENIUM (mg/Kg DW)	a	1	50	200	2,500	10,000	na
ZINC (mg/Kg DW)	a	88	1,850	7,400	100,000	400,000	2-180
MERCURY (mg/Kg DW)	a	0.05	10	40	183	730	0.001-0.1
IRON (% DW)	a	6.46	na	na	na	na	na
ALUMINIUM (% DW)	a	3.05	na	na	na	na	na
BERYLLIUM (mg/Kg DW)	a	1	15	60	125	500	na
BORON (mg/Kg DW)	a	1	1,125	4,500	75,000	300,000	na
COBALT (mg/Kg DW)	a	24	25	100	1,000	4,000	na
PESTICIDE ANALYSIS SCREEN							
DDT+DDE+DDD (mg/Kg)	c	<0.1	60	240	900	3,600	<0.1
Aldrin + Dieldrin (mg/kg)	c	<0.1	2	6	11	45	<0.1
Chlordane (mg/kg)	c	<0.1	13	50	133	530	<0.1
Endosulfan (mg/kg)	c	<0.1	68	270	500	2,000	<0.1
Endrin (mg/kg)	c	<0.1	3	10	25	100	<0.1
Heptachlor (mg/kg)	c	<0.1	2	6	13	50	<0.1
HCB (mg/kg)	c	<0.1	3	10	20	80	<0.1
Methoxychlor (mg/kg)	c	<0.1	75	300	625	2,500	<0.1
Other Organochlorine Pesticides (mg/Kg)	c	<0.1	<0.1
Chlorpyrifos (mg/kg)	c	<0.1	40	160	500	2,000	<0.1
Other Organophosphate Pesticides (mg/Kg)	c	<0.1	<0.1

METHODS REFERENCE

- a. ¹⁵Nitric/HCl digest - APHA 3125 ICPMs
 b. ¹⁵Nitric/HCl digest - APHA 3120 ICPOES
 c. Analysis sub-contracted - Envirolab report no. 148713

** denotes these test procedure or calculation are as yet not NATA accredited but quality control data is available

NOTES

- 1a. HIL A - Residential with garden/accessible soil (home grown produce <10% fruit and vegetable intake (no poultry), also includes childcare centres, preschools and primary schools.
 1b. HIL B - Residential with minimal opportunities for soil access; includes dwellings with fully and permanently paved yard space such as high-rise buildings and apartments.
 1c. HIL C - Public open space such as parks, playgrounds, playing fields (e.g. ovals), secondary schools and footpaths. This does not include undeveloped public open space.
 1d. HIL D - Commercial/industrial, includes premises such as shops, offices, factories and industrial sites.
 (REFERENCE: Health Investigation Guidelines from NEPM (National Environmental Protection, Assessment of Site Contamination, Measure), 2013; Schedule B1).
 2. Environmental Soil Quality Guidelines, Page 40, ANZECC, 1992.

Additional NOTES

DW = Dry Weight. na = no guidelines available

Organochlorine pesticide (OC's) screen:

(HCB, alpha-BHC, gamma-BHC, Heptachlor, delta-BHC, Aldrin, Heptachlor Epoxide, gamma-Chlordane, alpha-chlordane, Endosulfan 1, pp-DDE, Dieldrin, Endrin, pp-DDD, Endosulfan 2, pp-DDT, Endrin Aldehyde, Endosulfan Sulphate, Methoxychlor)

Organophosphorus pesticide (OP's) screen:

(Azinphos-methyl (Guthion), Bromophos-ethyl, Chlorpyrifos, Chlorpyrifos-methyl, Diazinon, Dichlorvos, Dimethoate, Ethion, Fenitrothion, Malathion, Parathion, Ronnel)

PCB's = Polychlorinated Biphenyls

(Arochlor 1016, 1232, 1242, 1248, 1254, 1260)



RESULTS OF SAMPLE ANALYSIS (Page 1 of 1)

4 soil samples supplied by Ballina Shire Council on 17th June, 2016 - Lab Job No. F1126

Soil samples supplied were composited by EAL into 1 composite samples for analysis

Analysis requested by James Brideson. **Your Job: Lennox Community Garden - Oceanbreeze**

(PO Box 450 BALLINA NSW 2478).

Sample Identification	EAL Job No.	SAMPLE DESCRIPTION ¹	ASBESTOS IDENTIFICATION ¹
C1 (S1-S4)	F1126/1	<i>The sample consists of a fragment of a mixture of soil, stones, plant matter, fragments of plaster, corroded metal and bitumen like material.</i>	No asbestos detected

Notes:

1. Subcontracted - Polarized Light Microscope and dispersion staining method



WORLD RECOGNISED
ACCREDITATION

Accreditation No. 14960.
Accredited for compliance
with ISO/IEC 17025.

Environmental Analysis Laboratory, Southern Cross University,
Tel. 02 6620 3678, website: scu.edu.au/eal

checked:
Graham Lancaster
Laboratory Manager